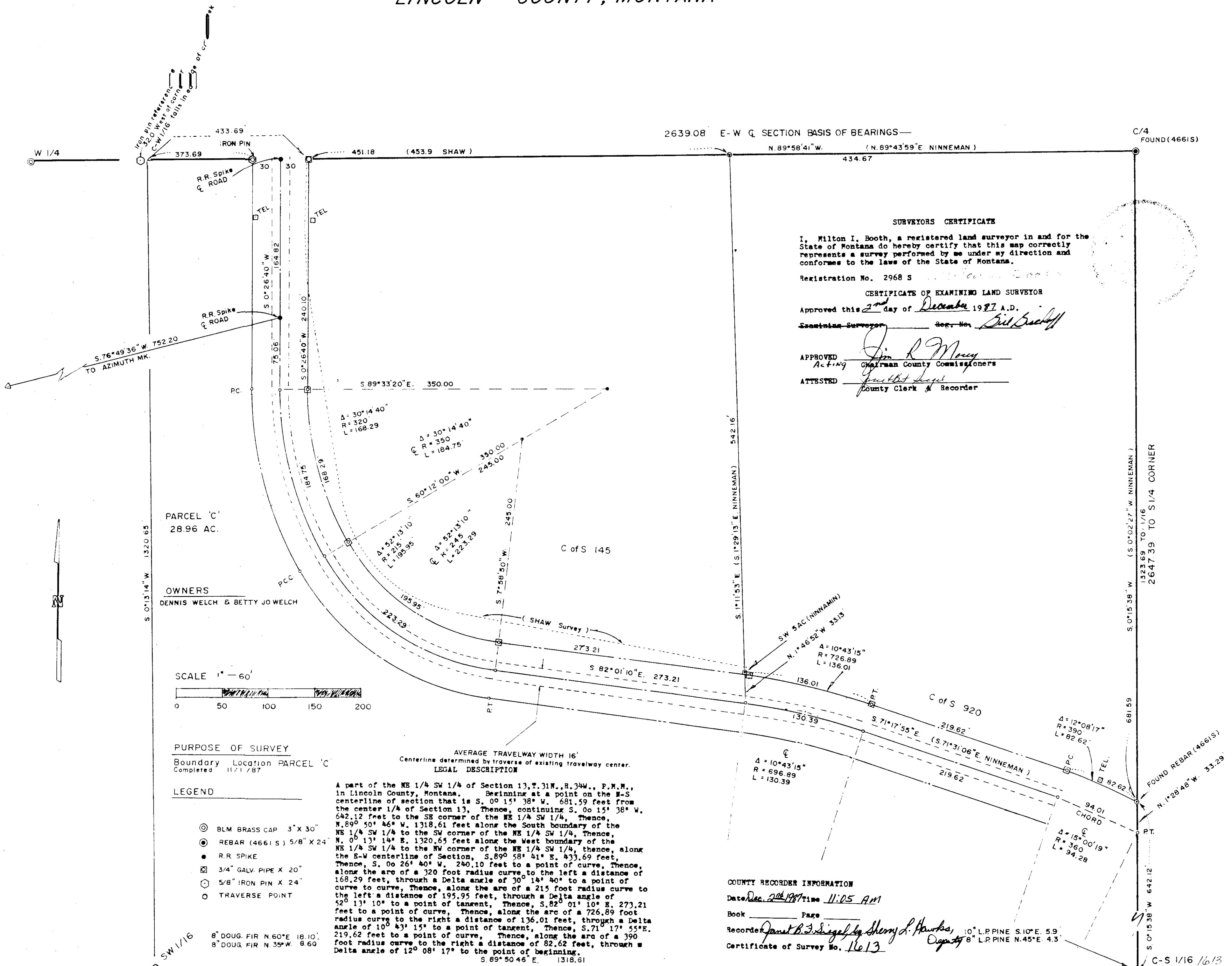


NE 1/4 SW 1/4 OF SECTION 13, T.31N., R.34W., P.M.M. LINCOLN COUNTY, MONTANA



SURVEYORS CERTIFICATE

I, Milton I. Booth, a registered land surveyor in and for the State of Montana do hereby certify that this map correctly represents a survey performed by me under my direction and conforms to the laws of the State of Montana.

Registration No. 2968 S

CERTIFICATE OF EXAMINING LAND SURVEYOR

Approved this 2nd day of December 1987 A.D.

Examining Surveyor: Sid Beckoff Reg. No. 1000

APPROVED Jim R. Marcy
Acting Chairman County Commissioners

ATTESTED Franklin Lopez
County Clerk & Recorder

PURPOSE OF SURVEY
Boundary Location PARCEL 'C'
Completed 11/1/87

- LEGEND**
- ⊙ BLM BRASS CAP 3" X 30"
 - ⊙ REBAR (4661 S) 5/8" X 24"
 - R.R. SPIKE
 - ⊠ 3/4" GALV. PIPE X 20"
 - ⊙ 5/8" IRON PIN X 24"
 - TRAVERSE POINT

AVERAGE TRAVELWAY WIDTH 16'
Centerline determined by traverse of existing travelway center.
LEGAL DESCRIPTION

A part of the NE 1/4 SW 1/4 of Section 13, T.31N., R.34W., P.M.M., in Lincoln County, Montana. Beginning at a point on the N-S centerline of section that is S. 0° 15' 38" W. 681.59 feet from the center 1/4 of Section 13, Thence, continuing S. 0° 15' 38" W. 642.12 feet to the SE corner of the NE 1/4 SW 1/4, Thence, N. 89° 50' 46" W. 1318.61 feet along the South boundary of the NE 1/4 SW 1/4 to the SW corner of the NE 1/4 SW 1/4, Thence, N. 0° 13' 14" E. 1320.65 feet along the West boundary of the NE 1/4 SW 1/4 to the NW corner of the NE 1/4 SW 1/4, thence, along the E-W centerline of Section, S. 89° 58' 41" E. 433.69 feet, Thence, S. 0° 26' 40" W. 240.10 feet to a point of curve, Thence, along the arc of a 320 foot radius curve to the left a distance of 168.29 feet, through a Delta angle of 30° 14' 40" to a point of curve to curve, Thence, along the arc of a 215 foot radius curve to the left a distance of 195.95 feet, through a Delta angle of 52° 13' 10" to a point of tangent, Thence, S. 82° 01' 10" E. 273.21 feet to a point of curve, Thence, along the arc of a 726.89 foot radius curve to the right a distance of 136.01 feet, through a Delta angle of 10° 43' 15" to a point of tangent, Thence, S. 71° 17' 55" E. 219.62 feet to a point of curve, Thence, along the arc of a 390 foot radius curve to the right a distance of 82.62 feet, through a Delta angle of 12° 08' 17" to the point of beginning.
S. 89° 50' 46" E. 1318.61

COUNTY RECORDER INFORMATION

Date Dec. 2nd 1987 Time 11:05 AM
Book _____ Page _____
Recorder Janet B. Siegel by Sherry L. Hawks
Certificate of Survey No. 1613

8" DOUG. FIR N. 60° E. 18.10'
8" DOUG. FIR N. 35° W. 8.60'

C-S 1/16 1613