

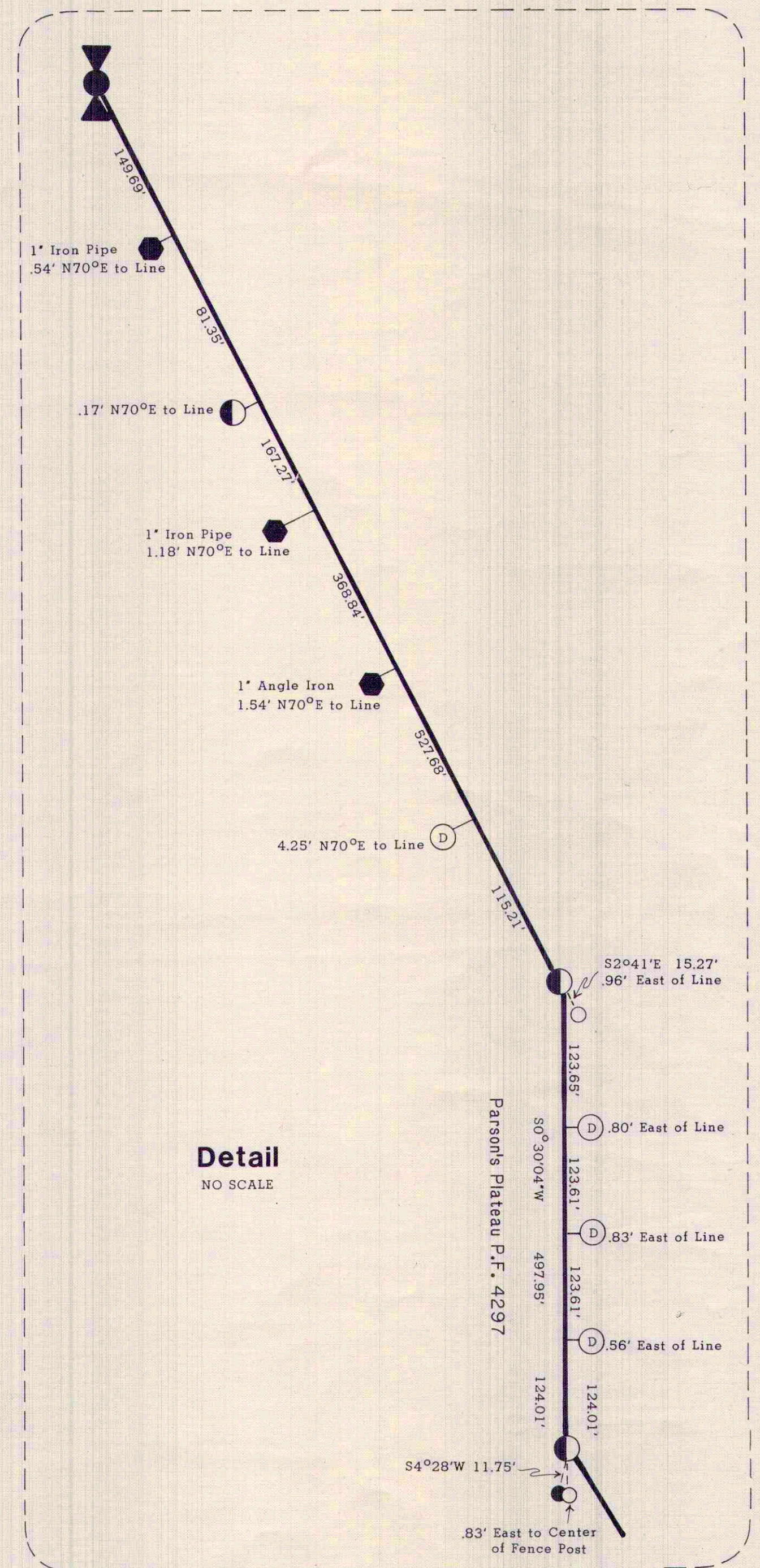
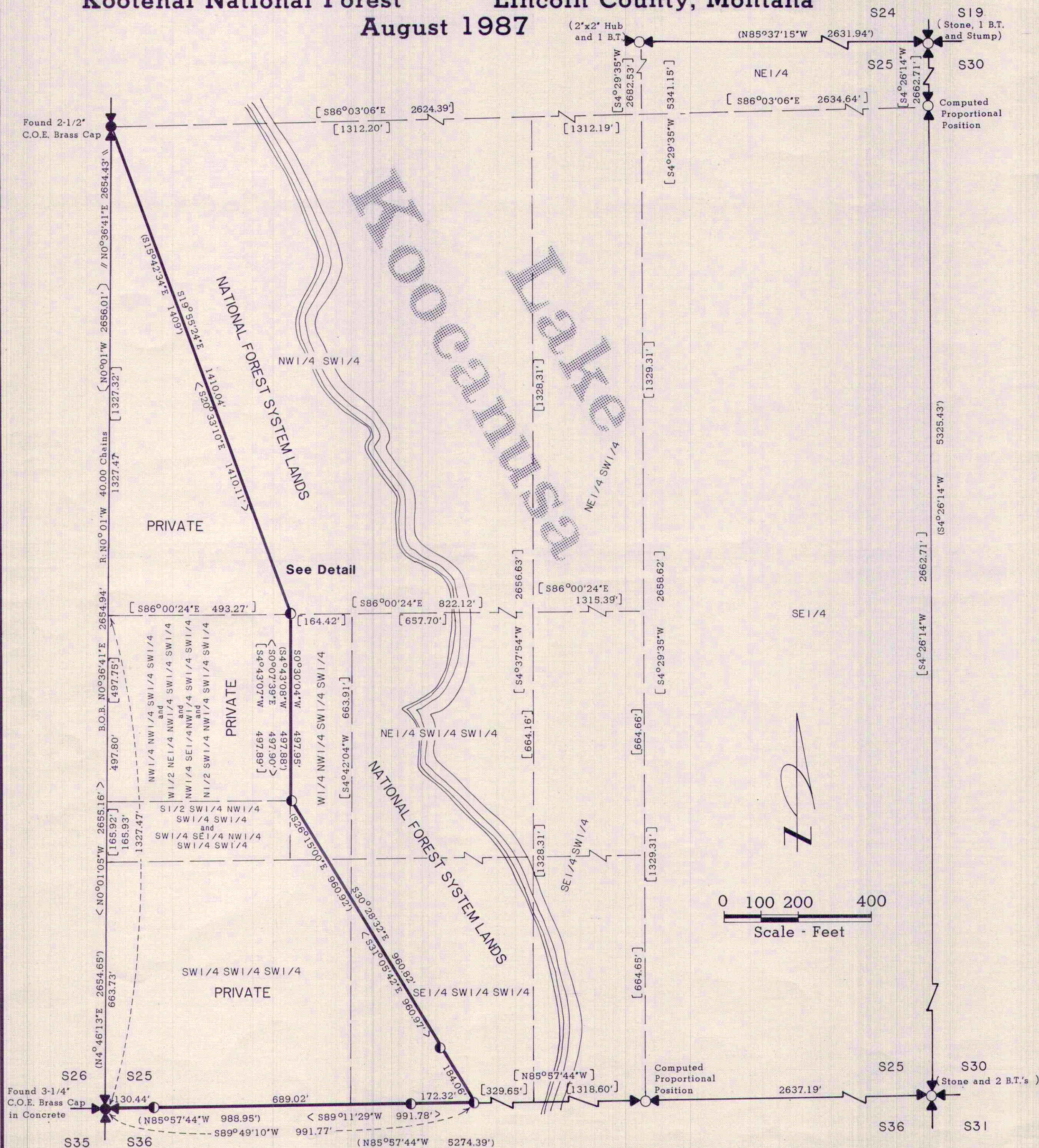
CERTIFICATE OF SURVEY

RETRACEMENT OF SW 1/4 SECTION 25, T.37N., R.28W., P.M.M.

Kootenai National Forest

Lincoln County, Montana

August 1987



1/4	S.	T.	R.
	25	37N	28W

Page 1 of 2

Certificate of Survey No. 1602

CERTIFICATE OF SURVEY
RETRACEMENT OF SW 1/4 SECTION 25, T.37N., R.28W., P.M.M.
Kootenai National Forest Lincoln County, Montana
August 1987

Purpose of Survey:

THE PURPOSE OF THIS SURVEY IS TO LOCATE UPON THE GROUND THE TITLE LINES OF RECORD BETWEEN NATIONAL FOREST SYSTEM LANDS AND PRIVATE LANDS, AND NO DIVISION OF LAND IS HEREBY CREATED.

History:

Section Exteriors

ORIGINAL G.L.O. SURVEY WAS PERFORMED BY FRANK L. SIZER IN SEPTEMBER OF 1894, AND APPROVED MAY 3, 1895. THE U.S. ARMY CORPS OF ENGINEERS REMONUMENTED THE SECTION AND ONE-QUARTER CORNERS AS SHOWN HEREON IN 1968 (THEIR RECORDS INDICATE THAT NO ORIGINAL EVIDENCE WAS FOUND FOR THE SECTION CORNER AND A FENCE POST WAS ACCEPTED FOR THE POSITION). CARL MCMILLAN (4659S) PERPETUATED BOTH CORNERS (AS MONUMENTED BY THE C.O.E.) IN 1983 SEE CERTIFIED CORNER RECORDATION FORMS ON FILE AT THE LINCOLN COUNTY CLERK AND RECORDER'S OFFICE.

Section Interiors

THE IRREGULAR BOUNDARY SHOWN HEREON WAS FIRST DESCRIBED BY THE DOCUMENT FILED IN BOOK 4, PAGES 292 AND 293, RECORDS OF LINCOLN COUNTY. KENNETH HASKELL. MONUMENTED THE EASTERN BOUNDARY OF THE THIS PARCEL IN JUNE 1969, AS SHOWN ON PLAT NO. 1588, RECORDS OF LINCOLN COUNTY. THE U.S. ARMY CORPS OF ENGINEERS PURCHASED TRACT NO. 3510 (THE REMAINDER OF THE WEST HALF OF THE SOUTHWEST ONE-QUARTER OF SECTION 25) FROM DONALD A. AND LORRAINE M. BAILLIE IN FEBRUARY 1969 (BOOK 4, PAGES 673 AND 674, RECORDS OF LINCOLN COUNTY). THE U.S. ARMY CORPS OF ENGINEERS MONUMENTED THE WESTERN BOUNDARY OF TRACT NO. 3510 IN 1973 (RESULTING IN ALTERNATE CORNER POSITIONS THAN THE HASKELL SURVEY). KENNETH DAVIS (4975S) SUBDIVIDED A PORTION OF THE PARCEL SHOWN ON PLAT NO. 1588 IN APRIL OF 1985, HE ACCEPTED NONE OF THE U.S. CORPS OF ENGINEERS CORNERS, INSTEAD UTILIZED FENCE POSTS AND A FOUND HASKELL MONUMENT FOR CORNER POSITIONS (THUS CREATING STILL ANOTHER POSITION FOR CERTAIN CORNERS ALONG THE IRREGULAR BOUNDARY).

Surveyor's Notes:

DUE TO THE EXISTING CONFLICTING MONUMENTS ON THE NATIONAL FOREST BOUNDARY, AN INDEPTH RESEARCH OF THE PREVIOUS SURVEYS AND RECORDS WAS PERFORMED. CONCLUSIONS FOLLOW: THE FIRST DEED (BOOK 4, PAGES 292 AND 293) ESTABLISHING THIS IRREGULAR BOUNDARY IS INCONSISTENT WITH MANY ERRORS, INCLUDING NOT ENDING AT THE BEGINNING POINT. THE DESCRIBED PARCEL IS BASED UPON A PARCEL 495 FEET BY 495 FEET (15 ACRES) THAT LIES IN THE SOUTHWEST ONE-QUARTER OF SECTION 25 AND IS 825 FEET NORTHERLY OF THE SOUTHWEST CORNER OF SECTION 25. THE SECOND DEED (BOOK 4, PAGES 673 AND 674, PREPARED BY THE DEPARTMENT OF THE ARMY) DEPICTS THE REMAINDER OF THE WEST HALF OF THE SOUTHWEST QUARTER OF SECTION 25. IT SHOWS ALL DISTANCES TO BE 495, 825, 990, 1320 AND 2640 FEET (RETRACEMENT BETWEEN THE SECTION AND ONE-QUARTER CORNER RESULTS IN 2654.94 FEET). THE SURVEY PERFORMED BY KENNETH HASKELL (PLAT NO. 1588) ESTABLISHED CORNERS AT THE 495, 825, 990 AND 1320 FOOT DISTANCES AND PUSHED ALL OF THE EXCESS (APPROXIMATELY 15 FEET) INTO THE NORTHERN PORTION OF THE PARCEL. EXAMINATION OF THE MCMILLAN SURVEY (CERTIFICATE OF SURVEY NO. 1240) AND THE RELATIONSHIP BETWEEN THE CORNER OF SECTIONS 25, 26, 35 AND 36 AND THE C.O.E. MONUMENT TO THE EAST OF IT CLEARLY SHOWS AN APPROXIMATELY 2.8 FOOT EAST-WEST MISTAKE IN THE C.O.E. POSITION FOR THE SECTION CORNER. THE CORNER POSITIONS ESTABLISHED BY THE U.S. ARMY CORPS OF ENGINEERS ARE CLEARLY BASED UPON A SECTION SUBDIVISION AND CORNERS ARE POSITIONED AT PROPORTIONAL DISTANCES (EQUALLY DISTRIBUTING THE EXCESS AND ADHERING TO THE INTENT OF PREVIOUS DEEDS), I THEREFORE ACCEPT THE POSITIONS OF THE U.S. ARMY CORPS OF ENGINEERS MONUMENTS. FOR FURTHER INFORMATION ON CORNERS ACCEPTED BY THIS SURVEY, SEE CERTIFIED CORNER RECORDATIONS FILED WITH THE LINCOLN COUNTY CLERK AND RECORDER.

Survey Method:

CORNER POSITIONS AS SHOWN ON THIS SURVEY ARE BASED UPON CLOSED TRAVERSES PERFORMED WITH A TOTAL STATION INSTRUMENT IN APRIL AND MAY OF 1987.

Basis of Bearing:

THE LINE BETWEEN THE CORNER OF SECTIONS 25, 26, 35 AND 36 AND THE ONE-QUARTER CORNER BETWEEN SECTIONS 25 AND 26 AS SHOWN ON CERTIFICATE OF SURVEY NO. 1240, WHICH WAS BASED UPON A ROTATION OF THE C.O.E. PROJECT DATUM OF -4°13'10".

Legend:



ONE-QUARTER CORNER LAYING IN LAKE KOOCANUSA, UTILIZED POSITION AS SHOWN ON LAKE KOOCANUSA CADASTRAL MAP BY ARMY CORPS OF ENGINEERS.



SECTION CORNER LAYING IN LAKE KOOCANUSA, UTILIZED POSITION AS SHOWN ON LAKE KOOCANUSA CADASTRAL MAP BY ARMY CORPS OF ENGINEERS.



ONE-QUARTER CORNER AS NOTED.



SECTION CORNER AS NOTED.



FOUND MONUMENTS AS NOTED - ORIGIN UNKNOWN.



FOUND 3/4 INCH CORPS OF ENGINEERS BRASS DISC SET IN CONCRETE.



FOUND 1-1/2 INCH DIAMETER IRON PIPE - PRESUMED TO HAVE BEEN SET BY HASKELL.



FENCE POST CORNER AS SHOWN ON P.F. PLAT NO. 4297, RECORDS OF LINCOLN COUNTY.



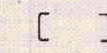
FOUND 1-5/8 INCH REBAR WITH YELLOW PLASTIC CAP BY 4975, AS SHOWN ON P.F. PLAT NO. 4297, RECORDS OF LINCOLN COUNTY.



RECORD FROM LAKE KOOCANUSA CADASTRAL MAP BY ARMY CORPS OF ENGINEERS DISTRICT FILE NO. E 53-1-154 DATED 1972. BASIS OF BEARINGS IS LAMBERT GRID, MONTANA NORTH ZONE.



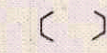
RECORD FROM P.F. NO. 4297, BY 4975S, RECORDS OF LINCOLN COUNTY.



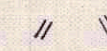
COMPUTED BEARINGS AND DISTANCES, BASED UPON CORPS OF ENGINEERS RECORD COORDINATES FOR CONTROLLING CORNERS OF SECTION 25. FOUND POSITION FOR CORNER OF SECTIONS 25, 26, 35 AND 36 IS NOT UTILIZED. BASIS OF BEARINGS IS LAMBERT GRID, MONTANA NORTH ZONE.



RECORD FROM 1894 G.L.O. SURVEY BY F. SIZER.



RECORD FROM PLAT NOS. 1588 AND 1749, BY 270ES, RECORDS OF LINCOLN COUNTY.



RECORD FROM C.O.S. NO. 1240, BY 4659S, RECORDS OF LINCOLN COUNTY.

SECTION LINE

NATIONAL FOREST SYSTEM LANDS BOUNDARY, MARKED AND POSTED 1987

SECTION SUBDIVISIONAL LINE

Forest Supervisor's Certificate:

I HEREBY CERTIFY THAT THE SURVEY SHOWN HEREON, WAS CONDUCTED FOR THE PURPOSE OF NATIONAL FOREST MANAGEMENT AND IN ACCORDANCE WITH THE POLICIES SET FORTH IN FSM 7152.03.

Frank Votopla
for FOREST SUPERVISOR

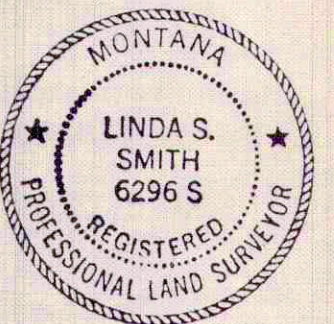
10/1/87
DATE

Certificate:

I HEREBY CERTIFY THAT I AM A REGISTERED LAND SURVEYOR IN THE STATE OF MONTANA, THAT THE SURVEY SHOWN ON THIS CERTIFICATE HAS BEEN PREPARED IN ACCORDANCE WITH THE MONTANA CODE ANNOTATED (SECTIONS 76-3-101 THROUGH 76-3-614) AND THE LINCOLN COUNTY REGULATIONS ADOPTED PURSUANT THERETO.

Linda S. Smith

LINDA S. SMITH
MONTANA REGISTRATION NO. 6296S



Certificate of Examining Land Surveyor:

APPROVED THIS 21st DAY OF October 1987, A.D.

Bill G. Buckoff
EXAMINING LAND SURVEYOR

APPROVED *Bill E. Williams*
CHAIRMAN, LINCOLN COUNTY COMMISSIONERS

Certificate of Clerk and Recorder:

STATE OF MONTANA, COUNTY OF LINCOLN, FILED THIS 21st DAY OF Oct. 1987 A.D. AT 11:25 O'CLOCK A. M.

Janet B. F. Siegel
COUNTY CLERK RECORDER

BY *Sherry L. Hawks*
DEPUTY

1/4	S.	T.	R.
	25	37N	28W