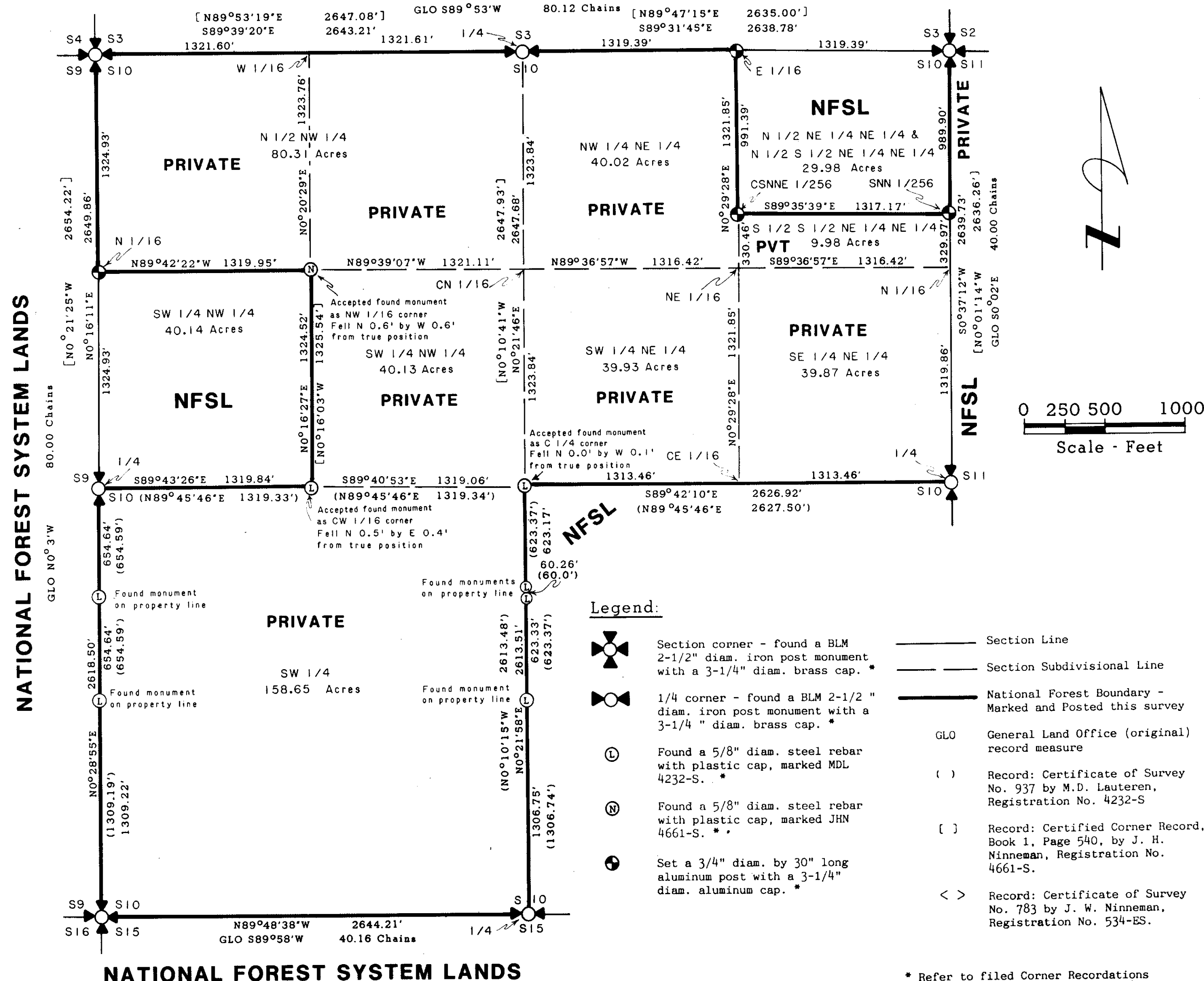


# CERTIFICATE OF SURVEY

## RETRACEMENT, DEPENDENT RESURVEY, AND SECTION SUBDIVISION

SECTION 10, T.31N., R.31W., P.M.M.  
KOOTENAI NATIONAL FOREST LINCOLN COUNTY, MONTANA  
JANUARY 1987

NATIONAL FOREST SYSTEM LANDS  
See Detail on Sheet 2



### Forest Supervisor's Certificate:

This survey was made at my request for National Forest management purposes.

*James F. Rathbun*  
for James F. Rathbun, Forest Supervisor

### Purpose of Survey:

The purpose of this survey is to locate upon the ground, the title lines of record between private and National Forest lands. No division of land is hereby created.

### Basis of Bearing:

Computed from record State plane coordinate values for stations "Sheldon" (U.S.C. & G.S. established) and "Flat", "Gravel", "Pit", "Ranger", and "Sand" (B.P.A. established), then rotated to True Meridian -4°30'49" about the 1/4 corner of Sections 8 and 17.

### Method of Survey:

Conventional Theodolite-Distance Meter traverse procedures were used to accomplish this survey. From this data, corner moves and posting offsets were computed.

### Legal Description:

National Forest Lands described hereon: N 1/2 NE 1/4 NE 1/4, N 1/2 S 1/2 NE 1/4 NE 1/4, SE 1/4, and SW 1/4 NW 1/4.

Private Lands described hereon: S 1/2 S 1/2 NE 1/4 NE 1/4, SE 1/4 NE 1/4, SW 1/4 NE 1/4, NW 1/4 NE 1/4, SW 1/4, N 1/2 NW 1/4, and SE 1/4 NW 1/4.

### History of Surveys:

Original Survey - This section was created in the survey by A.L. Jaqueth conducted from June to July, 1901.

Remonumentation of Original Corners - All original corners were remonumented by the BLM in 1962 and 1963.

Certificates of Surveys recorded: 783, 937, 951, 1134, 1295, 1349, and 1350.

### Surveyor's Notes:

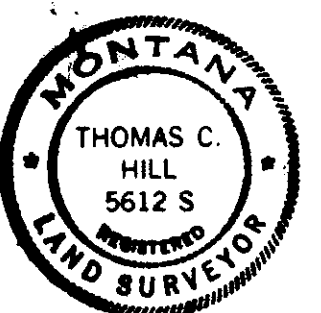
While this survey was accomplished utilizing the MONTANA STATE PLANE COORDINATE SYSTEM (north zone), values shown on this certificate have been rotated to True Meridian and grid distances have been scaled up to a 2500 foot elevation.

MONTANA STATE PLANE COORDINATE SYSTEM (north zone) computed value for the 1/4 of Sections 10 and 15 = Y:534211, X:589178. Based on tie to station "Sheldon" (published by U.S.C. and G.S. in 1959) and stations "Flat", "Gravel", "Pit", "Ranger", and "Sand" (BPA 1981 published values).

### Certificate:

I hereby certify that I am a registered Land Surveyor in the State of Montana, that the survey shown on this certificate has been prepared in accordance with the Montana code annotated (sections 76-3-101 through 76-3-614) and the Lincoln County regulations adopted pursuant thereto.

*Thomas C. Hill*  
Thomas C. Hill, Montana Registration No. 5612S



### Certificate of Examining Land Surveyor:

Approved this 14<sup>th</sup> day of April, 1987, A.D.

*Bill D. Lusk*  
Examining Land Surveyor  
Approved *James C. Hill*  
Chairman, Lincoln County Commissioners

### Certificate of Clerk and Recorder:

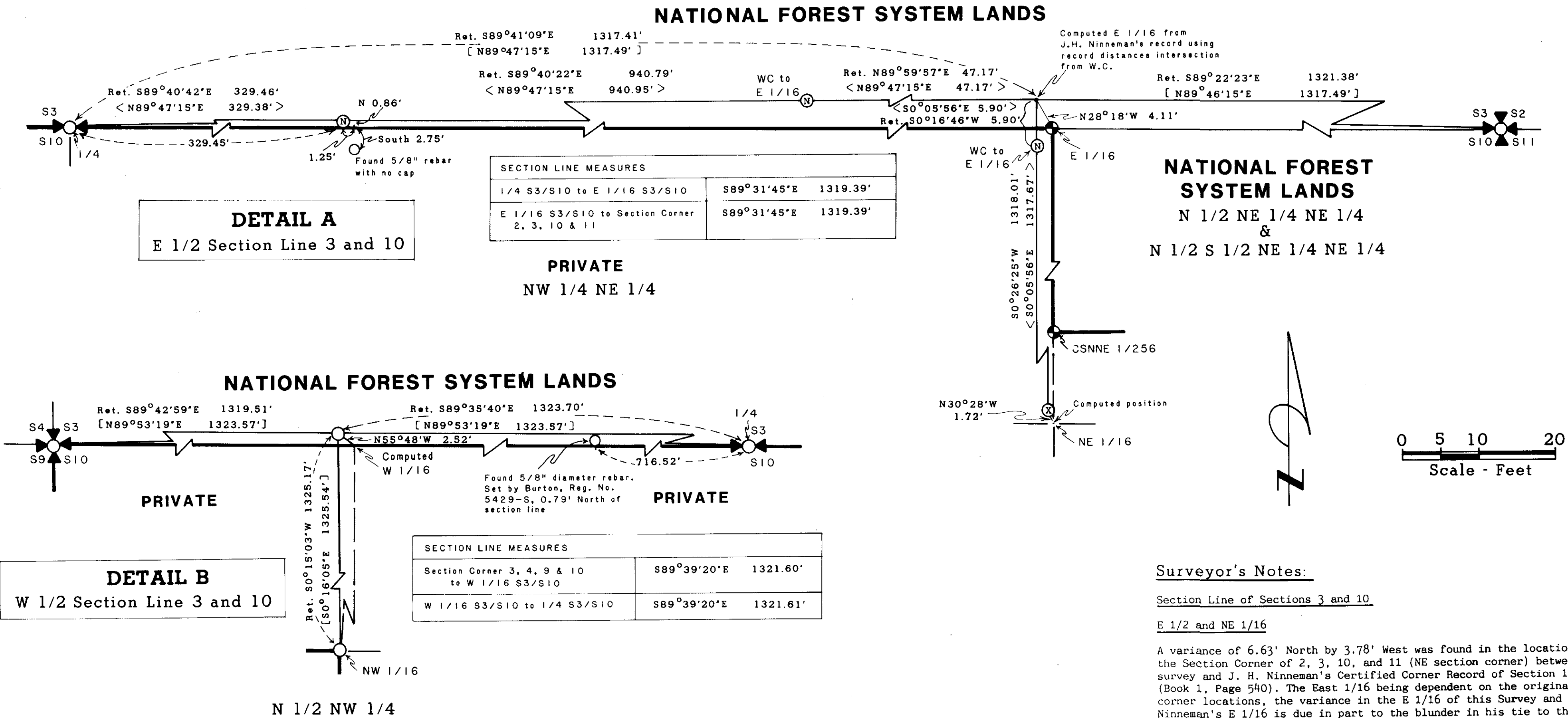
State of Montana, County of Lincoln, filed this 15<sup>th</sup> day of April, 1987 A.D. at 4:00 o'clock P.m.  
*Janet B. J. Siegel* by *Sherry L. Hawks*  
County Clerk Recorder Deputy

\* Refer to filed Corner Recordations

Certificate of Survey No. 1555

**CERTIFICATE OF SURVEY**  
**SECTION 10, T.31N., R.31W., P.M.M.**  
**KOOTENAI NATIONAL FOREST LINCOLN COUNTY, MONTANA**  
**JANUARY 1987**

**DETAIL SHEET**



**Surveyor's Notes:**

Section Line of Sections 3 and 10

E 1/2 and NE 1/16

A variance of 6.63' North by 3.78' West was found in the location of the Section Corner of 2, 3, 10, and 11 (NE section corner) between this survey and J. H. Ninneman's Certified Corner Record of Section 10 (Book 1, Page 540). The East 1/16 being dependent on the original GLO corner locations, the variance in the E 1/16 of this Survey and J. H. Ninneman's E 1/16 is due in part to the blunder in his tie to the NE section corner. The same dependency exists at the NE 1/16.

With the discrepancies as shown above resulting in error distances over one foot in positional tolerance and the existence of said blunder, I reject the existing monuments as the E 1/16 and NE 1/16. The differences in location are shown graphically in Detail A.

West 1/2 and NW 1/16

A variance of 4.36' North by 3.87' West was found in the location of the Section Corner 3, 4, 9 and 10 (NW section corner) between this survey and J. H. Ninneman's Certified Corner Record of Section 10 (Book 1, Page 540). The West 1/16 being dependent on the original GLO corner locations, the variance in the W 1/16 of this Survey and J. H. Ninneman's W 1/16 is due in part to the blunder in his tie to the NW section corner.

With the discrepancy as shown above resulting in an error distance over one foot positional tolerance and the existence of a blunder, I reject the existing monument as W 1/16. The differences in location are shown graphically in Detail B. The NW 1/16 though dependent on the tie to the NW section corner was found to be within the one foot positional tolerance criteria. I therefore accepted this monument as the NW 1/16.

**Legend:**



Section corner - found a BLM 2-1/2" diam. iron post monument with a 3-1/4" diam. brass cap. \*



1/4 corner - found a BLM 2-1/2" diam. iron post monument with a 3-1/4" diam. brass cap. \*



Found a 5/8" diam. steel rebar with plastic cap, marked MDL 4232-S. \*



Found a 5/8" diam. steel rebar with plastic cap, marked JHN 4661-S.



Found and did not accept for the indicated corner a 5/8" diam. steel rebar with plastic cap, marked JHN 4661-S. (Tolerance = ± 1 foot from true position.)



Set a 3/4" diam. by 30" long aluminum post with a 3-1/4" diam. aluminum cap. \*

Retraced Survey Lines

Section Subdivisional Line

National Forest Boundary - Marked and Posted this survey

GLO General Land Office (original) record measure

( ) Record: Certificate of Survey No. 937 by M.D. Lauteren, Registration No. 4232-S

[ ] Record: Certified Corner Record, Book 1, Page 540, by J. H. Ninneman, Registration No. 4661-S.

< > Record: Certificate of Survey No. 783 by J. W. Ninneman, Registration No. 534-ES.

\* Refer to filed Corner Recordations