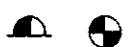

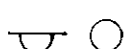
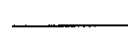
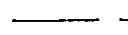

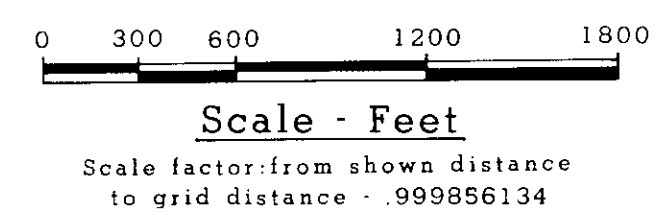
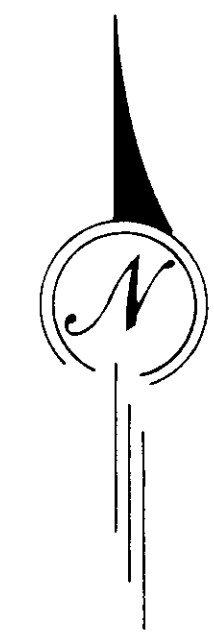
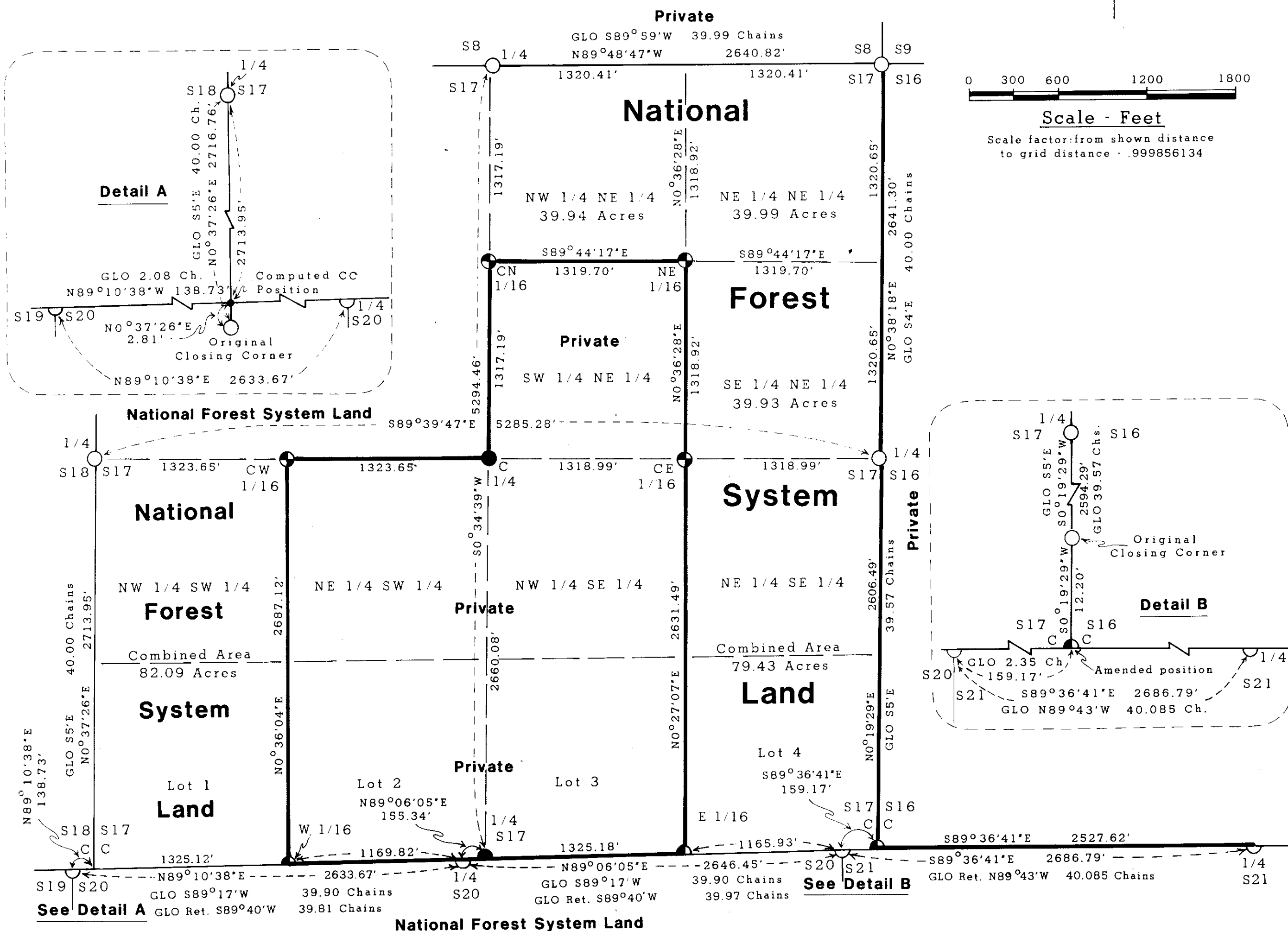


CERTIFICATE OF SURVEY
DEPENDENT RESURVEY AND SECTION SUBDIVISION
OF SECTION 17, T.31N., R.31W., P.M.M.
LINCOLN COUNTY, MONTANA OCTOBER 1986
KOOTENAI NATIONAL FOREST

Legend:

-  SET A 3/4" DIAMETER X 30" LONG ALUMINUM POST WITH A 3/4" DIAMETER ALUMINUM CAP.
-  SET A 2 1/2" DIAMETER X 30" LONG ALUMINUM POST WITH A 3/4" DIAMETER ALUMINUM CAP.
-  FOUND A BLM 2 1/2" DIAMETER IRON POST MONUMENT WITH A 3/4" DIAMETER BRASS CAP.
-  SECTION LINE
-  SECTION SUBDIVISIONAL LINE
-  BRUSHED, BLAZED AND POSTED LINE



Forest Supervisor's Certificate:
THIS SURVEY WAS MADE AT MY REQUEST FOR NATIONAL FOREST MANAGEMENT PURPOSES.
James F. Rathbun
JAMES F. RATHBUN FOREST SUPERVISOR

Purpose of Survey:
THE PURPOSE OF THIS SURVEY IS TO LOCATE UPON THE GROUND, THE TITLE LINES OF RECORD BETWEEN PRIVATE AND NATIONAL FOREST LANDS. NO DIVISION OF LAND IS HEREBY CREATED.

Basis of Bearing:
COMPUTED FROM RECORD STATE PLANE COORDINATE VALUES FOR STATION "SHELDON" (U.S.C. & G.S. ESTABLISHED) AND STATIONS "FLAT", "GRAVEL", "PIT", "RANGER", AND "SAND" (B.P.A. ESTABLISHED) THEN ROTATED TO TRUE MERIDIAN (-4°32'46") ABOUT THE 1/4 CORNER OF SECTIONS 8 AND 17.

Method of Survey:
CONVENTIONAL THEODOLITE-ELECTRONIC DISTANCE METER TRAVERSE PROCEDURES WERE USED TO ACCOMPLISH THIS SURVEY. FROM THIS DATA, CORNER MOVES AND POSTING OFFSETS WERE COMPUTED.

Legal Description:
NATIONAL FOREST LANDS DESCRIBED HEREON - NE 1/4 NE 1/4, SE 1/4 NE 1/4, NW 1/4 NE 1/4, NE 1/4 SE 1/4, LOT 1, LOT 4, AND NW 1/4 SW 1/4.
PRIVATE LANDS DESCRIBED HEREON - SW 1/4 NE 1/4, NW 1/4 SE 1/4, SE 1/4, NE 1/4 SW 1/4, LOT 1 AND LOT 3.

History of Survey:
ORIGINAL SURVEYS - THE SOUTH SECTION LINE WAS ESTABLISHED BY D.P. MUMBUE IN AUGUST 1893 IN HIS SURVEY OF THE SOUTH HALF OF THIS TOWNSHIP. A.L. JAQUETH RETRACED THE SOUTH SECTION LINE AND SUBDIVIDED THE NORTH HALF OF THIS TOWNSHIP, CREATING THIS SECTION, FROM JUNE TO JULY 1901.

REMONUMENTATION OF ORIGINAL CORNERS - PERFORMED BY THE B.L.M. ON ALL ORIGINAL CORNERS IN THE YEARS 1962 AND 1963.
NO PRIVATE SURVEYS ARE RECORDED IN THIS SECTION.

Surveyor's Note:
WHILE THIS SURVEY WAS ACCOMPLISHED UTILIZING THE MONTANA STATE PLANE COORDINATE SYSTEM NORTH ZONE, VALUES SHOWN ON THIS CERTIFICATE HAVE BEEN ROTATED TO TRUE MERIDIAN AND GRID DISTANCES HAVE BEEN SCALED UP TO A 2500 FOOT ELEVATION.

MONTANA STATE PLANE COORDINATE SYSTEM (NORTH ZONE) COMPUTED VALUE FOR 1/4 OF SECTIONS 8 AND 17 = Y:590054, X:523671. BASED ON TIE TO "SHELDON" MARK (U.S.C. AND G.S. 1959 PUBLISHED VALUES) AND "FLAT", "GRAVEL", "PIT", "RANGER", AND "SAND" MARKS (B.P.A. 1981 PUBLISHED VALUES.)

Certificate:
I HEREBY CERTIFY THAT I AM A REGISTERED LAND SURVEYOR IN THE STATE OF MONTANA, THAT THE SURVEY SHOWN ON THIS CERTIFICATE HAS BEEN PREPARED IN ACCORDANCE WITH THE MONTANA CODE ANNOTATED (SECTIONS 76-3-101 THROUGH 76-3-614) AND THE LINCOLN COUNTY REGULATIONS ADOPTED PURSUANT THERETO.
Thomas C. Hill
THOMAS C. HILL MONTANA REGISTRATION NO. 5612S



Certificate of Examining Land Surveyor:
APPROVED THIS 11th DAY OF February 1987 A.D.
Bill Swickoff
EXAMINING LAND SURVEYOR
APPROVED *Joe B. Williams*
CHAIRMAN, LINCOLN COUNTY COMMISSIONERS

Certificate of Clerk and Recorder:
STATE OF MONTANA, COUNTY OF LINCOLN, FILED THIS 11th DAY OF Feb. 1987 A.D. AT 11:30 O'CLOCK A. M.
Janet B. J. Sigel BY *Sherry L. Hawks*
COUNTY CLERK RECORDER DEPUTY