

CERTIFICATE OF SURVEY

DEPENDENT RESURVEY OF PORTIONS OF HES 733

SECTIONS 14 AND 15, T.31N., R.32W., P.M.M.

KOOTENAI NATIONAL FOREST

LINCOLN COUNTY, MONTANA OCTOBER 1986

Forest Supervisor's Certificate:

THIS SURVEY WAS MADE AT MY REQUEST FOR NATIONAL FOREST MANAGEMENT PURPOSES

Thomas C Hill
 FOR JAMES F. RATHBUN, FOREST SUPERVISOR

Purpose of Survey:

THE PURPOSE OF THIS DEPENDENT RESURVEY IS TO IDENTIFY TITLE LINES BETWEEN NATIONAL FOREST SYSTEM LANDS AND PORTIONS OF HES 733. NO NEW DIVISIONS OF LAND ARE HEREBY CREATED.

Basis of Bearing:

SOLAR OBSERVATION

Method of Survey:

THE SURVEY AS SHOWN HEREON WAS CONDUCTED JULY 1986, UTILIZING CONVENTIONAL TRAVERSE PROCEDURES, TIEING EXISTING CORNERS WITH A LIETZ TOTAL STATION; FROM THIS DATA, CORNER LOCATION AND PROPERTY LINE OFFSETS WERE COMPUTED.

Legal Description:

PRIVATE LANDS DESCRIBED HEREON - HES 733

NATIONAL FOREST SYSTEM LANDS DESCRIBED HEREON - THAT PORTION OF SECTIONS 14 AND 15, LYING SOUTH OF THE KOOTENAI RIVER, EXCEPTING HES 733.

History of Survey:

1917 - GLO - M.H. COFFIN & R.F. MACLEAN - SUBDIVISION OF PORTIONS OF T.31N., R.32W. WHICH INCLUDED SECTION 14.
 1919 - USFS - HAROLD TOWNSEND - SURVEY OF HES 733.

Certificate:

I HEREBY CERTIFY THAT I AM A REGISTERED LAND SURVEYOR IN THE STATE OF MONTANA, THAT THE SURVEY SHOWN ON THIS CERTIFICATE HAS BEEN PREPARED IN ACCORDANCE WITH THE MONTANA CODE ANNOTATED (SECTIONS 76-3-101 THROUGH 76-3-614) AND THE LINCOLN COUNTY REGULATIONS ADOPTED PURSUANT THERETO.



Alvah F. Hughes 7322-S
 ALVAH F. HUGHES
 MONTANA REGISTRATION NO. 7322-S

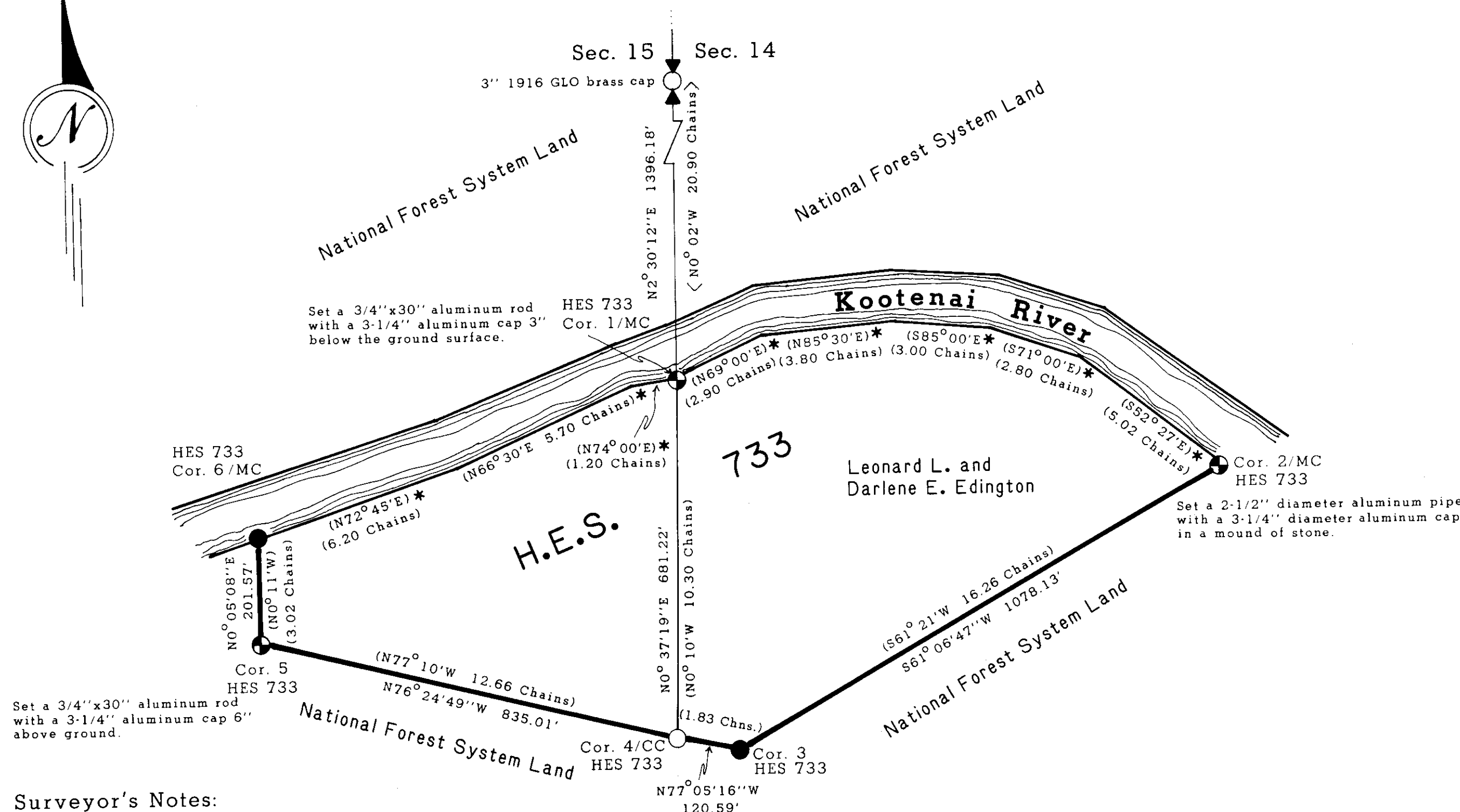
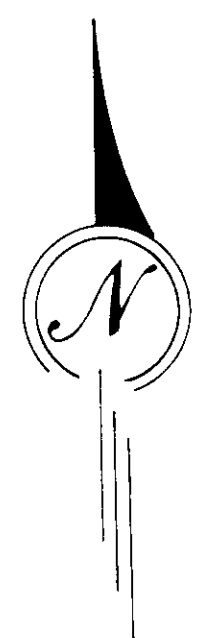
Certificate of Examining Land Surveyor:

APPROVED THIS 19th DAY OF November 1986, A.D.
Sid Seickoff
 EXAMINING LAND SURVEYOR
 APPROVED *B.W. Lindsey*
 CHAIRMAN, LINCOLN COUNTY COMMISSIONERS

Certificate of Clerk and Recorder:

STATE OF MONTANA, COUNTY OF LINCOLN, FILED THIS 19th DAY OF November 1986, A.D. AT 2:30 O'CLOCK P.M.
David B. Theis
 COUNTY CLERK RECORDER BY *Jeanie Annis*
 DEPUTY

Certificate of Survey Number: 524



Surveyor's Notes:

Corners found, perpetuated, and accepted for control:
 Corners 3, 4/CC and 6.

Corners reestablished this survey using the BLM Broken Boundary Boundary method for establishment of lost corners:
 Corner 2/MC - Determined lost due to ditching activities and bank erosion along the Kootenai River, and finding no definitive evidence of the original cottonwood bearing trees.
 Corner 5 - Determined lost as its position fell in the road prism of U.S. Highway 2.

Corners reestablished this survey using collateral evidence:
 Corner 1/MC - An original cedar bearing tree was recovered, however the direction of the scribed face conflicts with the record bearing. I retraced the section line from Corner 4/CC to the 1/4 Sec. Cor., Sections 14 and 15, and found a large bearing deflection. I computed a position for Corner 1/MC using the record meanders. This position falls at record distance and the direction in which the found cedar bearing tree faces. Therefore, I concluded that the record bearing, S51°30'E to be in error, and the corrected bearing to be N51°30'E. I set the monument for Corner 1/MC, at N51°30'E and 35 links, record distance, from the original cedar bearing tree. This position is substantiated by the retracement of the section line from Corner 4/CC to Corner 1/MC, during the original homestead survey.

Corner Recordations for all corners found or set are filed at the Lincoln County Courthouse, Libby, Montana.

Legend:

- FOUND ORIGINAL GLO MONUMENT AS NOTED
- FOUND ORIGINAL STONE MONUMENT
- MONUMENT SET THIS SURVEY AS NOTED
- MONUMENT SET FROM EVIDENCE
 2-1/2" DIAMETER ALUMINUM PIPE WITH A 3-1/4" ALUMINUM CAP
- 1919 RECORD - HES 733
- 1917 RECORD - GLO
- NATIONAL FOREST BOUNDARY MARKED AND POSTED TO STANDARD.
- SECTION LINE
- HES 733 RECORD MEANDER LINE

