

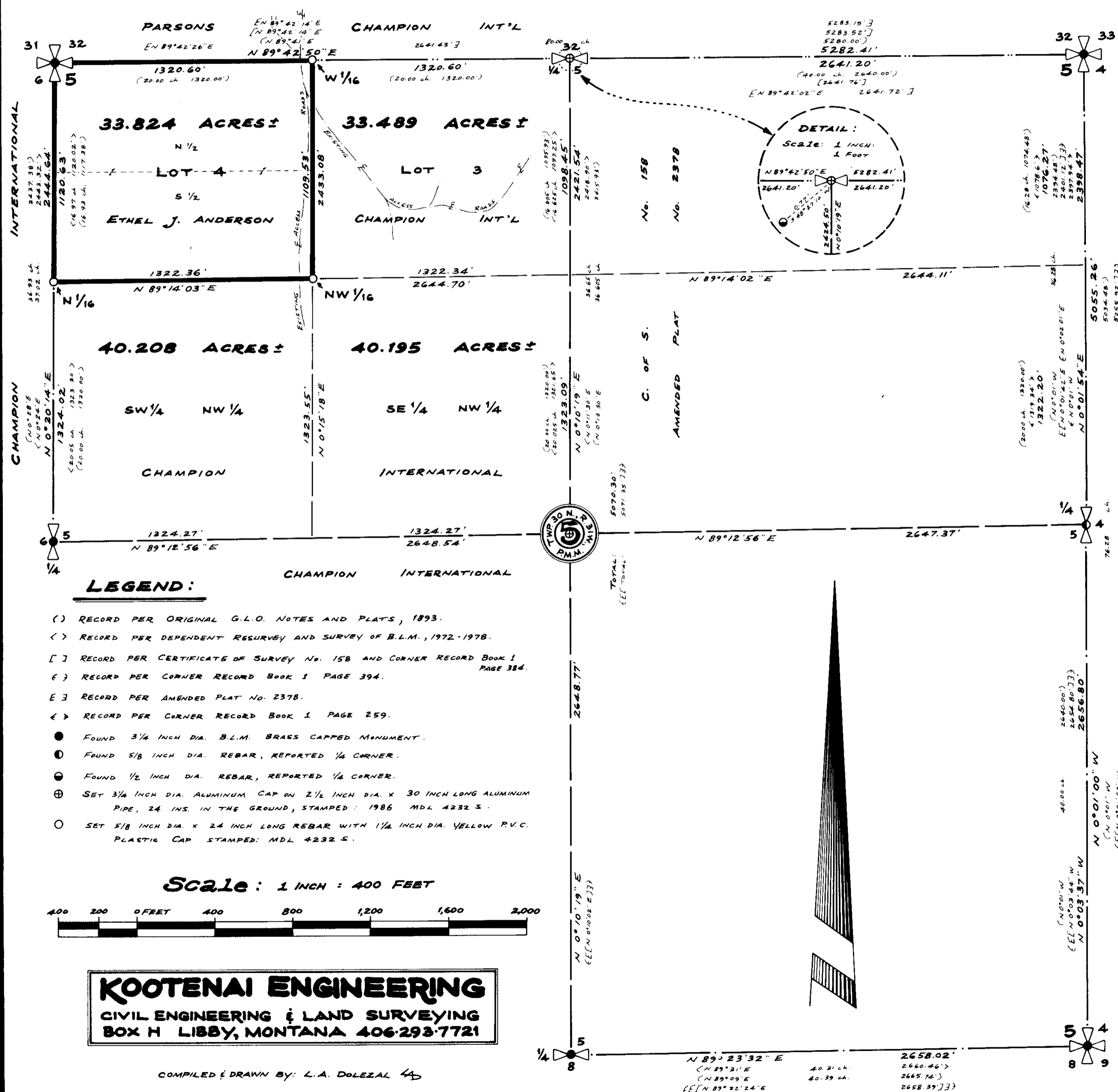
CERTIFICATE OF SURVEY

IN THE NW 1/4 OF SECTION 5
OF TWP. 30 N., R. 31 W., P.M.M.

FOR: CHAMPION INTERNATIONAL

DATE: OCTOBER, 1986.

1/4	SEC.	TWP.	RNG.
X	5	30N31W	



BASIS FOR BEARINGS

Bearings were based upon the bearing of the East line of Section 5 Twp. 30N., R. 31W., P.M.M. reported to bear N 0°01'W by the Original Notes and Plats of the General Land Office (G.L.O.).

PURPOSE OF SURVEY

The purpose of this survey is to locate on the ground corners controlling property boundaries between Champion International and other private owners in the subject Section 5 Twp. 30N., R. 31W., P.M.M. to simplify subsequent location of said property boundaries on the ground. The exterior boundaries are a retracement of existing tracts of record, and no division of land is hereby created; therefore, this survey is exempt from review, being completed pursuant to Section 76-3-404, M.C.A.

NOTES

This survey was completed using a Topcon Guppy "Total Station", with theodolite and EDM in one compact unit, along with a 100-foot steel tape. Computations were completed on a Monroe 1880/F88 "Surveyor" and HP-97 and HP-41CV calculators.

The original survey of the subject Section 5 Twp. 30N., R. 31W., P.M.M. was completed by Daniel P. Mumbroe in 1893 for the General Land Office. The West and South lines of the subject Section 5 were later surveyed by Shirley B. Hjellum and James S. Prichard, Supervisory Cadastral Surveyors for the Bureau of Land Management, in 1972 through 1974 and accepted in 1978.

There are many other private survey records in the subject Section 5. The North, East and East 1/2 of the South lines of the subject Section 5 were surveyed at various dates by Ninneman Engineering. A Corner Record filed by Jack W. Ninneman 534 E.S. per Book 1 Page 259 in January, 1972 states the East 1/4 corner of the subject Section 5 was destroyed by construction and a steel rod was set by him. This monument was used on subsequent surveys and is referred to in Corner Records Book 1 Pages 384 and 394 as well as on Certificate of Survey No. 158 and Amended Plat No. 2378. This found 5/8 inch diameter rebar is accepted as the best evidence of the position of the East 1/4 corner of the subject Section 5.

The North 1/4 corner was set at proportionate distances between the opposing Section corners and is also shown on Corner Records Book 1 Pages 384 and 394, as well as on Certificate of Survey No. 158 and Amended Plat No. 2378. The 1/2 inch diameter rebar found is slightly out of position, and the North 1/4 corner is re-monumented on this survey with a 3/4 inch diameter Aluminum Capped Monument.

APPROVED: This 29th day of October, 1986 A.D.

Sid Backoff
Examining Land Surveyor Registration No. _____

APPROVED: *Pat Lindsey*
Chairman, Lincoln County, Montana Commissioners

CERTIFICATE OF COUNTY CLERK AND RECORDER

STATE OF MONTANA.
COUNTY OF LINCOLN.

Filed on this 29th day of Oct., 1986 A.D. at 11:30 o'clock A.M.

Janet B. J. Siegel by *Sherry L. Hawks*
County Clerk and Recorder Deputy

CERTIFICATE OF SURVEY No. 1518

LEGEND:

- () RECORD PER ORIGINAL G.L.O. NOTES AND PLATS, 1893.
- < > RECORD PER DEPENDENT RESURVEY AND SURVEY OF B.L.M., 1972-1978.
- [] RECORD PER CERTIFICATE OF SURVEY No. 158 AND CORNER RECORD BOOK 1 PAGE 384.
- { } RECORD PER CORNER RECORD BOOK 1 PAGE 394.
- E { } RECORD PER AMENDED PLAT No. 2378.
- < > RECORD PER CORNER RECORD BOOK 1 PAGE 259.
- FOUND 3/4 INCH DIA. B.L.M. BRASS CAPPED MONUMENT.
- ⊙ FOUND 5/8 INCH DIA. REBAR, REPORTED 1/4 CORNER.
- ⊙ FOUND 1/2 INCH DIA. REBAR, REPORTED 1/4 CORNER.
- ⊕ SET 3/4 INCH DIA. ALUMINUM CAP ON 2 1/2 INCH DIA. X 30 INCH LONG ALUMINUM PIPE, 24 INS. IN THE GROUND, STAMPED: 1986 MDL 4232 S.
- SET 5/8 INCH DIA. X 24 INCH LONG REBAR WITH 1 1/2 INCH DIA. YELLOW P.V.C. PLASTIC CAP STAMPED: MDL 4232 S.

Scale: 1 INCH = 400 FEET



KOOTENAI ENGINEERING
CIVIL ENGINEERING & LAND SURVEYING
BOX H LIBBY, MONTANA 406-293-7721

COMPILED & DRAWN BY: L.A. DOLEZAL

K.C.L. No. 885 - CHAMPION INT'L WEST LIBBY - 10/86