

CERTIFICATE OF SURVEY

DEPENDENT RESURVEY AND SECTION SUBDIVISION

OF SECTION 14, T.29N., R.29W., P.M.M.

LINCOLN COUNTY, MONTANA SEPTEMBER 1986

KOOTENAI NATIONAL FOREST

Forest Supervisor's Certificate:

I HEREBY CERTIFY THAT THE SURVEY SHOWN HEREON, WAS CONDUCTED FOR THE PURPOSE OF NATIONAL FOREST MANAGEMENT AND IN ACCORDANCE WITH THE POLICIES SET FORTH IN FSM 7152.03

Kenneth G. Briggman
FOREST SUPERVISOR

10/7/86
DATE

Legend:



FOUND SECTION CORNER, 2-1/2" DIAMETER IRON POST WITH A 3-1/2" DIAMETER BRASS CAP, BLM MONUMENT

FOUND 1/4 CORNER, 2-1/2" DIAMETER IRON POST WITH A 3-1/2" DIAMETER BRASS CAP, BLM MONUMENT

CORNER MONUMENT SET THIS SURVEY - 3/4" DIAMETER ALUMINUM ROD WITH 3-1/4" DIAMETER ALUMINUM CAP MARKED 5612-S.

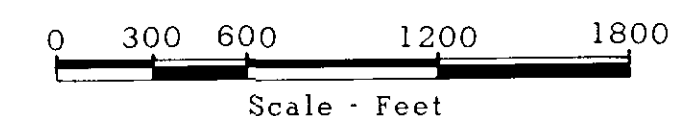
CORNER MONUMENT SET THIS SURVEY - ESTABLISHED A 23" DIAMETER FIR FOR CENTER 1/4 CORNER WITH A REFERENCE MONUMENT SET N87°34'W, 13.23 FEET FROM CORNER. REFERENCE MONUMENT IS A 3/4" DIAMETER ALUMINUM ROD WITH A 3-1/4" DIAMETER ALUMINUM CAP MARKED 5612-S.

SECTION LINE

SECTION SUBDIVISIONAL LINE

BRUSHED, BLAZED AND POSTED LINE

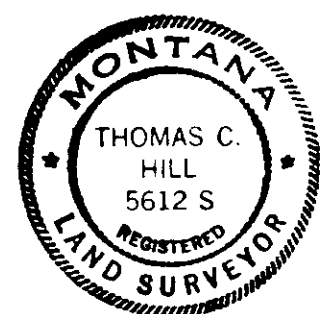
() GENERAL LAND OFFICE RECORD



Certificate:

I HEREBY CERTIFY THAT I AM A REGISTERED LAND SURVEYOR IN THE STATE OF MONTANA, THAT THE SURVEY SHOWN ON THIS CERTIFICATE HAS BEEN PREPARED IN ACCORDANCE WITH THE MONTANA CODE ANNOTATED (SECTIONS 76-3-101 THROUGH 76-6-614) AND THE LINCOLN COUNTY REGULATIONS ADOPTED PURSUANT THERETO.

Thomas C. Hill
THOMAS C. HILL
MONTANA REGISTRATION NO. 5612S



Certificate of Examining Land Surveyor:

APPROVED THIS 15th DAY OF October 1986, A.D.

Bill Bickel
EXAMINING LAND SURVEYOR

REGISTRATION NO.

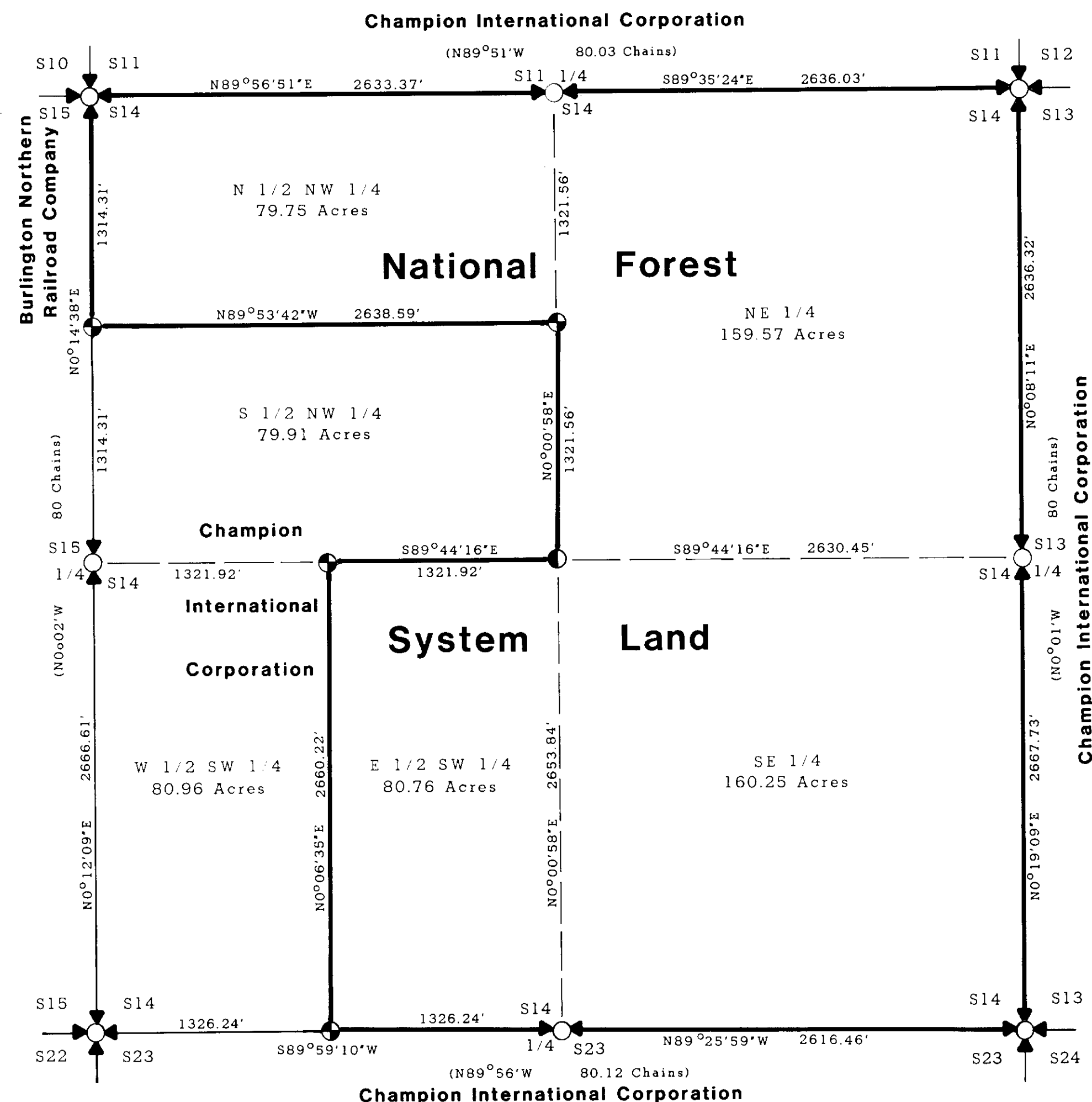
APPROVED *B.W. Lindsey*
CHAIRMAN, LINCOLN COUNTY COMMISSIONERS

Certificate of Clerk and Recorder:

STATE OF MONTANA, COUNTY OF LINCOLN, FILED THIS 15th DAY OF Oct. 1986 A.D. AT 12:00 O'CLOCK P. M.

Janet B. F. Siegel
COUNTY CLERK RECORDER

BY *Shemp L. Hawks*
DEPUTY



Purpose of Survey:

THE PURPOSE OF THIS SURVEY IS TO LOCATE UPON THE GROUND THE TITLE LINES OF RECORD BETWEEN NATIONAL FOREST SYSTEM LANDS AND PRIVATE LANDS, AND NO DIVISION OF LAND IS HEREBY CREATED.

History:

ORIGINAL GLO SURVEY 1898 BY PAUL S. A. BICKEL, REMONUMENTATION BY THE BUREAU OF LAND MANAGEMENT 1964-1966. SUBDIVISIONAL LINES RUN BY ST. REGIS CORPORATION 1968. FIELD NOTES AT CHAMPION INTERNATIONAL OFFICE, LIBBY, MONTANA. FOR FURTHER INFORMATION ON CORNERS SET THIS SURVEY, SEE CERTIFIED CORNER RECORDATION FILED AT LINCOLN COUNTY COURTHOUSE.

Legal Description:

NATIONAL FOREST SYSTEM LANDS DEFINED HEREON - N 1/2 NW 1/4, E 1/2 SW 1/4, NE 1/4, SE 1/4 SECTION 14, T.29N., R.29W., P.M.M.

Survey Method:

THIS SURVEY WAS ACCOMPLISHED WITH A TOTAL STATION TRAVERSE AUGUST 1986 BY RONALD A. PEARSON

Basis of Bearing:

SOLAR OBSERVATION.

Certificate of Survey Number 1512