

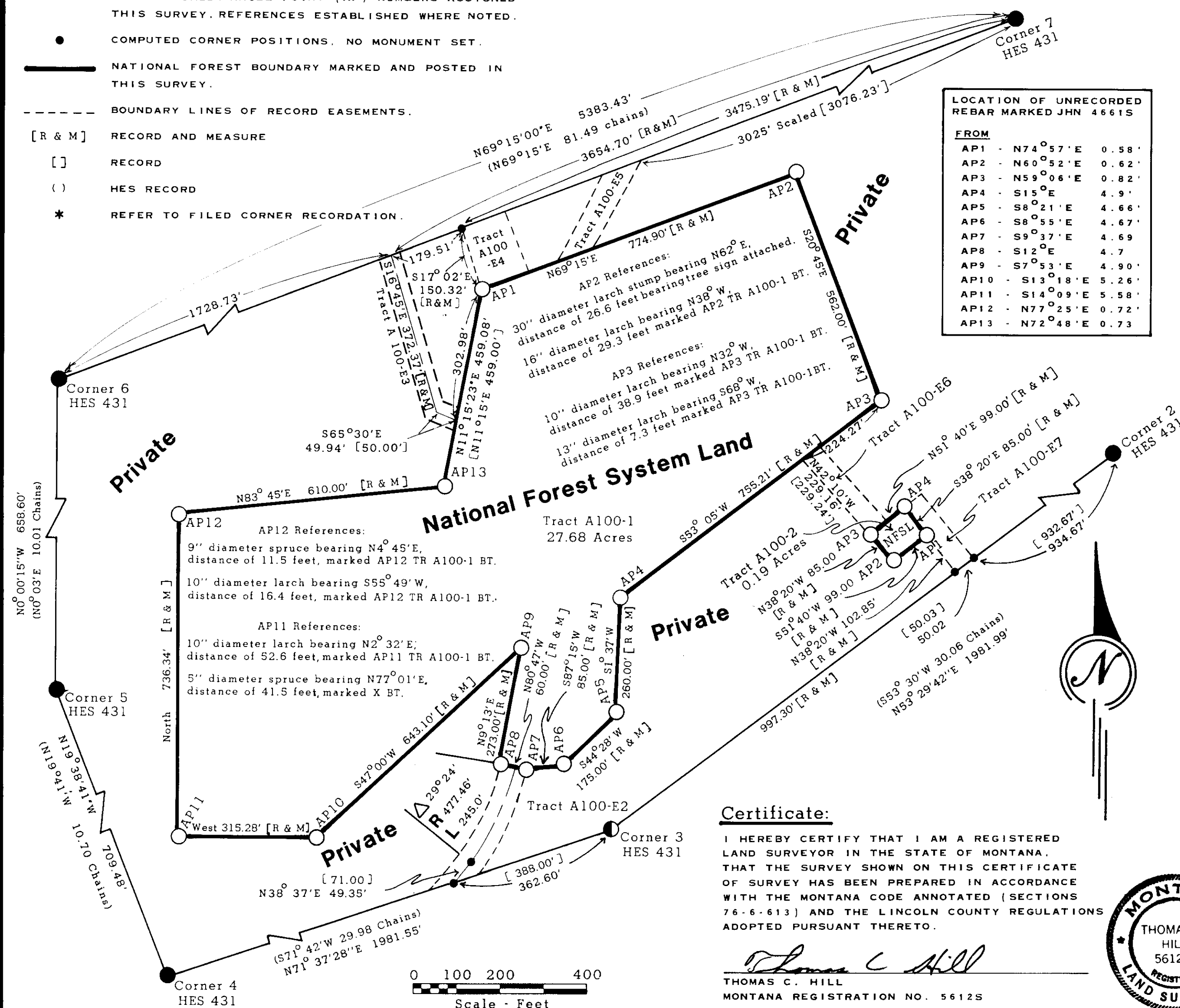
# CERTIFICATE OF SURVEY

## RETRACEMENT OF PORTIONS OF HES 431 AND DEPENDENT RESURVEY OF TRACTS A100-1, A100-2, AND PORTIONS OF TRACTS A100-E2, E4, E6, E7 - ALL LOCATED WITHIN HES 431. HES 431 IS LOCATED IN PROTRACTED SECTIONS 2 AND 3 OF T.35N., R.32W. AND PROTRACTED SECTIONS 34 AND 35 OF T.36N., R.32W., P.M.M. LINCOLN COUNTY, MONTANA

JUNE 1986

### Legend:

- FOUND ORIGINAL STONE.\*
- FOUND AND ACCEPTED AS CORNER. A 1/2 INCH DIAMETER REBAR.  
PER E.R. SIEVERS, 1946-ES, 1964 CORNER RECORDATION.\*
- MONUMENT SET THIS SURVEY - 3/4 INCH DIAMETER  
ALUMINUM ROD WITH 3 1/4 INCH DIAMETER ALUMINUM  
CAP ATTACHED. ANGLE POINT (AP) NUMBERS ASSIGNED  
THIS SURVEY. REFERENCES ESTABLISHED WHERE NOTED.
- COMPUTED CORNER POSITIONS. NO MONUMENT SET.
- NATIONAL FOREST BOUNDARY MARKED AND POSTED IN  
THIS SURVEY.
- BOUNDARY LINES OF RECORD EASEMENTS.
- [R & M] RECORD AND MEASURE
- [ ] RECORD
- ( ) HES RECORD
- \* REFER TO FILED CORNER RECORDATION.



LOCATION OF UNRECORDED REBAR MARKED JHN 4661S		
FROM	TO	BEARING
AP1	N74° 57' E	0.58'
AP2	N60° 52' E	0.62'
AP3	N59° 06' E	0.82'
AP4	S15° 0' E	4.9'
AP5	S8° 21' E	4.66'
AP6	S8° 55' E	4.67'
AP7	S9° 37' E	4.69'
AP8	S12° 0' E	4.7'
AP9	S7° 53' E	4.90'
AP10	S13° 18' E	5.26'
AP11	S14° 09' E	5.58'
AP12	N77° 25' E	0.72'
AP13	N72° 48' E	0.73'

### Forest Supervisor's Certificate:

THIS SURVEY WAS MADE AT MY REQUEST FOR NATIONAL  
FOREST MANAGEMENT PURPOSES.

*William A. Perry*  
for JAMES F. RATHBUN, FOREST SUPERVISOR

### Purpose of Survey:

THE PURPOSE OF THIS SURVEY IS TO LOCATE UPON THE GROUND,  
THE TITLE LINES OF RECORD BETWEEN PRIVATE AND NATIONAL  
FOREST LANDS. NO DIVISION OF LAND IS HEREBY CREATED.

### Legal Description:

NATIONAL FOREST LANDS DESCRIBED HEREON -  
TRACT A100-1 AND TRACT A100-2, ALONG WITH TIES, TO EASEMENT TRACTS  
A100-E2, E4, E5, E6 AND E7.  
PRIVATE LANDS DESCRIBED HEREON -  
PORTIONS OF HES 431 - NO FULL PARCELS DEFINED.

### Method of Survey:

CONVENTIONAL THEODOLITE ELECTRONIC DISTANCE METER TRAVERSE  
PROCEDURES WERE USED TO ACCOMPLISH THIS SURVEY PROJECT. FROM THIS  
DATA CORNER MOVES AND POSTING OFFSETS WERE COMPUTED.

### Basis of Bearing:

RECORD ORIGINAL BEARING FROM HES 431'S SURVEY BETWEEN CORNERS 6 TO 7.

### History of Survey:

HES 431 WAS SURVEYED JULY 7-9, 1915 BY F.E. THIEME AND IS BOUNDED  
BY THE FOLLOWING SURVEYS, HES 274, HES 432, HES 1179 AND OLSEN RANGER  
STATION. ● YAAK AIRBASE SITE WAS ACQUIRED BY COURT JUDGMENT DATED  
JANUARY 31, 1957 AND FILED UNDER BOOK 116 PAGE 255 LINCOLN COUNTY  
RECORDS, WITH PLAT 573 FILED JULY 7, 1959. ● PLATS OF RECORD WITHIN  
THIS HES - 571, 572, 573, 642 AND 2209. ● UNRECORDED MONUMENTS WERE FOUND  
NEAR ALL TRUE CORNER POSITIONS FOR TRACT A100-1, HAVING CAPS MARKED  
JHN 4661-S. (SEE LISTING)

### Surveyor's Notes:

THE PROCEDURES USED FOR LOCATING TRACT A100-1 ARE AS FOLLOWS -  
1) THE COORDINATE VALUES FOR THE FOUR CORNERS OF TRACT A100-E4 WERE  
DETERMINED USING RECORD DISTANCE FROM CORNER 7 FOR ITS NW CORNER AND  
THEN RECORD BEARING AND DISTANCE FOR THE THREE REMAINING CORNERS.  
2) I DETERMINED THROUGH CALCULATIONS THAT THE SW CORNER OF TRACT  
A100-E4 IS EQUAL TO THE CORNER OF TRACT A100-1 (I NOW CALL AP1) FROM  
AP1 I TRAVERSED CLOCKWISE AROUND SAID TRACT CLOSING BACK TO THE POINT  
OF BEGINNING (AP1). NOTE - I FIND THE PLATTED DISTANCE FROM CORNER 3  
TO TRACT A100-E2 IS INCORRECT. REFER TO DIAGRAM. MY POSITION FOR  
TRACT A100-1 ALLOWS FOR THE BEST MATCH WITH ADJOINING TRACTS.

THE PROCEDURES FOR LOCATING TRACT A100-2 ARE AS FOLLOWS - 1) COORDINATE  
VALUES FOR THE FOUR CORNERS OF TRACT A100-E7 WERE DETERMINED STARTING  
WITH RECORD BEARING AND DISTANCE FROM CORNER 3 HES 431. THE SW CORNER  
OF SAID TRACT AND THENCE RECORD BEARING AND DISTANCE TO THE THREE  
REMAINING CORNERS. NOTE - AN ERROR IS APPARENT ON PLAT 573, THE SUM  
OF THE FRACTIONAL DISTANCES MEASURED ALONG THE LINE FROM CORNER 2 TO  
CORNER 3 DOESN'T EQUAL THE TOTAL DISTANCE REPORTED FROM CORNER 2 TO 3  
THE SAID PROCEDURE USED ABOVE BEST FITS AN OLD EXISTING ROAD LYING  
WITHIN SAID TRACT. 2) I THEN ESTABLISHED ON THE GROUND TRACT A100-2  
STARTING AT POINT I NOW CALL AP1 AT RECORD DISTANCE ON THE WESTERN  
LINE OF TRACT A100-E7. THEN TRAVERSED CLOCKWISE AROUND TRACT A100-2  
USING RECORD BEARING AND DISTANCE ESTABLISHING ON THE GROUND THE  
THREE REMAINING CORNERS CLOSING ONTO THE NW CORNER POSITION OF TRACT  
A100-E7.

### Certificate of Examining Land Surveyor:

APPROVED THIS 15th DAY OF October 1986, A.D.

*Bill D. Brachoff*  
EXAMINING LAND SURVEYOR

APPROVED *Bill D. Brachoff*  
CHAIRMAN, LINCOLN COUNTY COMMISSIONERS

### Certificate of Clerk and Recorder:

STATE OF MONTANA, COUNTY OF LINCOLN FILED THIS 15th DAY OF

Oct. 1986, A.D. AT 11:55 O'CLOCK A. M.

*Janet B. F. Siegel* BY *Sherry L. Hawks*  
COUNTY CLERK RECORDER DEPUTY

Certificate of Survey number: 1511

### Certificate:

I HEREBY CERTIFY THAT I AM A REGISTERED  
LAND SURVEYOR IN THE STATE OF MONTANA.  
THAT THE SURVEY SHOWN ON THIS CERTIFICATE  
OF SURVEY HAS BEEN PREPARED IN ACCORDANCE  
WITH THE MONTANA CODE ANNOTATED (SECTIONS  
76-6-613) AND THE LINCOLN COUNTY REGULATIONS  
ADOPTED PURSUANT THERETO.

*Thomas C. Hill*  
THOMAS C. HILL  
MONTANA REGISTRATION NO. 5612S

