

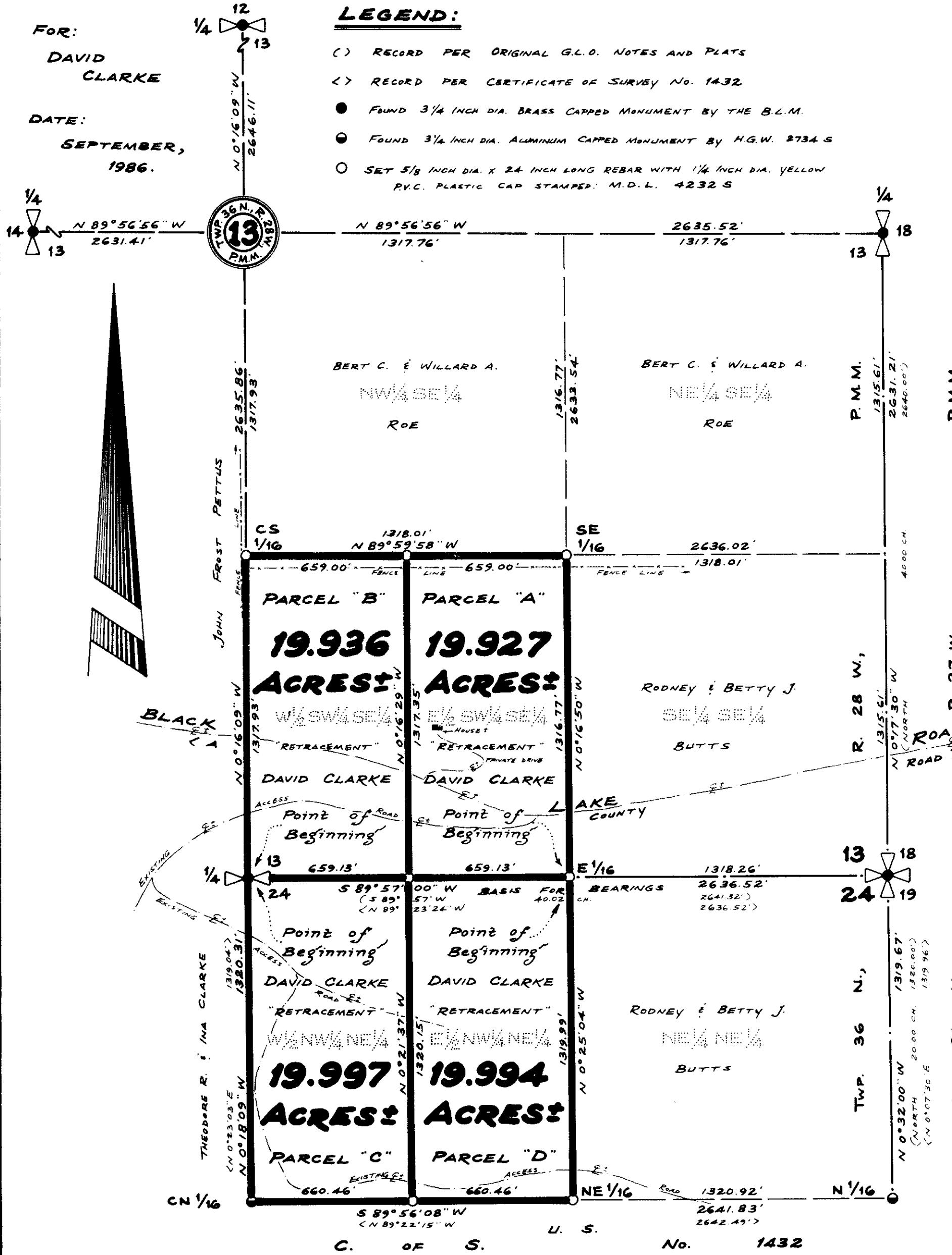
CERTIFICATE OF SURVEY

IN THE SW 1/4 OF THE SE 1/4 OF SECTION 13 AND THE NW 1/4 OF THE NE 1/4

For: DAVID CLARKE
DATE: SEPTEMBER, 1986.

LEGEND:

- () RECORD PER ORIGINAL G.L.O. NOTES AND PLATS
- < > RECORD PER CERTIFICATE OF SURVEY No. 1432
- FOUND 3/4 INCH DIA. BRASS CAPPED MONUMENT BY THE B.L.M.
- ⊙ FOUND 3/4 INCH DIA. ALUMINUM CAPPED MONUMENT BY H.G.W. 2734 S
- SET 5/8 INCH DIA. X 24 INCH LONG REBAR WITH 1/4 INCH DIA. YELLOW P.V.C. PLASTIC CAP STAMPED: M.D.L. 4232 S



DESCRIPTION PARCEL "A" OF SECTION 24 TWP. 36 N., R. 28 W., P.M.M.
 A tract of land near Rexford in Lincoln County, Montana, being the East 1/2 of the SW 1/4 of the SE 1/4 of Section 13 Twp. 36 N., R. 28 W., P.M.M., more particularly described as follows:
 Beginning at a 5/8 inch dia. rebar capped: MDL 4232S marking the East 1/16 corner of said Section 13 at a distance of 1318.26 feet S 89°57'00"W from a 3/4 inch dia. B.L.M. Brass Capped Monument marking the Southeast corner of said Section 13; thence, from said point of beginning, along the South line of said Section 13, S 89°57'00"W 659.13 feet to a 5/8 inch dia. rebar capped: MDL 4232S marking the Southwest corner of the East 1/2 of the SW 1/4 of the SE 1/4 of said Section 13; thence, along the West line of the East 1/2 of the SW 1/4 of the SE 1/4 of said Section 13, N 0°16'29"W 1317.35 feet to a 5/8 inch dia. rebar capped: MDL 4232S marking the Northwest corner thereof; thence, along the North line of the SW 1/4 of the SE 1/4 of said Section 13, S 89°59'58"E 659.00 feet to a 5/8 inch dia. rebar capped: MDL 4232S marking the SE 1/16 corner of said Section 13; thence, along the East line of the SW 1/4 of the SE 1/4 of said Section 13, S 0°16'50"E 1316.77 feet to the point of beginning.
 The aforescribed Parcel "A" contains 19.927 acres, more or less.

DESCRIPTION PARCEL "B"
 A tract of land near Rexford in Lincoln County, Montana, being the West 1/2 of the SW 1/4 of the SE 1/4 of Section 13 Twp. 36 N., R. 28 W., P.M.M., more particularly described as follows:
 Beginning at a 3/4 inch dia. B.L.M. Brass Capped Monument marking the South 1/4 corner of said Section 13; thence, along the West line of the SE 1/4 of said Section 13, N 0°16'09"W 1317.93 feet to a 5/8 inch dia. rebar capped: MDL 4232S marking the CS 1/16 corner of said Section 13; thence, along the North line of the SW 1/4 of the SE 1/4 of said Section 13, S 89°59'58"E 659.00 feet to a 5/8 inch dia. rebar capped: MDL 4232S marking the Northeast corner of the West 1/2 of the SW 1/4 of the SE 1/4 of said Section 13; thence, along the East line of the West 1/2 of the SW 1/4 of the SE 1/4 of said Section 13, S 0°16'29"E 1317.35 feet to a 5/8 inch dia. rebar capped: MDL 4232S marking the Southeast corner thereof; thence, along the South line of said Section 13, S 89°57'00"W 659.13 feet to the point of beginning.
 The aforescribed Parcel "B" contains 19.936 acres, more or less.

DESCRIPTION PARCEL "C"
 A tract of land near Rexford in Lincoln County, Montana, being the West 1/2 of the NW 1/4 of the NE 1/4 of Section 24 Twp. 36 N., R. 28 W., P.M.M., more particularly described as follows:
 Beginning at a 3/4 inch dia. B.L.M. Brass Capped Monument marking the North 1/4 corner of said Section 24; thence, along the West line of the NW 1/4 of said Section 24, S 0°18'09"E 1320.31 feet to a 3/4 inch dia. Aluminum Capped Monument by H.G.W. 2734S marking the CN 1/16 corner of said Section 24; thence, along the South line of the NW 1/4 of the NE 1/4 of said Section 24, N 89°56'08"E 660.46 feet to a 5/8 inch dia. rebar capped: MDL 4232S marking the Southeast corner of the West 1/2 of the NW 1/4 of the NE 1/4 of said Section 24; thence, along the East line of the West 1/2 of the NW 1/4 of the NE 1/4 of said Section 24, N 0°21'37"W 1320.15 feet to a 5/8 inch dia. rebar capped: MDL 4232S marking the Northeast corner thereof; thence, along the North line of said Section 24, S 89°57'00"W 659.13 feet to the point of beginning.
 The aforescribed Parcel "C" contains 19.997 acres, more or less.

DESCRIPTION PARCEL "D"
 A tract of land near Rexford in Lincoln County, Montana, being the East 1/2 of the NW 1/4 of the NE 1/4 of Section 24 Twp. 36 N., R. 28 W., P.M.M., more particularly described as follows:
 Beginning at a 5/8 inch dia. rebar capped: MDL 4232S marking the East 1/16 corner of said Section 24 at a distance of 1318.26 feet S 89°57'00"W from a 3/4 inch dia. B.L.M. Brass Capped Monument marking the Northeast corner of said Section 24; thence, from said point of beginning, along the North line of said Section 24, S 89°57'00"W 659.13 feet to a 5/8 inch dia. rebar capped: MDL 4232S marking the Northwest corner of the East 1/2 of the NW 1/4 of the NE 1/4 of said Section 24; thence, along the West line of the East 1/2 of the NW 1/4 of the NE 1/4 of said Section 24, S 0°21'37"E 1320.15 feet to a 5/8 inch dia. rebar capped: MDL 4232S marking the Southwest corner thereof; thence, along the South line of the NW 1/4 of the NE 1/4 of said Section 24, N 89°56'08"E 660.46 feet to a 5/8 inch dia. rebar capped: MDL 4232S marking the NE 1/16 corner of said Section 24; thence, along the East line of the NW 1/4 of the NE 1/4 of said Section 24, N 0°25'04"W 1319.99 feet to the point of beginning.
 The aforescribed Parcel "D" contains 19.994 acres, more or less.

PURPOSE OF SURVEY/EXEMPTION CERTIFICATION
 The purpose of this survey is to retrace the exterior boundaries of four aliquot parcels of land, as such being parcels not requiring a survey, a subdivision review or a sanitary review. This survey was done pursuant to Section 76-3-404, M.C.A.

APPROVED: This 16th day of September, 1986 A.D.

Bill J. Buckley
Examining Land Surveyor Registration No.

APPROVED: *Alan Thibault*
Chairman, Lincoln County, Montana Commissioners

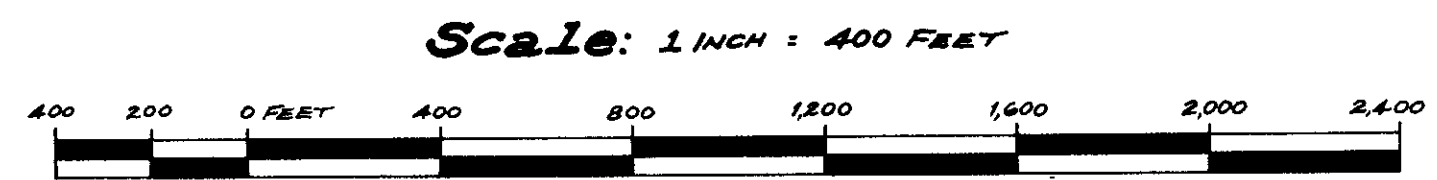
CERTIFICATE OF COUNTY CLERK AND RECORDER

STATE OF MONTANA.
COUNTY OF LINCOLN.

Filed on this 8th day of Oct., 1986 A.D. at 11:50'clock A.M.

Janet B. F. Siegel by *Sherry L. Hawks*
County Clerk and Recorder Deputy

CERTIFICATE OF SURVEY No. 1506



KOOTENAI ENGINEERING
 CIVIL ENGINEERING & LAND SURVEYING
 BOX H LIBBY, MONTANA 406-293-7721

COMPILED & DRAWN BY: L.A. DOLEZAL