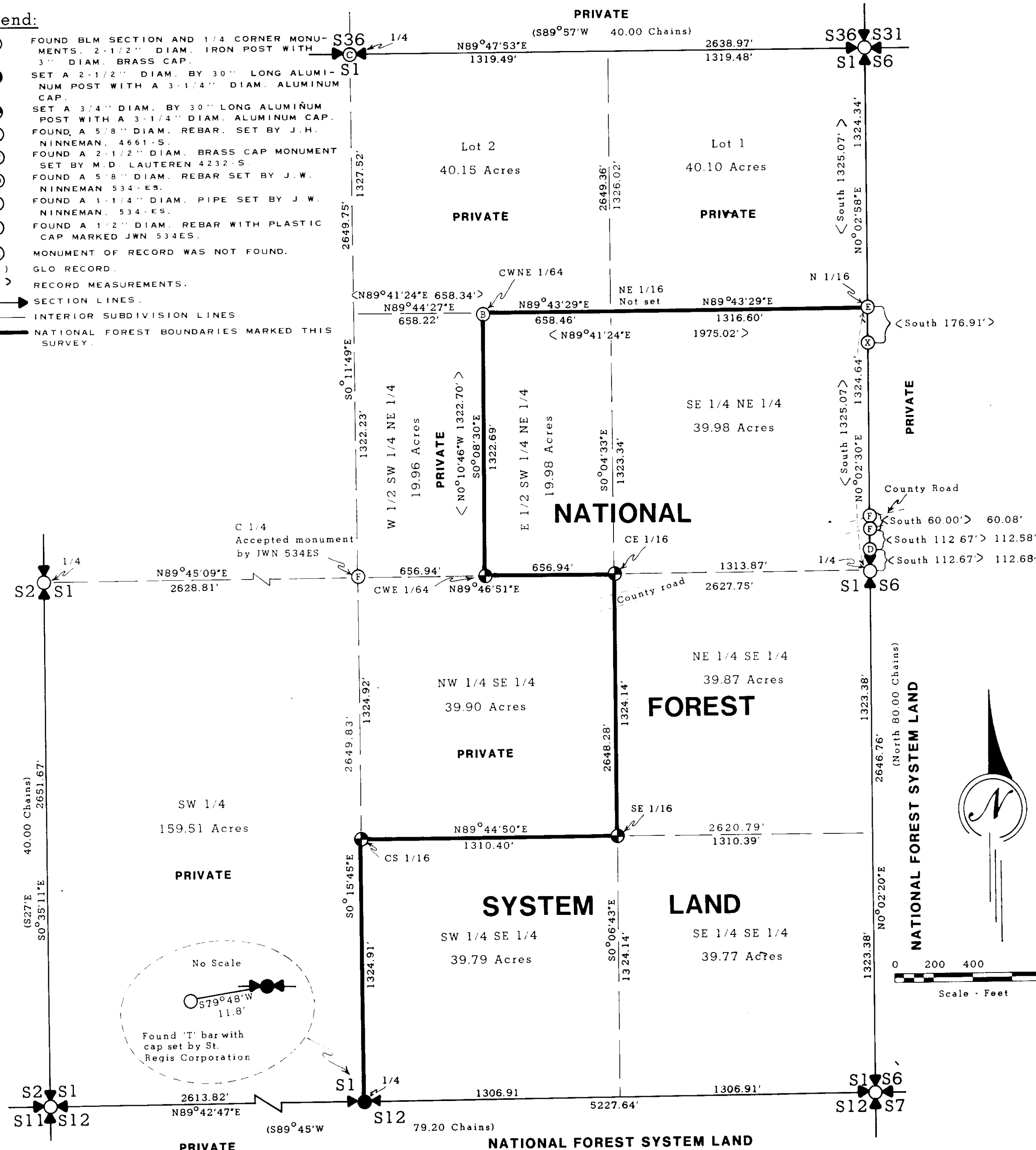


CERTIFICATE OF SURVEY
DEPENDENT RESURVEY AND SECTION SUBDIVISION
OF SECTION 1, T.29N., R.31W., P.M.M.
LINCOLN COUNTY, MONTANA **DECEMBER 1985**

Legend:

- FOUND BLM SECTION AND 1/4 CORNER MONUMENTS. 2-1/2" DIAM. IRON POST WITH 3" DIAM. BRASS CAP.
- SET A 2-1/2" DIAM. BY 30" LONG ALUMINUM POST WITH A 3-1/4" DIAM. ALUMINUM CAP.
- ⊙ SET A 3/4" DIAM. BY 30" LONG ALUMINUM POST WITH A 3-1/4" DIAM. ALUMINUM CAP.
- ⊙ FOUND A 5/8" DIAM. REBAR SET BY J.H. NINNEMAN. 4561-5.
- ⊙ FOUND A 2-1/2" DIAM. BRASS CAP MONUMENT SET BY M.D. LAUTEREN 4232-S.
- ⊙ FOUND A 5/8" DIAM. REBAR SET BY J.W. NINNEMAN. 534-ES.
- ⊙ FOUND A 1-1/4" DIAM. PIPE SET BY J.W. NINNEMAN. 534-ES.
- ⊙ FOUND A 1-1/2" DIAM. REBAR WITH PLASTIC CAP MARKED JWN 534ES.
- ⊙ MONUMENT OF RECORD WAS NOT FOUND.
- () GLO RECORD.
- < > RECORD MEASUREMENTS.
- SECTION LINES.
- INTERIOR SUBDIVISION LINES
- NATIONAL FOREST BOUNDARIES MARKED THIS SURVEY.



Forest Supervisor's Certificate:

I HEREBY CERTIFY THAT THE SURVEY SHOWN HEREON, WAS CONDUCTED FOR THE PURPOSE OF NATIONAL FOREST MANAGEMENT AND IN ACCORDANCE WITH THE POLICIES SET FORTH IN FSM 7152.

FOREST SUPERVISOR William D. Berry DATE 2/25/86

Purpose of Survey:

THE PURPOSE OF THIS SURVEY IS TO LOCATE UPON THE GROUND, THE TITLE LINES OF RECORD BETWEEN PRIVATE AND NATIONAL FOREST SYSTEM LANDS. NO DIVISION OF LAND IS HEREBY CREATED.

Basis of Bearing:

ALL BEARINGS ARE BASED UPON TIES TO NATIONAL GEODETIC SURVEY CONTROL STATIONS SHELDON AND SWEDE.

Method of Survey:

THE SURVEY SHOWN HEREON WAS CONDUCTED UTILIZING CONVENTIONAL TRAVERSE, TRIANGULATION, AND TRILATERATION METHODS. EQUIPMENT USED CONSISTED OF THEODOLITE AND ELECTRONIC DISTANCE METERS. ALL MEASUREMENTS SHOWN HEREON HAVE BEEN TRANSLATED TO TRUE PROJECT DATUM FROM MONTANA COORDINATE SYSTEM (NORTH ZONE), UTILIZING A MEAN PROJECT ELEVATION OF 2400 FEET ABOVE SEA LEVEL, A SCALE FACTOR OF 1.000143104, AND A ROTATION THETA ANGLE OF -04°28'55", AS COMPUTED FROM U.S. NATIONAL GEODETIC SURVEY PLANE COORDINATE PROJECTION TABLES, MONTANA ABOUT THE 1/4 CORNER SECTIONS 1 AND 12.

Legal Description:

NATIONAL FOREST LANDS DESCRIBED HEREON - SE 1/4 NE 1/4, E 1/2 SW 1/4 NE 1/4, NE 1/4 SE 1/4, AND S 1/2 SE 1/4.
PRIVATE LANDS (NUMEROUS LAND OWNERS) DESCRIBED HEREON - EXTERIORS OF THE N 1/2 NE 1/4, W 1/2 SW 1/4 NE 1/4, NW 1/4 SE 1/4, AND SW 1/4.

History:

THE SURVEY OF THE LIBBY CREEK GUIDE MERIDIAN AND SUBDIVISION OF THIS TOWNSHIP CREATING THIS SECTION, WAS DONE BY DANIEL P. MUMBRUE IN JUNE-AUGUST, 1893.

REMONUMENTATION OF ALL CONTROLLING CORNERS, EXCEPT THE 1/4 CORNER OF SECTIONS 1 AND 12 WHICH WAS RE-ESTABLISHED IN THIS SURVEY, WAS DONE BY THE BLM IN 1963-1964. REFER TO THE FILED CORNER RECORDATIONS.

NUMEROUS DEED EXHIBITS PLATS, AND CERTIFICATES OF SURVEYS NOS. 308, 331, 455, 455A, 459, AND 1057 ARE ON FILE IN THIS SECTION.

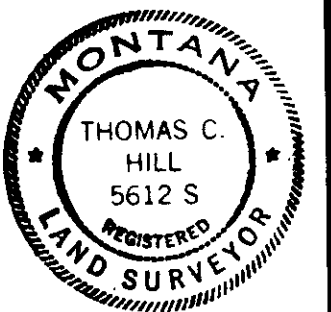
Surveyor's Notes:

FINDING THE MONUMENT FOR THE C 1/4 AS DETERMINED BY BURDICK AND REMONUMENTED BY NINNEMAN WITHIN AN ACCEPTABLE ERROR CIRCLE, I REFERENCE THE MONUMENT AND UTILIZE THEIR POSITION AS THE TRUE POSITION, FOR FURTHER SECTION BREAKDOWN.

Certificate:

I HEREBY CERTIFY THAT I AM A REGISTERED LAND SURVEYOR IN THE STATE OF MONTANA, THAT THE SURVEY SHOWN ON THIS CERTIFICATE HAS BEEN PREPARED IN ACCORDANCE WITH THE MONTANA CODE ANNOTATED (SECTIONS 76-3-101 THROUGH 76-6-613) AND THE LINCOLN COUNTY REGULATIONS ADOPTED PURSUANT THERETO.

Thomas C. Hill
THOMAS C. HILL
MONTANA REGISTRATION NO. 5612S



Certificate of Examining Land Surveyor:

APPROVED THIS 26th DAY OF Feb 1986, A.D.

Bill B. B. B.
EXAMINING LAND SURVEYOR

APPROVED: B.W. Lindsey CHAIRMAN, LINCOLN COUNTY COMMISSIONERS

Certificate of Clerk and Recorder:

STATE OF MONTANA, COUNTY OF LINCOLN, FILED THIS 26th DAY OF

Feb 1986 A.D. AT 4:25 O'CLOCK P. M.

Janet B. F. Sigel BY Sherry L. Hawks
COUNTY CLERK RECORDER DEPUTY

Certificate of Survey Number: 1455