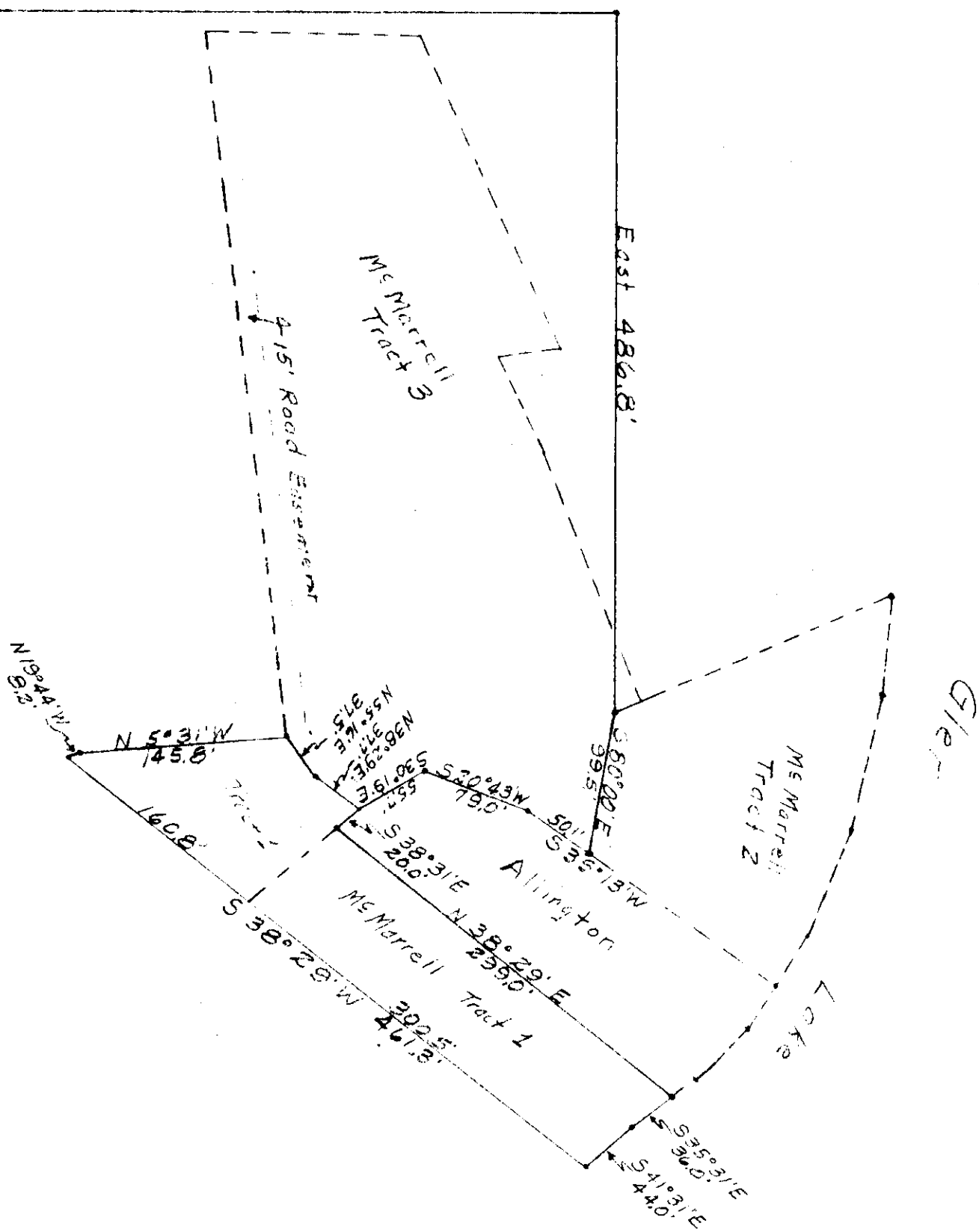


RETRACTMENT OF MAC MURRELL PROPERTY (TRACT 1)  
IN GOV. LOT 3 OF SECTION 27,  
T 36 N R 26 W M.P.M.,  
LINCOLN COUNTY, MONTANA



DESCRIPTION

A tract of land in Gov. Lot 3, of Section 27, T36N R26W M.P.M., Lincoln County, Montana, more particularly described as follows:  
Beginning at a point which is North a distance of 1145.50', East a distance of 486.90', S80°00'E a distance of 99.50', S35°13'W a distance of 50.10', S20°43'W a distance of 79.00' and S30°19'E a distance of 56.70' from the SW Corner of Gov. Lot 3, of section 27, T36N R26W M.P.M., Lincoln County, Montana; thence S80°31'E a distance of 20.00'; thence N38°29'E a distance of 299.00'; thence S35°31'E a distance of 36.00'; thence S41°31'E a distance of 44.00'; thence S38°29'W a distance of 461.80'; thence N19°44'W a distance of 6.20'; thence N 50°31'W a distance of 145.50'; thence N50°16'E a distance of 37.50'; thence N38°29'E a distance of 37.70' to the point of beginning, containing 0.82 Acre, more or less.

LEGEND  
Bearings from G.L.O. data.  
Iron pins or pipe at angle points.  
Scale 1" = 100'

SW Cor Gov Lot 3  
Sec. 27 T 36 N R 26 W

CERTIFICATE OF SURVEY

I, Kenneth Haskell, do hereby certify that a survey was made under my supervision and the plat herewith is an accurate representation of said survey.

*Kenneth Haskell* 5-21-74 *Bill Buck*  
Kenneth Haskell  
Montana Registration No. 270-E3  
checked by

*Bill Dunsen*  
County Commissioner

STATE OF MONTANA, COUNTY OF LINCOLN, FILED THIS 29<sup>th</sup> DAY OF JULY, 1986, AT 2:15 O'CLOCK P.M.  
*David B. Smith* by *Dwaine Almaraz*  
COUNTY CLERK AND RECORDER DEPUTY

# 1446

CS#1446