

NOTE:

Due to a lack of specific datum being on record at the Lincoln County, Montana Clerk and Recorder's Office relative to U.S. Army Corps of Engineers surveying and land acquisitions in the Subject Section 20 Twp. 37N., R. 27W., P.M.M.; we went directly to the Corps of Engineers for specific datum to qualify the monuments that we found on the ground established by them. Since the Corps of Engineers has acquired land based upon their survey and monuments they have established on the ground, we accepted these monuments as controlling representation of property lines for this survey.

17 16
20 21

LINCOLN COUNTY, MONTANA.

CERTIFICATE OF SURVEY

IN THE SW 1/4 OF THE SW 1/4 OF THE NW 1/4 OF SECTION 20 TWP. 37 N., R. 27 W., P.M.M.

FOR: H.D. & EVELYN E. SMILEY

DATE: NOVEMBER, 1985

DESCRIPTION PARCEL "A" - "OCCASIONAL SALE"

A tract of land near Eureka in Lincoln County, Montana, lying within the SW 1/4 of the SW 1/4 of the NW 1/4 of Section 20 Twp. 37N., R. 27W., P.M.M. as monumented by the Corps of Engineers, more particularly described as follows:

Beginning at a 2 1/2 inch dia. Brass Capped Monument marking the West 1/4 Corner of said Section 20; thence, along the west line of said Section 20, N 0°17'04"E 215.14 feet to a 3 1/2 inch dia. Brass Cap set in concrete; thence, continuing along said West line, N 0°17'04"E 449.24 feet for a total distance of 664.38 feet to a 3 1/2 inch dia. Brass Cap set in concrete marking the Northwest corner of the SW 1/4 of the NW 1/4 of said Section 20; thence, along the North line of the SW 1/4 of the NW 1/4 of said Section 20, S 89°58'05"E 253.60 feet to a 3 1/2 inch dia. Brass Cap set in concrete; thence, continuing along said North line, S 89°58'05"E 306.72 feet to a 5/8 inch dia. rebar capped: MDL 4232S set as a witness corner on the west line of a 60.00 foot wide Easement per Microfilm Book 43 Page 771; thence, continuing along said North line, S 89°58'05"E 30.00 feet for a total distance of 590.32 feet to a point in the centerline of said 60.00 foot wide Easement at a distance of 70.00 feet N 89°58'05"W from a 3 1/2 inch dia. Brass Cap set in concrete marking the Northeast corner of the SW 1/4 of the NW 1/4 of said Section 20; thence, leaving said North line, along the centerline of said 60.00 foot wide Easement, S 0°15'18"W 664.80 feet to a point on the North line of a tract of land per microfilm Book 48 Page 193 on the South line of the SW 1/4 of the NW 1/4 of said Section 20; thence, leaving said centerline, along said North line, also said South line, S 89°58'56"W 30.00 feet to a 3 1/2 inch dia. Brass Cap set in concrete marking the Northwest corner of said tract of land per microfilm book 48 Page 193 on the West line of said 60.00 foot wide Easement; thence, continuing along the South line of the SW 1/4 of the NW 1/4 of said Section 20, N 89°55'21"W 560.66 feet to the point of beginning.

The aforescribed Parcel "A" contains 9.009 acres, more or less, and is SUBJECT to the Westerly 30.00 feet of a 60.00 foot wide Easement per Microfilm Book 43 Page 771 along an Existing Access Road lying parallel with and immediately adjacent to the entire East line of the aforescribed Parcel "A"; said 30.00 foot Easement contains 0.458 acre, more or less, leaving a Net Area of 8.551 acres, more or less. The aforescribed Parcel "A" also INCLUDES the use of the Easterly 30.00 feet of said 60.00 foot wide Easement, all as delineated hereon.

PURPOSE OF SURVEY/EXEMPTION CERTIFICATION

We hereby certify that the purpose for the division of Parcel "A" is to transfer ownership of said Parcel "A" created as an Occasional Sale; furthermore, we certify that we are entitled to use this exemption in that we are in compliance with all conditions imposed in the use of this exemption; therefore, this division of land is exempt from review as a Subdivision pursuant to Section 76-3-207 (d), M.C.A.

Date: 10 DEC 1985 H.D. Smiley Evelyn E. Smiley

STATE OF MONTANA. COUNTY OF LINCOLN.

On this 10th day of December, 1985 A.D., before me, a Notary Public in and for the State of Montana, personally appeared H.D. and Evelyn E. Smiley, known to me to be the persons whose names are subscribed to the within instrument, and acknowledged to me that they executed the same.

Sharon Harrington April 18, 1986 Notary Public My Commission Expires

APPROVED: This 23rd day of January, 1986 A.D.

Bill Siskoff Examining Land Surveyor Registration No.

TREASURER'S CERTIFICATION

I hereby certify that no real property taxes assessed and levied on the aforescribed land to be divided are delinquent.

Dated this 29 day of January, 1985 A.D. Delores J. Hornack Treasurer, Lincoln County, Montana

APPROVED: B.W. Lindsay Chairman, Lincoln County, Montana Commissioners

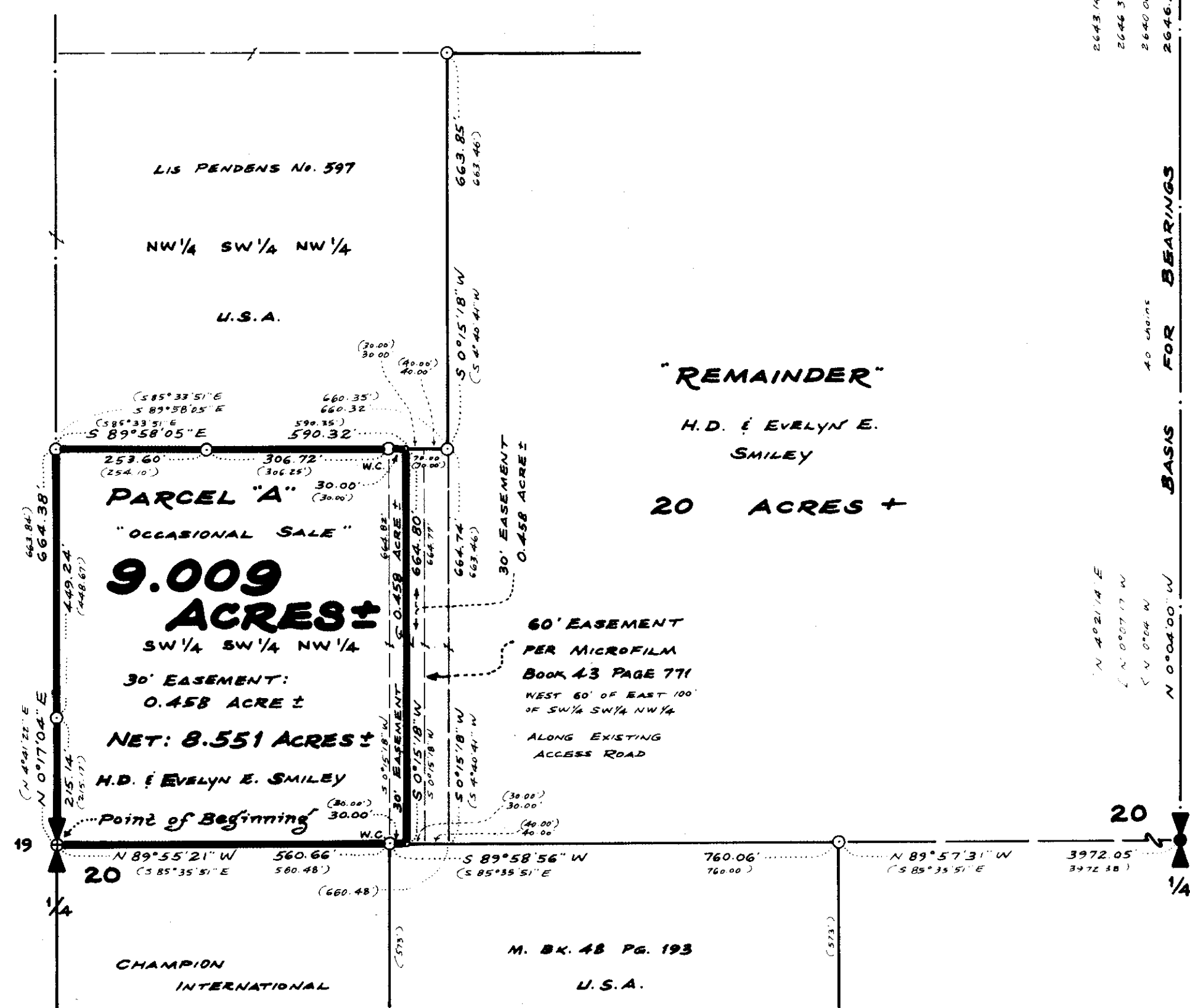
CERTIFICATE OF COUNTY CLERK AND RECORDER

STATE OF MONTANA. COUNTY OF LINCOLN.

Filed on this 24th day of January, 1986 A.D. at 2:10 o'clock P.M.

Janet B. Sigel by Tammi Dennis County Clerk and Recorder Deputy

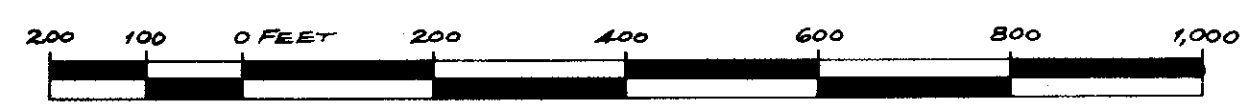
CERTIFICATE OF SURVEY NO. 1445



LEGEND:

- () RECORD PER ORIGINAL G.L.D. NOTES AND PLATS
() RECORD PER UNRECORDED CORPS OF ENGINEERS DATUM
[] RECORD PER C. OF S. No. 632
* FOUND 2 1/2 INCH DIA. CORPS OF ENGINEERS BRASS CAPPED MONUMENT
* FOUND 3/4 INCH DIA. B.L.M. BRASS CAPPED MONUMENT
* FOUND 3 1/2 INCH DIA. CORPS OF ENGINEERS BRASS CAP SET IN CONCRETE
* FOUND 2 1/2 INCH DIA. CORPS OF ENGINEERS BRASS CAPPED MONUMENT
o COMPUTED POINT - NOT FOUND OR SET
o SET 5/8 INCH DIA. x 24 INCH LONG REBAR WITH 1/4 INCH DIA. YELLOW P.V.C. PLASTIC CAP STAMPED: MDL 4232 S

Scale: 1 INCH = 200 FEET



KOOTENAI ENGINEERING CIVIL ENGINEERING & LAND SURVEYING BOX H LIBBY, MONTANA 406-293-7721

COMPILED & DRAWN BY: L.A. DOLEZAL

Sanitary Restrictions Permitted... #4293-A