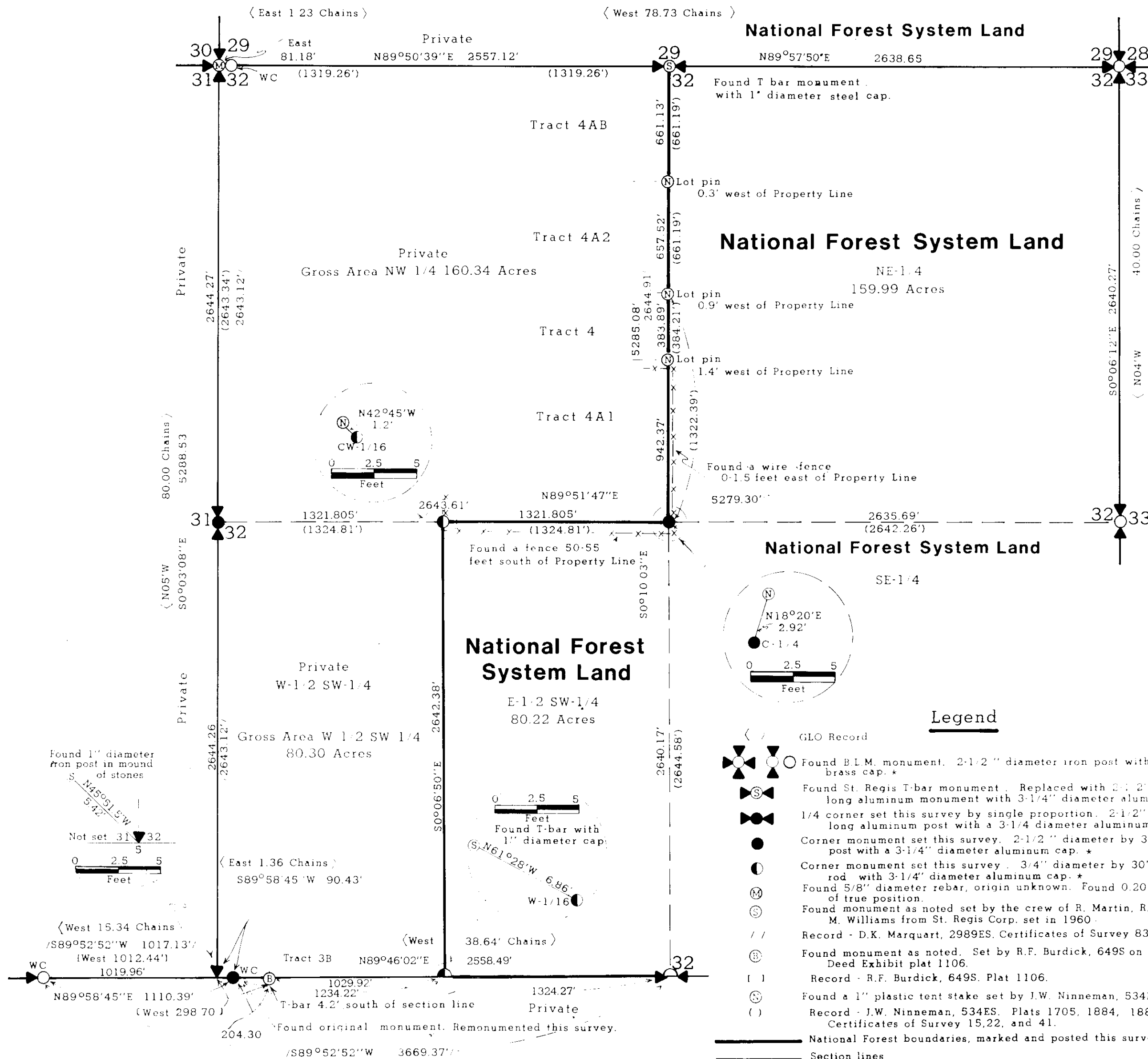
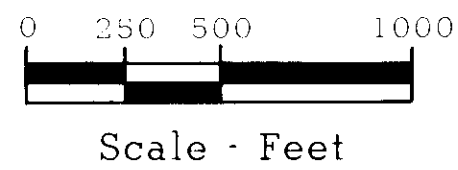


CERTIFICATE OF SURVEY

DEPENDENT RESURVEY AND SECTION SUBDIVISION OF SECTION 32, T.29N., R.30W., P.M.M.

LINCOLN COUNTY, MONTANA SEPTEMBER 1985



- #### Legend
- GLO Record
 - Found B.L.M. monument. 2-1/2" diameter iron post with 3" diameter brass cap. *
 - Found St. Regis T-bar monument. Replaced with 2-1/2" diameter by 30" long aluminum monument with 3-1/4" diameter aluminum cap. *
 - 1/4 corner set this survey by single proportion. 2-1/2" diameter by 30" long aluminum post with a 3-1/4" diameter aluminum cap. *
 - Corner monument set this survey. 2-1/2" diameter by 30" long aluminum post with a 3-1/4" diameter aluminum cap. *
 - Corner monument set this survey. 3-4" diameter by 30" long aluminum rod with 3-1/4" diameter aluminum cap. *
 - Found 5/8" diameter rebar, origin unknown. Found 0.20 South by 0.03 East of true position.
 - Found monument as noted set by the crew of R. Martin, R. Guezler, M. Williams from St. Regis Corp. set in 1960.
 - Record - D.K. Marquart, 2989ES. Certificates of Survey 839, 843, and 1251.
 - Found monument as noted. Set by R.F. Burdick, 649S on Deed Exhibit plat 1106.
 - Record - R.F. Burdick, 649S. Plat 1106.
 - Found a 1" plastic tent stake set by J.W. Ninneman, 534ES.
 - Record - J.W. Ninneman, 534ES. Plats 1705, 1884, 1885, and 2373. Certificates of Survey 15, 22, and 41.
 - National Forest boundaries, marked and posted this survey.
 - Section lines
 - Section subdivision lines

Forest Supervisor's Certificate:
I hereby certify that the survey shown hereon, was conducted for the purpose of National Forest management and in accordance with the policies set forth in FSM 7152.
Forest Supervisor William D. Berry Date 1/27/85

Purpose of Survey:
The purpose of this survey is to locate, upon the ground, the title lines of record between National Forest system Lands and private lands, and no division of land is hereby created.

Legal Description:
National Forest System Lands defined hereon: Section 32, T.29N., R.30W., P.M.M. NE-1/4, SE-1/4, and E-1/2 SW-1/4.
Portions of private lands defined hereon: Section 32, T.29N., R.30W., P.M.M. W 1/2 SW 1/4 and NW 1/4

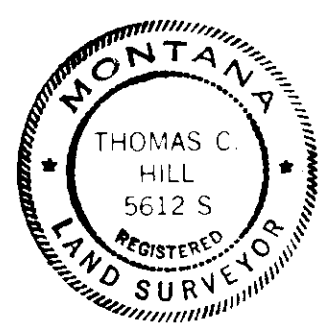
Method of Survey:
This survey was accomplished by triangulation and trilateration control traverse and conventional Theodolite-EDM traverse, in the fall of 1984, and spring-summer 1985.

Basis of Bearing:
Solar observation

History:
Resurvey of the 7th standard parallel was performed by Paul S. A. Bickel in April 1898.
Subdivision of township creating this section performed by Paul S. A. Bickel in April 1898.
Remonumentation of certain original corners was performed by the BLM in 1963 and 1964.
Re-establishment of the 1/4 section corner of Sections 29 and 32 was done by a crew of F. Martin, R. Guezler, and M. Williams of St. Regis Corporation in 1960.
Plats of record: 1106, 1705, 1884 and 2373.
Certificates of Survey on file: 15, 22, 41, 839, 1251.

Surveyor's Notes:
The positions for the C 1/4 and CW 1/16 as determined by J. W. Ninneman, 543ES, were not accepted in this survey due to the record not illustrating proper methods for re-establishment of the 1/4 31/32, which controls their positions.
Acceptable documentation was found for the re-establishment of the 1/4 29/32 and therefore accepted as monumented by St. Regis.

Certificate:
I hereby certify that I am a registered land surveyor in the state of Montana, that the survey shown on this Certificate of Survey has been prepared in accordance with the Montana Code Annotated, (Sections 76-3-101 through 76-6-613), and the Lincoln County regulations adopted pursuant thereto.
Thomas C. Hill
Thomas C. Hill,
Montana Registration No. 5612S



Certificate of Examining Land Surveyor:
Approved this 23rd day of January 1986, A.D.
David D. Burdick
Examining Land Surveyor
Approved: R. W. Lindsey
Chairman, Lincoln County Commissioners

Certificate of Clerk and Recorder:
State of Montana, County of Lincoln filed this 29th day of January 1986, A.D. at 1:35 o'clock P. M.
David B. Sigel by Jessie Stennis
County Clerk Recorder Deputy
Certificate of Survey number 1440

* Refer to filed corner recordings.