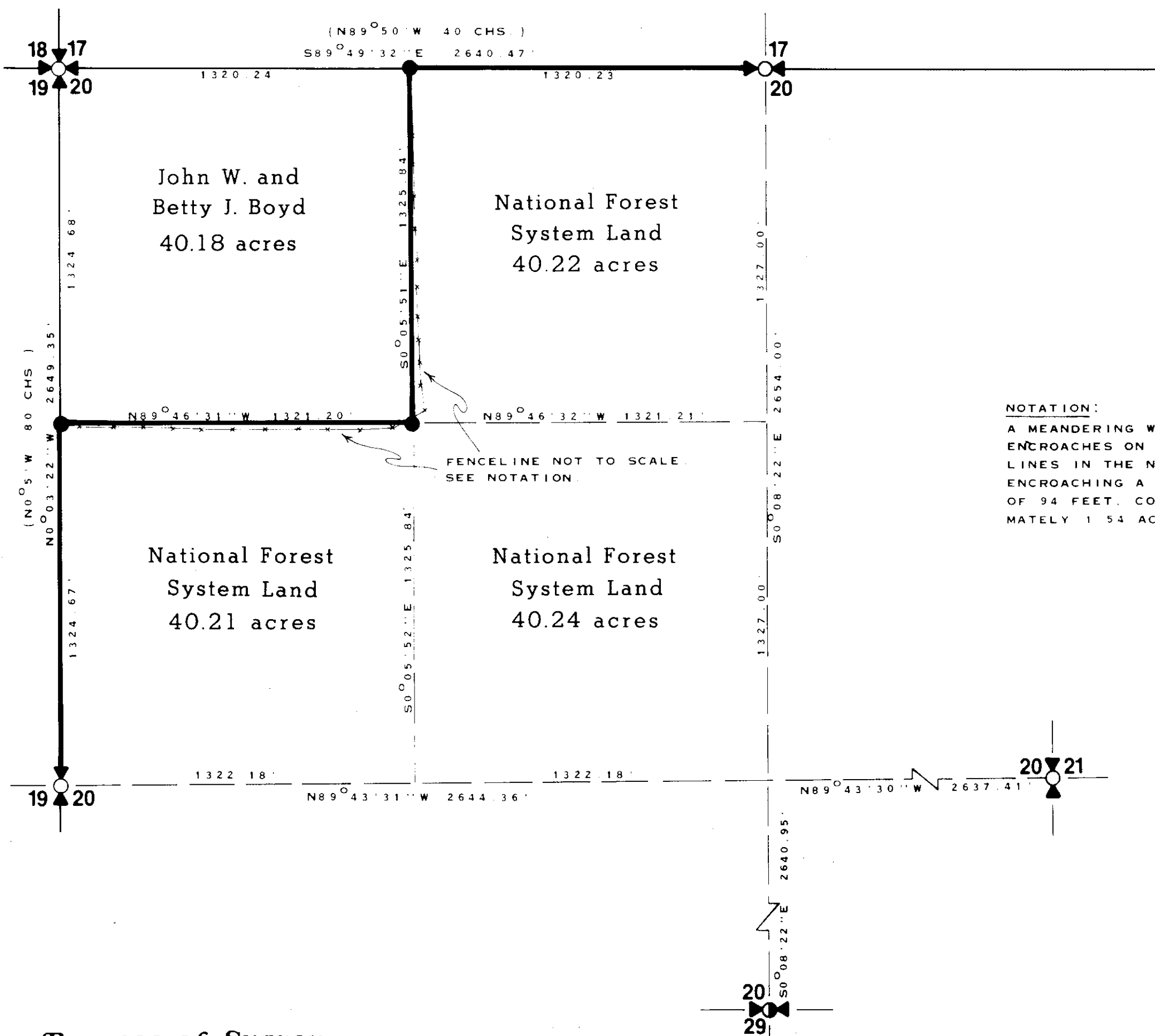


Certificate of Survey

Dependent Resurvey & Subdivision of NW 1/4 of Sec. 20, T.29N., R.30W., P.M.M.

Lincoln County, Montana August 1985



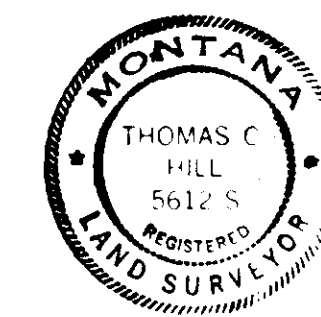
NOTATION:
A MEANDERING WIRE FENCE LINE ENCROACHES ON THE SUBDIVISIONAL LINES IN THE NW 1/4 NW 1/4, ENCROACHING A MAXIMUM DISTANCE OF 94 FEET, CONTAINING APPROXIMATELY 1.54 ACRES

Legend:

- FOUND SECTION CORNER - 2-1/2" DIAMETER IRON POST WITH 3-1/4" DIAMETER BLM BRASS CAP MONUMENT, 1964.
- FOUND 1/4 CORNER - 2-1/2" DIAMETER IRON POST WITH 3-1/4" DIAMETER BLM BRASS CAP MONUMENT, 1964.
- 1/4 CORNER MONUMENT SET BY ORIGINAL EVIDENCE (BEARING TREES) SET 2-1/2" X 30" ALUMINUM PIPE WITH 3-1/4" ALUMINUM CAP MARKED 5612S.
- CORNER MONUMENT SET THIS SURVEY - 3/4" X 30" ALUMINUM ROD WITH 3-1/4" ALUMINUM CAP MARKED 5612S, SET BY INTERSECTION.
- SECTION LINE
- SECTION SUBDIVISION LINE
- BRUSHED, BLAZED AND POSTED LINE
- GENERAL LAND OFFICE RECORD

Certificate:

I HEREBY CERTIFY THAT I AM A REGISTERED LAND SURVEYOR IN THE STATE OF MONTANA, THAT THE SURVEY SHOWN ON THIS PLAT HAS BEEN PREPARED IN ACCORDANCE WITH THE MONTANA CODE ANNOTATED (SECTIONS 76-3-101 THROUGH 76-6-613) AND THE LINCOLN COUNTY REGULATIONS ADOPTED PURSUANT THERETO.



Thomas C Hill 9-9-85
THOMAS C. HILL
MONTANA REGISTRATION NO. 5612S

Certificate of Examining Land Surveyor:

APPROVED THIS 10th DAY OF SEPTEMBER 1985, A.D.
Mark E. Bunker 4974-S
EXAMINING LAND SURVEYOR REGISTRATION NO.

APPROVED *R.W. Lindsey*
CHAIRMAN, LINCOLN COUNTY COMMISSIONERS

Certificate of Clerk & Recorder:

STATE OF MONTANA, COUNTY OF LINCOLN, FILED THIS
11th DAY OF September 1985, A.D.
AT 2:15 O'CLOCK P. M.
Janet B. DeSibel BY *Janice Altemus*
COUNTY CLERK RECORDER DEPUTY

Purpose of Survey:

THE PURPOSE OF THIS SURVEY IS TO LOCATE UPON THE GROUND, THE TITLE LINES OF RECORD BETWEEN NATIONAL FOREST SYSTEM LANDS AND PRIVATE LANDS, AND NO DIVISION OF LAND IS HEREBY CREATED.

I HEREBY CERTIFY THAT THE SURVEY SHOWN HEREON, WAS CONDUCTED FOR THE PURPOSE OF NATIONAL FOREST MANAGEMENT AND IN ACCORDANCE WITH THE POLICIES SET FORTH IN FSM 7152.

William H. Perry 9/5/85
FOREST SUPERVISOR DATE

History:

ORIGINAL GLO SURVEY 1898 BY P.S. BICKEL. REMONUMENTATION BY THE BUREAU OF LAND MANAGEMENT 1964. FOR FURTHER INFORMATION ON CORNERS SET THIS SURVEY, SEE CERTIFIED CORNER RECORDATION FILED AT LINCOLN COUNTY COURTHOUSE.

Legal Description:

NATIONAL FOREST SYSTEM LANDS DEFINED HEREON - NE 1/4 NW 1/4, S 1/2 NW 1/4, SECTION 20, T.29N., R.30W., P.M.M.

Survey Method:

THIS SURVEY WAS ACCOMPLISHED WITH A THEODOLITE-EDM TRAVERSE, AUGUST 1985.

Basis of Bearing:

SOLAR OBSERVATION