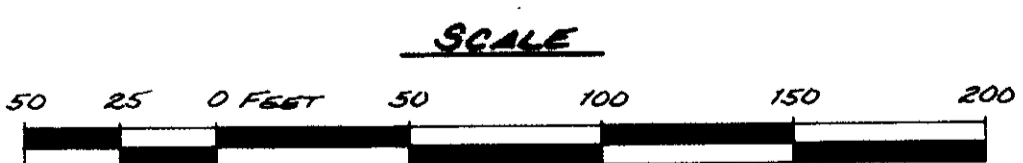
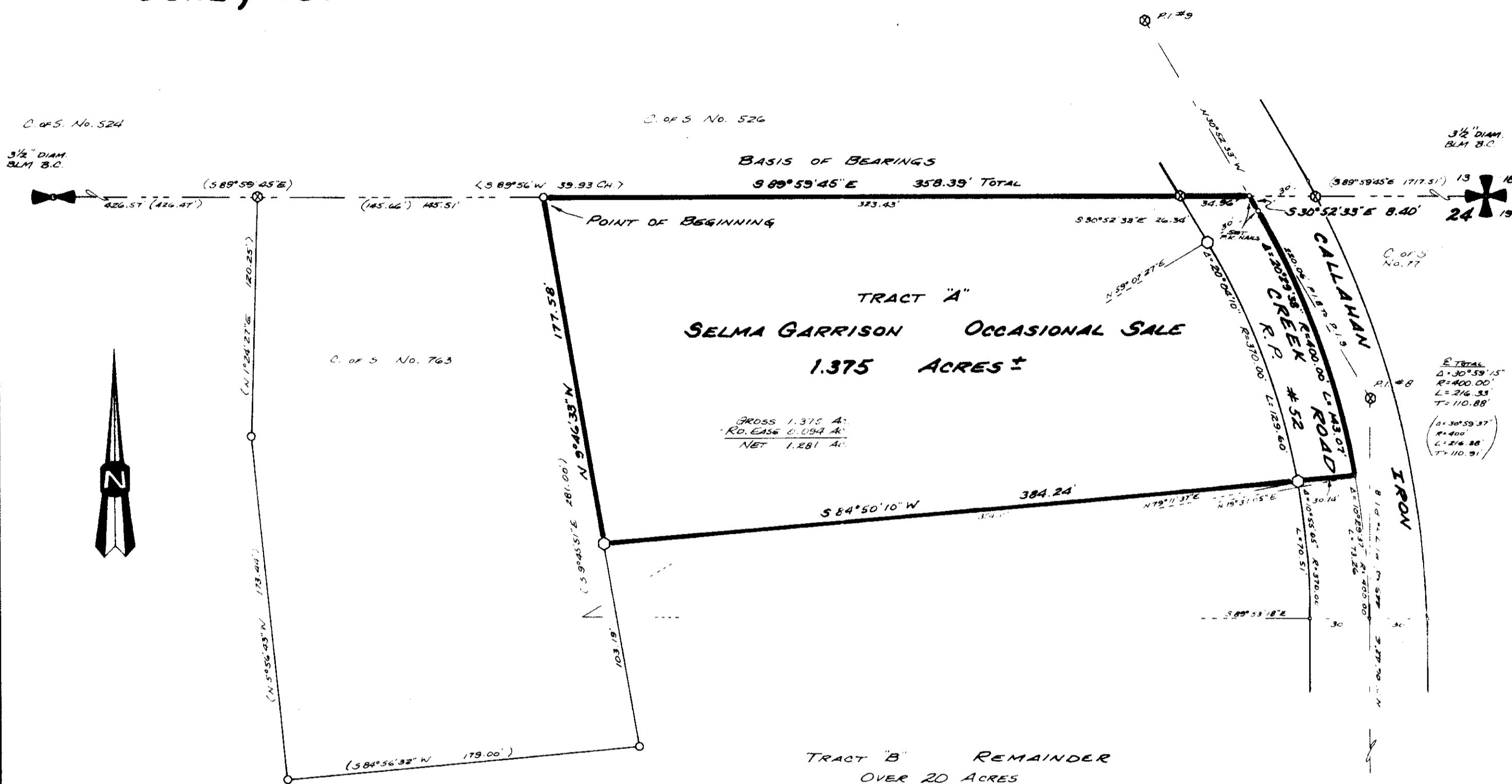


CERTIFICATE OF SURVEY

IN THE NW 1/4 NE 1/4 OF SECTION 24, TOWNSHIP 31 NORTH, RANGE 34 WEST, P.M.M.

JUNE, 1984



NINNEMAN ENGINEERING TROY, MONTANA

EXAMINED AND APPROVED FOR LINCOLN COUNTY BY: Dick Duerhoff 3-25-85
DATE

APPROVED: B.W. Jindrey
Chairman Board of Commissioners

ATTESTED: Janet D. Siegel
County Clerk and Recorder

Dated this 27th day of March, 1985

STATE OF MONTANA COUNTY OF LINCOLN

Filed on this 27th day of March, 19 85
at 1:05 o'clock P.M.

Janet D. Siegel
County Clerk and Recorder

by Sherry L. Hawks
Deputy

Certificate of Survey No. 1378

