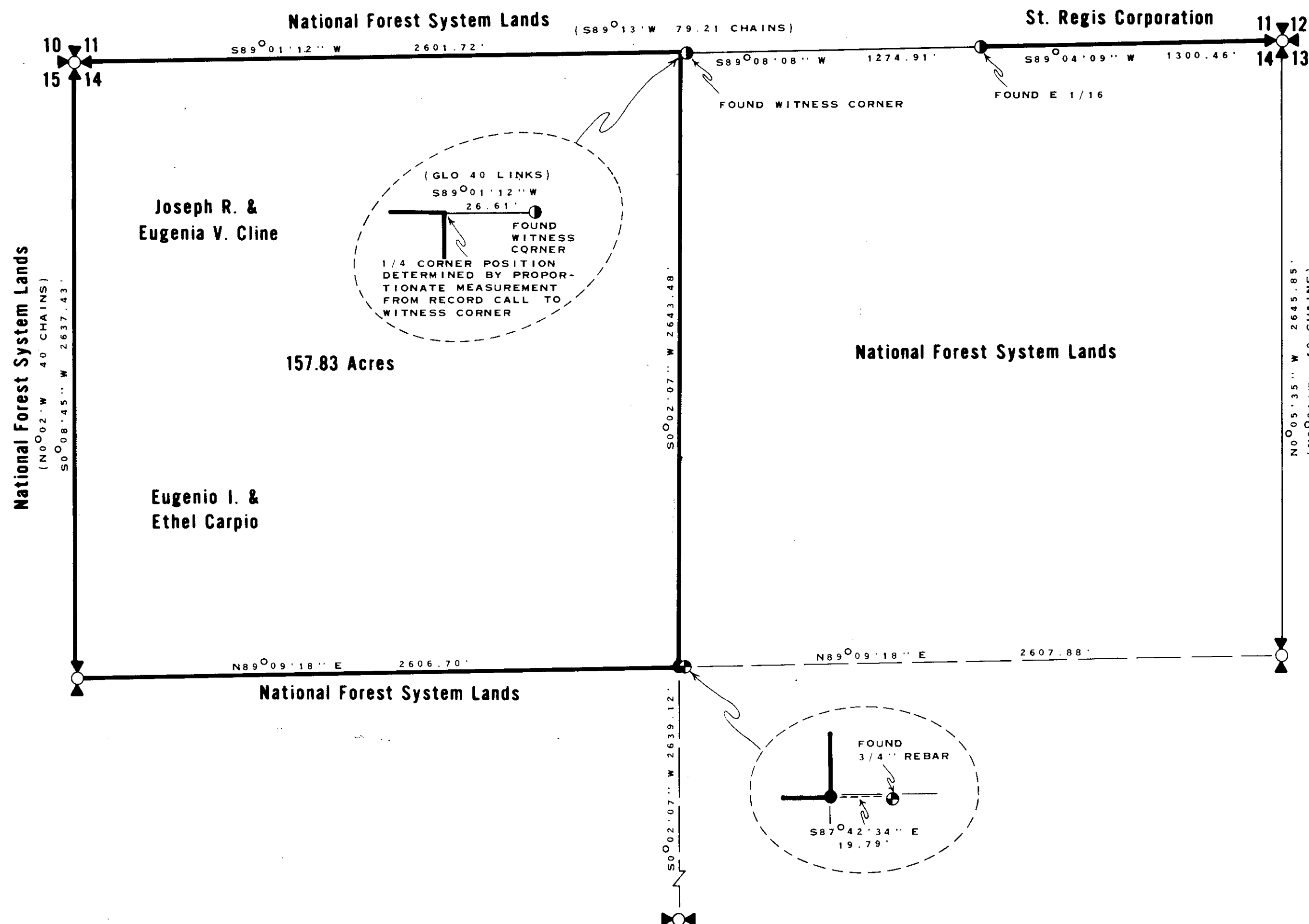


Certificate of Survey

Dependent Resurvey & Subdivision of Sec. 14, T.29N., R.31W., P.M.M. Lincoln County, Montana December 1984



Legend:

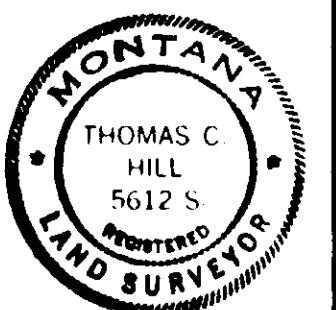
- FOUND SECTION CORNER - 1963 BLM BRASS CAP MONUMENT
- FOUND 1/4 CORNER - 1963 BLM BRASS CAP MONUMENT
- FOUND CORNER MONUMENT - 1" IRON WITH A 1/4" METAL CAP MARKED "SURVEY POINT", BY ST. REGIS CORPORATION, 1960.
- FOUND CORNER MONUMENT - 3/4" INCH REBAR BY J.W.N. 534E.S. REFER TO CORNER RECORDATION BOOK 1, PAGE 50, LINCOLN COUNTY COURTHOUSE.
- CORNER MONUMENT SET THIS SURVEY - 2-1/2" X 30" ALUMINUM PIPE WITH 3-1/4" ALUMINUM CAP MARKED 5612-S. SET BY INTERSECTION.
- SECTION LINE
- SECTION SUBDIVISION LINE
- BRUSHED, BLAZED AND POSTED LINE
- GENERAL LAND OFFICE RECORD



Certificate:

I HEREBY CERTIFY THAT I AM A REGISTERED LAND SURVEYOR IN THE STATE OF MONTANA, THAT THE SURVEY SHOWN ON THIS PLAT HAS BEEN PREPARED IN ACCORDANCE WITH THE MONTANA CODE ANNOTATED (SECTIONS 76-3-101 THROUGH 76-6-613) AND THE LINCOLN COUNTY REGULATIONS ADOPTED PURSUANT THERETO.

Thomas C. Hill
THOMAS C. HILL
MONTANA REGISTRATION NO. 5612S



Purpose of Survey:

THE PURPOSE OF THIS SURVEY IS TO LOCATE, UPON THE GROUND, THE TITLE LINES OF RECORD BETWEEN NATIONAL FOREST SYSTEM LANDS AND PRIVATE LANDS. AND NO DIVISION OF LAND IS HEREBY CREATED.

History:

ORIGINAL GLO SURVEY 1893 BY D.P. MUMBRUE; REMONUMENTATION BY THE BUREAU OF LAND MANAGEMENT 1963; SURVEY NORTH LINE SECTION 14 BY ST. REGIS CORPORATION 1960, FIELD NOTES AT ST. REGIS CORPORATION, LIBBY, MONTANA; SURVEY BY J.W. NINNEMAN 534E.S., 1966, FILED CORNER RECORDATION BOOK 1, PAGE 50, LINCOLN COUNTY COURTHOUSE. FOR FURTHER INFORMATION ON CORNERS SET THIS SURVEY SEE CERTIFIED CORNER RECORDATION FILED AT LINCOLN COUNTY COURTHOUSE.

Legal Description:

NATIONAL FOREST SYSTEM LANDS DEFINED HEREON - NE 1/4 AND S 1/2, SECTION 14, T.29N., R.31W., P.M.M.

Surveyor's Note:

IN REVIEWING J.W.N. 534E.S., SECTION SUBDIVISION BOOK 1, PAGE 50 OF CERTIFIED CORNER RECORDS, A PROCEDURAL ERROR IN ESTABLISHING THE N 1/4 CORNER POSITION WAS DISCOVERED. ALSO THE C 1/4 CORNER WAS FOUND TO BE OUT OF ACCEPTABLE POSITIONAL TOLERANCE. I DETERMINED THE C 1/4 POSITION BY CALCULATION OF THE INTERSECTION OF OPPOSITE 1/4 CORNERS.

Survey Method:

THIS SURVEY WAS ACCOMPLISHED WITH A THEODOLITE-EDM TRAVERSE, NOVEMBER 1984, BY RONALD A. PEARSON, U.S.F.S.

Basis of Bearing:

SOLAR OBSERVATION.

Certificate of Examining Land Surveyor:

APPROVED THIS 11th DAY OF Feb 1985, A.D.

John D. Johnston
EXAMINING LAND SURVEYOR 4232 S
REGISTRATION NO.

APPROVED *R.W. Lindsey*
CHAIRMAN, LINCOLN COUNTY COMMISSIONERS

Certificate of Clerk & Recorder:

STATE OF MONTANA, COUNTY OF LINCOLN, FILED THIS

13th DAY OF February 1985 A.D.

AT 11:10 P. CLOCK A.M.

Janet L. J. Siegel BY *Betty Lee*
COUNTY CLERK RECORDER DEPUTY

Certificate of Survey No. 1367