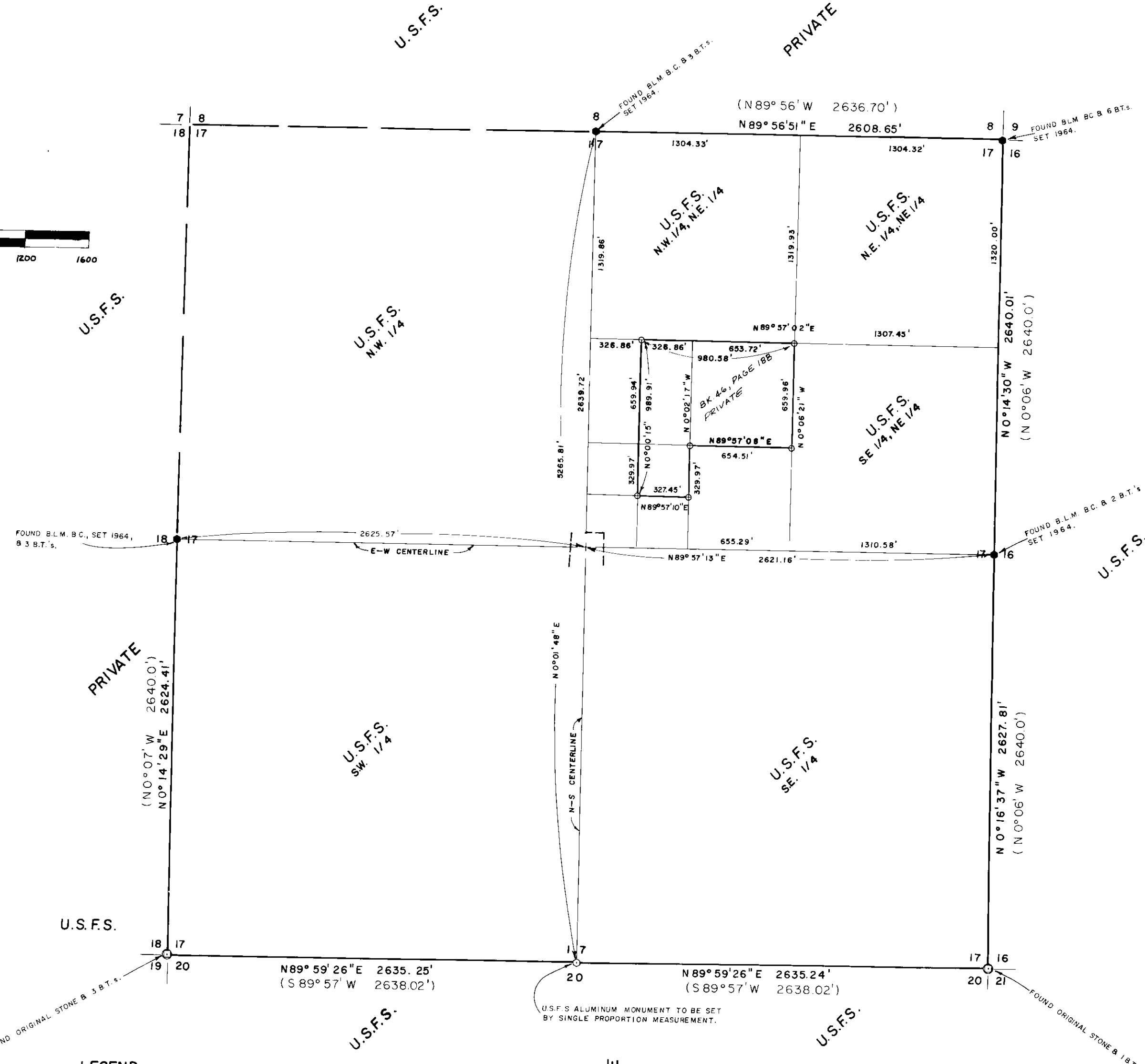
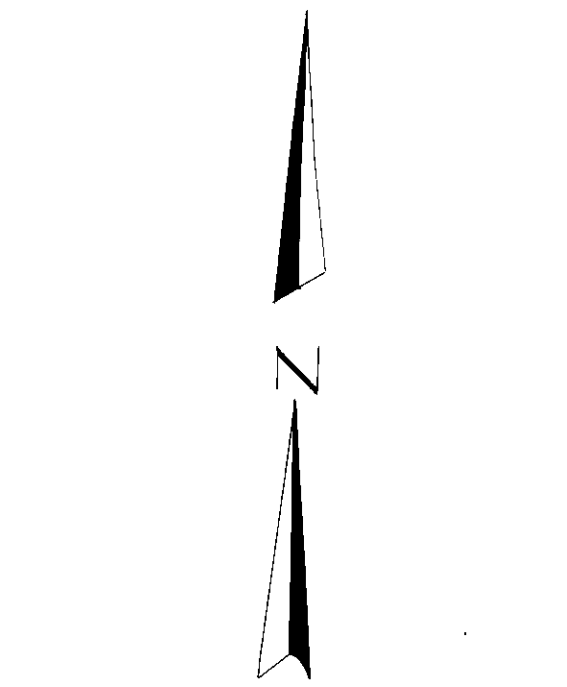


# CERTIFICATE OF SURVEY

SECTION 17, T.26N., R.29W., M.P.M.



**PURPOSE OF SURVEY**  
 The purpose of this survey is to retrace the exterior boundary in order to break down the subdivisional parts in the Northeast one-quarter of Section 17, Township 26 North, Range 29 West, P.M.M., distinguishing between U.S.F.S. and private lands, and no division of land is hereby created.

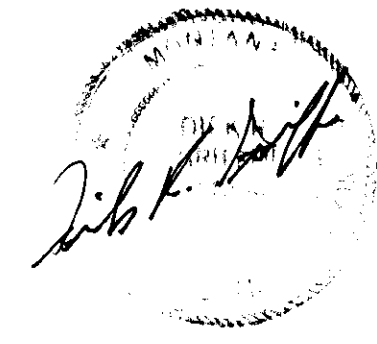
**BASIS OF BEARING**  
 Bearings were based upon Solar Observations made October 4, 1983.

**NOTE**  
 This survey was completed utilizing a Wild T-1 and T-16 theodolite and a K & E Autoranger S distancemeter and conventional methods of cadastral surveying in attaining an accuracy exceeding Class 1-A standards. Field calculations were made using an HP-41CV. Office calculations were made using an HP-41CV and HP-9815S.

**HISTORY**  
 The subdivisions of said township was completed in August-November, 1903 by Alice & Triquet. B.L.M. monumentation was done in 1964.

**LAND SURVEYORS CERTIFICATE**  
 I, hereby certify that I am a Registered Land Surveyor in the State of Montana, that this certificate is a true representation of a survey made under my supervision at the request of the USDA, FOREST SERVICE, between October 1 and November 15, 1983, in accordance with the Montana Code Annotated (Section 76-3-101 thru 76-3-614, 1979) and the Lincoln County regulation adopted pursuant thereto.

*Dick R. Griffin*  
 DICK R. GRIFFIN MONTANA REGISTRATION NO. 7320LS



**LEGEND**

- ⊙ FOUND STONE, SET STANDARD U.S.F.S. ALUMINUM MONUMENT
- FOUND B.L.M. BRASS CAP, STANDARD 2 1/2" IRON POST
- SET STANDARD U.S.F.S. ALUMINUM MONUMENT 3" DIA. X 30" POST, 3 1/2" CAP
- BOUNDARY LINE BETWEEN U.S.F.S. & PRIVATE PROPERTY WITHIN SUBDIVISIONAL BOUNDARY OF SECTION 17. AT CORNERS SET 5/8" X 24" ALUMINUM POST, 3 1/2" CAP STAMPED RLS 7320S
- ( ) GENERAL LAND OFFICE RECORD

1/4	SEC.	TWP.	RNG.
X	17	26N.	29W.
LINCOLN COUNTY PRINCIPAL MERIDIAN, MONTANA			

DECEMBER, 1983

CONTRACT NO. 53-03JI-3-0117, SILVER BUTTE  
 PREPARED BY: D.R. GRIFFIN & ASSOCIATES, ROCK SPRINGS, WYO.

APPROVED: *[Signature]* Examining Land Surveyor  
 Date: 10/22/84 Registration No. 2974-S  
 APPROVED: *[Signature]* Chairman Board of Commissioners  
 ATTESTED: *[Signature]* County Clerk and Recorder  
 Dated this 24 day of Oct., 1984.

STATE OF MONTANA COUNTY OF LINCOLN  
 Filed on this 25<sup>th</sup> day of Oct., 1984  
 at 1:35 o'clock P.M.  
*[Signature]* County Clerk and Recorder  
 by *[Signature]* Deputy

CERTIFICATE OF SURVEY No. 1328