

CERTIFICATE OF SURVEY*IN THE SE 1/4 OF SECTION 11 AND IN THE SW 1/4 OF SECTION 12, TWP. 32 N., R. 34 W., P.M.M.**IRVIN DINNING TRACTS OVER 20 ACRES JUNE, 1984*DESCRIPTION TRACT 1

An irregular tract of land near Troy, in Lincoln County, Montana, lying wholly within the Southeast quarter of Section 11 and the Southwest quarter of Section 12, Township 32 North, Range 34 West, P.M.M., containing 20.000 acres, more or less, and more particularly described as follows:

Beginning at the brass capped monument marking the Southwest corner of said Section 12 (also the Southeast corner of said Section 11); thence, along the South line of said Section 12, S 89°36'52"E a total of 332.53 feet to a point on the mid-channel of O'Brien Creek, from which a 5/8 inch capped steel pin stamped J.H.N. 4661S (hereinafter referred to as "a 5/8 inch pin") set as a witness corner bears N 89°36'52"W 103.07 feet; thence, along the thread of said creek, upstream, the following eleven courses: N 6°E 142.75 feet; thence, N 9°W 63.0 feet; thence, N 22°E 70.0 feet; thence, N 2°E 143.0 feet; thence, N 54°W 166.0 feet; thence, N 10°W 87.0 feet; thence, N 22°E 48.0 feet; thence, N 70°E 66.0 feet; thence, N 35°E 100.0 feet; thence, N 13°W 114.0 feet; thence, N 35°49'27"E 39.38 feet to a point from which a 5/8 inch pin set as a witness corner bears N 89°46'41"W 59.37 feet; thence, leaving said creek, N 89°46'41"W a total of 1009.37 feet to a 5/8 inch pin; thence, S 0°35'34"W 888.48 feet to a 5/8 inch pin on the South line of said Section 11; thence, along said South line, S 89°57'24"E 664.39 feet to the point of beginning.

Including a thirty foot wide easement for access and utilities, containing 1.646 acres, more or less, approximately as shown hereon.

DESCRIPTION TRACT 2

An irregular tract of land near Troy, in Lincoln County, Montana, lying wholly within the Southeast quarter of Section 11 and the Southwest quarter of Section 12, Township 32 North, Range 34 West, P.M.M., containing 20.000 acres, more or less, and more particularly described as follows:

Beginning at the N-S 1/64 corner on the West line of said Section 12, from which the West quarter corner of said Section 12 bears N 0°35'34"E 665.27 feet; thence, along said West line, S 0°35'34"W 665.27 feet to a 5/8 inch capped steel pin stamped J.H.N. 4661S (hereinafter referred to as "a 5/8 inch pin"); thence, leaving said West line, N 89°57'24"W 664.39 feet to a 5/8 inch pin; thence, S 0°35'34"W 442.06 feet to a 5/8 inch pin; thence, S 89°46'41"E a total of 1009.37 feet to a point on the mid-channel of O'Brien Creek, from which a 5/8 inch pin set as a witness corner bears N 89°46'41"W 59.37 feet; thence, along the thread of said creek, upstream, the following nine courses: S 88°E 49.0 feet; thence, S 57°E 66.0 feet; thence, N 68°E 167.0 feet; thence, N 29°E 238.0 feet; thence, N 4°E 49.0 feet; thence, N 26°W 41.0 feet; thence, N 18°E 33.0 feet; thence, N 66°E 61.0 feet; thence, N 11°E 86.69 feet to a point, from which a 5/8 inch pin set as a witness corner bears N 50°01'23"W 44.06 feet; thence, leaving said creek, N 50°01'23"W a total of 1012.62 feet to the point of beginning.

Including a thirty foot wide easement for access and utilities, containing 0.820 acre, more or less, located approximately as shown hereon.

Subject to a thirty foot wide easement for access and utilities, containing 0.826 acre, more or less, located approximately as shown hereon.

Also subject to a sixty foot wide public easement, the Kilbrennan Lake Road (per Transcribed Road Petition No. 85), containing 0.540 acre, more or less, located approximately as shown hereon.

DESCRIPTION TRACT 3

An irregular tract of land near Troy, in Lincoln County, Montana, lying wholly within the Southwest quarter of Section 12, Township 32 North, Range 34 West, P.M.M., containing 20.964 acres, more or less, and more particularly described as follows:

Beginning at the N-S 1/64 corner on the West line of said Section 12, from which the brass capped monument marking the West quarter corner of said Section 12 bears N 0°35'34"E 665.27 feet; thence, S 50°01'23"E a total of 1012.62 feet to a point on the mid-channel of O'Brien Creek, from which a 5/8 inch capped steel pin stamped J.H.N. 4661S (hereinafter referred to as "a 5/8 inch pin") set as a witness corner bears N 50°01'23"W 44.06 feet; thence, along the thread of said creek, upstream, the following eight courses: N 11°E 56.31 feet; thence, N 8°W 136.0 feet; thence, N 38°E 57.0 feet; thence, N 68°E 48.0 feet; thence, N 87°E 250.0 feet; thence, S 67°E 71.0 feet; thence, S 81°E 61.0 feet; thence, N 71°E 109.88 feet to a point on the West one-sixteenth (W 1/16) line of said Section 12, from which a 5/8 inch pin set as a witness corner bears N 0°25'01"E 60.25 feet; thence, along said W 1/16 line, N 0°25'01"E a total of 1047.86 feet to a 5/8 inch pin marking the Center-West one-sixteenth (CW 1/16) corner of said Section 12; thence, along the East/West center-of-section line, N 89°50'47"W 663.64 feet to a point, from which an aluminum capped monument bears N 75°06'W 2.3 feet; thence, S 0°30'18"W 665.94 feet to a point, from which an aluminum capped monument bears N 64°15'W 1.7 feet; thence, N 89°47'17"W 664.67 feet to the point of beginning.

Subject to a thirty foot wide easement for access and utilities, containing 0.820 acre, more or less, located approximately as shown hereon.

Also subject to a sixty foot wide public easement, the Kilbrennan Lake Road (per Transcribed Road Petition No. 85), containing 1.077 acre, more or less, located approximately as shown hereon.

DESCRIPTION TRACT 4

An irregular tract of land near Troy, in Lincoln County, Montana, lying wholly within the Southwest quarter of Section 12, Township 32 North, Range 34 West, P.M.M., containing 20.389 acres, more or less, and more particularly described as follows:

Beginning at the West-West one-sixty fourth (W-W 1/64) corner on the South line of said Section 12, from which the brass capped monument marking the Southwest corner of said Section 12 bears N 89°36'52"W 667.72 feet; thence, along the South line of said Section 12, N 89°36'52"W a total of 335.19 feet to a point on the mid-channel of O'Brien Creek, from which a 5/8 inch capped steel pin stamped J.H.N. 4661S (hereinafter referred to as "a 5/8 inch pin") set as a witness corner bears S 89°36'52"E 84.50 feet; thence, along the thread of said creek, upstream, the following twenty seven courses: N 6°E 142.75 feet; thence, N 9°W 63.0 feet; thence, N 22°E 70.0 feet; thence, N 2°E 143.0 feet; thence, N 54°W 166.0 feet; thence, N 10°W 87.0 feet; thence, N 22°E 48.0 feet; thence, N 70°E 66.0 feet; thence, N 35°E 100.0 feet; thence, N 13°W 114.0 feet; thence, N 35°49'27"E 39.38 feet; thence, S 88°E 49.0 feet; thence, S 57°E 66.0 feet; thence, N 68°E 167.0 feet; thence, N 29°E 238.0 feet; thence, N 4°E 49.0 feet; thence, N 26°W 41.0 feet; thence, N 18°E 33.0 feet; thence, N 66°E 61.0 feet; thence, N 11°E a total of 143.00 feet; thence, N 8°W 136.0 feet; thence, N 38°E 57.0 feet; thence, N 68°E 48.0 feet; thence, N 87°E 250.00 feet; thence, S 67°E 71.0 feet; thence, S 81°E 61.0 feet; thence, N 71°E 109.88 feet to a point on the West one-sixteenth (W 1/16) line of said Section 12; from which a 5/8 inch pin set as a witness corner bears S 0°25'01"W 35.80 feet; thence, along said W 1/16 line, S 0°25'01"W a total of 951.96 feet to a 5/8 inch pin; thence, N 89°40'20"W 666.70 feet to a 5/8 inch pin; thence, S 0°30'18"W 665.94 feet to the point of beginning.

Including a thirty foot wide easement for access and utilities, containing 0.820 acre, more or less, located approximately as shown hereon.

John H. Dinning

PURPOSE: TRACTS OVER 20 ACRES
OWNER: IRVIN DINNING
DATE: JUNE, 1984

LINCOLN COUNTY, MONTANA

CERTIFICATE OF SURVEY

IN THE SE 1/4 OF SECTION 11 AND IN THE SW 1/4 OF SECTION 12, TWP. 32N., R. 34W., P.M.M.

THE PURPOSE OF THIS DIVISION OF LAND IS TO CREATE IRREGULAR PARCELS GREATER THAN TWENTY (20) ACRES IN SIZE, AND THE SUBJECT PARCELS MUST BE SURVEYED PURSUANT TO SECTION 76-3-401, M.C.A.

Jack H. Ninneman 7/10/84 MONTANA REG. NO. 46615
JACK H. NINNEMAN DATE

SURVEYOR'S NOTE

THE BREAKDOWN OF SECTION 12 SHOWN HEREON IS AS SHOWN ON CERTIFICATE OF SURVEY NO. 1083, LINCOLN COUNTY RECORDS, VERIFIED ON THE GROUND ON THIS SURVEY BY APPROPRIATE TIES.

THE BOUNDARIES IN SECTION 11 ARE BY MUTUAL AGREEMENT BETWEEN ST. REGIS LUMBER COMPANY AND IRVIN DINNING.

LEGEND

- ⊕ FOUND MONUMENT AS NOTED
- SET A 3/8" x 24" CAPPED STEEL PIN STAMPED J.H.N. 46615
- () RECORD PER C. OF S. NO. 135
- < > RECORD PER G.L.O.

SHEET 1 OF 2 SHEETS

STATE OF MONTANA COUNTY OF LINCOLN

Filed on this 11th day of July, 1984

at 12:05 o'clock P.M.
Janet B. J. Seigel
County Clerk and Recorder

by Sherry L. Hawks
Deputy

APPROVED: Jack H. Ninneman
Examining Land Surveyor

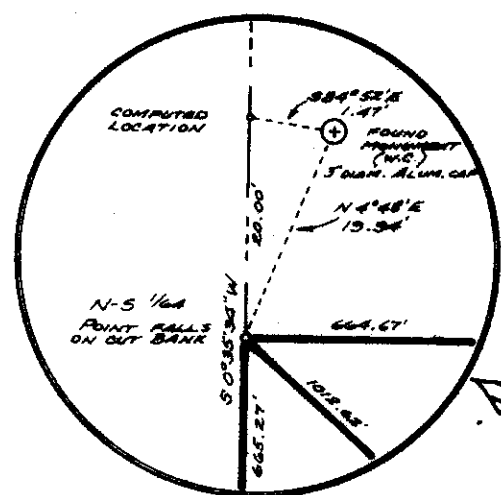
Date 7/10/1984 Registration No. 4974-S

APPROVED: Jim R. Mery
Chairman Board of Commissioners

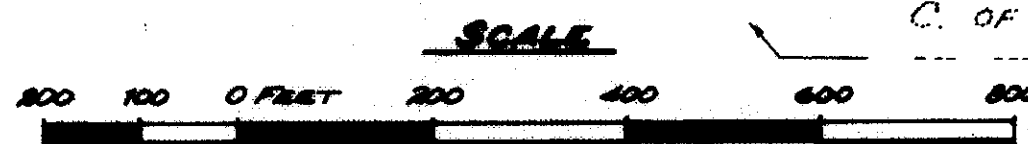
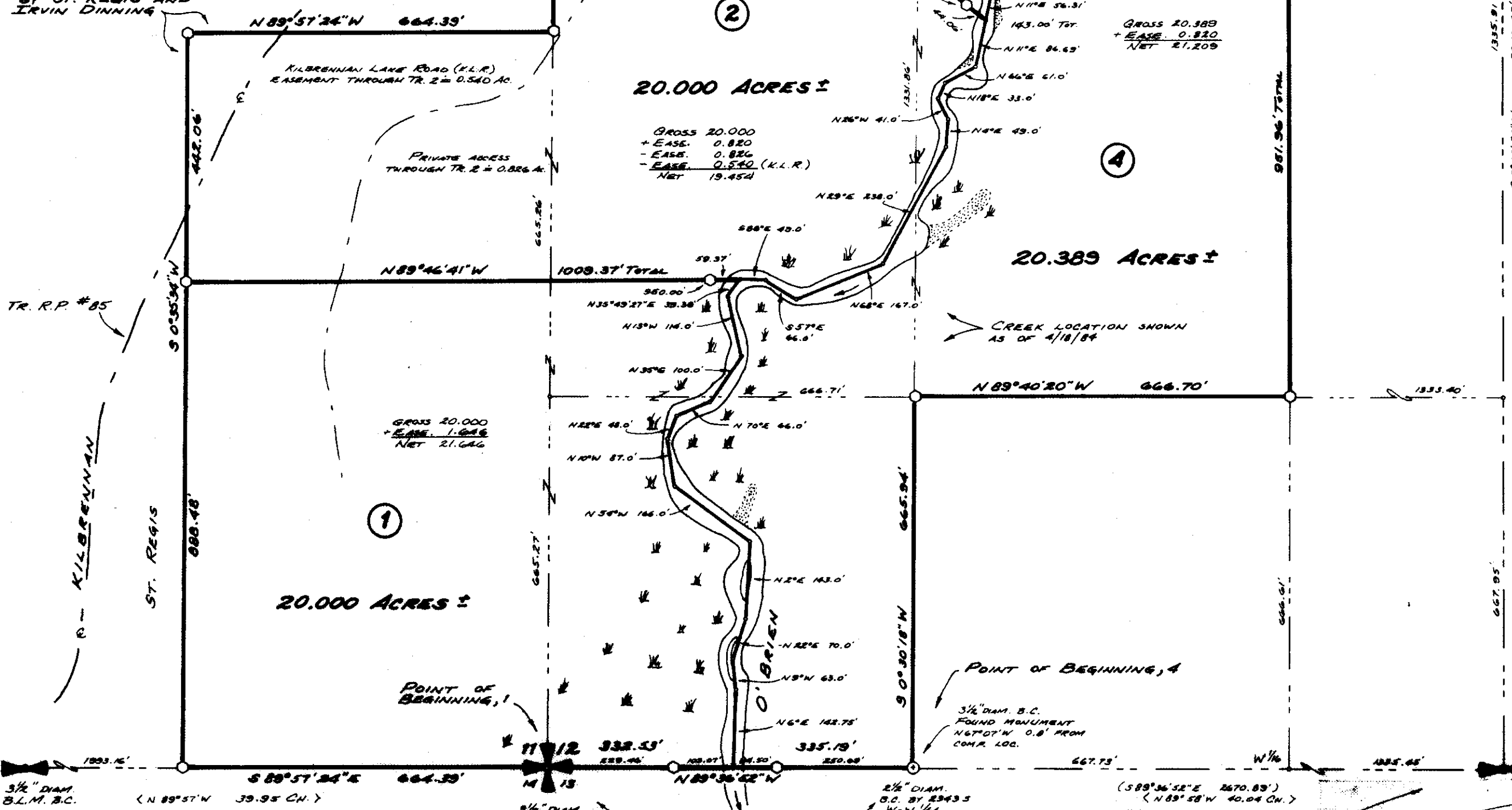
ATTESTED: Janet B. J. Seigel
County Clerk and Recorder

DETAIL

NOT TO SCALE



BOUNDARY AGREED UPON BY ST. REGIS AND IRVIN DINNING



Ninneman Engineering Troy, Montana