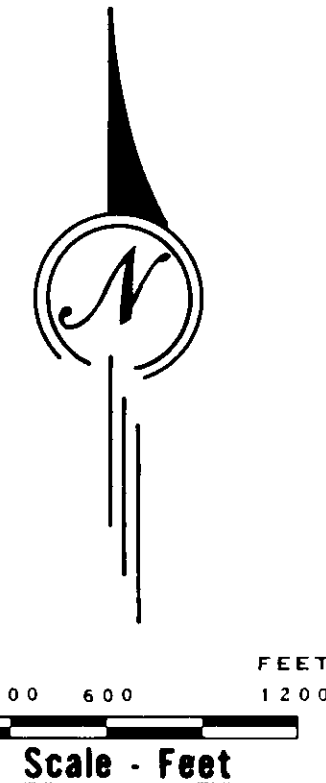
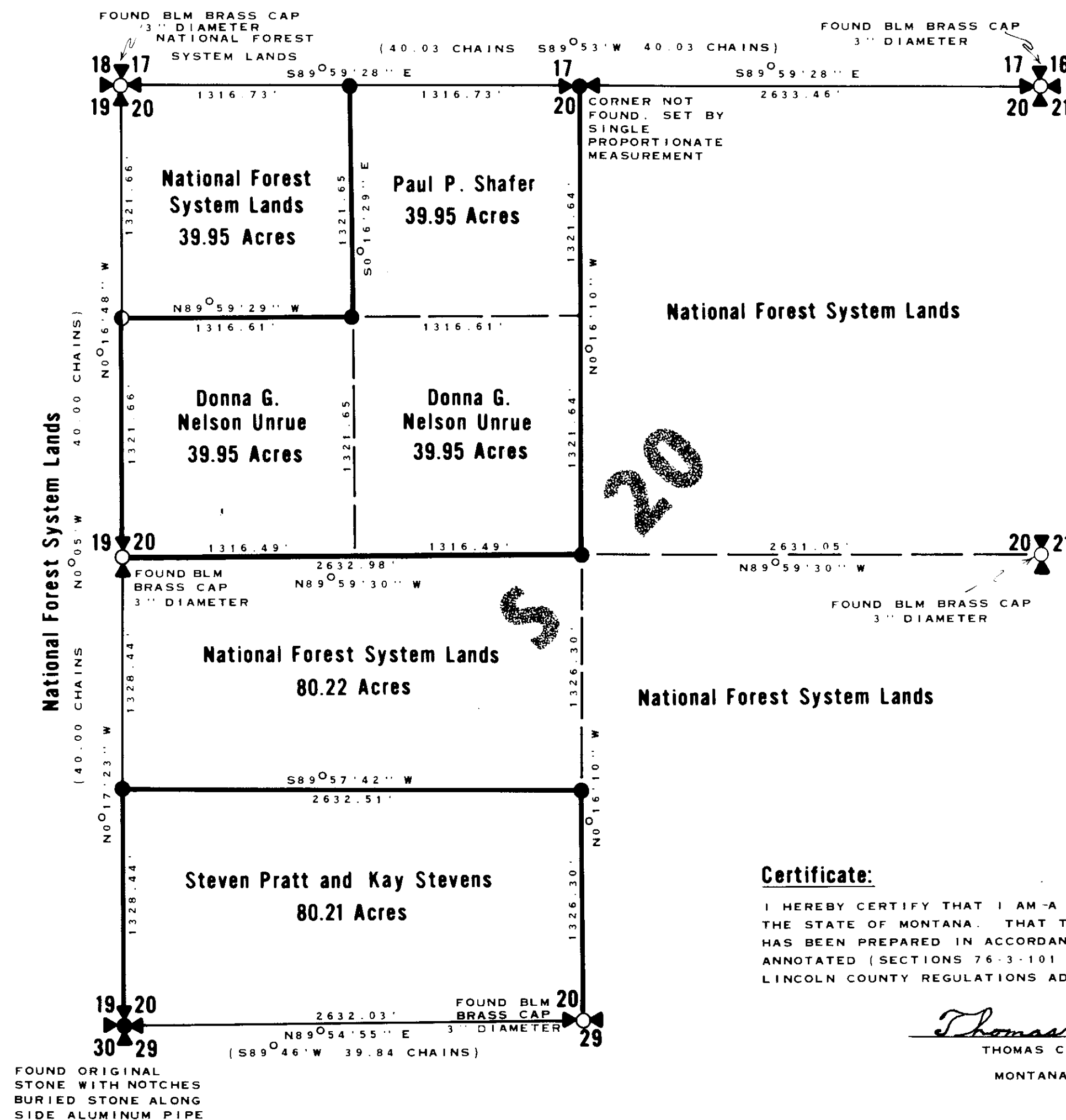


Certificate of Survey

Partial Retracement and Subdivision Section 20, T.34N., R.26W., P.M.M.

Lincoln County, Montana
February 1984



Legend

- SECTION CORNER SET THIS SURVEY, 2-1/2" X 30" ALUMINUM PIPE WITH 3-1/4" ALUMINUM CAP MARKED 5612S.
- 1/4 SECTION CORNER SET THIS SURVEY, 2-1/2" X 30" ALUMINUM PIPE WITH 3-1/4" ALUMINUM CAP MARKED 5612S.
- SECTION CORNER MONUMENTED AS NOTED
- 1/4 SECTION CORNER MONUMENTED AS NOTED
- CORNER MONUMENT SET THIS SURVEY, 2-1/2" X 30" ALUMINUM PIPE WITH 3-1/4" ALUMINUM CAP MARKED 5612S.
- 3/4" ALUMINUM ROCK CAP MARKED 5612S SET IN BOULDER
- ORIGINAL G.L.O. RECORD
- POSTED LINE

History:

ORIGINAL G.L.O. SURVEY COMPLETED AUGUST 21, 1894. BLM REMONUMENTATION 1959, 1960, 1961.

Purpose of Survey:

THE PURPOSE OF THIS SURVEY IS TO RETRACE AND MARK THE BOUNDARIES OF EXISTING RECORD PARCELS, DISTINGUISHING BETWEEN NATIONAL FOREST SYSTEM LANDS AND PRIVATE LANDS, THEREFORE NO DIVISION OF LAND IS CREATED.

Notes:

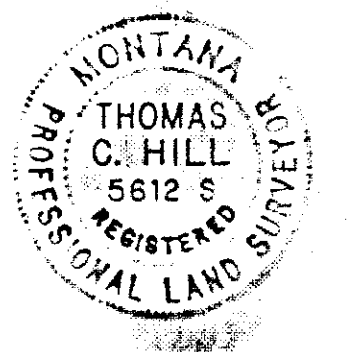
BEARINGS WERE BASED ON A SOLAR OBSERVATION. THIS SURVEY WAS COMPLETED BY UTILIZING CONVENTIONAL TRAVERSE AND INTERSECTION METHODS. FOR FURTHER CORNER INFORMATION REFER TO THE CORNER RECORDATION FORMS ON FILE IN THE CLERK AND RECORDERS OFFICE, LINCOLN COUNTY COURTHOUSE, LIBBY, MONTANA.

Legal Description:

NATIONAL FOREST SYSTEM LANDS DEFINED HEREON - THE NW 1/4 NW 1/4 AND THE N 1/2 SW 1/4 OF SECTION 20, T.34N., R.26W., P.M.M.

Basis of Bearing:

BEARINGS WERE BASED ON A SOLAR OBSERVATION.



Certificate of Examining Land Surveyor:

APPROVED THIS 11th DAY OF JUNE 1984, A.D.

EXAMINING LAND SURVEYOR REGISTRATION NO. 1974-S

APPROVED: JIM R. MOORE
CHAIRMAN, LINCOLN COUNTY COMMISSIONERS

Certificate of Clerk and Recorder:

STATE OF MONTANA, COUNTY OF LINCOLN, FILED THIS 14th DAY OF JUNE

1984 A.D. AT 3:10 O'CLOCK P.M.
COUNTY CLERK RECORDER BY SHERRY L. HAWKS
DEPUTY

Certificate:

I HEREBY CERTIFY THAT I AM A REGISTERED LAND SURVEYOR IN THE STATE OF MONTANA. THAT THE SURVEY SHOWN ON THIS PLAT HAS BEEN PREPARED IN ACCORDANCE WITH THE MONTANA CODE ANNOTATED (SECTIONS 76-3-101 THROUGH 76-6-613) AND THE LINCOLN COUNTY REGULATIONS ADOPTED PURSUANT THERETO.

THOMAS C. HILL 6-5-84
THOMAS C. HILL DATE
MONTANA REGISTRATION NO. 5612S

Certificate of Survey No. 1272