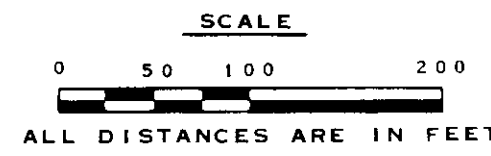


CERTIFICATE OF SURVEY

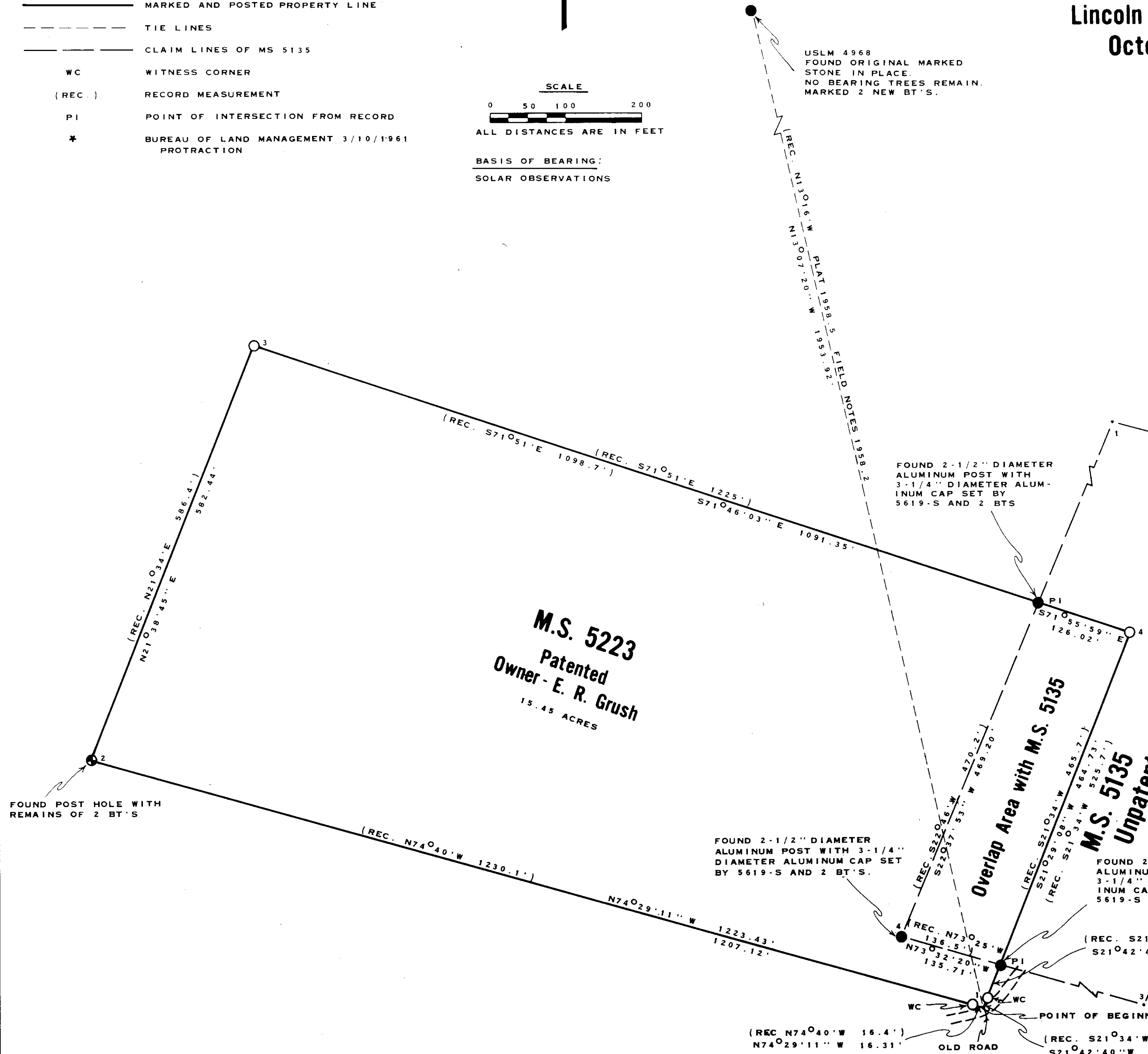
RETRACEMENT AND DEPENDENT RESURVEY OF M.S. 5223 - GREAT NORTHERN LODGE LOCATED IN UNSURVEYED T.34N., R.33W., P.M.M.

Protracted Section 17*
Lincoln County, Montana
October 20, 1983

- LEGEND**
- FOUND CORNERS AS NOTED
 - ⊙ RECOVERED CORNER, REMONUMENTED WITH A 2-1/2" DIAMETER ALUMINUM POST WITH 3-1/4" DIAMETER ALUMINUM CAP.
 - CALCULATED CORNER POSITION MONUMENT NOT SET
 - CORNER REESTABLISHED THIS SURVEY. SET 2-1/2" DIAMETER ALUMINUM POST WITH 3-1/4" DIAMETER ALUMINUM CAP AND 2 BEARING TREES
- MARKED AND POSTED PROPERTY LINE
- TIE LINES
- CLAIM LINES OF MS 5135
- WC WITNESS CORNER
- (REC.) RECORD MEASUREMENT
- PI POINT OF INTERSECTION FROM RECORD
- * BUREAU OF LAND MANAGEMENT 3/10/1961 PROTRACTATION



BASIS OF BEARING:
SOLAR OBSERVATIONS



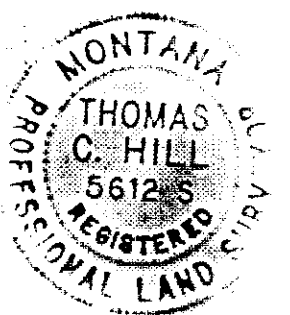
PURPOSE OF SURVEY
TO RESURVEY MS 5223, TO IDENTIFY ITS TITLE LINES BETWEEN NATIONAL FOREST SYSTEM LANDS AND PRIVATE LANDS. NO NEW DIVISIONS OF LAND CREATED.

LEGAL DESCRIPTION OF PRIVATE OWNERSHIP
A TRACT OF LAND PATENTED AS GREAT NORTHERN LODGE MS5223, LOCATED OFF OF USLM 4968 WHICH LIES IN THE YAAK MINING DISTRICT AND WITHIN UNSURVEYED T34N. R33W. PROTRACTED SECTION 17. MY RETRACEMENT IS AS FOLLOWS - FROM USLM 4968 S13°07'20" W. 1953.92 FEET TO CORNER 1 AND TRUE POINT OF BEGINNING. THENCE N74°29'11" W. 1223.43 FEET TO CORNER 2. THENCE N21°38'45" E. 582.44 FEET TO CORNER 3. THENCE S71°05'1" E. 1091.35 FEET TO AN INTERSECTION POINT WITH LINE 4-1 OF MS 5135. THENCE S71°05'59" E. 126.02 FEET TO CORNER 4. THENCE S21°29'08" W. 464.73 FEET TO AN INTERSECTION POINT WITH LINE 3-4 OF MS 5135. THENCE S21°42'40" W. 59.86 FEET TO POINT OF BEGINNING

HISTORY OF SURVEY
USLM 4968 ESTABLISHED BY ABRAM L. JAQUETH IN OCTOBER, 1897. IN THE MS 4968 SURVEY. MS 5223 WAS SURVEYED BY ABRAM L. JAQUETH IN OCTOBER, 1897. MS 5135 WAS SURVEYED BY GALEN H. WHEELER IN JUNE 1897. REMONUMENTATION OF CERTAIN CORNERS OF MS 5135 WAS DONE BY 5619-S IN 1983.

PROCEDURE
SURVEY COMMENCED USING A TOPCON TOTAL STATION TO RUN A RANDOM TRAVERSE TYING IN ALL KNOWN CORNERS. USING THE GRANT BOUNDARY METHOD, CORNER 2 WAS RECOVERED AND REMONUMENTED FROM ORIGINAL EVIDENCE, THEN TIED INTO THE RANDOM TRAVERSE. IN RECALCULATION BY GRANT BOUNDARY METHOD, NEW CORNER POSITIONS FOR CORNERS 1, 3, AND 4 WERE DETERMINED. NO EVIDENCE WAS RECOVERED PROVING THE LOCATION OF THESE CORNERS. I REESTABLISHED THESE CORNERS AT COMPUTED POSITIONS. THE POSITIONS AS DETERMINED BY GRANT BOUNDARY ADJUSTMENT BEST FIT THE ORIGINAL CLAIM CONFIGURATION AND CALLS TO RECOVERED EVIDENCE.

CERTIFICATE
I HEREBY CERTIFY THAT I AM A REGISTERED LAND SURVEYOR IN THE STATE OF MONTANA, THAT THE SURVEY SHOWN ON THIS PLAT HAS BEEN PREPARED IN ACCORDANCE WITH THE MONTANA CODE ANNOTATED (SECTIONS 76-3-101 THROUGH 76-6-613) AND THE LINCOLN COUNTY REGULATIONS ADOPTED PURSUANT THERETO.



Thomas C Hill 4-5-84
THOMAS C. HILL MONTANA REGISTRATION NO. 56125

CERTIFICATE OF EXAMINING LAND SURVEYOR
APPROVED THIS 5th DAY OF APRIL 1983, A.D.
Thomas C Hill 4974-S
EXAMINING LAND SURVEYOR REGISTRATION NO.
APPROVED: *Jim R. Mory*
CHAIRMAN, LINCOLN COUNTY COMMISSIONERS

CERTIFICATE OF CLERK AND RECORDER
STATE OF MONTANA, COUNTY OF LINCOLN
FILED THIS 11th DAY OF APRIL 1984 A.D.
AT 3:15 O'CLOCK P.M.
Janet L. High BY *Scott Bell*
COUNTY CLERK RECORDER DEPUTY
CERTIFICATE OF SURVEY NUMBER 1250