

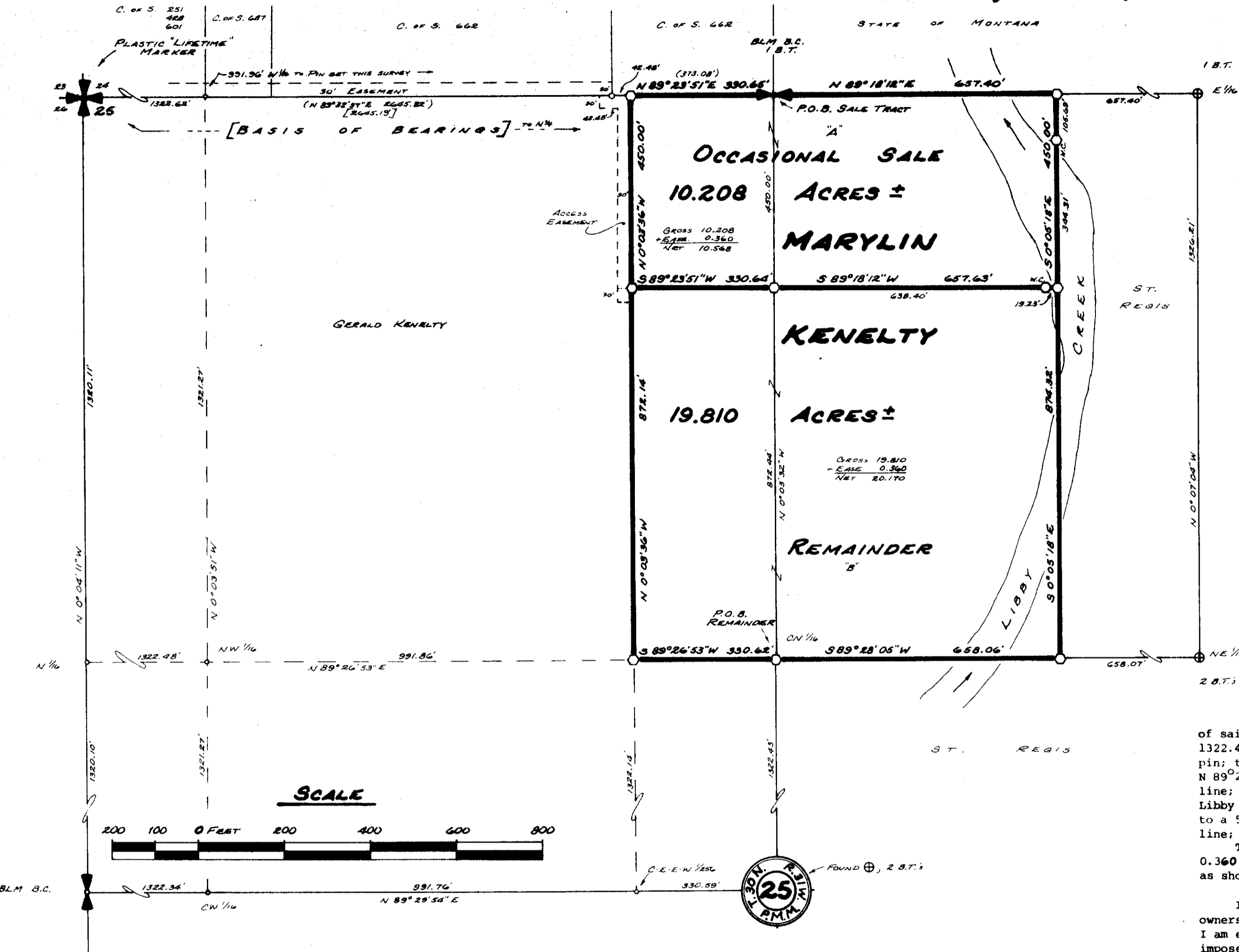
LINCOLN COUNTY, MONTANA

JULY, 1983

# CERTIFICATE OF SURVEY

IN THE N 1/2 OF SEC. 25, T. 30N., R. 31W., P.M.M.

VICINITY MAP  
1" = 1000'



### DESCRIPTION OCCASIONAL SALE - 10.208 ACRES ±

A nearly rectangular tract of land near Libby, in Lincoln County, Montana, lying wholly within the north 1/2 of Section 25, Twp. 30N., R. 31W., P.M.M., containing 10.208 acres, more or less, and more particularly described as follows:

Beginning at the HLM brass capped monument marking the North 1/4 corner of said Section 25; thence, along the north line of said Section 25, N 89° 18' 12" E 657.40 feet to a 5/8 inch capped steel pin stamped JHN 4661S (hereinafter referred to as "a 5/8 inch pin"); thence, leaving said north line, S 0° 05' 18" E 105.69 feet to a 5/8 inch pin set as a witness corner on the northeasterly bank of Libby Creek; thence, continuing S 0° 05' 18" E 344.31 feet to a 5/8 inch pin; thence, S 89° 18' 12" W 19.23 feet to a 5/8 inch pin set as a witness corner on the westerly bank of said creek; thence, continuing S 89° 18' 12" W 638.40 feet to a 5/8 inch pin on the north/south center-of-section line; thence, S 89° 23' 51" W 330.64 feet to a 5/8 inch pin; thence, N 0° 03' 36" W 450.00 feet to a 5/8 inch pin on the north line of said Section 25; thence, along said line, N 89° 23' 51" E 330.65 feet to the point of beginning.

Together with a thirty foot wide easement for access and utilities, containing 0.360 acre, more or less, along the west boundary, as shown hereon.

### DESCRIPTION REMAINDER - 5 ACRES ±

A nearly rectangular tract of land near Libby, in Lincoln County, Montana, lying wholly within the north 1/2 of Section 25, Twp. 30N., R. 31W., P.M.M., containing 19.810 acres, more or less, and more particularly described as follows:

Beginning at a 5/8 inch capped steel pin stamped JHN 4661S (hereinafter referred to as "a 5/8 inch pin") marking the CN 1/16 corner of said Section 25, from which the Center 1/4 of said Section 25 bears S 0° 03' 32" E 1322.43 feet; thence, along the N 1/16 line, S 89° 26' 53" W 330.62 feet to a 5/8 inch pin; thence, leaving said line N 0° 03' 36" W 872.14 feet to a 5/8 inch pin; thence, N 89° 23' 51" E 330.64 feet to a 5/8 inch pin on the north/south center-of-section line; thence, N 89° 18' 12" E 638.40 feet to a 5/8 inch pin set on the west bank of Libby Creek as a witness monument; thence, continuing N 89° 18' 12" E 19.23 feet to a 5/8 inch pin; thence, S 0° 05' 18" E 874.32 feet to a 5/8 inch pin on the N 1/16 line; thence, along said line, S 89° 28' 05" W 658.06 feet to the point of beginning.

Together with a thirty foot wide easement for access and utilities, containing 0.360 acre, more or less, entering the aforesaid tract at the northwest corner, as shown hereon.

### EXEMPTION CERTIFICATE/PURPOSE FOR SURVEY

I hereby certify that the purpose for this division of land is to transfer ownership of the parcel created as an occasional sale, furthermore, I certify that I am entitled to use this exemption in that I am in compliance with all conditions imposed in the use of this exemption; therefore, this division of land is exempt from review as a subdivision pursuant to Section 76-3-207 (b), M.C.A.

Marilyn J. Kenelty 8-15-83  
Marilyn Kenelty Date  
The foregoing certificate was subscribed and sworn to before me this 15 day of August, 1983  
Charles Monnemier, Notary Public Residing at Great Falls, Montana My Commission Expires Feb. 4, 1985

### LEGEND

- 5/8 inch X 24 inch capped steel pin stamped JHN 4661S, set this survey
- 5/8 inch X 24 inch capped steel pin stamped JHN 4661S, set previous survey
- ⊕ Found BLM brass cap
- Computed location, not tied or set
- ( ) Record per C. of S. 662
- [ ] Record per C. of S. 251, 428, 601

NINNEMAN ENGINEERING TROY, MONTANA



APPROVED: *Charles Monnemier*  
Examining Land Surveyor  
Date 8/15/83 Registration No. 4974-S

APPROVED: *John P. Muey*  
Chairman Board of Commissioners

ATTESTED: *Janet B. Siegel*  
County Clerk and Recorder  
Dated this 21st day of September, 1983

STATE OF MONTANA COUNTY OF LINCOLN  
Filed on this 21st day of Sept. 1983  
at 1:25 o'clock P.M.  
*Janet B. Siegel*  
County Clerk and Recorder  
by *Betty Bull*  
Deputy

Certificate of Survey No. 1188