

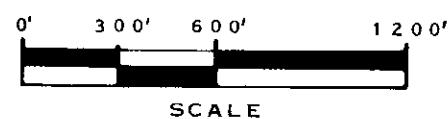
# CERTIFICATE OF SURVEY

## RETRACEMENT AND SUBDIVISION

### Section 29, T.34N., R.25W., P.M.M.

#### Lincoln County, Montana

May 1983



**LEGEND**

- FOUND MONUMENT AS NOTED
- MONUMENTS SET THIS SURVEY, 2-1/2 INCH ALUMINUM PIPE WITH 3-1/2 INCH ALUMINUM CAP MARKED 5612S
- ( ) ORIGINAL G.L.O. CALLS
- POSTED, BRUSHED, AND BLAZED LINE
- RECORD AS PER CERTIFICATE OF SURVEY NO. 1006

**PURPOSE OF SURVEY**

THE PURPOSE OF THIS SURVEY IS TO RETRACE AND MARK THE BOUNDARIES OF EXISTING RECORD PARCELS, DISTINGUISHING BETWEEN NATIONAL FOREST SYSTEM LANDS AND PRIVATE LANDS AND NO DIVISION OF LAND IS HEREBY CREATED.

**HISTORY**

ORIGINAL SURVEY COMPLETED BY FRANK SIZER AND ABRAM JAQUETH, MARCH 8, 1894.  
 REMONUMENTATION BY B.L.M., 1959, 1960.  
 CERTIFICATE OF SURVEY NUMBER 1006 IN SECTION 30 DONE BY MARQUARDT IN 1982.

**NOTES**

BASIS OF BEARING WAS OBTAINED FROM SOLAR OBSERVATION.  
 THIS SURVEY WAS COMPLETED BY UTILIZING CONVENTIONAL TRAVERSE AND INTERSECTION METHODS. FOR FURTHER CORNER INFORMATION REFER TO THE CORNER RECORDATION FORMS ON FILE IN THE CLERK AND RECORDER'S OFFICE, LINCOLN COUNTY COURTHOUSE, LIBBY, MONTANA.

**LEGAL DESCRIPTION OF PRIVATE OWNERSHIP**


THE NW1/4 NW1/4, NW1/4 NW1/4 NE1/4 NW1/4, THE W1/2 SW1/4 NW1/4, THE N1/2 NW1/4 NW1/4 SW1/4, THE S1/2 NW1/4 SW1/4, THE S1/2 SW1/4, THE S1/2 NE1/4 SW1/4, THE S1/2 NW1/4 SE1/4 AND THE N1/2 SW1/4 SE1/4 OF SECTION 29, T.34N., R.25W., P.M.M.

**LEGAL DESCRIPTION OF NATIONAL FOREST SYSTEM LANDS**

THE NE1/4 NW1/4 NE1/4 NW1/4, THE SW1/4 NW1/4 NE1/4 NW1/4, THE SE1/4 NW1/4 NE1/4 NW1/4, THE E1/2 NE1/4 NW1/4, THE NE1/4, THE SW1/4 NE1/4 NW1/4, THE E1/2 SW1/4 NW1/4, THE SE1/4 NW1/4, THE S1/2 NW1/4 NW1/4 SW1/4, THE NE1/4 NW1/4 SW1/4, THE N1/2 NE1/4 SW1/4, THE NE1/4, THE N1/2 NW1/4 SE1/4, THE E1/2 SE1/4 AND THE S1/2 SW1/4 SE1/4 OF SECTION 29, T.34N., R.25W., P.M.M.


**CERTIFICATE**


I HEREBY CERTIFY THAT I AM A REGISTERED LAND SURVEYOR IN THE STATE OF MONTANA, THAT THE SURVEY SHOWN ON THIS PLAT HAS BEEN PREPARED IN ACCORDANCE WITH THE MONTANA CODE ANNOTATED (SECTIONS 76-3-101 THROUGH 76-6-613) AND THE LINCOLN COUNTY REGULATIONS ADOPTED PURSUANT THERETO.

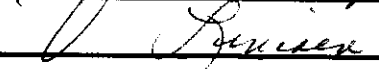
  
 THOMAS C. HILL MONTANA REGISTRATION NO. 5612S

**CERTIFICATE OF EXAMINING LAND SURVEYOR**

APPROVED THIS 24<sup>TH</sup> DAY OF JUNE 1983, A.D.

 EXAMINING LAND SURVEYOR  
 REGISTRATION NO. 46615

APPROVED:  COUNTY COMMISSIONERS



CHAIRMAN:  COUNTY COMMISSIONERS

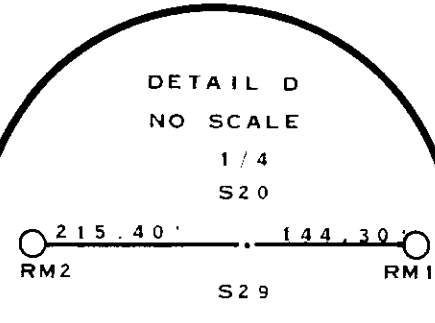
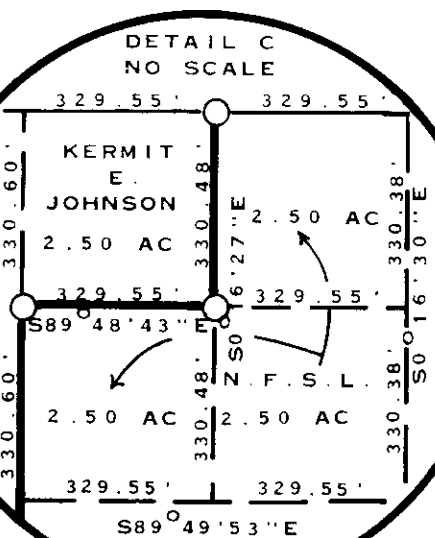
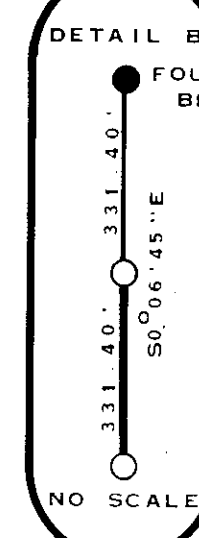
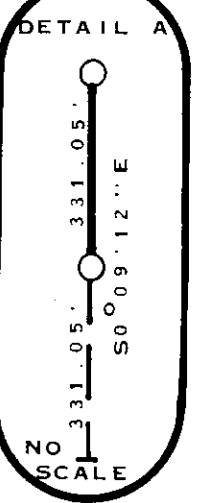
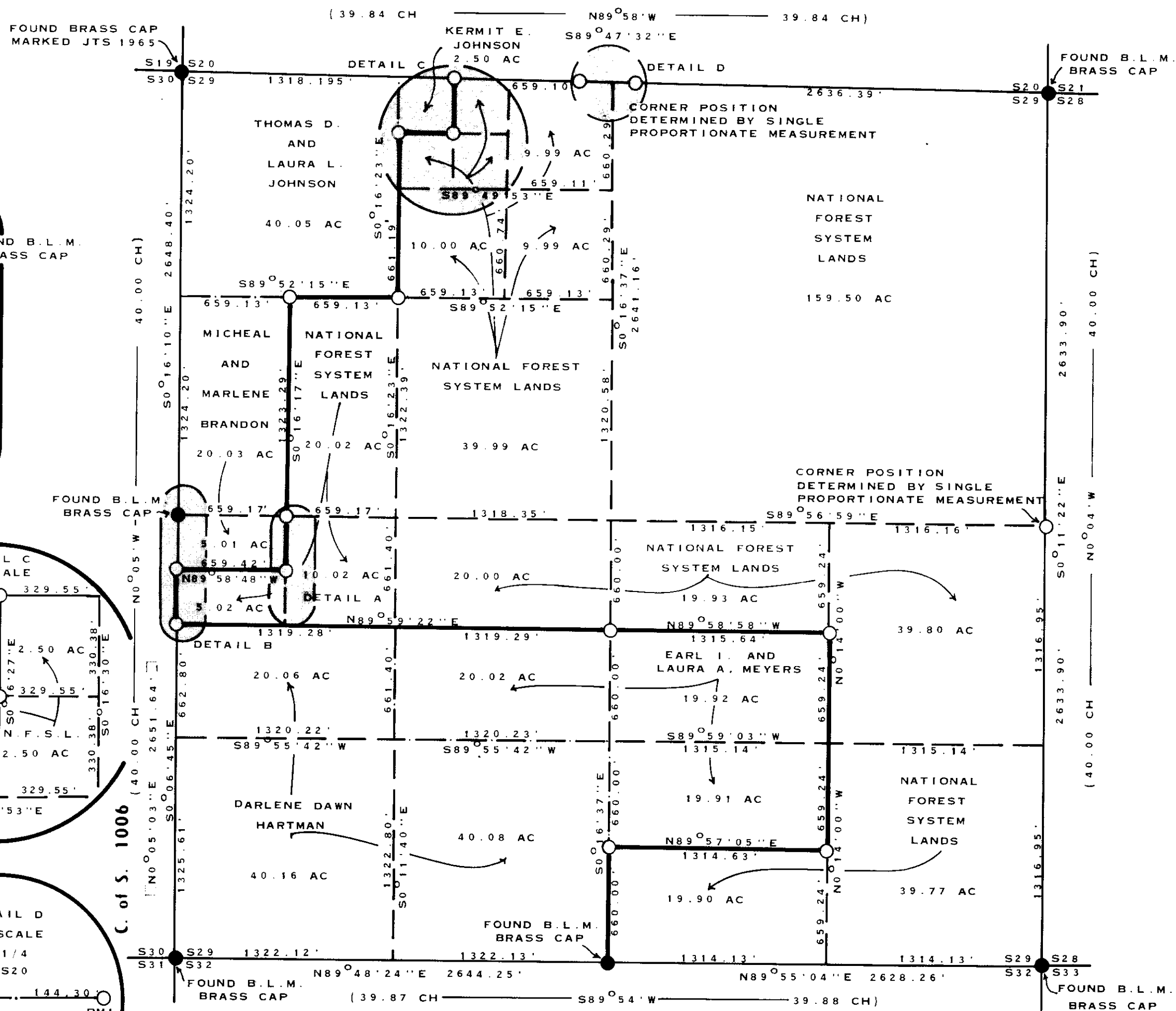
**CERTIFICATE OF CLERK AND RECORDER**

STATE OF MONTANA, COUNTY OF Lincoln FILED

THIS 27<sup>TH</sup> DAY OF July 1983, A.D.

AT 1130 O'CLOCK P. M.

 COUNTY CLERK RECORDER  
 BY  DEPUTY



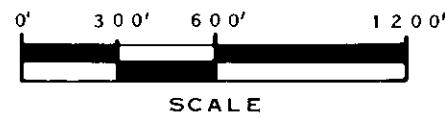
NOTE: 1/4 CORNER POSITION FALLS IN RAILROAD RIGHT-OF-WAY BETWEEN MAIN LINE RAILS. THEREFORE TWO REFERENCE MONUMENTS WERE SET ON SECTION LINE.

1/4 SEC. T. N. R. W.  
29 34 25

CERTIFICATE OF SURVEY NUMBER 1149

# CERTIFICATE OF SURVEY RETRACEMENT AND SUBDIVISION

Section 29, T.34N., R.25W., P.M.M.  
Lincoln County, Montana  
May 1983



- LEGEND**
- FOUND MONUMENT AS NOTED
  - MONUMENTS SET THIS SURVEY, 2-1/2 INCH ALUMINUM PIPE WITH 3-1/2 INCH ALUMINUM CAP MARKED 5612S
  - ( ) ORIGINAL G.L.O. CALLS
  - POSTED, BRUSHED, AND BLAZED LINE
  - [ ] RECORD AS PER CERTIFICATE OF SURVEY NO. 1006

**PURPOSE OF SURVEY**

THE PURPOSE OF THIS SURVEY IS TO RETRACE AND MARK THE BOUNDARIES OF EXISTING RECORD PARCELS, DISTINGUISHING BETWEEN NATIONAL FOREST SYSTEM LANDS AND PRIVATE LANDS AND NO DIVISION OF LAND IS HEREBY CREATED.

**HISTORY**

ORIGINAL SURVEY COMPLETED BY FRANK SIZER AND ABRAM JAQUETH, MARCH 8, 1894.  
REMONUMENTATION BY B.L.M. 1959, 1960.  
CERTIFICATE OF SURVEY NUMBER 1006 IN SECTION 30 DONE BY MARQUARDT IN 1982.

**NOTES**

BASIS OF BEARING WAS OBTAINED FROM SOLAR OBSERVATION.  
THIS SURVEY WAS COMPLETED BY UTILIZING CONVENTIONAL TRAVERSE AND INTERSECTION METHODS. FOR FURTHER CORNER INFORMATION REFER TO THE CORNER RECORDATION FORMS ON FILE IN THE CLERK AND RECORDER'S OFFICE, LINCOLN COUNTY COURTHOUSE, LIBBY, MONTANA.

**LEGAL DESCRIPTION OF PRIVATE OWNERSHIP**

THE NW1/4 NW1/4, NW1/4 NW1/4 NE1/4 NW1/4, THE W1/2 SW1/4 NW1/4, THE N1/2 NW1/4 NW1/4 SW1/4, THE S1/2 NW1/4 SW1/4, THE S1/2 SW1/4, THE S1/2 NE1/4 SW1/4, THE S1/2 NW1/4 SE1/4 AND THE N1/2 SW1/4 SE1/4 OF SECTION 29, T.34N., R.25W., P.M.M.

**LEGAL DESCRIPTION OF NATIONAL FOREST SYSTEM LANDS**

THE NE1/4 NW1/4 NE1/4 NW1/4, THE SW1/4 NW1/4 NE1/4 NW1/4, THE SE1/4 NW1/4 NE1/4 NW1/4, THE E1/2 NE1/4 NW1/4, THE E1/2 SW1/4 NW1/4, THE SE1/4 NW1/4, THE S1/2 NW1/4 NW1/4 SW1/4, THE NE1/4 NW1/4 SW1/4, THE N1/2 NE1/4 SW1/4, THE NE1/4, THE N1/2 NW1/4 SE1/4, THE E1/2 SE1/4 AND THE S1/2 SW1/4 SE1/4 OF SECTION 29, T.34N., R.25W., P.M.M.

**CERTIFICATE**

I HEREBY CERTIFY THAT I AM A REGISTERED LAND SURVEYOR IN THE STATE OF MONTANA, THAT THE SURVEY SHOWN ON THIS PLAT HAS BEEN PREPARED IN ACCORDANCE WITH THE MONTANA CODE ANNOTATED (SECTIONS 76-3-101 THROUGH 76-6-613) AND THE LINCOLN COUNTY REGULATIONS ADOPTED PURSUANT THERETO.

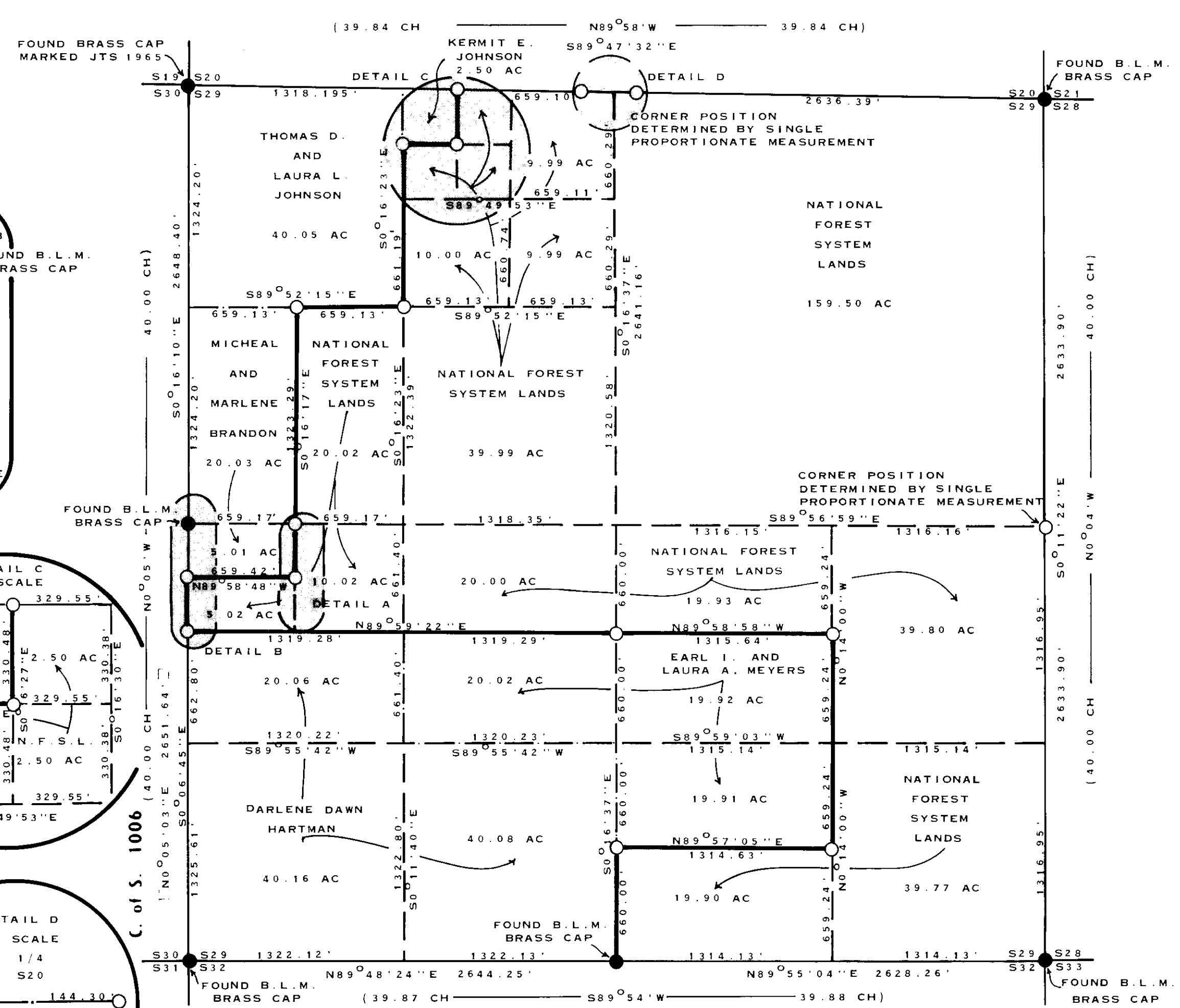
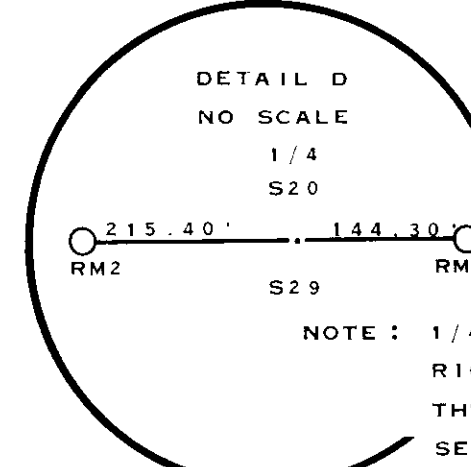
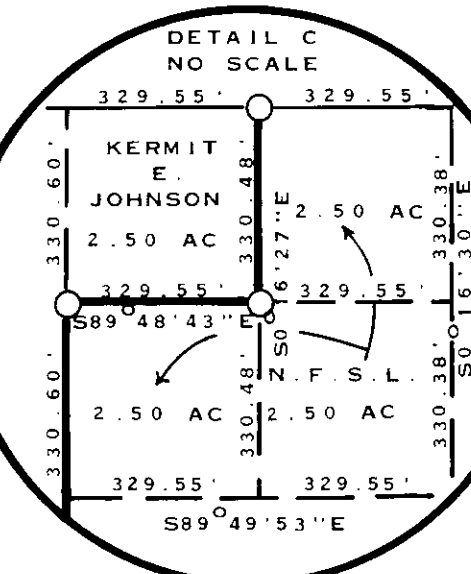
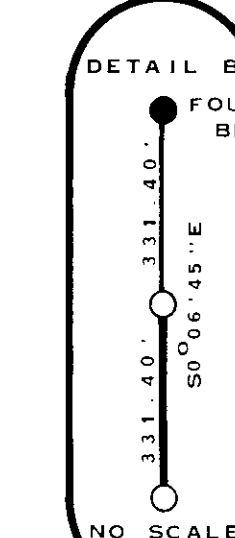
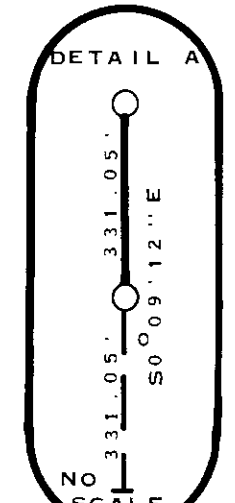
*Thomas C. Hill*  
THOMAS C. HILL MONTANA REGISTRATION NO. 5612S

**CERTIFICATE OF EXAMINING LAND SURVEYOR**

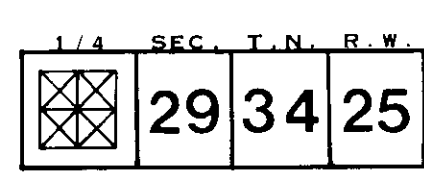
APPROVED THIS 27<sup>th</sup> DAY OF JUNE 1983, A.D.  
*Jack H. Rinaman* 46615  
 EXAMINING LAND SURVEYOR REGISTRATION NO.  
 APPROVED: *Jim R. May*  
 CHAIRMAN, COUNTY COMMISSIONERS

**CERTIFICATE OF CLERK AND RECORDER**

STATE OF MONTANA, COUNTY OF Lincoln FILED  
 THIS 27<sup>th</sup> DAY OF July 1983, A.D.  
 AT 11:30 O'CLOCK P. M.  
*Janet B. J. Siegel* BY *Betty Bee*  
 COUNTY CLERK RECORDER DEPUTY



NOTE: 1/4 CORNER POSITION FALLS IN RAILROAD RIGHT-OF-WAY BETWEEN MAIN LINE RAILS. THEREFORE TWO REFERENCE MONUMENTS WERE SET ON SECTION LINE.



CERTIFICATE OF SURVEY NUMBER 1149