

LEGEND

- FOUND 5/8" STEEL ROD WITH CAP STAMPED J.H.N. 4661 S
- SET 5/8" X 24" STEEL ROD WITH CAP STAMPED J.H.N. 4661 S
- () DATA PER C. OF S. NO. 307
- (()) DATA PER H.E.S. NO. 342

Lincoln County, Montana

CERTIFICATE OF SURVEY

A PART OF H.E.S. No. 342
IN UNSURVEYED T. 35 N., R. 31 W., P.M.M.

MARCH, 1983

DESCRIPTION PARCEL A

An irregular tract of land, containing 30.709 acres, more or less, situated in a part of Homestead Entry Survey (H.E.S.) Number 342, in unsurveyed T. 35 N., R. 31 W., P.M.M., Lincoln County, Montana, and being more particularly described as follows:

Beginning at a 5/8" steel rod on the south line of said H.E.S. No. 342, from which the original stone monument marking the southeast corner of H.E.S. No. 342 (also known as corner 3) bears N 89° 54' 58" E, 425.00 feet; thence, westerly along the south line of said H.E.S. No. 342, S 89° 54' 58" W, 223.44 feet to a brass cap; thence, continuing along said south line, S 89° 54' 58" W, 202.87 feet to a 5/8" steel rod being a witness corner on the right bank of the South Fork Yaak River; thence, continuing along said south line, S 89° 54' 58" W, 22.37 feet, more or less, to the thread of said river; thence, northerly along the thread of said river, downstream the following approximate courses: N 31° W, 55.0 feet; thence, N 81° W, 115.0 feet; thence, N 3° W, 90.0 feet; thence, N 55° W, 335.0 feet; thence N 14° E, 120.0 feet; thence, N 44° W, 390.0 feet; thence, N 17° W, 210.0 feet; thence, N 8° W, 240.0 feet; thence, N 46° E, 190.0 feet; thence, N 33° W, 160.0 feet; thence, N 22° E, 150.0 feet; thence, N 60° W, 150.0 feet; thence N 18° E, 95.0 feet; thence, N 26° W, 115.0 feet; thence, N 38° W, 100.0 feet; thence, N 16° E, 80.0 feet; thence, N 35° W, 160.0 feet; thence, N 84° E, 215.0 feet; thence, N 4° E, 78.32 feet to a point on the south line of the 9.986 acre Exception as per C. of S. 307, Lincoln County, Montana records; thence, leaving said thread of said river, easterly along said south line of said Exception S 89° 43' 00" E, 44.77 feet, more or less, to a 5/8" steel rod being a witness corner on the right bank of said river; thence, continuing along said south line of said Exception, S 89° 43' 00" E, 332.95 feet to a 5/8" steel rod; thence, S 26° 12' 03" E, 2247.23 feet to the point of beginning.

Bearing based on said south line of the 9.986 acre Exception as per C. of S. 307.

SUBJECT TO: A roadway easement, for ingress and egress, over and across the south forty (40) feet of the above described parcel.

DESCRIPTION PARCEL B

An irregular tract of land, containing 30.000 acres, more or less, situated in a part of Homestead Entry Survey (H.E.S.) Number 342, in unsurveyed T. 35 N., R. 31 W., P.M.M., Lincoln County, Montana, and being more particularly described as follows:

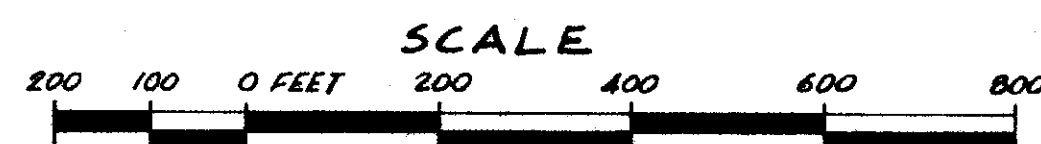
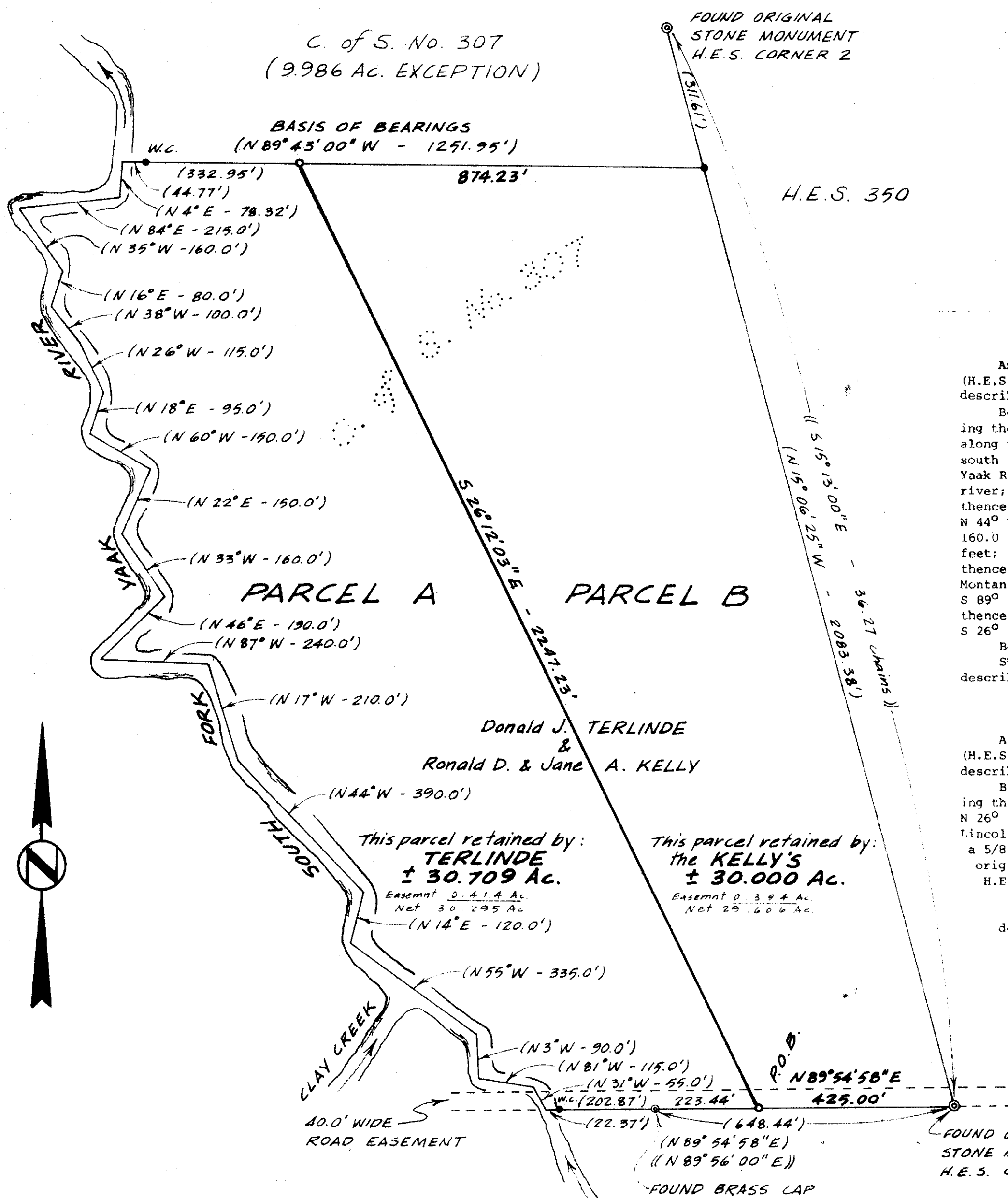
Beginning at a 5/8" steel rod on the south line of said H.E.S. No. 342, from which the original stone monument marking the southeast corner of H.E.S. No. 342 (also known as corner 3) bears N 89° 54' 58" E, 425.00 feet; thence, N 26° 12' 03" W, 2247.23 feet to a 5/8" steel rod on the south line of the 9.986 acre Exception as per C. of S. 307, Lincoln County, Montana records; thence, easterly along said south line of said Exception, S 89° 43' 00" E, 874.23 feet to a 5/8" steel rod; thence southerly along the east line of said H.E.S. No. 342, S 15° 06' 25" E, 2083.38 feet to said original stone monument marking the southeast corner of H.E.S. No. 342; thence, westerly along the south line of said H.E.S. No. 342, S 89° 54' 58" W, 425.00 feet to the point of beginning.

Bearings based on said south line of the 9.986 acre Exception as per C. of S. 307.

SUBJECT TO: A roadway easement, for ingress and egress, over and across the south forty (40) feet of the above described parcel.

PURPOSE

The purpose of this division of land is to separate joint ownership. This division creates two irregular parcels; each parcel being greater than twenty (20) acres in size. Subject parcels have been surveyed pursuant to Section 76-3-401, M.C.A.



NINNEMAN ENGINEERING TROY, MONTANA

JOB NO. B3-14 TUBE NO. 238

APPROVED: *Paul E. Burton*
Examining Land Surveyor
Date: 3/29/83 Registration No. 4974-S

APPROVED: *Jim R. Moray*
Chairman, Board of Commissioners

ATTESTED: *Janet B. Sigel*
County Clerk and Recorder

Dated this 30th day of March, 1983

STATE OF MONTANA COUNTY OF LINCOLN

Filed on this 30th day of March, 1983
at 1:20 o'clock P.M.

Janet B. Sigel
County Clerk and Recorder

by *Patty Bell*
Deputy

Certificate of Survey No. 1115