

CERTIFICATE OF SURVEY

Dependent Resurvey

and Subdivision

**Sections 2 & 11,
T31N, R34W, P.M.M.**

**Lincoln County, Montana
October 1982**

LEGEND

- FOUND MONUMENT AS NOTED
- MONUMENT SET THIS SURVEY - 2-1/2" ALUMINUM PIPE WITH 3" ALUMINUM CAP STAMPED 5612S
- MONUMENT SET THIS SURVEY - 3/4" ALUMINUM ROD WITH 3" ALUMINUM CAP STAMPED 5612S
- MONUMENT SET THIS SURVEY - 2-1/2" BRASS ROCK CAP 5612S

< > GLO RECORD

[] RECORD AS PER RECORDATION FORM, BOOK 1, PAGE 4, 5, AND 6 AS FILED BY J. W. NINNEMAN (534ES) IN 1963.

() RECORD AS PER CERTIFICATE OF SURVEY 514

— BRUSHED, BLAZED AND POSTED LINE

PURPOSE OF SURVEY

THE PURPOSE OF THIS SURVEY IS TO LOCATE, UPON THE GROUND, THE EXISTING TITLE LINES BETWEEN NATIONAL FOREST SYSTEM LANDS AND PRIVATE LANDS, AND NO PARCELS ARE HEREBY CREATED.

METHOD OF SURVEY

THEODOLITE-EDM TRAVERSE IN COMBINATION WITH LASER RANGE POLE TRIANGULATION.

BASIS OF BEARING

SOLAR OBSERVATION

LEGAL DESCRIPTIONS (SECTION 2)

PRIVATE LANDS COMPLETELY AND ADEQUATELY DEFINED HEREON - W 1/2 W 1/2 NE 1/4 SW 1/4, NW 1/4 SW 1/4, SW 1/4 SW 1/4, W 1/2 SE 1/4 SW 1/4, S 1/2 SE 1/4 SE 1/4 SW 1/4, E 1/2 W 1/2 SE 1/4 OF SECTION 2, T31N., R34W., P.M.M.

NATIONAL FOREST SYSTEM LANDS COMPLETELY AND ADEQUATELY DEFINED HEREON - SW 1/4 SW 1/4 NE 1/4, NW 1/4, E 1/2 NE 1/4 SW 1/4, E 1/2 W 1/2 NE 1/4 SW 1/4, NE 1/4 SE 1/4 SW 1/4, N 1/2 SE 1/4 SE 1/4 SW 1/4, W 1/2 W 1/2 SE 1/4 OF SECTION 2, T31N, R34W, P.M.M.

NOTE: U.S. HIGHWAY 2 RUNS THROUGH THE E 1/2 SE 1/4, AND THE NE 1/4 OF SAID SECTION 2, NOT BEING SHOWN HEREON.

BURLINGTON NORTHERN RAILWAY RUNS THROUGH THE NE 1/4 NE 1/4 OF SAID SECTION 2, NOT BEING SHOWN HEREON.

SURVEY HISTORY

ORIGINAL TOWNSHIP SUBDIVISIONS BY A. BENEDICT IN JUNE 1903.

DEPENDENT RESURVEY OF EAST SECTION LINE OF SECTIONS 2 AND 11 BY J. W. NINNEMAN 534ES IN 1963.

REMONUMENTATION BY BLM IN 1967.

RETRACEMENT OF EAST SECTION LINE OF SECTION 2, BY J. H. NINNEMAN IN 1976 AS RECORDED IN BOOK 1, PAGE 480 OF CORNER RECORDATIONS.

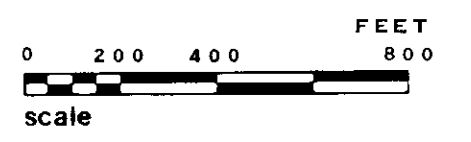
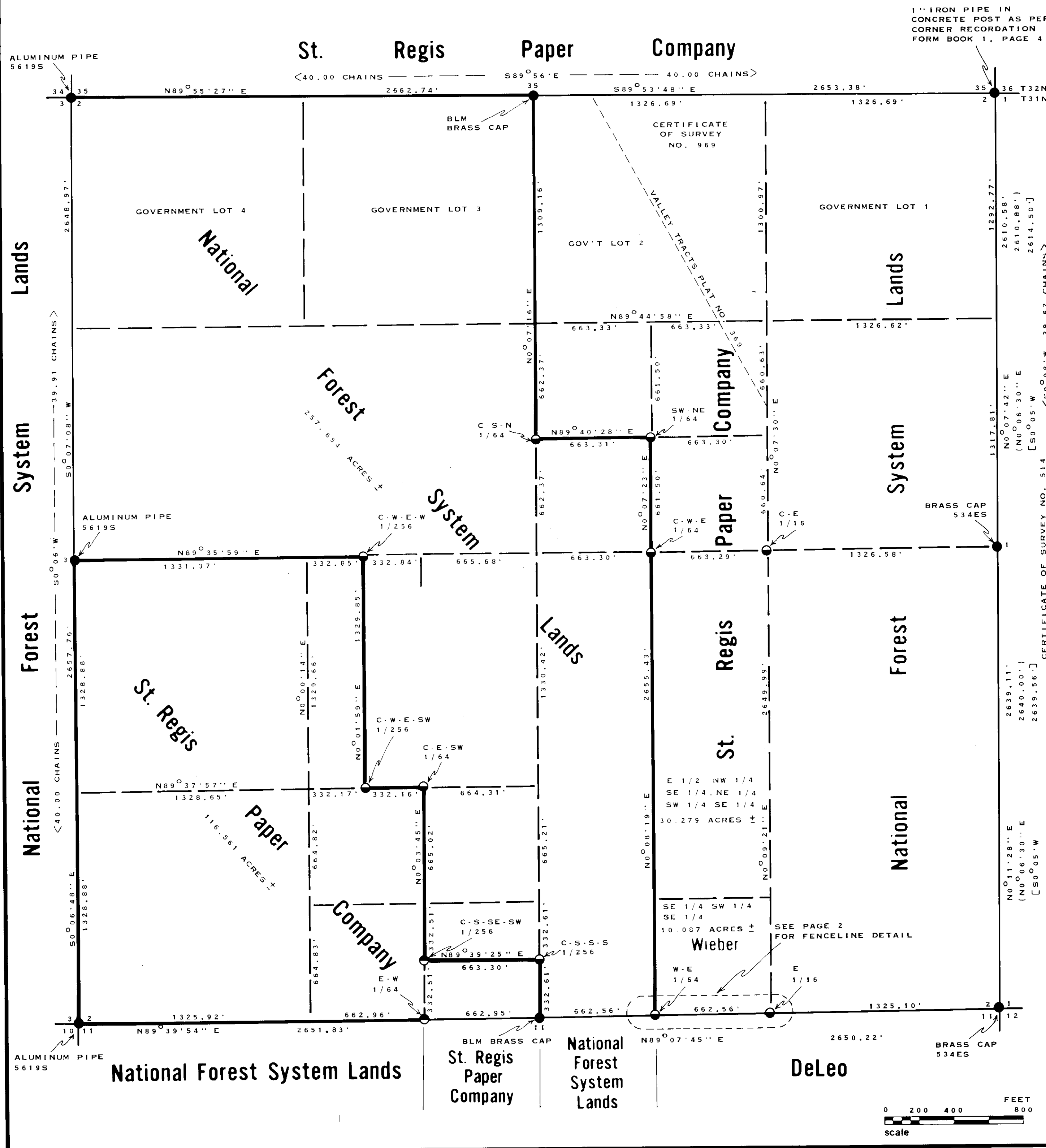
RETRACEMENT OF EAST SECTION LINE OF SECTION 2, BY J. H. NINNEMAN IN 1978 AS PER CERTIFICATE OF SURVEY 514.

REMONUMENTATION BY S. STAAB IN 1982. (5619S)

REMONUMENTATION BY J. H. NINNEMAN IN 1982. (4661S)

CERTIFICATE OF SURVEY NO. 1105

SHEET 1 OF 2



St. Regis Paper Company

National Forest System Lands

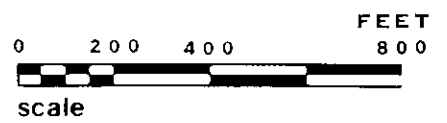
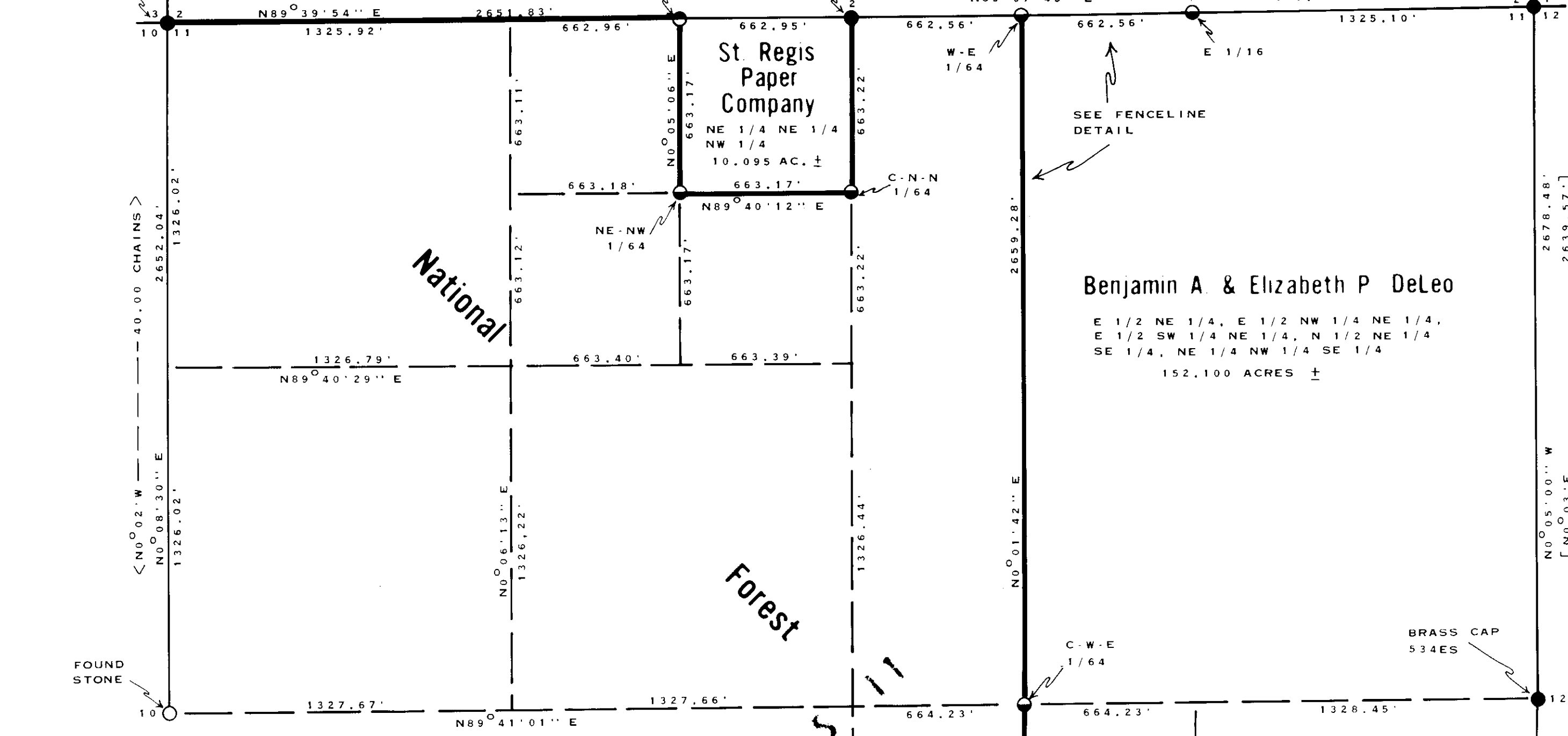
National Forest System Lands

Wieber

ALUMINUM PIPE 5619S

BLM BRASS CAP

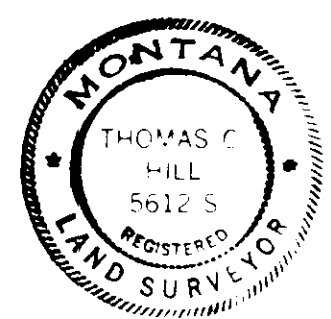
BRASS CAP 534ES



- FOUND MONUMENT AS NOTED
- MONUMENT SET THIS SURVEY - 2-1/2" ALUMINUM PIPE WITH 3" ALUMINUM CAP STAMPED 5612S
- MONUMENT SET THIS SURVEY - 3/4" ALUMINUM ROD WITH 3" ALUMINUM CAP STAMPED 5612S
- MONUMENT SET THIS SURVEY - 2-1/2" BRASS ROCK CAP 5612S
- < > GLO RECORD
- [] RECORD AS PER RECORDATION FORM, BOOK 1, PAGE 4, 5, AND 6 AS FILED BY J. W. NINNEMAN (534ES) IN 1963.
- BRUSHED, BLAZED, AND POSTED LINE

LEGAL DESCRIPTION - SECTION 11
 PRIVATE LANDS DEFINED - E 1/2 NE 1/4, E 1/2 NW 1/4 NE 1/4, E 1/2 SW 1/4 NE 1/4, N 1/2 NE 1/4 SE 1/4, NE 1/4 NW 1/4 SE 1/4, NE 1/4 NE 1/4 NW 1/4 OF SECTION 11, T31N., R34W, P.M.M.

CERTIFICATE
 I HEREBY CERTIFY THAT I AM A REGISTERED LAND SURVEYOR IN THE STATE OF MONTANA, THAT THE SURVEY SHOWN ON THIS PLAT HAS BEEN PREPARED IN ACCORDANCE WITH THE MONTANA CODE ANNOTATED (SECTIONS 76-3-101 THROUGH 76-6-613) AND THE LINCOLN COUNTY REGULATIONS ADOPTED PURSUANT THERETO.
Thomas C Hill
 THOMAS C. HILL
 MONTANA REGISTRATION NO. 5612S



CERTIFICATE OF EXAMINING LAND SURVEYOR
 APPROVED THIS 13TH DAY OF MARCH 1983, A.D.
Jack H. Ninneman 46615
 EXAMINING LAND SURVEYOR REGISTRATION NO.
 APPROVED: *Jim R. Moray*
 CHAIRMAN, LINCOLN COUNTY COMMISSIONERS

CERTIFICATE OF CLERK AND RECORDER
 STATE OF MONTANA, COUNTY OF LINCOLN FILED THIS 9TH DAY OF March 1983 A.D.
 AT 1:00 O'CLOCK P.M.
Janet B. F. Siegel BY *Scott Beal*
 COUNTY CLERK RECORDER DEPUTY

