

CERTIFICATE OF SURVEY

DEPENDENT RESURVEY AND SUBDIVISION

SECTIONS 34 AND 35, T.33N., R.26W., P.M.M.

LINCOLN COUNTY, MONTANA

JULY 1982

HISTORY:

ORIGINAL SURVEY BY ABRAHAM L. RINEARSON AND GORDON C. SMITH

REMONUMENTATION BY B.L.M. IN 1960 AND 1961.

SMITH SURVEY IN 1982. C.O.S. NO. 1035.

NOTES:

POSITION OF CS 1/16, SECTION 35, WAS DETERMINED USING THE SECTION SUBDIVISION AS PER C.O.S. NO. 1035, TYING NECESSARY CORNERS THERETO.

BEARINGS WERE BASED ON CERTIFICATE OF SURVEY NO. 1035, FILED ON JUNE 23, 1982.

THIS SURVEY WAS COMPLETED BY UTILIZING CONVENTIONAL TRAVERSE AND INTERSECTION METHODS.

FOR FURTHER CORNER INFORMATION REFER TO THE CORNER RECORDATION FORMS ON FILE IN THE CLERK AND RECORDERS OFFICE, LINCOLN COUNTY COURT HOUSE, LIBBY, MONTANA.

PRIVATE OWNERSHIP:

SE 1/4, E 1/2 SW 1/4, NW 1/4 NW 1/4, NW 1/4 SW 1/4 OF SECTION 34 T.33N., R.26W., P.M.M., AND THE W 1/2 NE 1/4, W 1/2 SE 1/4, N 1/2 SW 1/4, OF SECTION 35, T.33N., R.26W., P.M.M.

GOVERNMENT OWNERSHIP:

SW 1/4 SW 1/4, S 1/2 NW 1/4, NE 1/4 NW 1/4, OF SECTION 34, T.33N., R.26W., P.M.M. AND THE S 1/2 SW 1/4 OF SECTION 35, T.33N., R.26W., P.M.M.

PURPOSE OF SURVEY:

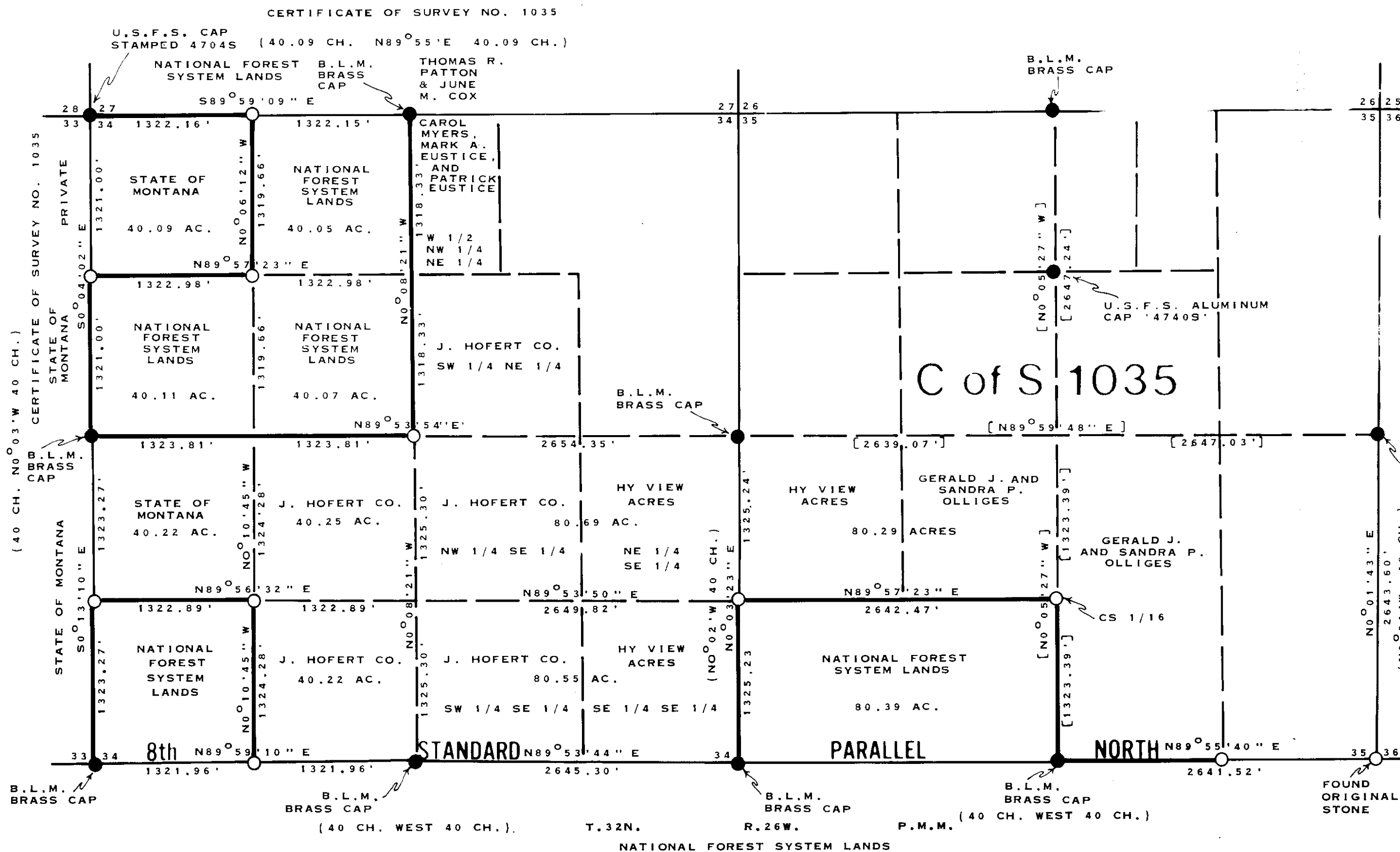
THE PURPOSE OF THIS SURVEY IS TO RETRACE AND MARK THE BOUNDARIES OF EXISTING RECORD PARCELS, DISTINGUISHING BETWEEN NATIONAL FOREST LANDS AND PRIVATE LANDS, AND NO DIVISION OF LAND IS HEREBY CREATED.

1/4	SEC	T.	R.
☒	34	33	26
☒	35	33	26



LEGEND:

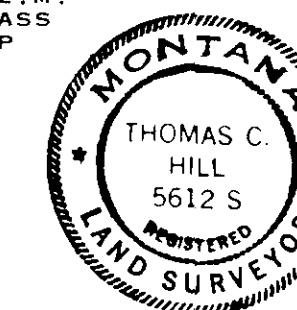
- FOUND MONUMENT AS NOTED
- MONUMENT SET THIS SURVEY, 2-1/2 INCH ALUMINUM PIPE WITH 3-1/4 INCH ALUMINUM CAP MARKED 56125
- () ORIGINAL G.L.O. CALLS
- [] AS PER C.O.S. NO. 1035



CERTIFICATE:

I HEREBY CERTIFY THAT I AM A REGISTERED LAND SURVEYOR IN THE STATE OF MONTANA, THAT THE SURVEY SHOWN ON THIS PLAT HAS BEEN PREPARED IN ACCORDANCE WITH THE MONTANA CODE ANNOTATED [SECTIONS 76-3-101 THROUGH 7-6-613], AND THE LINCOLN COUNTY REGULATIONS ADOPTED PURSUANT THERETO.

THOMAS C. HILL *Thomas C Hill*
MONTANA REGISTRATION NO. 56125



CERTIFICATE OF EXAMINING LAND SURVEYOR:

APPROVED THIS 6TH DAY OF JANUARY, 1983 A.D.

Jack H. Rinne
EXAMINING LAND SURVEYOR
REGISTRATION NO. 46615

APPROVED *Jim R. Morey*
CHAIRMAN, LINCOLN COUNTY COMMISSIONERS.

CERTIFICATE OF CLERK AND RECORDER:
STATE OF MONTANA, COUNTY OF LINCOLN, FILED THIS 27TH DAY OF January, 1983 A.D. AT 2:00 O'CLOCK P.M.
Paul B. Siegel BY *Duffy Bull*
COUNTY CLERK RECORDER DEPUTY

CERTIFICATE OF SURVEY NUMBER 1095