

# CERTIFICATE OF SURVEY

SECTION 17, TWP. 31N., R. 34W., P.M.M.

**PURPOSE FOR SURVEY**

The purpose for this survey was to determine the boundary between the U.S. and the State of Montana in Section 17, Twp. 31N., R. 34W., P.M.M.

**BASIS OF BEARINGS**

Bearings were based upon solar observations made on August 16, 1982.

**NOTE**

This survey was completed utilizing an Alpha Electronics GM 1 Total Station, a 100' V.M. alidade, a Lietz Red One electronic distance meter, and conventional methods of adjustment, yielding an accuracy exceeding Class B standards. Field calculations were performed on a Hewlett-Packard 41-C and Texas Instruments 58 programmable calculators. Office calculations were performed on a Hewlett-Packard 97 and Texas Instruments 59 programmable calculators.

**HISTORY-TWP. 31N., R. 34W., P.M.M.**

The East Township boundary (Lake Creek Guide Meridian) was originally surveyed by Daniel P. Malaga in October, 1893. In May and June of 1903, Allan B. Benfield surveyed the North, South, and West Township boundaries, retraced the Northerly 3 miles of the Lake Creek Guide Meridian, and subdivided the Township into sections. L.D. Lyman and R.C. Burnford retraced the Easterly 3 miles and the Easterly 1 mile of the South Township boundary in June and July, 1913.

BLM remonumentation of the area occurred in 1967. Fire swept through the area of Twp. 31N., R. 34W., P.M.M. sometime prior to the 1903 survey. More recent Class "C" fires of record occurred in 1910, 1915, 1918, 1920, 1922, 1924, and 1927.

**LEGAL DESCRIPTIONS - SECTION 17**

**Public**

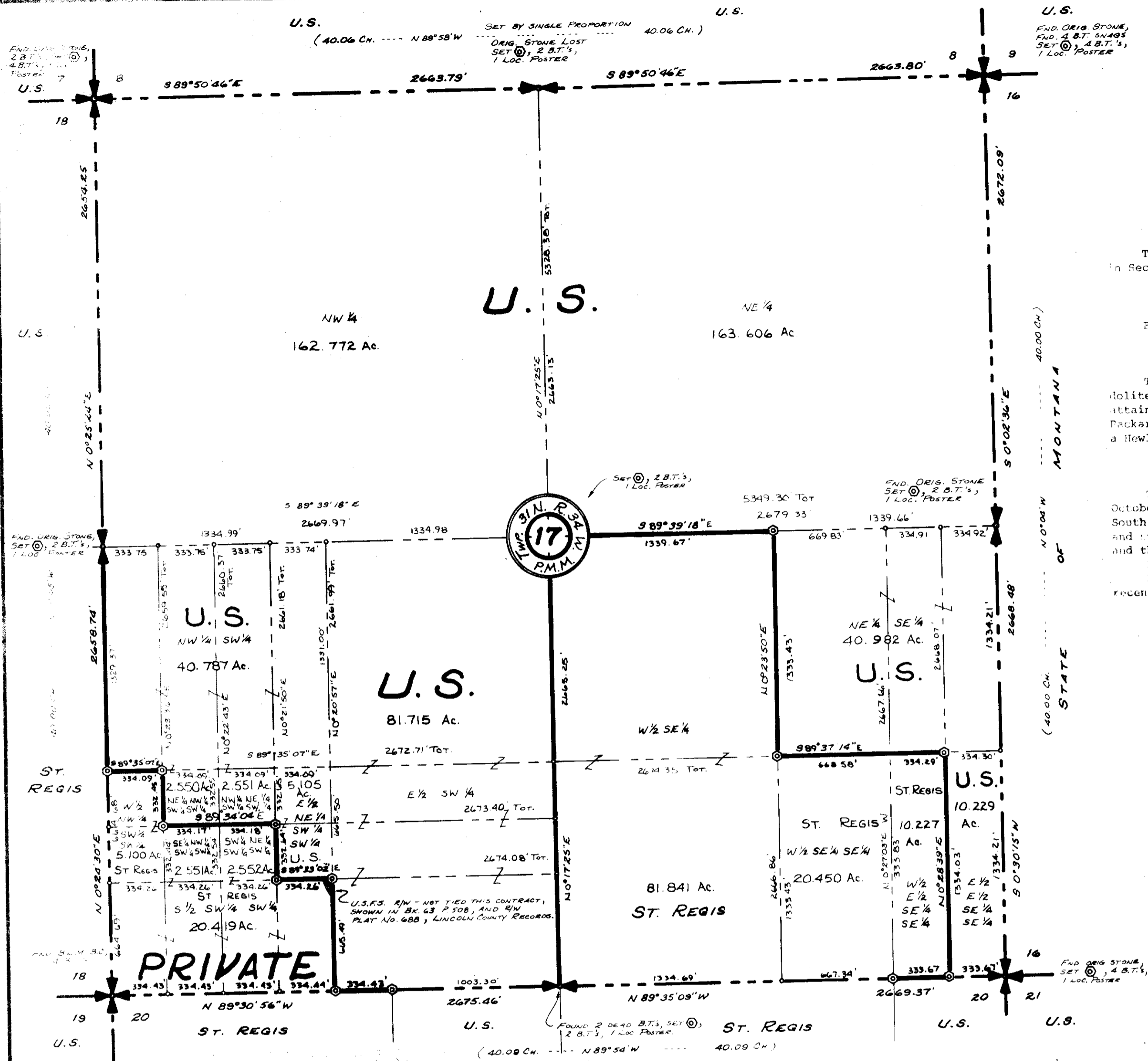
The NW 1/4, containing 162.772 acres, more or less, and the NE 1/4, containing 163.606 acres, more or less, and the NW 1/4 SW 1/4, containing 40.787 acres, more or less, and the E 1/4 SW 1/4, containing 81.715 acres, more or less, and the NE 1/4 SW 1/4, containing 40.982 acres, more or less, and the NW 1/4 SW 1/4, containing 2.550 acres, more or less, and the NE 1/4 SW 1/4, containing 2.551 acres, more or less, and the NW 1/4 SW 1/4, containing 5.105 acres, more or less, and the E 1/4 SW 1/4, containing 5.100 acres, more or less, and the NE 1/4 SW 1/4, containing 20.419 acres, more or less, and the NW 1/4 SW 1/4, containing 10.227 acres, more or less, and the NE 1/4 SW 1/4, containing 10.229 acres, more or less, all as shown hereon.

**Private**

The NW 1/4 SW 1/4, containing 5.100 acres, more or less, and the NE 1/4 SW 1/4, containing 2.551 acres, more or less, and the NW 1/4 SW 1/4, containing 2.551 acres, more or less, and the NE 1/4 SW 1/4, containing 20.419 acres, more or less, and the NW 1/4 SW 1/4, containing 81.841 acres, more or less, and the NE 1/4 SW 1/4, containing 20.450 acres, more or less, and the NW 1/4 SW 1/4, containing 10.227 acres, more or less, all as shown hereon.

**LEGEND**

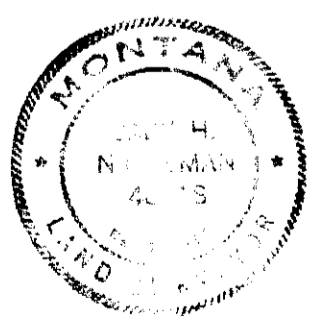
- ⊙ Set a 3" aluminum capped monument on a 30" pipe, stamped with N. 44010.
- ⊕ Monument found or set, as noted.
- ( ) Record per original G.L.O. surveys.
- Point computed only, not set.



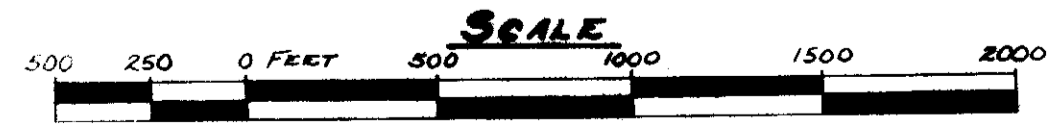
**LAND SURVEYOR'S CERTIFICATION**

I hereby certify that I am a Registered Land Surveyor in the State of Montana, that this certificate is a true representation of the survey made under my supervision, at the request of the U.S.F.S., Forest Service, on August, 1982 and October, 1982, in accordance with the Montana Code Annotated, Sections 76-3-101 through 76-3-614, (1979) and Lincoln County Regulations adopted thereunto.

*Paul H. Ninneman*  
Paul H. Ninneman, R.L.S.  
Montana Registration No. 4661S



1/4	SEC.	TWP.	RNG.
	17	31N	34W
LINCOLN COUNTY PRINCIPAL MERIDIAN, MONTANA			



Ninneman Engineering Troy, Montana

NOVEMBER, 1982

PREACHER MTN. ... U.S.F.S. CONTRACT NO. RFP R1-14-82-36

APPROVED: *Paul H. Ninneman*  
Examining Land Surveyor  
Date 12-9-82 Registration No. 4974S

STATE OF MONTANA COUNTY OF LINCOLN  
Filed on this 15th day of December 1982  
at 2:05 o'clock P.M.

APPROVED: *Bill Greedo*  
Chairman Board of Commissioners

*Clarence De Vaughn*  
County Clerk and Recorder  
by *Ray Bell* Deputy

ATTESTED: *Clarence De Vaughn*  
County Clerk and Recorder

Dated this 15 day of Dec 1982

Certificate of Survey No. 1086