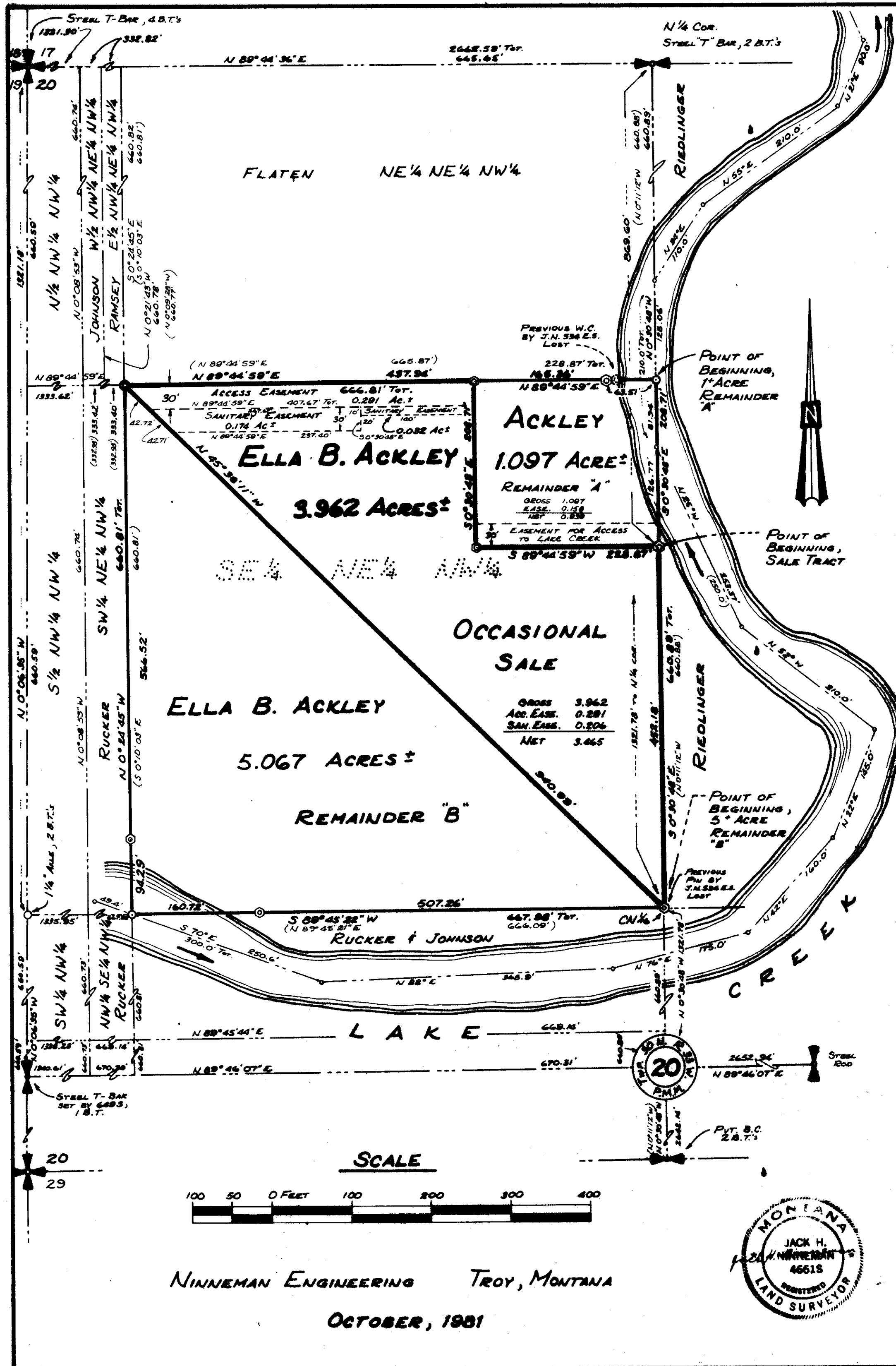


# LINCOLN COUNTY, MONTANA

## CERTIFICATE OF SURVEY

### IN THE SE 1/4 NE 1/4 NW 1/4 OF SECTION 20 TWP. 30 N., R. 33 W., P.M.M.



**DESCRIPTION SALE TRACT**

An irregular tract of land near Troy in Lincoln County, Montana, lying wholly within the SE 1/4 NE 1/4 NW 1/4 of Section 20, Twp. 30N., R. 33W., P.M.M., containing 3.962 acres, more or less, and more particularly described as follows:  
 Beginning at a 5/8" capped steel pin stamped J.H.N. 4661S on the North-South quarter-section line of Section 20, Twp. 30 N., R. 33W., P.M.M., lying S 0°30'48"E 869.60 feet from the N 1/4 corner of said Section 20; thence, S 0°30'48"E 452.18 feet to the CN 1/16 corner of said Section 20; thence, N 45°38'11"W 940.99 feet to a point; thence, N 89°44'59"E 437.94 feet to a point; thence, S 0°30'48"E 208.71 feet to a point; thence, N 89°44'59"E 228.87 feet to the point of beginning;  
 Including an access easement to Lake Creek, 30 feet in width along the South line of Remainder "A", containing 0.158 acre, more or less, as shown hereon.  
 Subject to an access easement 30 feet in width along the North line, containing 0.291 acre, more or less; also subject to a sanitary easement 10 feet and 30 feet in width near the North line, containing a total of 0.206 acre, more or less, all as shown hereon.

**DESCRIPTION REMAINDER "A"**

A rectangular tract of land near Troy in Lincoln County, Montana, lying wholly within the SE 1/4 NE 1/4 NW 1/4 of Section 20, Twp. 30N., R. 33W., P.M.M., containing 1.097 acre, more or less, and more particularly described as follows:  
 Beginning at a point on the mid-channel of Lake Creek, S 0°30'48"E 660.89 feet from the N 1/4 corner of Section 20, Twp. 30N., R. 33W., P.M.M.; thence, S 0°30'48"E 208.71 feet to a 5/8" capped steel pin stamped J.H.N. 4661S; thence, S 89°44'59"W 228.87 feet to a point; thence, N 0°30'48"W 208.71 feet; thence, N 89°44'59"E 165.36 feet to a 5/8" capped steel pin stamped J.H.N. 4661S, set as a witness corner; thence, continuing N 89°44'59"E 63.51 feet to the point of beginning.  
 Including an access easement 30 feet in width, containing 0.291 acre, more or less, and a sanitary easement 10 feet and 30 feet in width, containing a total of 0.206 acre, more or less, both as shown hereon.  
 Subject to an access easement 30 feet in width along the South line; containing 0.158 acre, more or less, as shown hereon.

**DESCRIPTION REMAINDER "B"**

A triangular tract of land near Troy in Lincoln County, Montana, lying wholly within the SE 1/4 NE 1/4 NW 1/4 of Section 20, Twp. 30N., R. 33W., P.M.M., containing 5.067 acres, more or less, and more particularly described as follows:  
 Beginning at a 5/8" capped steel pin stamped J.H.N. 4661S, marking the CN 1/16 corner of Section 20, Twp. 30N., R. 33W., P.M.M., lying S 0°30'48"E 1321.78 feet from the N 1/4 corner of said Section 20; thence, S 89°45'22"W 507.26 feet to a pin set as a witness corner; thence, continuing S 89°45'22"W 160.72 feet to a point on the mid-channel of Lake Creek; thence, N 0°24'45"W 94.29 feet to a pin set as a witness corner; thence, continuing N 0°24'45"W 566.52 feet to the Northwest corner of the SE 1/4 NE 1/4 NW 1/4; thence, S 45°38'11"E 940.99 feet to the point of beginning.

**EXEMPTION CERTIFICATE**

I hereby certify that the purpose of this division of land is to transfer ownership of the parcel created as an occasional sale; furthermore, I certify that I am entitled to use this exemption in that I am in compliance with all conditions imposed in the use of this exemption; therefore, this division of land is exempt from review as a subdivision pursuant to Section 76-3-207 (d), M.C.A.

Ella B. Ackley  
 The foregoing certificate was subscribed and sworn to before me this 25th day of November, 1982.  
 Notary Public James P. Ryland My Commission Expires 3-24-83

**BASIS OF BEARINGS**

Bearings were based on a tie to the Range Line between Twp. 30 N., R. 33 W., P.M.M., and Twp. 30 N., R. 34 W., P.M.M., (Lake Creek Guide Meridian), reported to bear North as per G.L.O. records.

**LEGEND**

- Set a 5/8" X 24" capped steel pin stamped J.H.N. 4661S
- Steel pin by J.N. 534 E.S.
- ⊙ Points computed only, not set.
- ( ) Record as per C. of S. No. 129

APPROVED: Stephen D. Stueb  
 Examining Land Surveyor  
 Registration No. 36195

APPROVED: Bill Gould  
 Chairman Board of Commissioners

ATTESTED: Edna S. Vaughn  
 County Clerk and Recorder

Dated this 7 day of Dec, 1982

STATE OF MONTANA COUNTY OF LINCOLN

Filed on this 1st day of December, 1982  
 at 3:40 o'clock P.M.

Edna S. Vaughn  
 County Clerk and Recorder

by Betty Lee  
 Deputy

**Certificate of Survey No. 1080**

NINNEMAN ENGINEERING TROY, MONTANA  
 OCTOBER, 1981

