

LINCOLN COUNTY, MONTANA

CERTIFICATE OF SURVEY

IN THE NW 1/4 NW 1/4 OF SECTION 16, TWP. 33N., R. 34W., P.M.M.

C. OF S. 921 SHOWS THE E 1/2 NW 1/4 SECTION 16 OF SEC. 9, TWP. 33N., R. 34W., P.M.M.

DESCRIPTION SALE TRACT

An irregular tract of land near Troy in Lincoln County, Montana, lying wholly within the NW 1/4 NW 1/4 of Section 16, Twp. 33 N., R. 34W., P.M.M., containing 10.000 acres, more or less, and more particularly described as follows: Beginning at the NW 1/16 corner of Section 16, Twp. 33N., R. 34W., P.M.M. (a 5/8" capped steel pin stamped J.H.N. 4661S); thence, along the N 1/16 line S 89°47'12"W 598.00 feet to a 5/8" capped steel pin stamped J.H.N. 4661S; thence, N 21°41'54"E 19.61 feet to a 5/8" capped steel pin stamped J.H.N. 4661S on the Northerly line of an existing access easement, set as a witness corner; thence, continuing N 21°41'54"E 1407.43 feet to a 5/8" capped steel pin stamped J.H.N. 4661S on the North line of said Section 16; thence, along said North line N 89°44'49"E 60.00 feet to a 5/8" capped steel pin stamped J.H.N. 4661S, the W 1/16 corner; thence, S 0°26'59"E 1324.00 feet to the point of beginning;

Including an access easement 30 feet wide, containing 0.462 acre, more or less, entering the aforesaid 10.000 acre tract at the Southwest corner, as shown hereon;
Subject to an access easement 30 feet wide, containing 0.399 acre, more or less, near the South line of said 10.000 acre tract, as shown hereon.

DESCRIPTION REMAINDER

An irregular tract of land near Troy in Lincoln County, Montana, lying wholly within the NW 1/4 NW 1/4 of Section 16, Twp. 33 N., R. 34W., P.M.M., containing 23.278 acres, more or less, and more particularly described as follows: Beginning at a 5/8" capped steel pin stamped J.H.N. 4661S on the North line of Section 16, Twp. 33N., R. 34W., P.M.M.; thence, S 21°41'54"W 1407.43 feet to a 5/8" capped steel pin stamped J.H.N. 4661S on the Northerly line of an existing access easement; thence, continuing S 21°41'54"W 19.61 feet to a 5/8" capped steel pin stamped J.H.N. 4661S on the N 1/16 line of said Section 16; thence, along said N 1/16 line S 89°47'12"W 656.24 feet to a 5/8" capped steel pin on the Easterly right of way line of Old U.S. Highway 2; thence, along said right of way line N 7°53'53"E 40.78 feet to a 5/8" capped steel pin stamped J.H.N. 4661S; thence, along the arc of a curve to the right, having a radius of 2720 feet, turning through an angle of 7°13'00", a distance of 342.60 feet to a 5/8" capped steel pin stamped J.H.N. 4661S; thence, continuing along said Easterly right of way line N 15°06'53"E 982.71 feet to a 5/8" capped steel pin stamped J.H.N. 4661S on the North line of said Section 16; thence, along said North line N 89°44'49"E 853.71 feet to the point of beginning;

Subject to an access easement 30 feet wide, containing 0.462 acre, more or less, near and along the South line, as shown hereon.

EXEMPTION CERTIFICATE/PURPOSE FOR SURVEY

We hereby certify that the purpose for this division of land is to transfer ownership of the parcel created as an occasional sale; furthermore, we certify that we are entitled to use this exemption in that we are in compliance with all conditions imposed in the use of this exemption; therefore, this division of land is exempt from review as a subdivision pursuant to Section 76-3-207 (d), M.C.A., 1978.

Michael W. O'Donnell Date 1-19-82 *Lisa R.H. O'Donnell* Date 1-19-82
The foregoing certificate was subscribed and sworn to before me this 19 day of January, 1982.
Betty L. Baker Notary Public My Commission Expires 7-11-84

BASIS OF BEARINGS

Bearings were based on the bearing of the West half of the North 1/16 line, reported to bear N 89°47'12"E as per Recordation Form for Section 16, Twp. 33N., R. 34W., P.M.M., on file in the Lincoln County Courthouse.

LEGEND

- [] Record as per Plat No. 2104
- < > Record as per C. of S. No. 921
- () Record as per Sec. 16, Twp. 33N., R. 34W. Recordation form
- 5/8" x 24" capped steel pin stamped J.H.N. 4661S, set this survey
- 5/8" x 24" capped steel pin stamped J.H.N. 4661S, set previous survey
- ⊙ Brass capped Monument
- 4" steel pin, set previous survey
- ⊙ Points computed only, not set

STATE OF MONTANA COUNTY OF LINCOLN

Filed on this 29th day of November, 1982
at 3:15 o'clock P.M.

Thomas L. Vaughn
County Clerk and Recorder

by *Betty L. Baker* Deputy

Certificate of Survey No. 1079

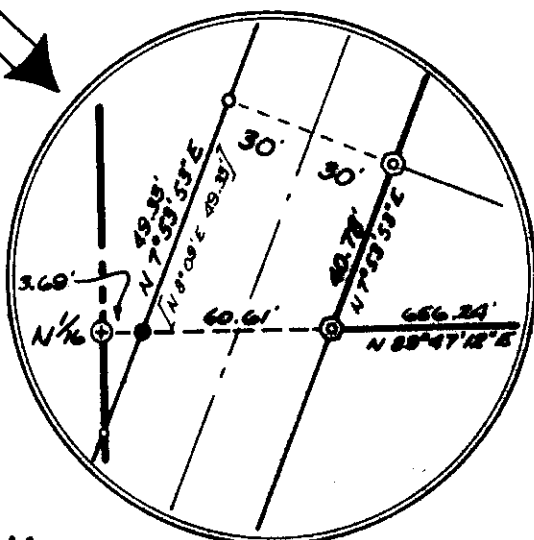
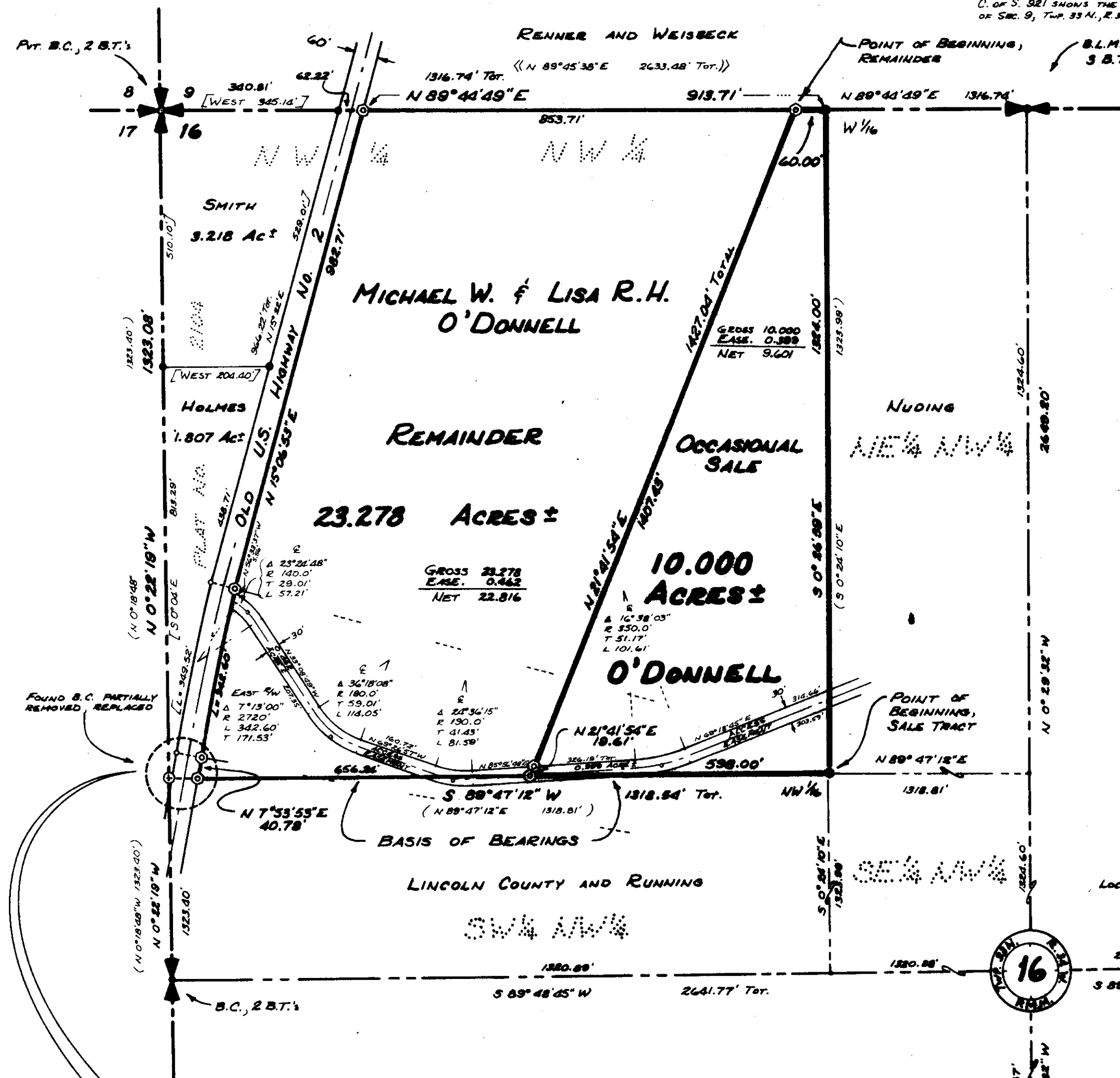


APPROVED: *Stephen D. Staud*
Examining Land Surveyor
Registration No. 5619.5

APPROVED: *Bill Gould*
Chairman, Board of Commissioners

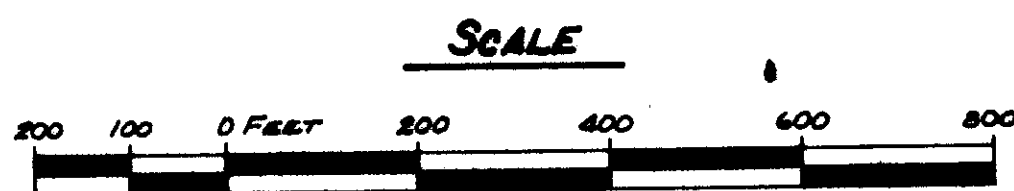
ATTESTED: *Eleanor R. Blaylock*
County Clerk and Recorder

Dated this 29 day of Nov., 1982



DETAIL NOT TO SCALE

DECEMBER, 1981



MINNEMAN ENGINEERING
TROY, MONTANA