

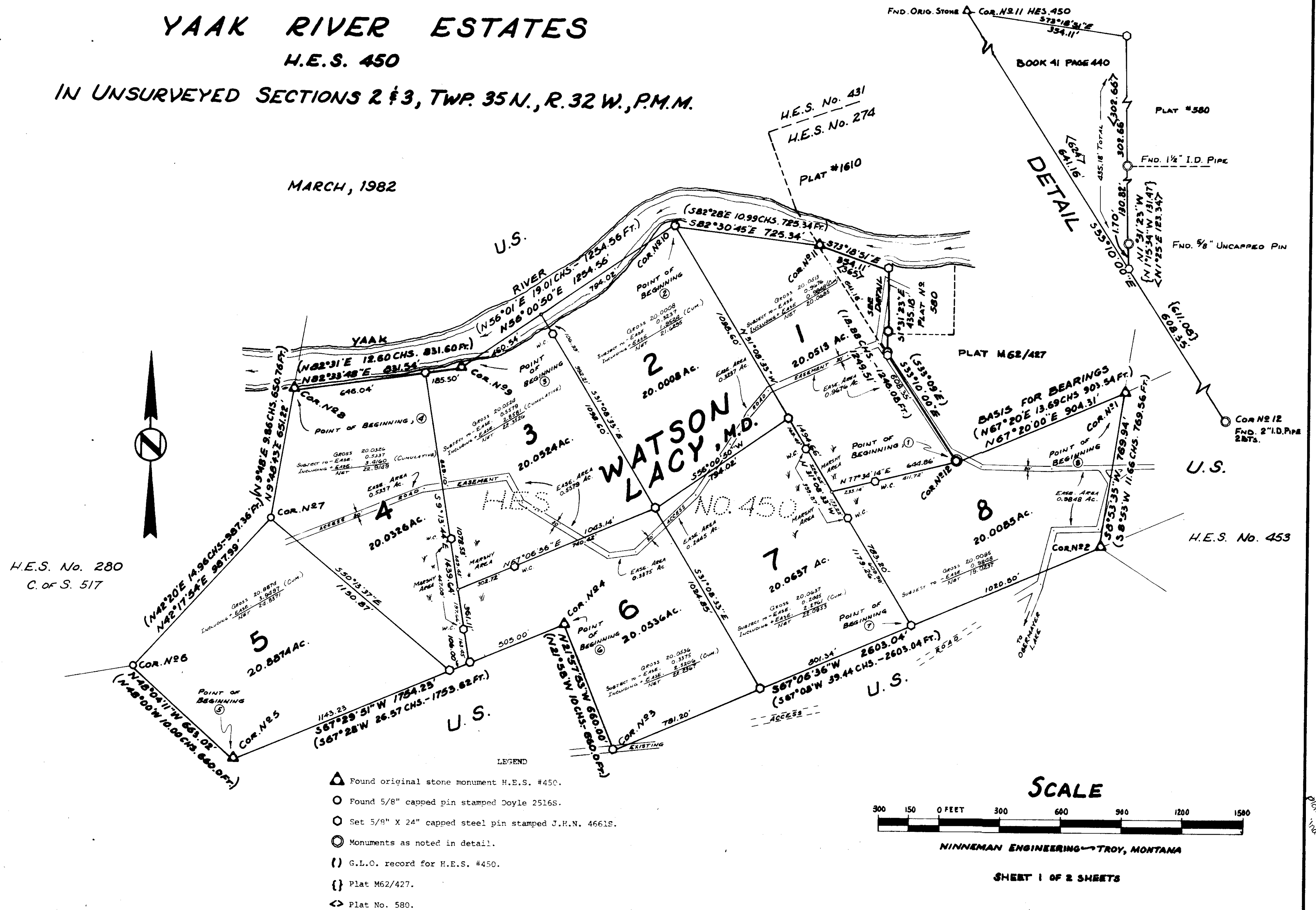
CERTIFICATE OF SURVEY

YAAK RIVER ESTATES

H.E.S. 450

IN UNSURVEYED SECTIONS 2 & 3, TWP. 35 N., R. 32 W., P.M.M.

MARCH, 1982



CERTIFICATE OF SURVEY

YAAK RIVER ESTATES

H.E.S. 450 - IN UNSURVEYED SECTIONS 2 & 3, TWP. 35 N., R. 32 W., P.M.M.

DESCRIPTION TRACT 1

An irregular tract of land near Yaak in Lincoln County, Montana, being a part of Homestead Entry Survey No. 450 and including a triangular parcel of land formerly part of H.E.S. No. 274, as shown in Book 41, Page 440 of the Lincoln County Records, containing 20.513 acres, more or less, and more particularly described as follows:

Beginning at a 5/8" iron pipe marking Corner No. 12 of H.E.S. No. 450; thence, S81°12'17"W 411.72 feet to a 5/8" capped steel pin stamped J.H.N. 4661S (hereinafter referred to as 'a 5/8" pin') set as a witness corner; thence, continuing S77°04'14"W 233.14 feet to a point; thence, N31°08'33"E 1024.66 feet to a 5/8" pin marking Corner No. 10 of said H.E.S. No. 450 on the South side of the Yaak River; thence, along the Southerly side of said Yaak River, S80°30'45"E 725.34 feet to the original stone marking Corner No. 1 of said H.E.S. No. 450; thence, S23°19'51"E 354.11 feet to a 5/8" pin at the Northeastly corner of a triangular parcel of land formerly part of H.E.S. No. 274, as shown in Book 41, Page 440 of the Lincoln County Records (also the Northwestly corner of that parcel shown on Plat No. 121); thence, along the West boundary of that parcel shown on said Plat No. 121, S11°12'03"E a total of 439.13 feet to a 5/8" pin on the Northeastly boundary of said H.E.S. No. 450; thence, along said North-easterly boundary S27°12'00"E 609.98 feet to the point of beginning.

Including an access roadway easement 30 feet in width, entering the aforedescribed tract near the Southeast corner, containing 0.9048 acre, more or less, as shown hereon.

Subject to an access roadway easement 30 feet in width, along the East-erly boundary and across the middle of the aforedescribed tract, contain-ing 0.9676 acre, more or less, as shown hereon.

DESCRIPTION TRACT 2

A rectangular tract of land near Yaak in Lincoln County, Montana, being a part of Homestead Entry Survey No. 450, contain-ing 20.0008 acres, more or less, and more particularly described as follows:

Beginning at a 5/8" capped steel pin stamped J.H.N. 4661S (hereinafter referred to as 'a 5/8" pin') marking Corner No. 10 of H.E.S. No. 450 on the Southerly side of the Yaak River; thence, S21°08'33"E 1024.66 feet to a 5/8" pin; thence, S67°06'36"W 740.42 feet to a 5/8" pin; thence, N31°08'33"E 1024.66 feet to a 5/8" pin set as a witness corner on the Southeastly bank of the Yaak River; thence, continuing N21°08'33"E 1024.66 feet to a point on said Yaak River; thence, N67°06'36"W 740.42 feet to the point of beginning.

Including an access roadway easement 30 feet in width, entering the aforedescribed tract near the Southeast corner, containing a cumulative total of 0.9048 acre, more or less, as shown hereon.

Subject to an access roadway easement 30 feet in width, near the Southeast corner of the aforedescribed tract, containing 0.9237 acre, more or less, as shown hereon.

DESCRIPTION TRACT 3

An irregular tract of land near Yaak in Lincoln County, Montana, being a part of Homestead Entry Survey No. 450, containing 20.3504 acres, more or less, and more particularly described as follows:

Beginning at the original stone monument marking Corner No. 9 of H.E.S. No. 450; thence, N56°06'36"E 441.72 feet to a point in the Yaak River; thence, S21°08'33"E 1024.66 feet to a 5/8" capped steel pin stamped J.H.N. 4661S (hereinafter referred to as 'a 5/8" pin'); thence, continuing S21°08'33"E 992.21 feet to a 5/8" pin; thence, S67°06'36"W 740.42 feet to a 5/8" pin set as a witness corner; thence, continuing S67°06'36"W 321.72 feet to a 5/8" pin; thence, N31°08'33"E 1024.66 feet to a 5/8" pin set as a witness corner; thence, continuing S67°06'36"W 740.42 feet to a 5/8" pin on the Southerly side of the Yaak River; thence, S27°12'00"E 609.98 feet to the point of beginning.

Including an access roadway easement 30 feet in width, entering the aforedescribed tract on the South line, containing a cumulative total of 2.9581 acres, more or less, as shown hereon.

Subject to an access roadway easement 30 feet in width, running from the South line to the West line of the aforedescribed tract, containing 0.9048 acre, more or less, as shown hereon.

DESCRIPTION TRACT 4

An irregular tract of land near Yaak in Lincoln County, Montana, being a part of Homestead Entry Survey No. 450, containing 20.0326 acres, more or less, and more particularly described as follows:

Beginning at the original stone monument marking Corner No. 8 of H.E.S. No. 450 on the South side of the Yaak River; thence, N82°33'48"E 931.54 feet to a 5/8" capped steel pin stamped J.H.N. 4661S (hereinafter referred to as 'a 5/8" pin') also on the South side of the Yaak River; thence, S9°13'44"E 829.10 feet to a 5/8" pin set as a witness corner; thence, continuing S9°13'44"E 447.09 feet to a 5/8" pin also set as a witness corner; thence, continuing S9°13'44"E 163.45 feet to a 5/8" pin; thence, S67°29'51"W 106.00 feet to a 5/8" pin; thence, N50°13'37"W 1150.87 feet to a 5/8" capped steel pin stamped Doyle 2516S, marking Corner No. 7 of said H.E.S. No. 450; thence, N9°48'43"E 651.22 feet to the point of beginning.

Including an access roadway easement 30 feet in width, entering the aforedescribed tract on the East line, containing a cumulative total of 3.4160 acres, more or less, as shown hereon.

Subject to an access roadway easement 30 feet in width, running across the middle of the aforedescribed tract, containing 0.5337 acre, more or less, as shown hereon.

DESCRIPTION TRACT 5

An irregular tract of land near Yaak in Lincoln County, Montana, being a part of Homestead Entry Survey No. 450, containing 20.8974 acres, more or less, and more particularly described as follows:

Beginning at the original stone monument marking Corner No. 5 of H.E.S. No. 450; thence, N48°04'11"W 663.02 feet to a 5/8" capped steel pin stamped Doyle 2516S, marking Corner No. 6 of said H.E.S. No. 450; thence, N42°17'54"E 987.99 feet to a 5/8" capped steel pin stamped Doyle 2516S, marking Corner No. 7 of said H.E.S. No. 450; thence, S50°13'37"E 1150.87 feet to a 5/8" capped steel pin stamped J.H.N. 4661S; thence, S67°29'51"W 1143.23 feet to the point of beginning.

Including an access roadway easement 30 feet in width, entering the aforedescribed tract near the Northerly corner, containing a cumulative total of 3.9497 acres, more or less, as shown hereon.

DESCRIPTION TRACT 6

An irregular tract of land near Yaak in Lincoln County, Montana, being a part of Homestead Entry Survey No. 450, containing 20.0536 acres, more or less, and more particularly described as follows:

Beginning at the original stone monument marking Corner No. 4 of H.E.S. No. 450; thence, S67°29'51"W 505.00 feet to a 5/8" capped steel pin stamped J.H.N. 4661S (hereinafter referred to as 'a 5/8" pin'); thence, N9°13'44"W 163.45 feet to a 5/8" pin set as a witness corner; thence, continuing N9°13'44"W 197.66 feet to a point; thence, N67°06'36"E 302.72 feet to a 5/8" pin set as a witness corner; thence, continuing N67°06'36"E 740.42 feet to a 5/8" pin; thence, S21°08'33"E 1024.85 feet to a 5/8" pin on the South-easterly boundary of said H.E.S. No. 450; thence, S67°06'36"W 741.20 feet to a 5/8" pin marking Corner No. 3 of said H.E.S. No. 450; thence, N21°08'53"W 660.00 feet to the point of beginning.

Including an access roadway easement 30 feet in width, entering the aforedescribed tract near the Northeast corner, containing a cumulative total of 2.5256 acres, more or less, as shown hereon.

Subject to an access roadway easement 30 feet in width, near the North-east corner of the aforedescribed tract, containing 0.3375 acre, more or less, as shown hereon.

DESCRIPTION TRACT 7

An irregular tract of land near Yaak in Lincoln County, Montana, being a part of Homestead Entry Survey No. 450, containing 20.0637 acres, more or less, and more particularly described as follows:

Beginning at a 5/8" capped steel pin stamped J.H.N. 4661S (hereinafter referred to as 'a 5/8" pin') on the Southeastly boundary of H.E.S. No. 450, which point lies S67°06'36"W 1020.50 feet from Corner No. 2 of said H.E.S. No. 450; thence, S67°06'36"W 801.34 feet to a 5/8" pin; thence, N31°08'33"W 1024.85 feet to a 5/8" pin; thence, N56°00'50"E 794.02 feet to a 5/8" pin; thence, S21°08'33"E 169.41 feet to a 5/8" pin set as a witness corner; thence, continuing S21°08'33"E 399.87 feet to a 5/8" pin set as a witness corner; thence, continuing S21°08'33"E 609.98 feet to the point of beginning.

Including an access roadway easement 30 feet in width, entering the aforedescribed tract on the North line, containing a cumulative total of 0.9048 acre, more or less, as shown hereon.

Subject to an access roadway easement 30 feet in width, near the North-west corner of the aforedescribed tract, containing 0.2445 acre, more or less, as shown hereon.

DESCRIPTION TRACT 8

An irregular tract of land near Yaak in Lincoln County, Montana, being a part of Homestead Entry Survey No. 450, containing 20.0085 acres, more or less, and more particularly described as follows:

Beginning at the original stone monument marking Corner No. 1 of H.E.S. No. 450; thence, S8°53'35"W 769.94 feet to the stone monument marking Corner No. 2 of said H.E.S. No. 450; thence, S67°06'36"W 1020.50 feet to a 5/8" capped steel pin stamped J.H.N. 4661S (hereinafter referred to as 'a 5/8" pin'); thence, N31°08'33"W 609.98 feet to a 5/8" pin set as a witness corner; thence, continuing N31°08'33"W 173.22 feet to a point; thence, N77°34'14"E 233.14 feet to a 5/8" pin set as a witness corner; thence, continuing N77°34'14"E 411.72 feet to a 2" I.D. pipe marking Corner No. 12 of said H.E.S. No. 450; thence, N67°20'00"E 904.31 feet to the point of beginning.

Subject to an access roadway easement 30 feet in width, along the East line and near the Northeast corner, containing 0.9843 acre, more or less, as shown hereon.

EXEMPTION CERTIFICATE/PURPOSE FOR SURVEY

The purpose of this division of land is to create irregular parcels greater than twenty (20) acres in size, and the subject parcels must be surveyed pursuant to Section 36-3-401, M.C.A.

Watson Lucy M.D. 4-30-82
Watson Lucy Date
The foregoing certificate was subscribed and sworn to before me this
4th day of April, 1982.
John M. Sniffen My Commission Expires Dec. 28, 1984
Notary Public in and for the state of Montana

BASIS OF BEARINGS

Bearings were based on the bearing of the line between Corner No. 12 and Corner No. 1 of Homestead Entry Survey No. 450, reported to bear N67°06'36"E as per G.L.O. records.

SHEET 2 OF 2 SHEETS

Ninneman Engineering
Troy, Montana



MARCH, 1982

APPROVED: Stephen D. Stank
Examining Land Surveyor
Date 4/11/82 Registration No. 5619-S
APPROVED: Jim R. Mow
Acting Chairman Board of Commissioners
ATTESTED: Elleanor L. Vaughan by Charles J. Hayden, Deputy
County Clerk and Recorder
Dated this 12th day of May, 1982

STATE OF MONTANA COUNTY OF LINCOLN
Filed on this 12th day of May, 1982
at 1:35 o'clock P.M.
Elleanor L. Vaughan
County Clerk and Recorder
by Patty Seel
Deputy

Certificate of Survey No. 1018

CERTIFICATE OF SURVEY

YAAK RIVER ESTATES

H.E.S. 450 - IN UNSURVEYED SECTIONS 2 & 3, TWP. 35 N., R. 32 W., P.M.M.

DESCRIPTION TRACT 1

An irregular tract of land near Yaak in Lincoln County, Montana, being a part of Homestead Entry Survey No. 450 and including a triangular parcel of land formerly part of H.E.S. No. 274, as shown in Book 41, Page 440 of the Lincoln County Records, containing 20.0513 acres, more or less, and more particularly described as follows:

Beginning at a 2" iron pipe marking Corner No. 12 of H.E.S. No. 450; thence, S77°34'14"W 411.72 feet to a 5/8" capped steel pin stamped J.H.N. 4661S (hereinafter referred to as 'a 5/8" pin') set as a witness corner; thence, continuing S77°34'14"W 233.14 feet to a point; thence, N31°08'33"W a total of 1494.66 feet to a 5/8" pin marking Corner No. 10 of said H.E.S. No. 450 on the South side of the Yaak River; thence, along the Southerly side of said Yaak River, S82°30'45"E 725.34 feet to the original stone marking Corner No. 11 of said H.E.S. No. 450; thence, S73°19'51"E 354.11 feet to a 5/8" pin at the Northeastly corner of a triangular parcel of land formerly part of H.E.S. No. 274, as shown in Book 41, Page 440 of the Lincoln County Records (also the Northwestly corner of that parcel shown on Plat No. 580); thence, along the West boundary of that parcel shown on said Plat No. 580, S1°31'23"E a total of 435.18 feet to a 5/8" pin on the Northeastly boundary of said H.E.S. No. 450; thence, along said North-easterly boundary S33°10'00"E 608.35 feet to the point of beginning;

Including an access roadway easement 30 feet in width, entering the afore described tract near the Southeast corner, containing 0.9848 acre, more or less, as shown hereon;

Subject to an access roadway easement 30 feet in width, along the East-erly boundary and across the middle of the aforedescribed tract, contain-ing 0.9676 acre, more or less, as shown hereon.

DESCRIPTION TRACT 2

A rectangular tract of land near Yaak in Lincoln County, Montana, being a part of Homestead Entry Survey No. 450, containing 20.0008 acres, more or less, and more particularly described as follows:

Beginning at a 5/8" capped steel pin stamped J.H.N. 4661S (hereinafter referred to as 'a 5/8" pin') marking Corner No. 10 of H.E.S. No. 450 on the Southerly side of the Yaak River; thence, S31°08'33"E 1098.60 feet to a 5/8" pin; thence, S56°00'50"W 794.02 feet to a 5/8" pin; thence, N31°08'33"W 992.21 feet to a 5/8" pin set as a witness corner on the Southeastly bank of the Yaak River; thence, continuing N31°08'33"W 106.39 feet to a point in said Yaak River; thence, N56°00'50"E 794.02 feet to the point of beginning;

Including an access roadway easement 30 feet in width, entering the aforedescribed tract near the Southeast corner, containing a cumulative total of 1.9524 acres, more or less, as shown hereon;

Subject to an access roadway easement 30 feet in width, near the Southeast corner of the aforedescribed tract, containing 0.3237 acre, more or less, as shown hereon.

DESCRIPTION TRACT 3

An irregular tract of land near Yaak in Lincoln County, Montana, being a part of Homestead Entry Survey No. 450, containing 20.0524 acres, more or less, and more particularly described as follows:

Beginning at the stone monument marking Corner No. 9 of H.E.S. No. 450; thence, N56°00'50"E 460.54 feet to a point in the Yaak River; thence, S31°08'33"E 106.39 feet to a 5/8" capped steel pin stamped J.H.N. 4661S (hereinafter referred to as 'a 5/8" pin'); thence, continuing S31°08'33"E 992.21 feet to a 5/8" pin; thence, S67°06'36"W 740.42 feet to a 5/8" pin set as a witness corner; thence, continuing S67°06'36"W 302.72 feet to a 5/8" pin; thence, N9°13'44"W 249.43 feet to a 5/8" pin set as a witness corner; thence, continuing N9°13'44"W 829.10 feet to a 5/8" pin on the Southerly side of the Yaak River; thence, N82°33'48"E 185.50 feet to the point of beginning;

Including an access roadway easement 30 feet in width, entering the aforedescribed tract on the South line, containing a cumulative total of 2.8581 acres, more or less, as shown hereon;

Subject to an access roadway easement 30 feet in width, running from the South line to the West line of the aforedescribed tract, containing 0.5575 acre, more or less, as shown hereon.

DESCRIPTION TRACT 4

An irregular tract of land near Yaak in Lincoln County, Montana, being a part of Homestead Entry Survey No. 450, containing 20.0326 acres, more or less, and more particularly described as follows:

Beginning at the original stone monument marking Corner No. 8 of H.E.S. No. 450 on the South side of the Yaak River; thence, N82°33'48"E 831.54 feet to a 5/8" capped steel pin stamped J.H.N. 4661S (hereinafter referred to as 'a 5/8" pin') also on the South side of the Yaak River; thence, S9°13'44"E 829.10 feet to a 5/8" pin set as a witness corner; thence, continuing S9°13'44"E 447.09 feet to a 5/8" pin also set as a witness corner; thence, continuing S9°13'44"E 163.45 feet to a 5/8" pin; thence, S67°29'51"W 106.00 feet to a 5/8" pin; thence, N50°13'37"W 1150.87 feet to a 5/8" capped steel pin stamped Doyle 2516S, marking Corner No. 7 of said H.E.S. No. 450; thence, N9°48'43"E 651.22 feet to the point of beginning;

Including an access roadway easement 30 feet in width, entering the aforedescribed tract on the East line, containing a cumulative total of 3.4160 acres, more or less, as shown hereon;

Subject to an access roadway easement 30 feet in width, running across the middle of the aforedescribed tract, containing 0.5337 acre, more or less, as shown hereon.

DESCRIPTION TRACT 5

An irregular tract of land near Yaak in Lincoln County, Montana, being a part of Homestead Entry Survey No. 450, containing 20.8874 acres, more or less, and more particularly described as follows:

Beginning at the original stone monument marking Corner No. 5 of H.E.S. No. 450; thence, N48°04'11"W 663.02 feet to a 5/8" capped steel pin stamped Doyle 2516S, marking Corner No. 6 of said H.E.S. No. 450; thence, N42°17'54"E 987.99 feet to a 5/8" capped steel pin stamped Doyle 2516S, marking Corner No. 7 of said H.E.S. No. 450; thence, S50°13'37"E 1150.87 feet to a 5/8" capped steel pin stamped J.H.N. 4661S; thence, S67°29'51"W 1143.23 feet to the point of beginning;

Including an access roadway easement 30 feet in width, entering the aforedescribed tract near the Northerly corner, containing a cumulative total of 3.9497 acres, more or less, as shown hereon.

DESCRIPTION TRACT 6

An irregular tract of land near Yaak in Lincoln County, Montana, being a part of Homestead Entry Survey No. 450, containing 20.0536 acres, more or less, and more particularly described as follows:

Beginning at the original stone monument marking Corner No. 4 of H.E.S. No. 450; thence, S67°29'51"W 505.00 feet to a 5/8" capped steel pin stamped J.H.N. 4661S (hereinafter referred to as 'a 5/8" pin'); thence, N9°13'44"W 163.45 feet to a 5/8" pin set as a witness corner; thence, continuing N9°13'44"W 197.66 feet to a point; thence, N67°06'36"E 302.72 feet to a 5/8" pin set as a witness corner; thence, continuing N67°06'36"E 740.42 feet to a 5/8" pin; thence, S31°08'33"E 1024.85 feet to a 5/8" pin on the South-easterly boundary of said H.E.S. No. 450; thence, S67°06'36"W 781.20 feet to a 5/8" pin marking Corner No. 3 of said H.E.S. No. 450; thence, N21°57'53"W 660.00 feet to the point of beginning;

Including an access roadway easement 30 feet in width, entering the aforedescribed tract near the Northeast corner, containing a cumulative total of 2.5206 acres, more or less, as shown hereon;

Subject to an access roadway easement 30 feet in width, near the North-east corner of the aforedescribed tract, containing 0.3375 acre, more or less, as shown hereon.

DESCRIPTION TRACT 7

An irregular tract of land near Yaak in Lincoln County, Montana, being a part of Homestead Entry Survey No. 450, containing 20.0637 acres, more or less, and more particularly described as follows:

Beginning at a 5/8" capped steel pin stamped J.H.N. 4661S (hereinafter referred to as 'a 5/8" pin') on the Southeastly boundary of H.E.S. No. 450, which point lies S67°06'36"W 1020.50 feet from Corner No. 2 of said H.E.S. No. 450; thence, S67°06'36"W 801.34 feet to a 5/8" pin; thence, N31°08'33"W 1024.85 feet to a 5/8" pin; thence, N56°00'50"E 794.02 feet to a 5/8" pin; thence, S31°08'33"E 169.41 feet to a 5/8" pin set as a witness corner; thence, continuing S31°08'33"E 399.87 feet to a 5/8" pin set as a witness corner; thence, continuing S31°08'33"E 609.98 feet to the point of beginning;

Including an access roadway easement 30 feet in width, entering the aforedescribed tract on the North line, containing a cumulative total of 2.2761 acres, more or less, as shown hereon;

Subject to an access roadway easement 30 feet in width, near the North-west corner of the aforedescribed tract, containing 0.2445 acre, more or less, as shown hereon.

DESCRIPTION TRACT 8

An irregular tract of land near Yaak in Lincoln County, Montana, being a part of Homestead Entry Survey No. 450, containing 20.0085 acres, more or less, and more particularly described as follows:

Beginning at the original stone monument marking Corner No. 1 of H.E.S. No. 450; thence, S8°53'35"W 769.94 feet to the stone monument marking Corner No. 2 of said H.E.S. No. 450; thence, S67°06'36"W 1020.50 feet to a 5/8" capped steel pin stamped J.H.N. 4661S (hereinafter referred to as 'a 5/8" pin'); thence, N31°08'33"W 609.98 feet to a 5/8" pin set as a witness corner; thence, continuing N31°08'33"W 173.22 feet to a point; thence, N77°34'14"E 233.14 feet to a 5/8" pin set as a witness corner; thence, continuing N77°34'14"E 411.72 feet to a 2" I.D. pipe marking Corner No. 12 of said H.E.S. No. 450; thence, N67°20'00"E 904.31 feet to the point of beginning;

Subject to an access roadway easement 30 feet in width, along the East line and near the Northeast corner, containing 0.9848 acre, more or less, as shown hereon.

EXEMPTION CERTIFICATE/PURPOSE FOR SURVEY

The purpose of this division of land is to create irregular parcels greater than twenty (20) acres in size, and the subject parcels must be surveyed pursuant to Section 36-3-401, M.C.A.

Watson Lacy, Notary Public, subscribed and sworn to before me this 4th day of May, 1982. My Commission Expires Dec. 28, 1984.

BASIS OF BEARINGS

Bearings were based on the bearing of the line between Corner No. 12 and Corner No. 1 of Homestead Entry Survey No. 450, reported to bear N67°20'E as per G.L.O. records.

SHEET 2 OF 2 SHEETS

Ninneman Engineering
Troy, Montana



MARCH, 1982

APPROVED: Stephen D. Stueb
Examining Land Surveyor
Date 4/11/82 Registration No. 5619-5

APPROVED: Jim R. Mow
Acting Chairman Board of Commissioners

ATTESTED: Eleanor L. Vaughn by Verdel L. Vaughn, Jr.
County Clerk and Recorder

Dated this 12th day of May, 1982

STATE OF MONTANA COUNTY OF LINCOLN

Filed on this 12th day of May, 1982
at 1:35 o'clock P.M.

Helene L. Vaughan
County Clerk and Recorder

by Deety Deel
Deputy

Certificate of Survey No. 1018