

SCALE



LINCOLN COUNTY, MONTANA

CERTIFICATE OF SURVEY

IN THE E 1/2 NE 1/4 OF SECTION 30 TWP. 31N., R. 33W., P.M.M. APRIL, 1982

DESCRIPTION COUNTY ROAD R/W

An irregular tract of land near Troy in Lincoln County, Montana, being a County Road right of way along the existing Lake Creek Road, lying wholly within the E 1/2 NE 1/4 of Section 30, Twp. 31N., R. 33W., P.M.M., containing 5.681 acres, more or less, and more particularly described as follows:

Beginning at a 5/8" capped steel pin stamped J.H.N. 4661S (hereinafter referred to as 'a 5/8" pin') at the intersection of the North line of Section 30, Twp. 31N., R. 33W., P.M.M. and the Easterly right of way line of Lake Creek Road, which point lies N89°43'13"W 659.15 feet from the NE corner of said Section 30; thence, along the arc of a curve to the right, having a radius of 1445.0 feet, turning through an angle of 3°02'24" a distance of 76.67 feet to a 5/8" pin; thence, along the arc of a curve to the right, having a radius of 845.0 feet, turning through an angle of 9°18'08" a distance of 137.19 feet to a 5/8" pin; thence, S22°09'16"E 476.38 feet to a 5/8" pin; thence, along the arc of a curve to the right, having a radius of 608.0 feet, turning through an angle of 22°22'32" a distance of 237.44 feet to a 5/8" pin; thence, S0°13'16"W 96.37 feet to a 5/8" pin; thence, along the arc of a curve to the left, having a radius of 705.0 feet, turning through an angle of 11°09'39" a distance of 137.33 feet to a 5/8" pin; thence, S10°56'23"E 126.56 feet to a 5/8" pin; thence, along the arc of a curve to the left, having a radius of 760.0 feet, turning through an angle of 47°17'28" a distance of 627.29 feet to a 5/8" pin; thence, S36°21'05"W 84.85 feet to a 5/8" pin; thence, S53°38'55"E 120.0 feet to a 5/8" pin, where the total right of way width is 180.0 feet; thence, along the arc of a curve to the left, having a radius of 320.0 feet, turning through an angle of 34°27'42" a distance of 192.47 feet to a 5/8" pin; thence, S1°53'23"W 127.06 feet to a 5/8" pin; thence, along the arc of a curve to the right, having a radius of 1050.0 feet, turning through an angle of 12°19'25" a distance of 225.84 feet to a 5/8" pin; thence, S14°12'48"W 67.39 feet to a 5/8" pin; thence, along the arc of a curve to the left, having a radius of 850.0 feet, turning through an angle of 0°02'25" a distance of 0.60 feet to a 5/8" pin on the East/West C₄ line of said Section 30; thence, along said C₄ line N89°31'24"W 184.32 feet to a 5/8" pin on the Westerly right of way line of said Lake Creek Road; thence, along the arc of a curve to the right, having a radius of 1030.0 feet, turning through an angle of 2°28'07" a distance of 44.38 feet to a 5/8" pin; thence, N14°12'48"E 67.39 feet to a 5/8" pin; thence, along the arc of a curve to the left, having a radius of 870.0 feet, turning through an angle of 12°19'25" a distance of 187.13 feet to a 5/8" pin; thence, N1°53'23"E 127.06 feet to a 5/8" pin; thence, along the arc of a curve to the right, having a radius of 500.0 feet, turning through an angle of 34°27'42" a distance of 300.73 feet to a 5/8" pin; thence, N36°21'05"E 84.85 feet to a 5/8" pin; thence, along the arc of a curve to the left, having a radius of 700.0 feet, turning through an angle of 47°17'28" a distance of 577.77 feet to a 5/8" pin; thence, N10°56'23"W 126.56 feet to a 5/8" pin; thence, along the arc of a curve to the right, having a radius of 765.0 feet, turning through an angle of 11°09'39" a distance of 149.02 feet to a 5/8" pin; thence, N0°13'16"E 96.37 feet to a 5/8" pin; thence, along the arc of a curve to the left, having a radius of 548.0 feet, turning through an angle of 22°22'32" a distance of 214.01 feet to a 5/8" pin; thence, N22°09'16"W 476.38 feet to a 5/8" pin; thence, along the arc of a curve to the left, having a radius of 785.0 feet, turning through an angle of 9°18'08" a distance of 127.45 feet to a 5/8" pin; thence, N31°27'24"W 130.33 feet to a 5/8" pin; thence, along the arc of a curve to the left, having a radius of 1385.0 feet, turning through an angle of 4°46'56" a distance of 115.60 feet to a 5/8" pin on the North line of said Section 30; thence, along said North line, S89°43'13"E 73.83 feet to the point of beginning.

5.681 Acres TOTAL

EXEMPTION CERTIFICATE/PURPOSE FOR SURVEY

The purpose for this survey is to retrace or establish boundaries of existing rights-of-way of record along Lake Creek Road in the NE 1/4 of Section 30, Twp. 31N., R. 33W., P.M.M. Due to discrepancies between deeded rights-of-way, previous survey data, and the actual, present location of the road on the ground, a re-survey of the subject portion of Lake Creek Road was performed. This survey and the subsequent Certificate are meant to amend that portion of the right-of-way through the said NE 1/4 of Section 30, which has been shown or described in three parts:

- (1) Deed, Book 58, Page 584
- (2) Deed, Book 58, Page 585, amended by C. of S. 807
- (3) Lincoln County Road Retracement, Sheet 8, 1973, on file in the Lincoln County Court-house.

Since the survey was performed for County right-of-way purposes, neither subdivision nor sanitary review is required.

BASIS FOR BEARINGS

Bearings were based on the bearing of the South half of the West line of Section 30, Twp. 31N., R. 33W., P.M.M., reported to bear N0°00'09"W as per C. of S. 807.

LEGEND

- Set 5/8" X 24" capped steel pin stamped J.H.N. 4661S.
- Set P.K. Nail, or otherwise as noted.
- () Record per G.L.O.
- [] Record per C. of S. 807.

NINNEMAN ENGINEERING
TROY, MONTANA

Jack H. Ninne

APPROVED: *Steve D. Stank*
Examining Land Surveyor
Registration No. 5625

APPROVED: *Jim R. May*
Acting Chairman Board of Commissioners

TESTED: *Edward H. ...*
County Clerk and Recorder

Dated this 12th day of May, 1982

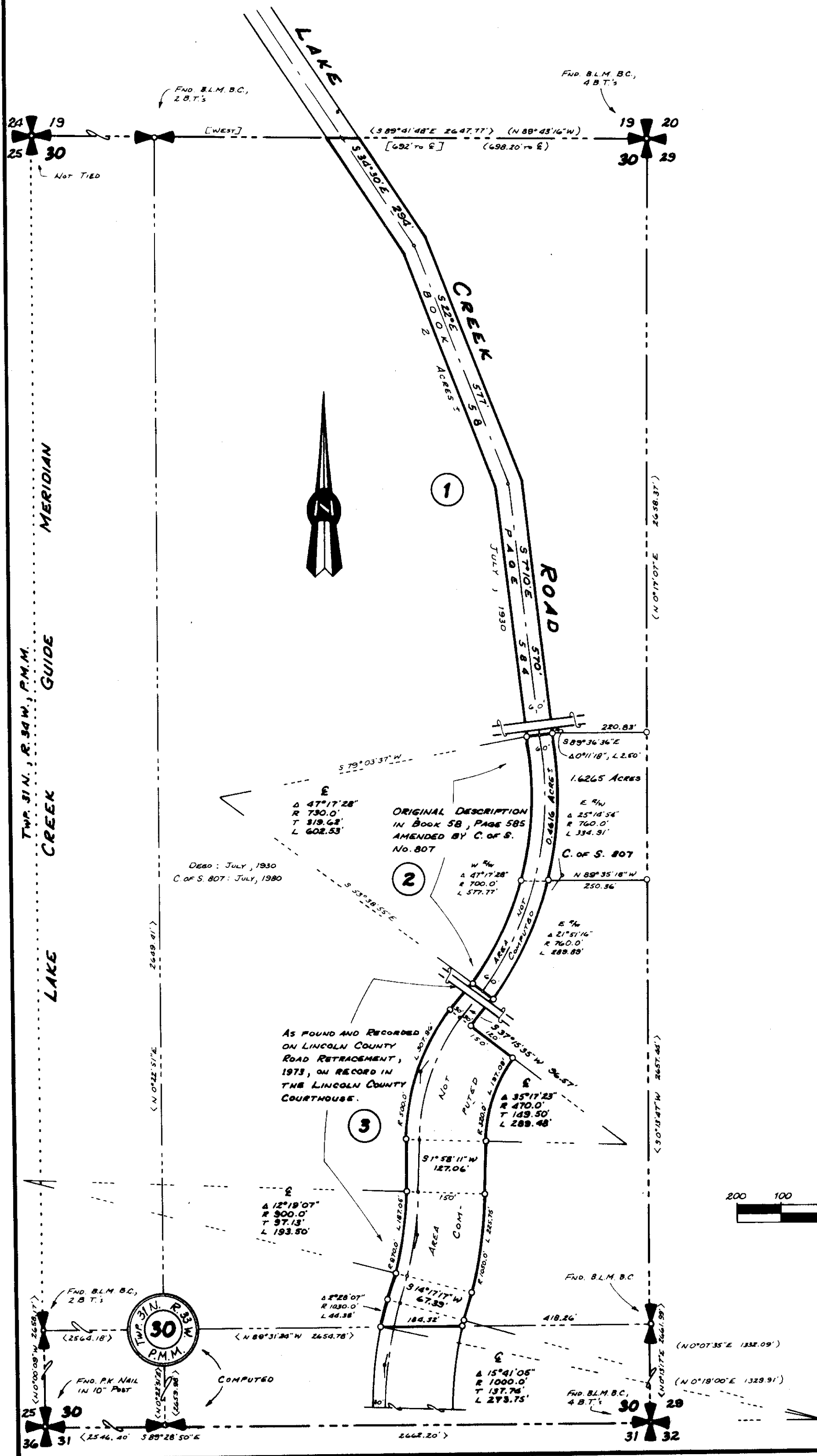
SHEET 1 OF 2 SHEETS

CERTIFICATE OF SURVEY

IN THE E 1/2 NE 1/4 OF SECTION 30,
TWP. 31 N., R. 33 W., P.M.M.

APRIL, 1982

LAKE CREEK ROAD RECORD INFORMATION PRIOR TO THIS SURVEY



LEGEND

- o 5/8" X 24" capped steel pin stamped JHN 4661S
- [] Record as per Deed, Book 58, Page 584
- < > Record as per C. of S. 807
- () Record as per Lincoln County Road Retracement, Sheet 8, 1973

NOTE

This sheet (2) is included to show the record information existing for Lake Creek Road in the NE 1/4 of Section 30, Twp. 31 N., R. 33 W., P.M.M. There are discrepancies in bearings and distances, and no common Basis of Bearings, so none is shown.

Ninneman Engineering

Troy, Montana

SCALE



SHEET 2 OF 2 SHEETS

STATE OF MONTANA COUNTY OF LINCOLN

Filed on this 12th day of May, 1982
at 1:30 o'clock P.M.

APPROVED: *Stephen D. Staab*
Examining Land Surveyor
Date 5-2-82 Registration No. 56125

Debra L. Vaughn
County Clerk and Recorder

APPROVED: *Jim R. Morey*
Acting Chairman Board of Commissioners

by *Betty Bell*
Deputy

ATTESTED: *Blanche Vaughn* by *Verde L. Hughes*
County Clerk and Recorder

Dated this 12 day of May, 1982

Certificate of Survey No. 1017