

# CERTIFICATE OF SURVEY

## RETRACEMENT AND SUBDIVISION

### SEC. 3, T. 35 N., R. 26 W., P.M.M.

LINCOLN COUNTY, MONTANA

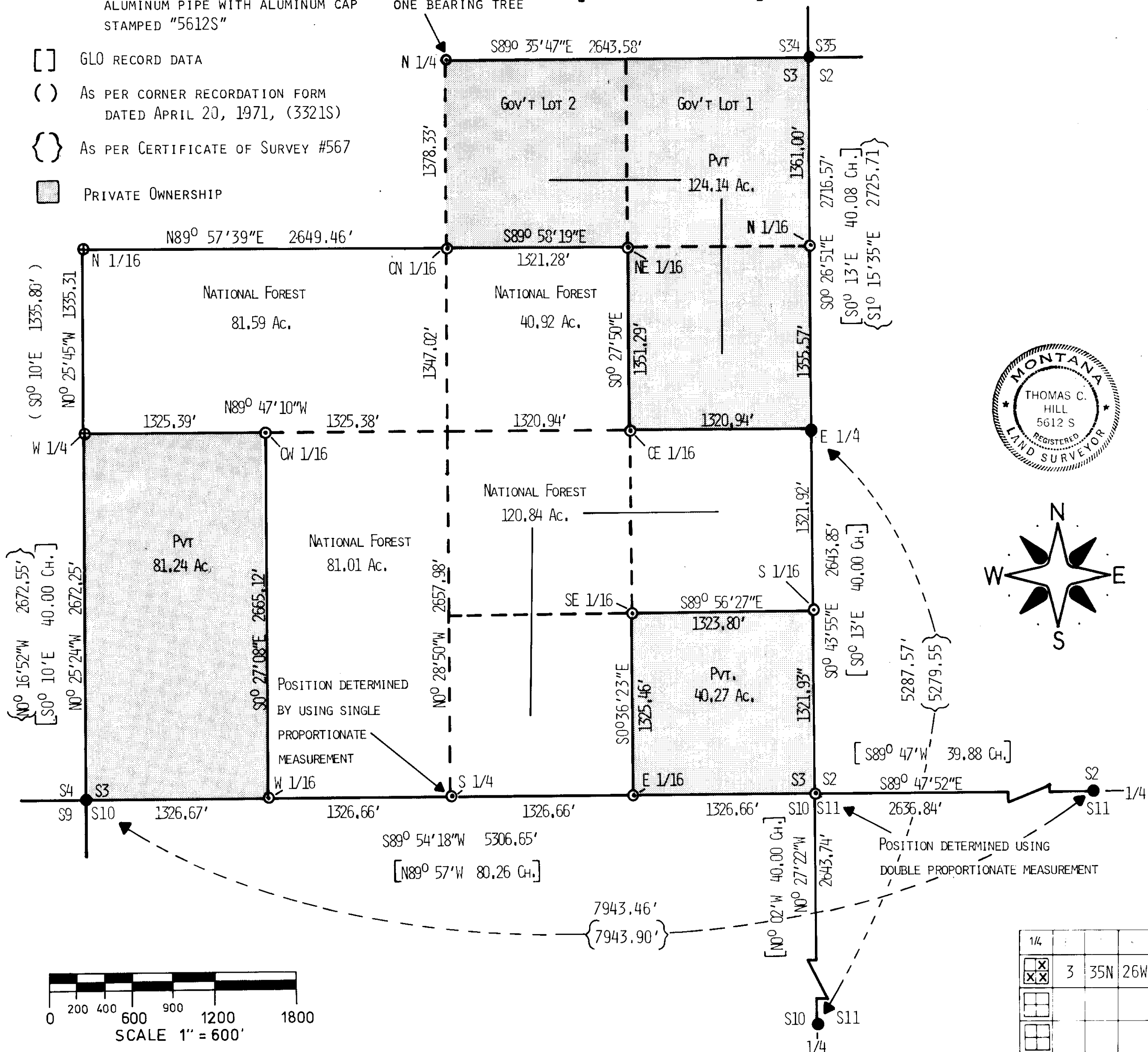
JUNE 1980

#### LEGEND:

- ⊕ IRON PIPE WITH BRASS CAP (3321S)
- IRON PIPE WITH BRASS CAP (BLM)
- MONUMENT SET THIS SURVEY 2 1/2 INCH ALUMINUM PIPE WITH ALUMINUM CAP STAMPED "5612S"
- [ ] GLO RECORD DATA
- ( ) AS PER CORNER RECORDATION FORM DATED APRIL 20, 1971, (3321S)
- { } AS PER CERTIFICATE OF SURVEY #567
- ▨ PRIVATE OWNERSHIP

FOUND ORIGINAL  
CORNER TREE AND  
ONE BEARING TREE

[S89° 52'W 40.00 Ch.]



#### NOTES AND LEGAL DESCRIPTION:

THIS PLAT REPRESENTS A RETRACEMENT AND SUBDIVISION OF SECTION 3, TOWNSHIP 35 NORTH, RANGE 26 WEST, PRINCIPAL MERIDIAN MONTANA. REFERENCE SHOULD BE MADE TO THE ORIGINAL NOTES AND PLAT DATED SEPTEMBER 1894 AND MAY 1895.

PURPOSE OF THIS SURVEY IS TO RETRACE AND MARK THE LINE OF RECORD BETWEEN PRIVATE AND NATIONAL FOREST LANDS; NATIONAL FOREST LANDS BEING LEGALLY DESCRIBED AS: SW1/4 NE1/4, S1/2 NW1/4, E1/2 SW1/4, N1/2 SE1/4, SW1/4 SE1/4, SECTION 3, TOWNSHIP 35 NORTH, RANGE 26 WEST, PMM.

THIS SURVEY WAS COMPLETED USING CONVENTIONAL METHODS IN EXCEEDING THIRD ORDER CLASS II ACCURACY STANDARDS. THE FIELD NOTES, PHOTOGRAPHY, AND COMPUTATIONS ARE FILED WITH U.S.D.A., FOREST SERVICE, KOOTENAI NATIONAL FOREST, SUPERVISOR'S OFFICE, LIBBY, MONTANA.

THE BASIS OF BEARING WAS DETERMINED BY SOLAR OBSERVATION.

THIS SURVEY WAS DONE AT THE REQUEST OF THE FORTINE DISTRICT RANGER, KOOTENAI NATIONAL FOREST.

#### SURVEYOR'S NOTE:

THE SECTION SHOWN HEREON WAS PREVIOUSLY SUBDIVIDED AS PER CERTIFICATE OF SURVEY NO. 567. A DISCREPANCY WAS FOUND IN THE POSITION OF THE N 1/4; IN THE POSITION OF THE SOUTHEAST CORNER; AND SUBSEQUENT CORNERS AFFECTED BY THESE DISCREPANCIES.

CORNER MONUMENTS FOUND AND DIFFERENCES IN THE ABOVE NOTED POSITIONS ARE SHOWN ON CORNER RECORDATION FORMS, FOR EACH AFFECTED CORNER, ON FILE IN THE LINCOLN COUNTY COURTHOUSE.

#### CERTIFICATE:

I HEREBY CERTIFY THAT I AM A REGISTERED LAND SURVEYOR IN THE STATE OF MONTANA; THAT THE SURVEY SHOWN ON THIS PLAT HAS BEEN PREPARED IN ACCORDANCE WITH THE MONTANA CODE ANNOTATED (SECTIONS 76-3-101 THROUGH 76-3-613) AND THE LINCOLN COUNTY REGULATIONS ADOPTED PURSUANT THERETO.

*Thomas C. Hill*

MONTANA REGISTRATION NO. 5612-S

#### CERTIFICATE OF EXAMINING LAND SURVEYOR

Approved by Bill day Nov. 1980 A.D.

Bill day 1974-8  
Examined Land Surveyor Reg. No.

APPROVED Bill  
Acting Chairman County Commissioners

#### CERTIFICATE OF CLERK RECORDER

State of Montana County of Lincoln filed the 10th

day of December 1980 A.D. at 1:10 o'clock P.M.

Charles L. Vaughn by Betty Lee  
County Clerk Recorder Deputy

CERTIFICATE OF SURVEY NUMBER 855

included plat