

ORIGINAL H.E.S. 1238 BEARINGS & DISTANCES

CORNERS	BEARINGS	DISTANCES
1-2	N89°41'W	13.00 chains
2-3	N20°46'W	11.71 chains
3-12	N44°31'W	197 links
12-13	N44°31'W	19.73 chains
13-14	N13°17'W	11.06 chains
14-15	N 0°04'E	12.98 chains
15-16	S89°46'E	5.02 chains
16-17	N 0°06'E	15.09 chains
17-18	S89°46'E	7.05 chains
18-5	S89°46'E	100 links
5-6	S89°46'E	12.04 chains
6-7	S 0°11'W	5.03 chains
7-CN 1/16	S89°46'E	10.04 chains
CN 1/16-C4	N 0°14'E	20.12 chains
C4-11	N 0°14'E	10.03 chains
11-S4	S 0°14'W	30.11 chains
CN 1/16-N4	N 0°14'E	20.12 chains
N4-C4	S89°47'E	40.08 chains
C4-E4	S89°47'E	39.86 chains

PREPARED BY
FLATHEAD LAND CONSULTANTS
M. L. HAIGES, RLS
BLUE CROSS BUILDING ROOM 201
P. O. BOX 572
KALISPELL, MONTANA 59901
257-2202

PREPARED FOR
U. S. FOREST SERVICE

JUNE 1980

CERTIFICATE OF SURVEY

LOCATED IN SECTION 11, T33N, R34W, PM.M, LINCOLN COUNTY, MONTANA

DESCRIPTION - PRIVATE

SET BRASS TABLET IN STONE
FOR QUARTER SECTION CORNER
AS PER CORNER RECORD

TRACT A, B, AND C OF HOMESTEAD ENTRY SURVEY NUMBER 1238,
SOUTHEAST QUARTER OF THE NORTHWEST QUARTER, NORTH HALF OF
THE NORTHEAST QUARTER OF THE SOUTHWEST QUARTER, AND THE
NORTHWEST QUARTER OF THE NORTHWEST QUARTER OF THE SOUTHEAST
QUARTER OF SECTION 11, TOWNSHIP 33 NORTH, RANGE 34 WEST,
PRINCIPAL MERIDIAN, MONTANA, LINCOLN COUNTY, MONTANA.

BASIS OF BEARINGS: FROM THE SOUTH QUARTER CORNER OF SECTION
11 TO CORNER NUMBER 2 OF HOMESTEAD ENTRY SURVEY NUMBER 1238,
TAKEN AS N89°49'16"W.

THIS TRACT CONTAINS 187.373 ACRES.

DESCRIPTION - U. S. GOVERNMENT

SOUTHEAST QUARTER OF SECTION 11 EXCEPTING THEREFROM THE NORTHWEST
QUARTER OF THE NORTHWEST QUARTER OF THE SOUTHEAST QUARTER OF
SECTION 11, TOWNSHIP 33 NORTH, RANGE 34 WEST, PRINCIPAL MERIDIAN,
MONTANA, LINCOLN COUNTY, MONTANA.

BASIS OF BEARINGS: FROM THE SOUTH QUARTER CORNER OF SECTION
11 TO CORNER NUMBER 2 OF HOMESTEAD ENTRY SURVEY NUMBER 1238,
TAKEN AS N89°49'16"W.

THIS TRACT CONTAINS 150.890 ACRES.

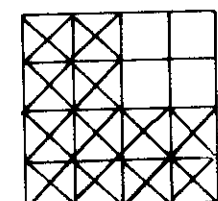
PURPOSE OF SURVEY: TO MAKE A DEPENDENT
RESURVEY AND TO RECOVER OR RESTORE ALL
PUBLIC LAND SURVEY CORNER MONUMENTS IN
THEIR ORIGINAL POSITION AND TO PROVIDE
A SURVEY TO DELINEATE FEDERAL AND PRIVATE
LANDS, AS INDICATED HEREON. THIS IS
NOT A DIVISION OF LAND.

ORIGINAL G. L. O. SURVEY CONDUCTED FROM
JULY 14, 1903 TO JULY 18, 1903. BY ALLEN
B. BENEDICT.
HOMESTEAD ENTRY SURVEY NUMBER 1238 WAS
CONDUCTED FROM OCTOBER 11, 1927 TO OCTOBER
17, 1927, BY A. O. MODIN.

METHOD OF SURVEY - RANDOM TRAVERSE USING
T-2 WILD THEODOLITE AND
HP 300 E.D.M.

MEAN MAGNETIC
DECLINATION FOR
THIS AREA IS 21°E.

SET BRASS CAP MONUMENT FOR
QUARTER SECTION CORNER AS
PER CORNER RECORD



SCALE 1" = 400'

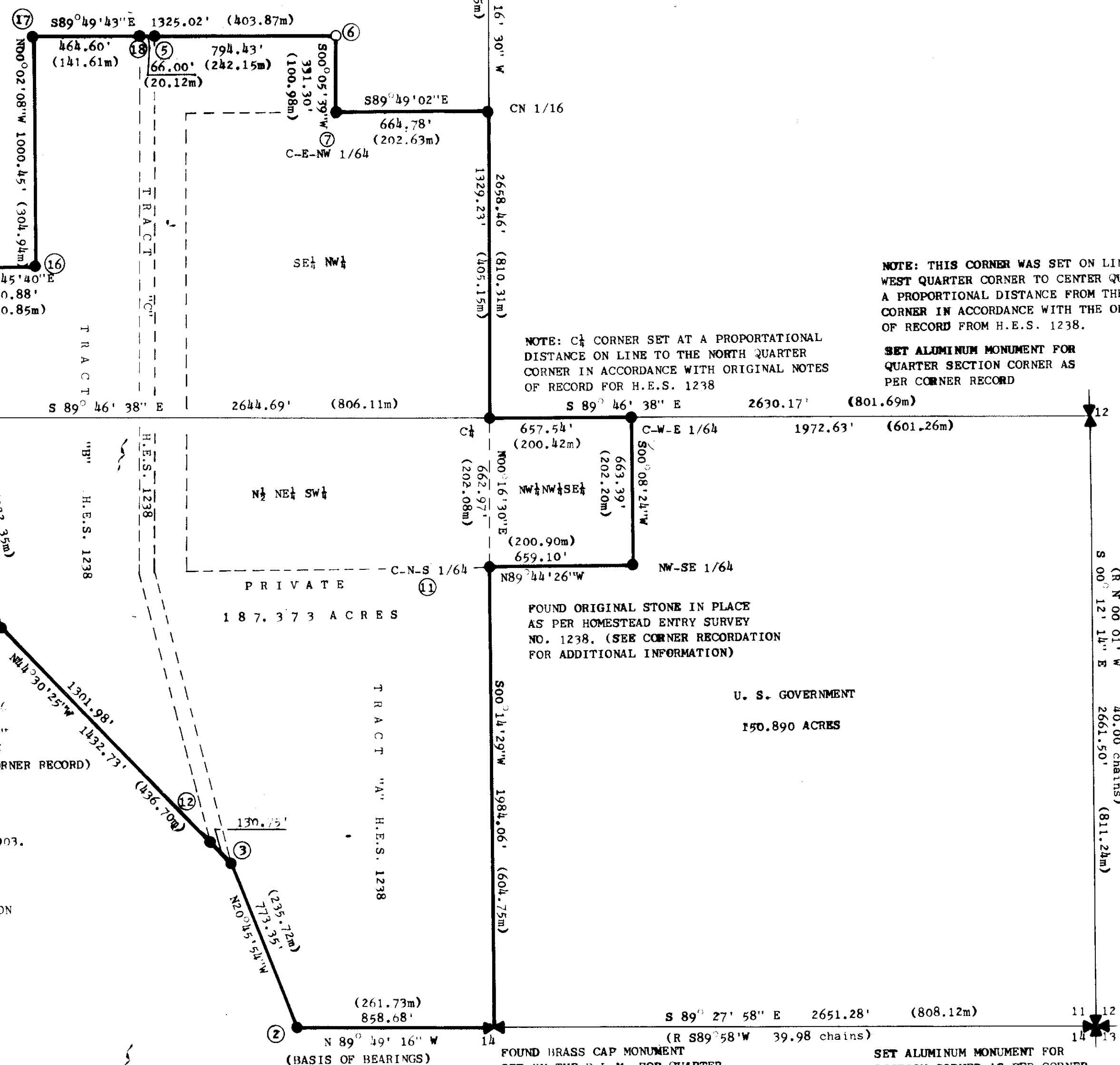
- FOUND ORIGINAL BRASS CAP MONUMENT FOR
CORNER 6 HES 1238 MARKED 6HES 1238 1/25'
- SET 2 1/4" X 30" ALUMINUM MONUMENT WITH 3 1/4"
CAP FOR HOMESTEAD CORNER OR SUBDIVISION
CORNER AS NOTED (SET OR RESET AS PER CORNER RECORD)
- HOMESTEAD CORNER NUMBER

(R) RECORD BEARING AND DISTANCE FROM
ORIGINAL G.L.O. NOTES DATED JULY 14, 1903.

(M) METERS

BASIS OF BEARINGS FROM SOLAR OBSERVATION
DATED OCTOBER 3, 1979.

R. W. Lindsey
CHAIRMAN
LINCOLN COUNTY COMMISSIONERS



NOTE: THIS CORNER WAS SET ON LINE FROM THE
WEST QUARTER CORNER TO CENTER QUARTER CORNER
A PROPORTIONAL DISTANCE FROM THE CENTER QUARTER
CORNER IN ACCORDANCE WITH THE ORIGINAL NOTES
OF RECORD FROM H.E.S. 1238.

SET ALUMINUM MONUMENT FOR
QUARTER SECTION CORNER AS
PER CORNER RECORD

NOTE: C4 CORNER SET AT A PROPORTIONAL
DISTANCE ON LINE TO THE NORTH QUARTER
CORNER IN ACCORDANCE WITH ORIGINAL NOTES
OF RECORD FOR H.E.S. 1238

FOUND ORIGINAL STONE IN PLACE
AS PER HOMESTEAD ENTRY SURVEY
NO. 1238. (SEE CORNER RECORDATION
FOR ADDITIONAL INFORMATION)

U. S. GOVERNMENT

150.890 ACRES

APPROVED:

Allen B. Benedict
EXAMINING LAND SURVEYOR
REGISTRATION NO. 4974-S

STATE OF MONTANA) SS.
COUNTY OF LINCOLN)

FILED ON THE 23rd DAY OF July
1980, AT 2:05 O'CLOCK P.M.

Edna L. Taugher
COUNTY CLERK AND RECORDER
BY *Betty Bell*
DEPUTY

DEED BOOK _____ PAGE _____
INSTRUMENT REC. NO. _____
CERTIFICATE OF SURVEY NO. 808

Indexed Platted