

# CERTIFICATE OF SURVEY

## RETRACEMENT AND PARTIAL SUBDIVISION OF

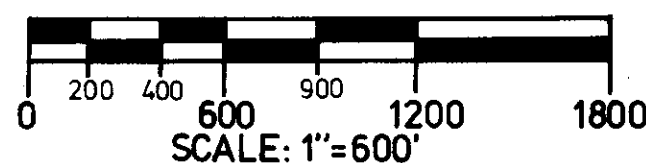
### SECTION 28, TOWNSHIP 32 NORTH, RANGE 29 WEST

### PRINCIPAL MERIDIAN MONTANA,, LINCOLN COUNTY

### JUNE 1979

#### LEGEND:

- ⊗ FOUND BRASS CAP
- CORNER ESTABLISHED OR RE-ESTABLISHED BY THIS SURVEY
- ▨ PRIVATE OWNERSHIP
- (M) METER EQUIVALENT
- (REC) GENERAL LAND OFFICE RECORD



#### NOTES:

- A - 335.30' (102.20M)
- B - 332.65' (101.39M)
- C - S89°51'10"E 549.92' (167.62M)
- D - 766.28' (233.56M)
- E - N18°13'55"E 144.03' (43.90M)
- F - Δ=0°47'53" R=1245.92' T=8.68' L=17.35'
- G - N32°01'52"E 109.65' (33.42M)
- H - Δ=25°51'07" R=1225.92' T=281.35' L=553.13'
- I - N49°52'53"E 431.24' (131.44M)
- J - 355.68' (108.41M)

#### NOTES:

THIS REPRESENTS A RETRACEMENT AND PARTIAL SUBDIVISION OF SECTION 28, TOWNSHIP 32 NORTH, RANGE 29 WEST. REFERENCE SHOULD BE MADE TO NOTES AND PLAT DATED MARCH 1901.

PURPOSE OF THIS SURVEY IS TO RETRACE AND LOCATE THE LINE OF RECORD BETWEEN PRIVATE LANDS AND U.S. GOVERNMENT LANDS.

THIS SURVEY WAS DONE BY THE LASER RANGE POLE IN COMBINATION WITH CONVENTIONAL SURVEY METHODS. THE FIELD NOTES AND COMPUTATIONS ARE FILED WITH THE U.S.D.A. FOREST SERVICE, KOOTENAI NATIONAL FOREST, SUPERVISOR'S OFFICE, LIBBY, MONTANA. THE BEARINGS ARE BASED ON THE TRUE BEARING OF N0°06'32" E BETWEEN THE EAST 1/4 CORNER AND THE NORTHEAST SECTION CORNER OF SECTION 28 AS DETERMINED BY THE CORPS OF ENGINEERS PLAT, KOOTENAI RESERVOIR 1961.

ALL MONUMENTS SET ARE 2-1/2"x 30" ALUMINUM PIPES WITH ALUMINUM CAPS. FOR CORNER INFORMATION SEE THE RECORDATION FILES IN LINCOLN COUNTY COURTHOUSE, LIBBY, MONTANA.

THIS SURVEY WAS DONE AT THE REQUEST OF THE FISHER RIVER DISTRICT RANGER, KOOTENAI NATIONAL FOREST.

#### DESCRIPTION:

A PARCEL OF LAND IN SECTION 28, T32N, R29W, PMM. MORE FULLY DESCRIBED AS FOLLOWS: N1/2 N1/2 NW 1/4, N1/2 NW 1/4 NE 1/4, N1/2 S1/2 NW 1/4 NE 1/4, NE 1/4 NE 1/4 LESS TRACT 800-1, BOOK 4, PAGE 364, LINCOLN COUNTY RECORDS, CONTAINING 100.30 ACRES, MORE OR LESS.

#### CERTIFICATE:

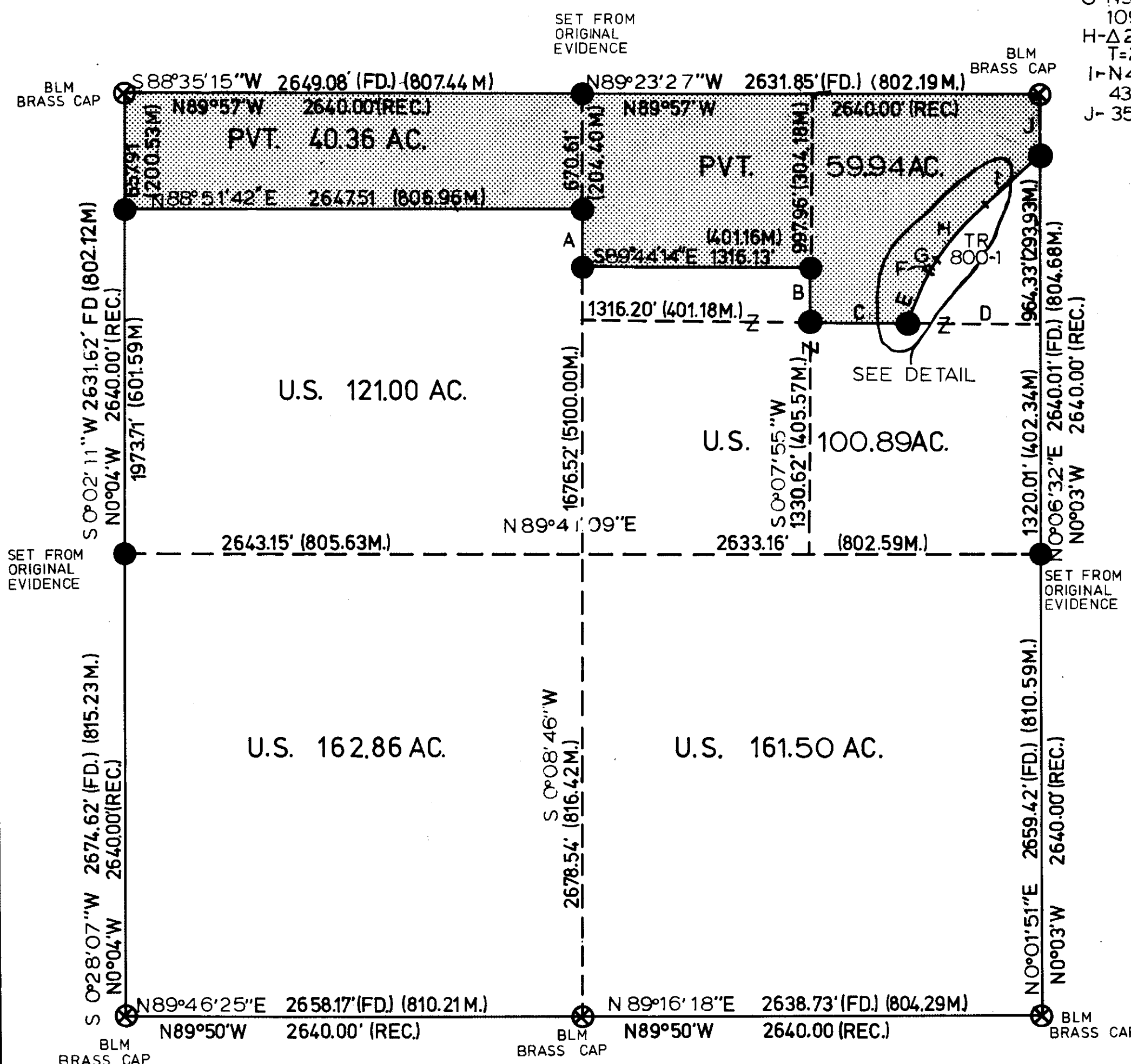
I HEREBY CERTIFY THAT I AM A REGISTERED LAND SURVEYOR IN THE STATE OF MONTANA; THAT THE SURVEY SHOWN ON THIS PLAT HAS BEEN PREPARED IN ACCORDANCE WITH THE MONTANA CODE ANNOTATED (SECTIONS 76-3-101 THROUGH 76-3-614 1979) AND THE LINCOLN COUNTY REGULATIONS ADOPTED PURSUANT THERETO.

Stanley J. Skousen  
STANLEY J. SKOUSEN  
MONTANA REGISTRATION NO. 25325

APPROVED Melvin D. Butcher Reg. No. 4232-5  
EXAMINING LAND SURVEYOR  
DATE 3/4/80

1/4	SEC.	T.	R.
⊗	28	32N	29W

APPROVED: R. W. Lindsey CHAIRMAN, COUNTY COMMISSIONERS  
CERTIFICATE OF CLERK RECORDER  
STATE OF MONTANA COUNTY OF Lincoln FILED THIS 19th  
DAY OF March, 1980 A.D. AT 3:10 O'CLOCK P.M.  
Deane L. Taughb COUNTY CLERK RECORDER BY Betty Bae DEPUTY  
CERTIFICATE OF SURVEY NUMBER 759  
LINCOLN COUNTY, MONTANA



INDEXED Platted