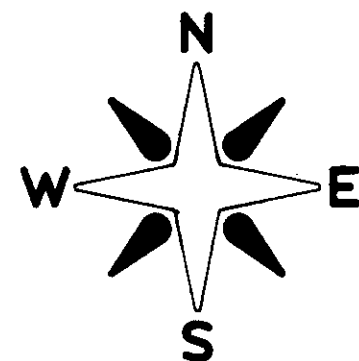
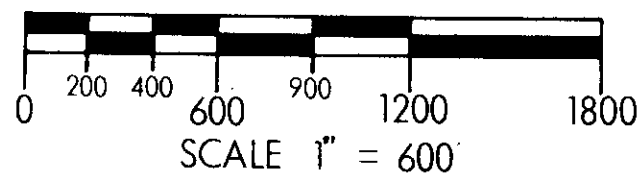


CERTIFICATE OF SURVEY

RETRACEMENT AND SUBDIVISION OF SECTION 5, TOWNSHIP 30 NORTH, RANGE 30 WEST PRINCIPAL MERIDIAN MONTANA AUGUST 1979

LEGEND:

- ⊗ FOUND BRASS CAP
- CORNER ESTABLISHED OR RE-ESTABLISHED BY THIS SURVEY
- ▒ PRIVATE OWNERSHIP
- (M) METER EQUIVALENT
- (REC) G.L.O. RECORD



NOTES:

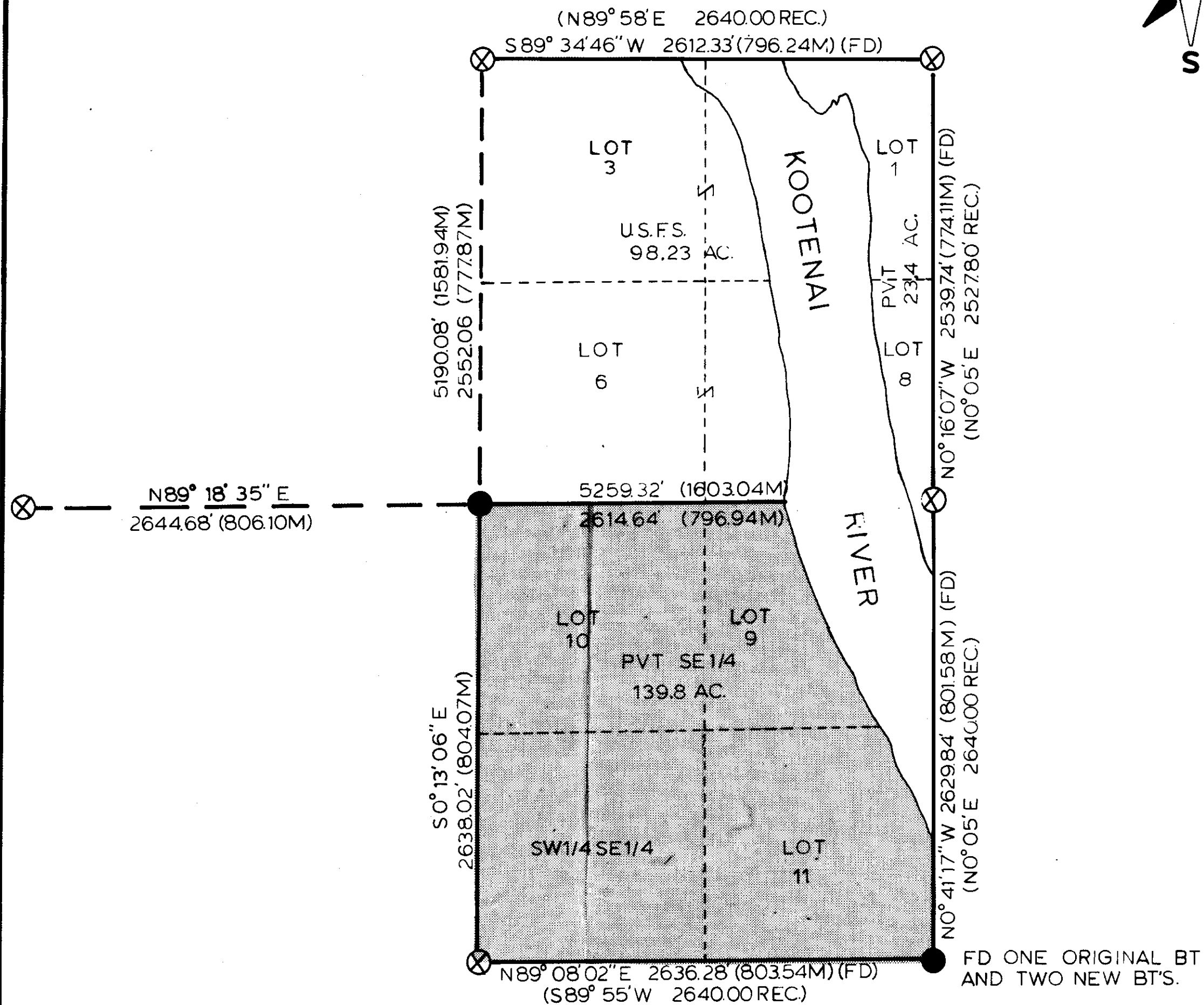
THIS REPRESENTS A RETRACEMENT AND PARTIAL SUBDIVISION OF SECTION 5, TOWNSHIP 30 NORTH, RANGE 30 WEST. REFERENCE SHOULD BE MADE TO NOTES AND PLATS DATED JUNE 1899.

PURPOSE OF THIS SURVEY IS TO RETRACE AND MARK THE LINE OF RECORD BETWEEN PRIVATE LANDS AND U.S. FOREST SERVICE LANDS.

THIS SURVEY WAS DONE WITH CONVENTIONAL SURVEY METHODS. THE FIELD NOTES AND COMPUTATIONS ARE FILED WITH THE U.S.D.A. FOREST SERVICE, KOOTENAI NATIONAL FOREST, SUPERVISOR'S OFFICE, LIBBY, MONTANA. THE BEARINGS ARE BASED ON S89°34'46"W BETWEEN THE NORTHEAST SECTION CORNER AND NORTH 1/4 CORNER OF SECTION 5 AS SHOWN ON CERTIFICATE OF SURVEY #

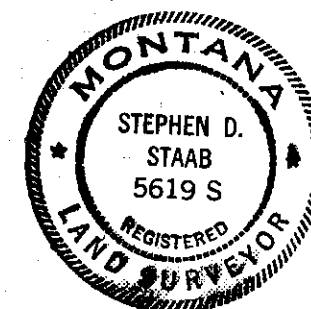
ALL MONUMENTS SET ARE 2-1/2"x30" ALUMINUM PIPES WITH ALUMINUM CAPS. FOR CORNER INFORMATION SEE THE RECORDATION FILES IN LINCOLN COUNTY COURT HOUSE, LIBBY, MONTANA.

THIS SURVEY WAS DONE AT THE REQUEST OF THE LIBBY DISTRICT RANGER, KOOTENAI NATIONAL FOREST.



CERTIFICATE:

I HEREBY CERTIFY THAT I AM A REGISTERED LAND SURVEYOR IN THE STATE OF MONTANA; THAT THE SURVEY SHOWN ON THIS PLAT HAS BEEN PREPARED IN ACCORDANCE WITH THE MONTANA CODE ANNOTATED (SECTIONS 76-3-101 THROUGH 76-3-614 1979) AND THE LINCOLN COUNTY REGULATIONS ADOPTED PURSUANT THERETO.



Stephen D. Staab
MONTANA REGISTRATION NO. 5619-S

CERTIFICATE OF EXAMINING LAND SURVEYOR

Approved this 29th day of FEBRUARY, 1980 A.D.

Stephen D. Staab 5619-S
Examining Land Surveyor Reg. No.

APPROVED: Blair McKinley
Chairman, County Commissioners

CERTIFICATE OF CLERK RECORDER

State of Montana, County of Lincoln filed this 29th day of February, 1980 A.D. at four o'clock A. M.
Catherine J. Vaughn by Betty Bell
County Clerk Recorder Deputy

1/4	SEC.	T.	R.
⊗	5	30	30

CERTIFICATE OF SURVEY NUMBER 754
_____ COUNTY, MONTANA

Indexed Platted