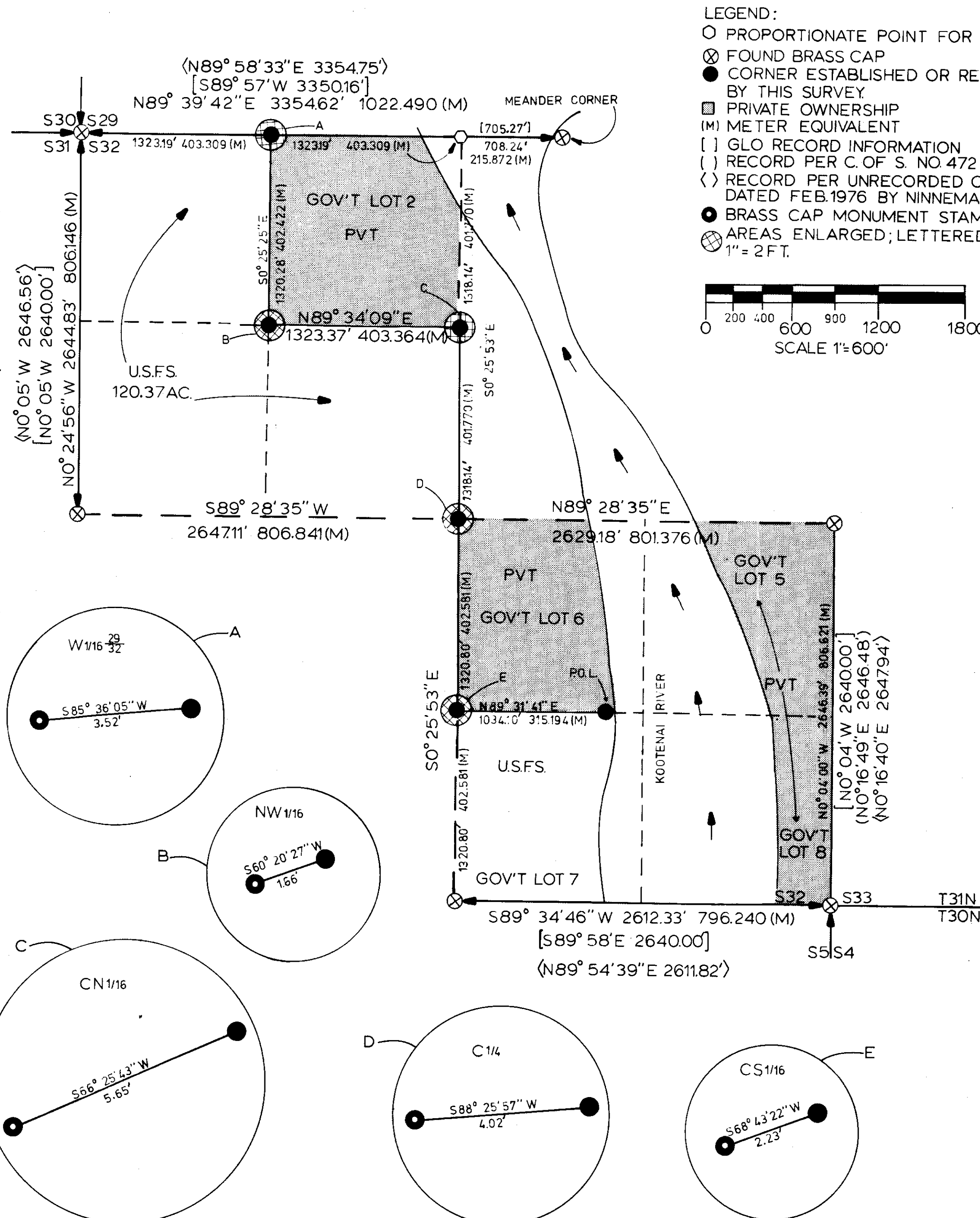


CERTIFICATE OF SURVEY

OCTOBER 1979

RETRACEMENT AND SUBDIVISION OF SECTION 32, TOWNSHIP 31 NORTH, RANGE 30 WEST PRINCIPAL MERIDIAN MONTANA



NOTES AND LEGAL DESCRIPTION:

THIS PLAT REPRESENTS A RETRACEMENT AND SUBDIVISION OF SECTION 32, TOWNSHIP 31 NORTH, RANGE 30 WEST, PRINCIPAL MERIDIAN MONTANA. REFERENCE SHOULD BE MADE TO THE NOTES AND PLAT DATED SEPTEMBER 1898, AND JUNE 30, 1899.

PURPOSE OF THIS SURVEY IS TO RETRACE AND MARK THE LINE OF RECORD BETWEEN PRIVATE AND U.S. FOREST SERVICE LANDS; U.S. FOREST SERVICE LANDS BEING LEGALLY DESCRIBED AS: NW 1/4 NW 1/4, S 1/2 NW 1/4, SW 1/4, AND GOVERNMENT LOT 7, SEC. 32, T31N, R30W, PMM.

THIS SURVEY WAS COMPLETED USING CONVENTIONAL METHODS IN MEETING THIRD ORDER CLASS II ACCURACY STANDARDS. THE FIELD NOTES, PHOTOGRAPHY AND COMPUTATIONS ARE FILED WITH U.S.D.A., FOREST SERVICE, KOOTENAI NATIONAL FOREST, SUPERVISOR'S OFFICE, LIBBY, MONTANA.

POSITION OF RIVER SCALED FROM U.S.G.S. QUAD.

ALL BEARINGS ARE BASED UPON THE GLO RECORD BEARING FOR THE SOUTH HALF OF THE EAST LINE OF SAID SECTION, BEING S 0° 04' E.

ALL MONUMENTS SET ARE 3 X 30 INCH ALUMINUM PIPES WITH ALUMINUM CAPS. FOR CORNER INFORMATION SEE THE RECORDATION FILE IN LINCOLN COUNTY COURT HOUSE, LIBBY, MONTANA.

THIS SURVEY WAS DONE AT THE REQUEST OF THE LIBBY DISTRICT RANGER, KOOTENAI NATIONAL FOREST.

SURVEYOR'S NOTES:

SECTION 32 WAS PREVIOUSLY SUBDIVIDED BY NINNEMAN ENGINEERING. AN UNRECORDED CERTIFICATE OF SURVEY DATED FEBRUARY 1976 SHOWS THAT THE POSITION OF THE NORTH 1/4 CORNER (A CONTROLLING CORNER) WAS PROPORTIONED BETWEEN THE NE AND NW SECTION CORNERS. THERE WAS NO WEIGHT GIVEN TO THE REMONUMENTED MEANDER CORNER ON THE RIGHT BANK OF THE KOOTENAI RIVER.

THE SUBDIVISION SHOWN HEREON WAS COMPLETED BY POSITIONING THE N 1/4 CORNER PROPORTIONATELY BETWEEN THE NW SECTION CORNER AND SAID MEANDER CORNER. THIS IS IN ACCORDANCE WITH THE RULES OF SURVEYING AS SET OUT IN THE 1973 "MANUAL", PARTICULARLY CHAPTER 5, SECTION 38.

THE DISCREPANCY NOTED ABOVE IS EVIDENT IN THE POSITIONING OF INTERIOR CORNERS, SHOWN BY ENLARGEMENTS ON THIS PLAT.

CERTIFICATE:

I HEREBY CERTIFY THAT I AM A REGISTERED LAND SURVEYOR IN THE STATE OF MONTANA; THAT THE SURVEY SHOWN ON THIS PLAT HAS BEEN PREPARED IN ACCORDANCE WITH THE MONTANA CODE ANNOTATED (SECTIONS 76-3-101 THROUGH 76-3-614 1979) AND THE LINCOLN COUNTY REGULATIONS ADOPTED PURSUANT THERE TO.

Thomas C. Hill

MONTANA REGISTRATION NO. 5612-S

CERTIFICATE OF EXAMINING LAND SURVEYOR

Approved this 28th day of FEBRUARY, 1980 A.D.

Donald E. Buntin 4974-S
Examining Land Surveyor Reg. No.

APPROVED: *R.W. Lindsey*
Chairman, County Commissioners

CERTIFICATE OF CLERK RECORDER

State of Montana, County of Lincoln filed this 29th day of February, 1980 A.D. at 10:35 o'clock A.M.

Alfred L. Taugher by *Betty Hill*
County Clerk Recorder Deputy

1/4	SEC	T	R
1	32	31N	30W
2			
3			
4			

CERTIFICATE OF SURVEY NUMBER 753
LINCOLN COUNTY, MONTANA

Entered Platted