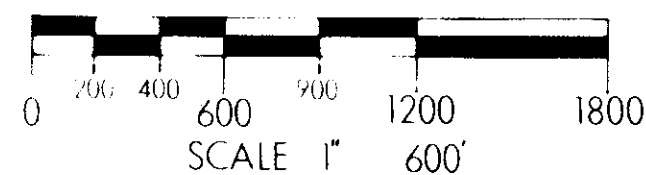


OCTOBER 1979

() GLO RECORD

- (M) METER EQUIVALENT
[] GLO RECORD REFERRING TO
THE SOUTH LINE OF SEC. 5
---- PROTRACTED LINES



THIS PLAT REPRESENTS A RETRACEMENT AND SUBDIVISION OF SECTION 8, TOWNSHIP 30 NORTH, RANGE 30 WEST, PRINCIPAL MERIDIAN MONTANA. PREFERENCE SHOULD BE MADE TO THE NOTES AND PLAT DATED JULY AND AUGUST, 1898 AND FEBRUARY 17, 1905.

THIS SURVEY WAS COMPLETED BY UTILIZING THE LASER RANGE POLE IN CONJUNCTION WITH CONVENTIONAL METHODS IN ATTAINING AN ACCURACY EXCEEDING THIRD ORDER, CLASS II STANDARDS. THE FIELD NOTES, PHOTOGRAPHY AND COMPUTATIONS ARE FILED WITH U.S.D.A., FOREST SERVICE, KOOTENAI NATIONAL FOREST, SUPERVISOR'S OFFICE, LIBBY, MONTANA.

ALL MONUMENTS SET ARE 3X30 INCH ALUMINUM PIPES WITH ALUMINUM CAPS. FOR CORNER INFORMATION SEE THE RECORDATION FILE IN LINCOLN COUNTY COURT HOUSE, LIBBY, MONTANA.

CERTIFICATE:
I HEREBY CERTIFY THAT I AM A REGISTERED LAND SURVEYOR IN THE STATE OF MONTANA; THAT THE SURVEY SHOWN ON THIS PLAT HAS BEEN PREPARED IN ACCORDANCE WITH THE MONTANA CODE ANNOTATED (SECTIONS 76-3-101 THROUGH 76-3-614 1979) AND THE LINCOLN COUNTY REGULATIONS ADOPTED PURSUANT THERE TO.

Thomas C Hill

MONTANA REGISTRATION NO. 5612-S

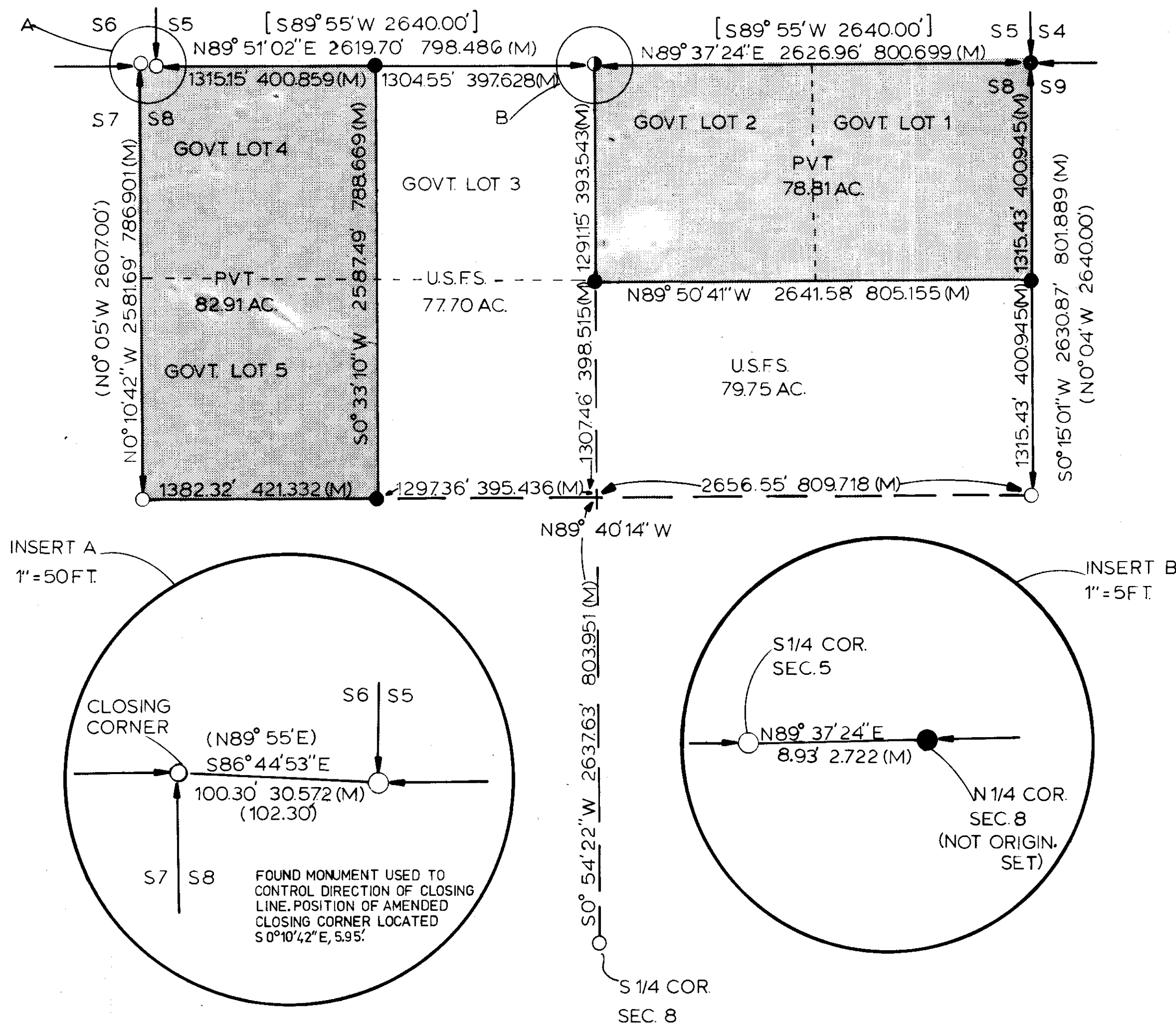
Approved this 28th day of FEBRUARY, 1980 A.D.

Examining Land Surveyor Reg. No. 474-S

APPROVED: RW Lindsey
Chairman, County Commissioners

State of Montana, County of Lincoln filed this 29th
day of February, 1980 A.D. at 1:30 o'clock A. M.
Eleanor L. Pauson by Betty Bess
County Clerk Recorder Deputy

CERTIFICATE OF SURVEY NUMBER 752
LINCOLN COUNTY, MONTANA



INDEXED PLATTED