

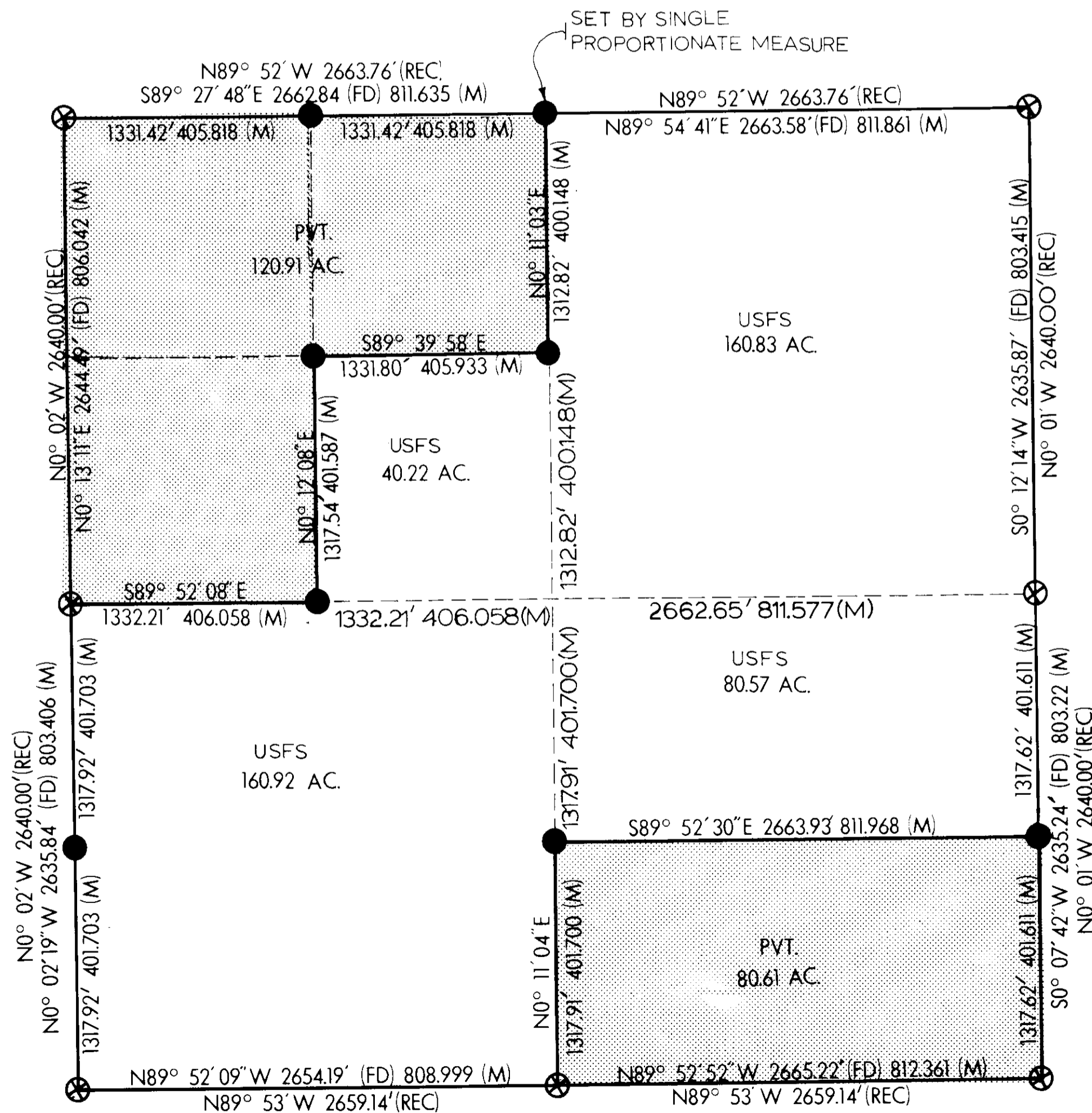
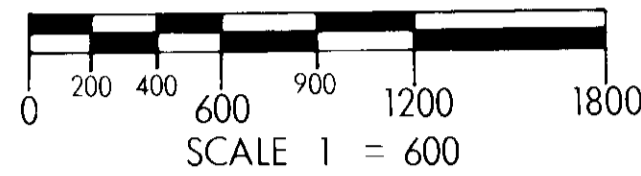
CERTIFICATE OF SURVEY

RETRACEMENT AND SUBDIVISION OF SECTION 26, TOWNSHIP 34 NORTH, RANGE 26 WEST PRINCIPAL MERIDIAN MONTANA

AUGUST 1979

LEGEND:

- ⊗ FOUND BRASS CAP
- CORNER ESTABLISHED OR RE-ESTABLISHED BY THIS SURVEY
- ▨ PRIVATE OWNERSHIP
- (M) METER EQUIVALENT
- (REC) GLO RECORD



NOTES AND LEGAL DESCRIPTION:

THIS PLAT REPRESENTS A RETRACEMENT AND SUBDIVISION OF SECTION 26, TOWNSHIP 34 NORTH, RANGE 26 WEST, PRINCIPAL MERIDIAN MONTANA. REFERENCE SHOULD BE MADE TO THE NOTES AND PLAT DATED AUGUST, 1894.

PURPOSE OF THIS SURVEY IS TO DETERMINE THE BOUNDARY LINE BETWEEN PRIVATE AND U.S. FOREST SERVICE LANDS; U.S. FOREST SERVICE LANDS BEING LEGALLY DESCRIBED AS: THE SE 1/4 NW 1/4, NE 1/4, SW 1/4, N 1/2 SE 1/4, SEC. 26, T34N, R26W, P.M.M.

THIS SURVEY WAS COMPLETED BY UTILIZING A COMBINATION OF PHOTOGRAMMETRIC AND CONVENTIONAL METHODS IN ATTAINING AN ACCURACY EXCEEDING THIRD ORDER, CLASS II STANDARDS. THE FIELD NOTES, PHOTOGRAPHY AND COMPUTATIONS ARE FILED WITH U.S.D.A. FOREST SERVICE, KOOTENAI NATIONAL FOREST, SUPERVISOR'S OFFICE, LIBBY, MONTANA.

ALL BEARINGS ARE BASED UPON THE PUBLISHED COORDINATES OF U.S.C. AND G.S. STATIONS, MARSTON AND SUNDAY.

ALL MONUMENTS SET ARE 3x30 INCH ALUMINUM PIPES WITH ALUMINUM CAPS. FOR CORNER INFORMATION SEE THE RECORDATION FILE IN LINCOLN COUNTY COURT HOUSE, LIBBY, MONTANA.

CERTIFICATE:

I HEREBY CERTIFY THAT I AM A REGISTERED LAND SURVEYOR IN THE STATE OF MONTANA; THAT THE SURVEY SHOWN ON THIS PLAT HAS BEEN PREPARED IN ACCORDANCE WITH THE MONTANA CODE ANNOTATED (SECTIONS 76-3-101 THROUGH 76-3-614 1979) AND THE LINCOLN COUNTY REGULATIONS ADOPTED PURSUANT THERE TO.

Thomas C Hill
MONTANA REGISTRATION NO. 5612-S

CERTIFICATE OF EXAMINING LAND SURVEYOR

Approved this 28th day of FEBRUARY, 1980 A.D.

Paul E. Hunter 4974-S
Examining Land Surveyor Reg. No.

APPROVED: [Signature]
Chairman, County Commissioners

CERTIFICATE OF CLERK RECORDER

State of Montana, County of Lincoln filed this 29th day of February, 1980 A.D. at 10:10 o'clock A. M.
Wesley J. Doughton by Becky Deel
County Clerk Recorder Deputy

1/4	SEC.	T.	R.
⊗	26	34N	26W

CERTIFICATE OF SURVEY NUMBER 748
LINCOLN COUNTY, MONTANA

Indexed Platted