

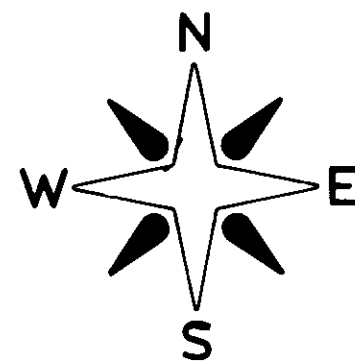
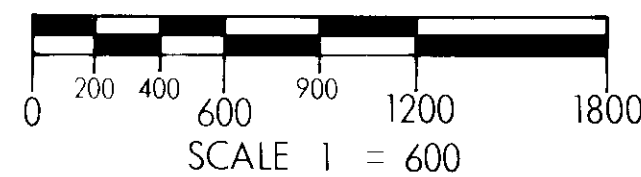
CERTIFICATE OF SURVEY

RETRACEMENT AND SUBDIVISION OF SECTION 35, TOWNSHIP 34 NORTH, RANGE 26 WEST PRINCIPAL MERIDIAN MONTANA

AUGUST 1979

LEGEND:

- ⊗ FOUND BRASS CAP
- CORNER ESTABLISHED OR RE-ESTABLISHED BY THIS SURVEY
- ▨ PRIVATE OWNERSHIP
- (M) METER EQUIVALENT
- (REC) G.L.O. RECORDS



NOTES:

THIS PLAT REPRESENTS A RETRACEMENT AND SUBDIVISION OF SECTION 35, TOWNSHIP 34 NORTH, RANGE 26 WEST, PRINCIPAL MERIDIAN MONTANA. REFERENCE SHOULD BE MADE TO THE NOTES AND PLAT DATED AUGUST, 1894.

PURPOSE OF THIS SURVEY IS TO DETERMINE THE BOUNDARY LINE BETWEEN PRIVATE AND U.S. FOREST SERVICE LANDS; U.S. FOREST SERVICE LANDS BEING LEGALLY DESCRIBED AS: THE S 1/2 NE 1/4; N 1/2 SE 1/4, S 1/4, SECTION 35, T34N, R26W, P.M.M.

THIS SURVEY WAS COMPLETED UTILIZING A COMBINATION OF PHOTOGRAMMETRIC AND CONVENTIONAL METHODS IN ATTAINING AN ACCURACY EXCEEDING THIRD ORDER, CLASS II STANDARDS. THE FIELD NOTES, PHOTOGRAPHY, AND COMPUTATIONS ARE FILED WITH U.S.D.A., FOREST SERVICE, KOOTENAI NATIONAL FOREST, SUPERVISOR'S OFFICE, LIBBY, MONTANA.

ALL BEARINGS ARE BASED UPON THE PUBLISHED COORDINATES OF U.S.C. AND G.S. STATIONS, MARSTON AND SUNDAY.

ALL MONUMENTS SET ARE 3x30 INCH ALUMINUM PIPES WITH ALUMINUM CAPS. FOR CORNER INFORMATION SEE THE RECORDATION FILE IN LINCOLN COUNTY COURT HOUSE, LIBBY, MONTANA.

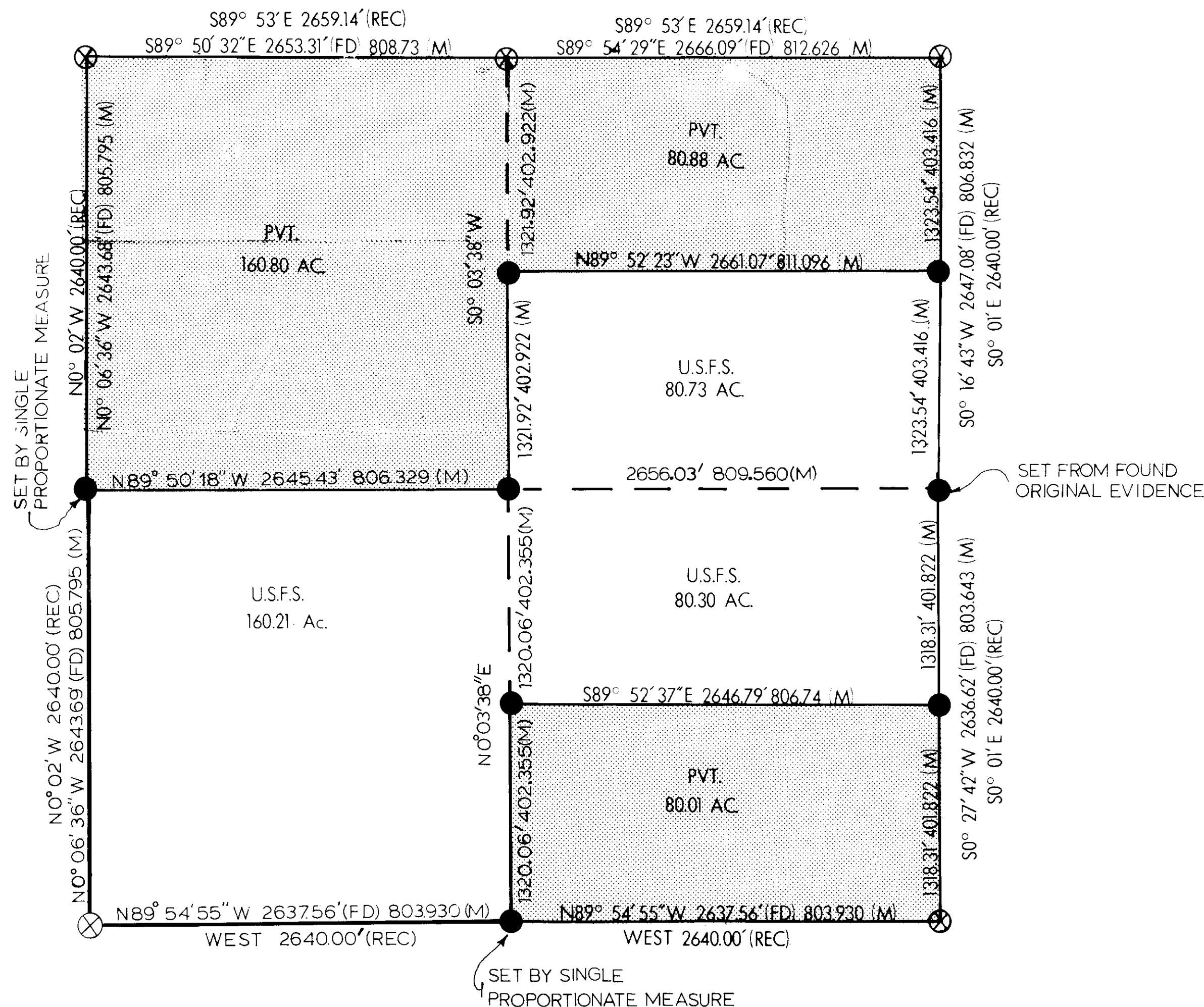
THIS SURVEY WAS DONE AT THE REQUEST OF THE MURPHY LAKE DISTRICT RANGER, KOOTENAI NATIONAL FOREST.

CERTIFICATE:

I HEREBY CERTIFY THAT I AM A REGISTERED LAND SURVEYOR IN THE STATE OF MONTANA; THAT THE SURVEY SHOWN ON THIS PLAT HAS BEEN PREPARED IN ACCORDANCE WITH THE MONTANA CODE ANNOTATED (SECTIONS 76-3-101 THROUGH 76-3-614 1979) AND THE LINCOLN COUNTY REGULATIONS ADOPTED PURSUANT THERETO.

Thomas C. Hill

MONTANA REGISTRATION NO. 5612-S



CERTIFICATE OF EXAMINING LAND SURVEYOR

Approved this 20th day of FEBRUARY, 1980 A.D.

Paul E. Stanton 477-S
Examining Land Surveyor Reg. No.

APPROVED: Red Lindsey
Chairman, County Commissioners

CERTIFICATE OF CLERK RECORDER

State of Montana, County of Lincoln filed this 29th day of February, 1980 A.D. at 1:05 o'clock A. M.
Deborah A. Douglas by Betty Bell
County Clerk Recorder Deputy

1/4	SEC.	T.	R.
⊗	35	34N	26W

CERTIFICATE OF SURVEY NUMBER 747
LINCOLN COUNTY, MONTANA

INDEXED PLATTED