

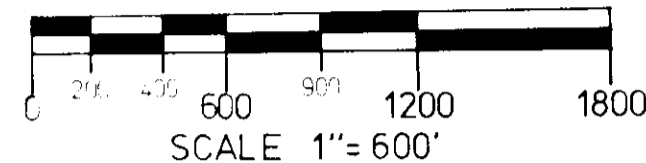
CERTIFICATE OF SURVEY

RETRACEMENT AND PARTIAL SUBDIVISION OF
SECTION 19, TOWNSHIP 32 NORTH, RANGE 29 WEST
PRINCIPAL MERIDIAN MONTANA, LINCOLN COUNTY

JUNE - JULY, 1978

LEGEND:

- ⊗ FOUND BRASS CAP
- CORNER ESTABLISHED OR RE-ESTABLISHED BY THIS SURVEY
- ▣ PRIVATE OWNERSHIP
- (M) METER EQUIVELANT



DESCRIPTION

A PARCEL OF LAND IN SECTION 19, T32N, R29W, PMM. MORE FULLY DESCRIBED AS FOLLOWS:
GOVT LOTS 1,2,3,4, E1/2 W1/2, SE1/4 CONTAINING 409.32 ACRES MORE OR LESS.

NOTES:

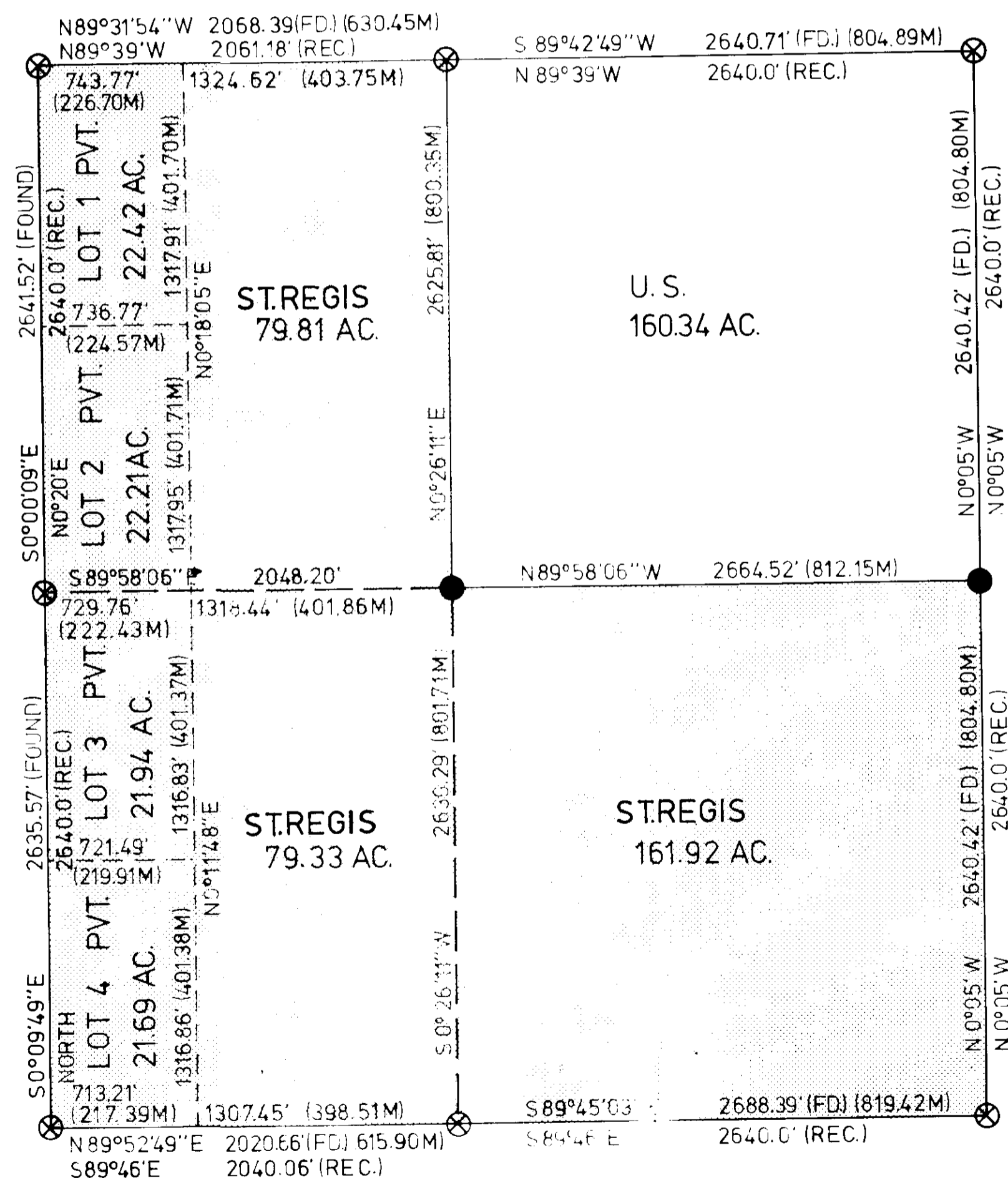
THIS PLAT REPRESENTS A RETRACEMENT AND PARTIAL SUBDIVISION OF SECTION 19, TOWNSHIP 32 NORTH, RANGE 29 WEST. REFERENCE SHOULD BE MADE TO NOTES AND PLAT DATED MARCH 1901.

PURPOSE OF THIS SURVEY IS TO LOCATE THE LINE OF RECORD BETWEEN PRIVATE LANDS AND GOVERNMENT LANDS.

THIS SURVEY WAS DONE BY CONVENTIONAL SURVEY METHODS. THE FIELD NOTES AND COMPUTATIONS ARE FILED WITH THE U.S.D.A. FOREST SERVICE, KOOTENAI NATIONAL FOREST, SUPERVISOR'S OFFICE, LIBBY, MONTANA. THE BEARINGS ARE BASED ON THE RECORD BEARING OF N0°05'W BETWEEN THE SOUTHEAST SECTION CORNER AND THE NORTHEAST SECTION CORNER OF SECTION 19.

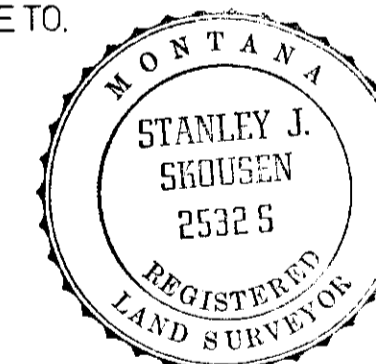
ALL MONUMENTS SET ARE 2-1/2"x30" ALUMINUM PIPES WITH ALUMINUM CAPS. FOR CORNER INFORMATION SEE THE RECORDATION FILES IN THE LINCOLN COUNTY COURTHOUSE, LIBBY, MONTANA.

THIS SURVEY WAS DONE AT THE REQUEST OF THE FISHER RIVER DISTRICT RANGER, KOOTENAI NATIONAL FOREST.



CERTIFICATE:

I HEREBY CERTIFY THAT I AM A REGISTERED LAND SURVEYOR IN THE STATE OF MONTANA, THAT THE SURVEY SHOWN ON THE PLAT HAS BEEN PREPARED IN ACCORDANCE WITH THE MONTANA SUBDIVISION AND PLATTING ACT (SECTIONS 11-3859 THROUGH 11-3876 R.C.M. 1947) AND THE LINCOLN COUNTY REGULATIONS ADOPTED PURSUANT THERETO.



Stanley J. Skousen
STANLEY J. SKOUSEN
MONTANA REGISTRATION NO. 25325
OCTOBER 1975

APPROVED BY: *Melvin D. Sauter* 42325
EXAMINING LAND SURVEYOR

DATE _____

APPROVED: *Acting* *Jim R. May*
CHAIRMAN, COUNTY COMMISSIONERS

CERTIFICATE OF CLERK RECORDER
STATE OF MONTANA, COUNTY OF *Lincoln* FILED
THIS *19th* DAY OF *December*, 1979 A.D. AT
10:30 O'CLOCK *A.M.*
Thomas J. Taugher BY *Betty Bue*
COUNTY CLERK RECORDER DEPUTY

CERTIFICATE OF
SURVEY NUMBER *728*
LINCOLN COUNTY, MONTANA

1/4	SEC.	T.	R.
⊗	19	32N	29W
⊗			
⊗			
⊗			
⊗			
⊗			

INDEXED Platted