

# CERTIFICATE OF SURVEY

A PARTIAL SUBDIVISION OF  
SEC. 24, T31N, R31W, M.P.M.  
LINCOLN COUNTY

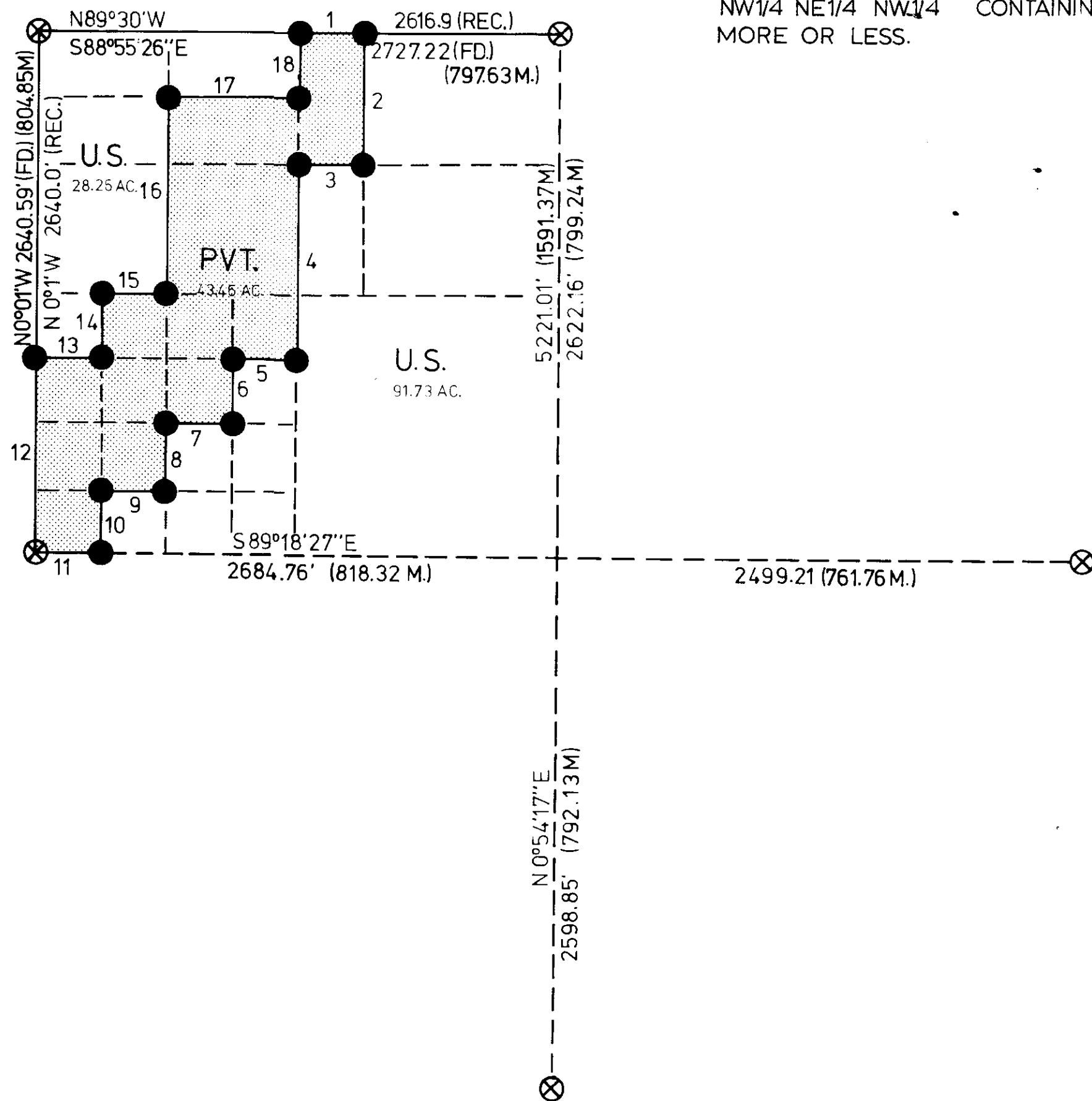
APRIL - MAY 1978

**LEGEND:**

- ⊗ FOUND BRASS CAP
- CORNER ESTABLISHED OR RE-ESTABLISHED BY THIS SURVEY
- ▨ PRIVATE OWNERSHIP
- M METER EQUIVALENT

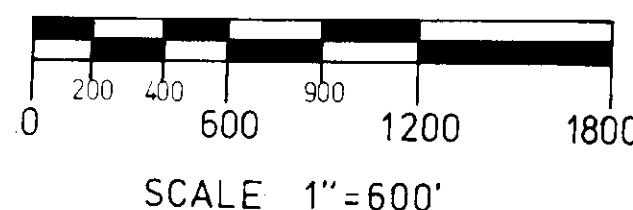
**DESCRIPTION**

A PARCEL OF LAND IN SECTION 24 T31N, R31W, P.M.M. MORE FULLY DESCRIBED AS FOLLOWS:  
SW1/4 SW1/4 SW1/4 NW1/4, N1/2 SW1/4 SW1/4 NW1/4,  
S1/2 NW1/4 SW1/4 NW1/4, NE1/4 NE1/4 SW1/4 NW1/4,  
SW1/4 NE1/4 SW1/4 NW1/4, N1/2 NE1/4 SW1/4 NW1/4,  
SE1/4 NW1/4 NW1/4, S1/2 NE1/4 NW1/4 NW1/4, W1/2  
NW1/4 NE1/4 NW1/4 CONTAINING 43.46 ACRES  
MORE OR LESS.



**TRAVERSE DATA**

1 - S 88°55'26" E 340.87' (103.90 M)	7 - N 89°12'37" W 336.87' (102.48 M)	13 - S 89°09'43" E 337.53' (102.86 M)
2 - S 0°34'24" W 657.09' (200.28 M)	8 - S 0°12'45" W 329.36' (100.39 M)	14 - N 0°05'52" E 329.64' (100.47 M)
3 - N 89°01'07" W 339.54' (103.49 M)	9 - N 89°15'29" W 336.20' (102.47 M)	15 - S 89°06'51" E 338.20' (103.08 M)
4 - S 0°26'33" W 986.73' (300.76 M)	10 - S 0°05'52" W 329.63' (100.47 M)	16 - N 0°12'45" E 988.08' (301.17 M)
5 - N 89°09'43" W 337.54' (102.86 M)	11 - N 89°18'27" W 335.53' (102.27 M)	17 - S 88°58'16" E 680.42' (207.39 M)
6 - S 0°19'39" W 329.09' (100.31 M)	12 - N 0°01' W 989.72' (301.67 M)	18 - N 0°26'33" E 328.82' (100.22 M)



**NOTES:**

THIS PLAT REPRESENTS A PARTIAL SUBDIVISION OF SECTION 24, TOWNSHIP 31 NORTH, RANGE 31 WEST. REFERENCE SHOULD BE MADE TO NOTES AND PLAT DATED AUGUST 1893.

PURPOSE OF THIS SURVEY IS TO RETRACE AND MARK THE LINE OF RECORD BETWEEN PRIVATE LANDS AND U.S. GOVERNMENT LANDS.

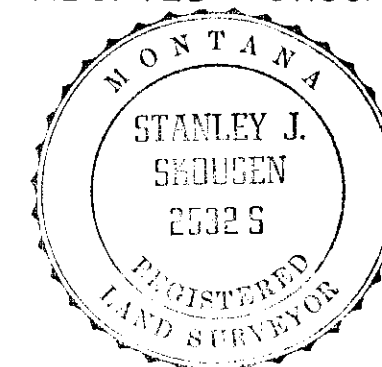
THIS SURVEY WAS DONE BY CONVENTIONAL SURVEY METHODS. THE FIELD NOTES AND COMPUTATIONS ARE FILED WITH THE U.S.D.A., FOREST SERVICE, KOOTENAI NATIONAL FOREST, SUPERVISOR'S OFFICE, LIBBY, MONTANA. THE BEARINGS ARE BASED ON THE RECORD BEARING OF N 0°01' W BETWEEN THE WEST 1/4 CORNER AND THE NORTHWEST SECTION CORNER OF SECTION 24.

ALL MONUMENTS SET ARE 2-1/2" x 30" ALUMINUM PIPES WITH ALUMINUM CAPS. FOR CORNER INFORMATION SEE THE RECORDATION FILE IN THE LINCOLN COUNTY COURTHOUSE, LIBBY, MONTANA.

THIS SURVEY WAS DONE AT THE REQUEST OF THE LIBBY DISTRICT RANGER, KOOTENAI NATIONAL FOREST.

**CERTIFICATE:**

I HEREBY CERTIFY THAT I AM A REGISTERED LAND SURVEYOR IN THE STATE OF MONTANA; THAT THE SURVEY SHOWN ON THIS PLAT HAS BEEN PREPARED IN ACCORDANCE WITH THE MONTANA SUBDIVISION AND PLATTING ACT (SECTIONS 11-3859 THROUGH 11-3876 R.C.M. 1947) AND THE LINCOLN COUNTY REGULATIONS ADOPTED PURSUANT THERETO.



*Stanley J. Skousen*  
STANLEY J. SKOUSEN  
MONTANA REGISTRATION NO. 25325  
OCTOBER 1975

APPROVED BY: *Melvin D. Sauter* 42325  
EXAMINING LAND SURVEYOR

DATE: \_\_\_\_\_

APPROVED: *Acting* *Jim R. Montgomery*  
CHAIRMAN, COUNTY COMMISSIONERS  
CERTIFICATE OF CLERK RECORDER,  
STATE OF MONTANA COUNTY OF *Lincoln*  
FILED THIS *14* DAY OF *December*, 1979 AD.  
AT *10:15* O'CLOCK *A.M.*  
*Sharon L. Tauscher* BY *Betty Beal*  
COUNTY CLERK RECORDER DEPUTY

1/4	SEC.	T.	R.
⊗	24	31N	31W
□			
□			
□			
□			
□			

CERTIFICATE OF SURVEY NUMBER 727  
LINCOLN COUNTY, MONTANA

INDEXED PLATTED