

ENDERS ACRES AND EXTENSION BY ST. REGIS

LINCOLN COUNTY MONTANA

CERTIFICATE OF SURVEY

IN THE NW 1/4 OF SECTION 14
TWP. 30 N., R. 31 W., M.P.M.

SEPTEMBER, 1976

DESCRIPTION

An irregular tract of land near Libby in Lincoln County, Montana, lying wholly within the NW 1/4 of Section 14 Twp. 30 N., R. 31 W., M.P.M., containing 0.180 acre, more or less, and more particularly described as follows:

Beginning at the northeast corner of Lot 11 of Enders Acres (a recorded subdivision of Lincoln County, Montana) in the NW 1/4 of Section 14 Twp. 30 N., R. 31 W., M.P.M. as relocated by a survey during September, 1976; thence, from said point of beginning, along the northerly line of said Lot 11 extended easterly, S 89° 47' 09" E 90.44 feet to a point on the southwesterly right of way line of a St. Regis Paper Co. Haul Road at a distance of 30.0 feet measured at right angles from the centerline thereof; thence, along said southwesterly right of way line, S 21° 13' 55" E 111.16 feet to a point on the east-west centerline of said Section 14; thence, leaving said southwesterly right of way line, along said east-west centerline, S 89° 16' 53" W 59.88 feet to the southeast corner of said Lot 11; thence, along the north-easterly line of said Lot 11, N 34° 04' 30" W 126.40 feet to the point of beginning.

EXEMPTION STATEMENT

As a boundary adjustment or consolidation of adjoining parcels, this parcel shall not be considered a separate parcel of land pursuant to Section 11-3002 (6), M.C.A. (revised) and is therefore exempt from review under Occasional Sale provisions, and this parcel of land is also exempt under M.C. 16-2-1, (1C)-1 14340 Subdivisions Section (12, Subsection (d) Subsection (1) from sanitary review.

LEGEND

[] Record bearings and distances of Enders Acres [x24] Steel rods with Caps stamped: J... 4661 S

Scale



NINNEMAN ENGINEERING TROY, MONTANA

STATE OF MONTANA COUNTY OF LINCOLN

Filed on this 26th day of January, 1977 at 12:00 o'clock P.M.

APPROVED: *Melvin S. Lauter*

Examining Land Surveyor
Registration No. 42325

APPROVED: *Leo K. Casian*

Chairman Board of Commissioners

ATTESTED: *Eleanor L. Vaughn*

County Clerk and Recorder

Eleanor L. Vaughn
County Clerk and Recorder

by *Sanctus Martin*
Deputy

Dated this 17th day of Nov. 1976

Certificate of Survey No. 297

State of Montana
Dept. of Highways
Easement

CERTIFICATE OF SURVEYOR

I, J. W. Ninneman, a duly qualified and licensed Civil Engineer and Land Surveyor of the State of Montana, do hereby certify that the survey as shown hereon in the NW 1/4 of Section 14 Twp. 30 N., R. 31 W., M.P.M. was made under my supervision in September, 1976 in accordance with the provisions of Sections 11-3859 through 11-3876 of the Revised Codes of Montana, 1947; and that the said platted area was laid out on the ground as shown hereon.

Dated this 3rd day of September, 1976.

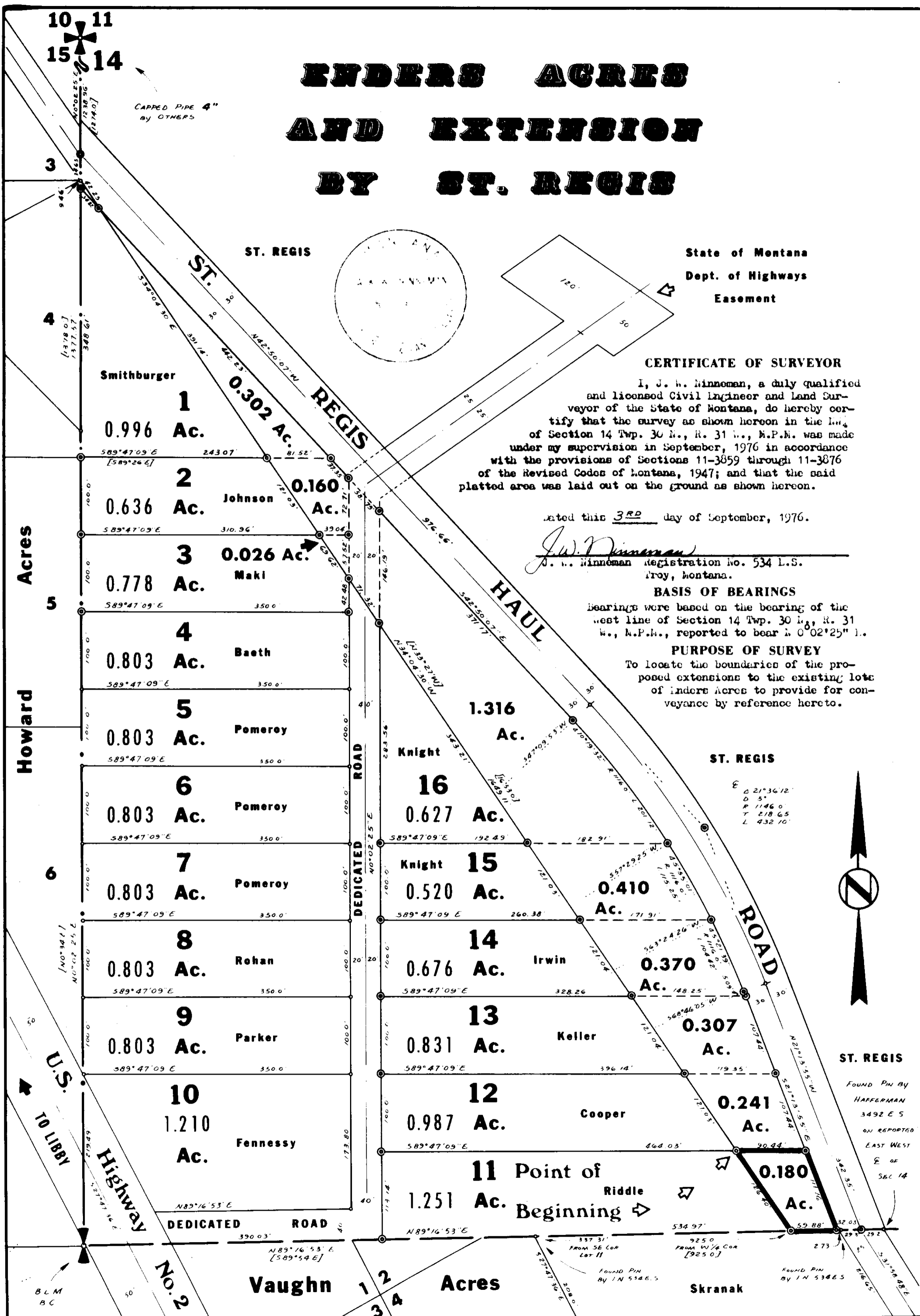
J. W. Ninneman
J. W. Ninneman Registration No. 534 L.S.
Troy, Montana.

BASIS OF BEARINGS

Bearings were based on the bearing of the west line of Section 14 Twp. 30 N., R. 31 W., M.P.M., reported to bear N 0° 02' 25" E.

PURPOSE OF SURVEY

To locate the boundaries of the proposed extensions to the existing lots of Enders Acres to provide for conveyance by reference hereto.



ST. REGIS

FOUND PIN BY HOFFERMAN 3492 E S ON REPORTED EAST WEST E OF SEC 14

FOUND PIN BY HOFFERMAN 3492 E S ON REPORTED EAST WEST E OF SEC 14

FOUND PIN BY HOFFERMAN 3492 E S ON REPORTED EAST WEST E OF SEC 14

FOUND PIN BY HOFFERMAN 3492 E S ON REPORTED EAST WEST E OF SEC 14

FOUND PIN BY HOFFERMAN 3492 E S ON REPORTED EAST WEST E OF SEC 14

FOUND PIN BY HOFFERMAN 3492 E S ON REPORTED EAST WEST E OF SEC 14

FOUND PIN BY HOFFERMAN 3492 E S ON REPORTED EAST WEST E OF SEC 14

10 11
15 14

CAPPED PIPE 4" BY OTHERS

ST. REGIS

Smithburger

Johnson

Maki

Baeth

Pomeroy

Pomeroy

Pomeroy

Rohan

Parker

Fennessy

Vaughn

0.160 Ac.

0.026 Ac.

0.803 Ac.

0.803 Ac.

0.803 Ac.

0.803 Ac.

0.803 Ac.

0.803 Ac.

0.987 Ac.

1.251 Ac.

1.210 Ac.

0.302 Ac.

0.302 Ac.

1.316 Ac.

0.627 Ac.

0.520 Ac.

0.410 Ac.

0.676 Ac.

0.370 Ac.

0.307 Ac.

0.241 Ac.

0.180 Ac.

1.316 Ac.

0.627 Ac.

0.520 Ac.

0.410 Ac.

0.676 Ac.

0.370 Ac.

0.307 Ac.

0.241 Ac.

0.180 Ac.

0.180 Ac.

0.180 Ac.

1.316 Ac.

0.627 Ac.

0.520 Ac.

0.410 Ac.

0.676 Ac.

0.370 Ac.

0.307 Ac.

0.241 Ac.

0.180 Ac.

0.180 Ac.

0.180 Ac.

1.316 Ac.

0.627 Ac.

0.520 Ac.

0.410 Ac.

0.676 Ac.

0.370 Ac.

0.307 Ac.

0.241 Ac.

0.180 Ac.

0.180 Ac.

0.180 Ac.

1.316 Ac.

0.627 Ac.

0.520 Ac.

0.410 Ac.

0.676 Ac.

0.370 Ac.

0.307 Ac.

0.241 Ac.

0.180 Ac.

0.180 Ac.

0.180 Ac.

1.316 Ac.

0.627 Ac.

0.520 Ac.

0.410 Ac.

0.676 Ac.

0.370 Ac.

0.307 Ac.

0.241 Ac.

0.180 Ac.

0.180 Ac.

0.180 Ac.

1.316 Ac.

0.627 Ac.

0.520 Ac.

0.410 Ac.

0.676 Ac.

0.370 Ac.

0.307 Ac.

0.241 Ac.

0.180 Ac.

0.180 Ac.

0.180 Ac.

1.316 Ac.

0.627 Ac.

0.520 Ac.

0.410 Ac.

0.676 Ac.

0.370 Ac.

0.307 Ac.

0.241 Ac.

0.180 Ac.

0.180 Ac.

0.180 Ac.

1.316 Ac.

0.627 Ac.

0.520 Ac.

0.410 Ac.

0.676 Ac.

0.370 Ac.

0.307 Ac.

0.241 Ac.

0.180 Ac.

0.180 Ac.

0.180 Ac.

1.316 Ac.

0.627 Ac.

0.520 Ac.

0.410 Ac.

0.676 Ac.

0.370 Ac.

0.307 Ac.

0.241 Ac.

0.180 Ac.

0.180 Ac.

0.180 Ac.

1.316 Ac.

0.627 Ac.

0.520 Ac.

0.410 Ac.

0.676 Ac.

0.370 Ac.

0.307 Ac.

0.241 Ac.

0.180 Ac.

0.180 Ac.

0.180 Ac.

1.316 Ac.

0.627 Ac.

0.520 Ac.

0.410 Ac.

0.676 Ac.

0.370 Ac.

0.307 Ac.

0.241 Ac.

0.180 Ac.

0.180 Ac.

0.180 Ac.

1.316 Ac.

0.627 Ac.

0.520 Ac.

0.410 Ac.

0.676 Ac.

0.370 Ac.

0.307 Ac.

0.241 Ac.

0.180 Ac.

0.180 Ac.

0.180 Ac.

1.316 Ac.

0.627 Ac.

0.520 Ac.

0.410 Ac.

0.676 Ac.

0.370 Ac.

0.307 Ac.

0.241 Ac.

0.180 Ac.

0.180 Ac.

0.180 Ac.

1.316 Ac.

0.627 Ac.

0.520 Ac.

0.410 Ac.

0.676 Ac.

0.370 Ac.

0.307 Ac.

0.241 Ac.

0.180 Ac.

0.180 Ac.

0.180 Ac.

1.316 Ac.

0.627 Ac.

0.520 Ac.

0.410 Ac.

0.676 Ac.

0.370 Ac.

0.307 Ac.

0.241 Ac.

0.180 Ac.

0.180 Ac.

0.180 Ac.

1.316 Ac.

0.627 Ac.

0.520 Ac.

0.410 Ac.

0.676 Ac.

0.370 Ac.

0.307 Ac.

0.241 Ac.

0.180 Ac.

0.180 Ac.

0.180 Ac.

1.316 Ac.

0.627 Ac.

0.520 Ac.

0.410 Ac.

0.676 Ac.

0.370 Ac.