

Lincoln County, Montana

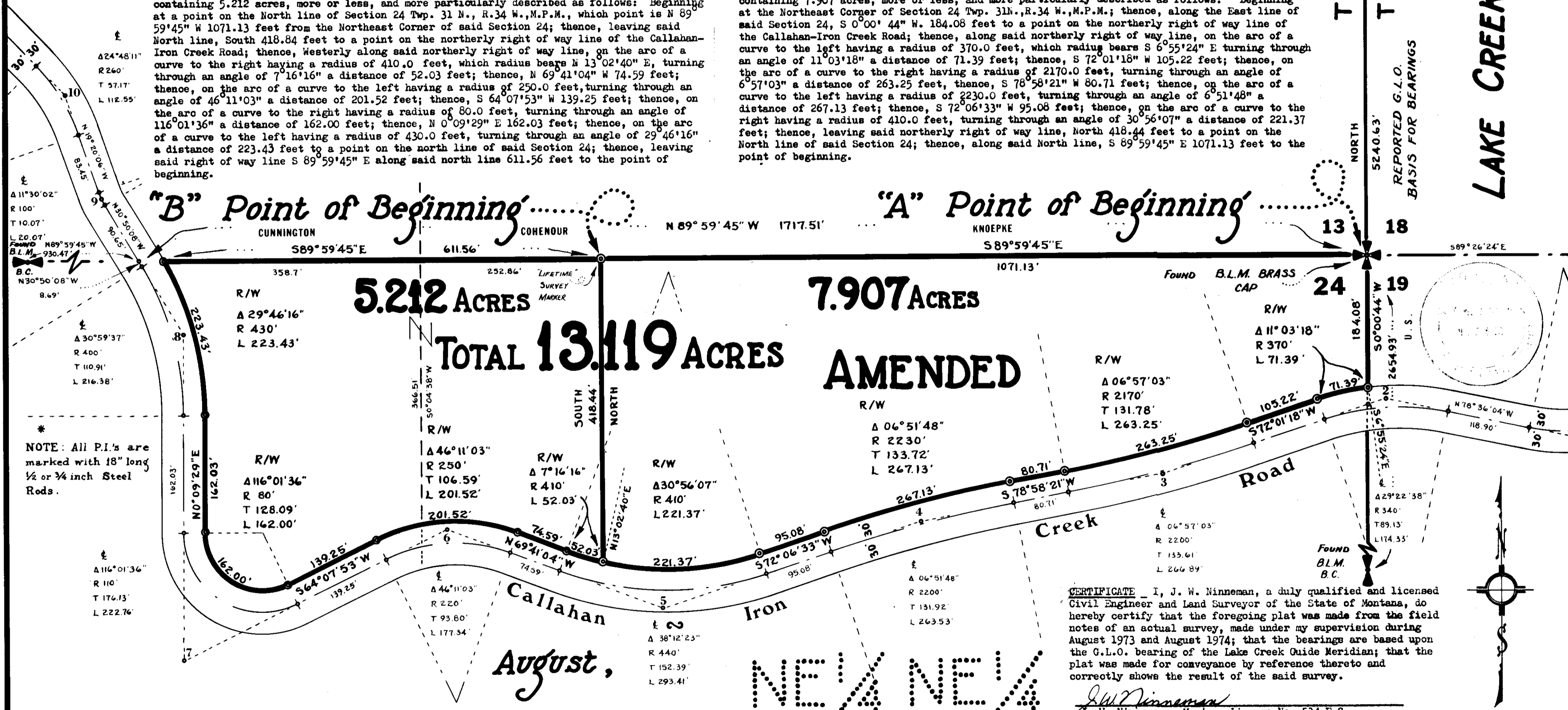
FOUND B.L.M. B.C.

# GARRISON TO LINCOLN COUNTY

## IN THE NE<sup>1</sup>/<sub>4</sub> NE<sup>1</sup>/<sub>4</sub> AND THE NW<sup>1</sup>/<sub>4</sub> NE<sup>1</sup>/<sub>4</sub> OF SECTION 24 TWP. 31 N., R. 34 W., M.P.M.

**DESCRIPTION PARCEL B** An irregular tract of land near Troy in Lincoln County, Montana, lying wholly within the NE<sup>1</sup>/<sub>4</sub> NE<sup>1</sup>/<sub>4</sub> and the NW<sup>1</sup>/<sub>4</sub> NE<sup>1</sup>/<sub>4</sub> of Section 24 Twp. 31 N., R. 34 W., M.P.M., containing 5.212 acres, more or less, and more particularly described as follows: Beginning at a point on the North line of Section 24 Twp. 31 N., R. 34 W., M.P.M., which point is N 89° 59' 45" W 1071.13 feet from the Northeast Corner of said Section 24; thence, leaving said North line, South 418.84 feet to a point on the northerly right of way line of the Callahan-Iron Creek Road; thence, westerly along said northerly right of way line, on the arc of a curve to the right having a radius of 410.0 feet, which radius bears N 13° 02' 40" E, turning through an angle of 7° 16' 16" a distance of 52.03 feet; thence, N 69° 41' 04" W 74.59 feet; thence, on the arc of a curve to the left having a radius of 250.0 feet, turning through an angle of 46° 11' 03" a distance of 201.52 feet; thence, S 64° 07' 53" W 139.25 feet; thence, on the arc of a curve to the right having a radius of 80.0 feet, turning through an angle of 116° 01' 36" a distance of 162.00 feet; thence, N 0° 09' 29" E 162.03 feet; thence, on the arc of a curve to the left having a radius of 430.0 feet, turning through an angle of 29° 46' 16" a distance of 223.43 feet to a point on the north line of said Section 24; thence, leaving said right of way line S 89° 59' 45" E along said north line 611.56 feet to the point of beginning.

**AMENDED DESCRIPTION PARCEL A** An irregular tract of land near Troy in Lincoln County, Montana, lying wholly within the NE<sup>1</sup>/<sub>4</sub> NE<sup>1</sup>/<sub>4</sub> of Section 24 Twp. 31 N., R. 34 W., M.P.M., containing 7.907 acres, more or less, and more particularly described as follows: Beginning at the Northeast Corner of Section 24 Twp. 31 N., R. 34 W., M.P.M.; thence, along the East line of said Section 24, S 0° 00' 44" W. 184.08 feet to a point on the northerly right of way line of the Callahan-Iron Creek Road; thence, along said northerly right of way line, on the arc of a curve to the left having a radius of 370.0 feet, which radius bears S 6° 55' 24" E turning through an angle of 11° 03' 18" a distance of 71.39 feet; thence, S 72° 01' 18" W 105.22 feet; thence, on the arc of a curve to the right having a radius of 2170.0 feet, turning through an angle of 6° 57' 03" a distance of 263.25 feet; thence, S 78° 58' 21" W 80.71 feet; thence, on the arc of a curve to the left having a radius of 2230.0 feet, turning through an angle of 6° 51' 48" a distance of 267.13 feet; thence, S 72° 06' 33" W 95.08 feet; thence, on the arc of a curve to the right having a radius of 410.0 feet, turning through an angle of 30° 56' 07" a distance of 221.37 feet; thence, leaving said northerly right of way line, North 418.44 feet to a point on the North line of said Section 24; thence, along said North line, S 89° 59' 45" E 1071.13 feet to the point of beginning.

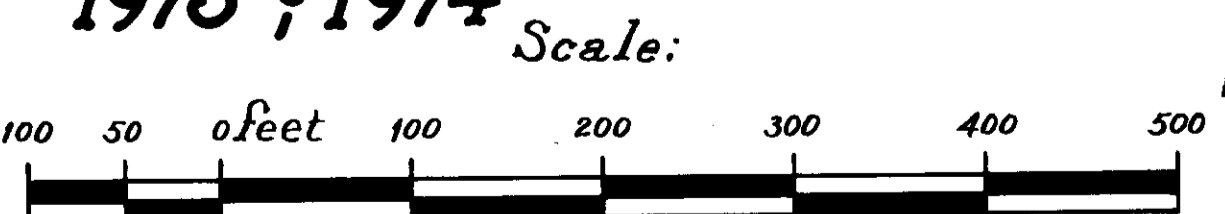


NOTE: All P.I.'s are marked with 18" long 1/2 or 3/4 inch Steel Rods.

**CERTIFICATE** - I, J. W. Ninneman, a duly qualified and licensed Civil Engineer and Land Surveyor of the State of Montana, do hereby certify that the foregoing plat was made from the field notes of an actual survey, made under my supervision during August 1973 and August 1974; that the bearings are based upon the G.L.O. bearing of the Lake Creek Guide Meridian; that the plat was made for conveyance by reference thereto and correctly shows the result of the said survey.

*J. W. Ninneman*  
J. W. Ninneman, Montana License No. 534 E.S.

NW<sup>1</sup>/<sub>4</sub> NE<sup>1</sup>/<sub>4</sub>



Ninneman Engineering ~ Troy, Montana

APPROVED: *Sept. 17, 1974* *Melvin D. Pastern*  
Examining Land Surveyor  
Registration No. 42055

APPROVED: *R. W. Lindsay*  
Chairman Board of Commissioners

ATTESTED: *Eileen S. Vaughn*  
County Clerk and Recorder

Dated this *18* day of *September*, 1974

STATE OF MONTANA COUNTY OF LINCOLN

Filed on this *18th* day of *September*, 1974  
at *2:05* o'clock *P.* M.

*Charles L. Taylor*  
County Clerk and Recorder

by *Max Watson*  
Deputy

**Certificate of Survey No. 77**