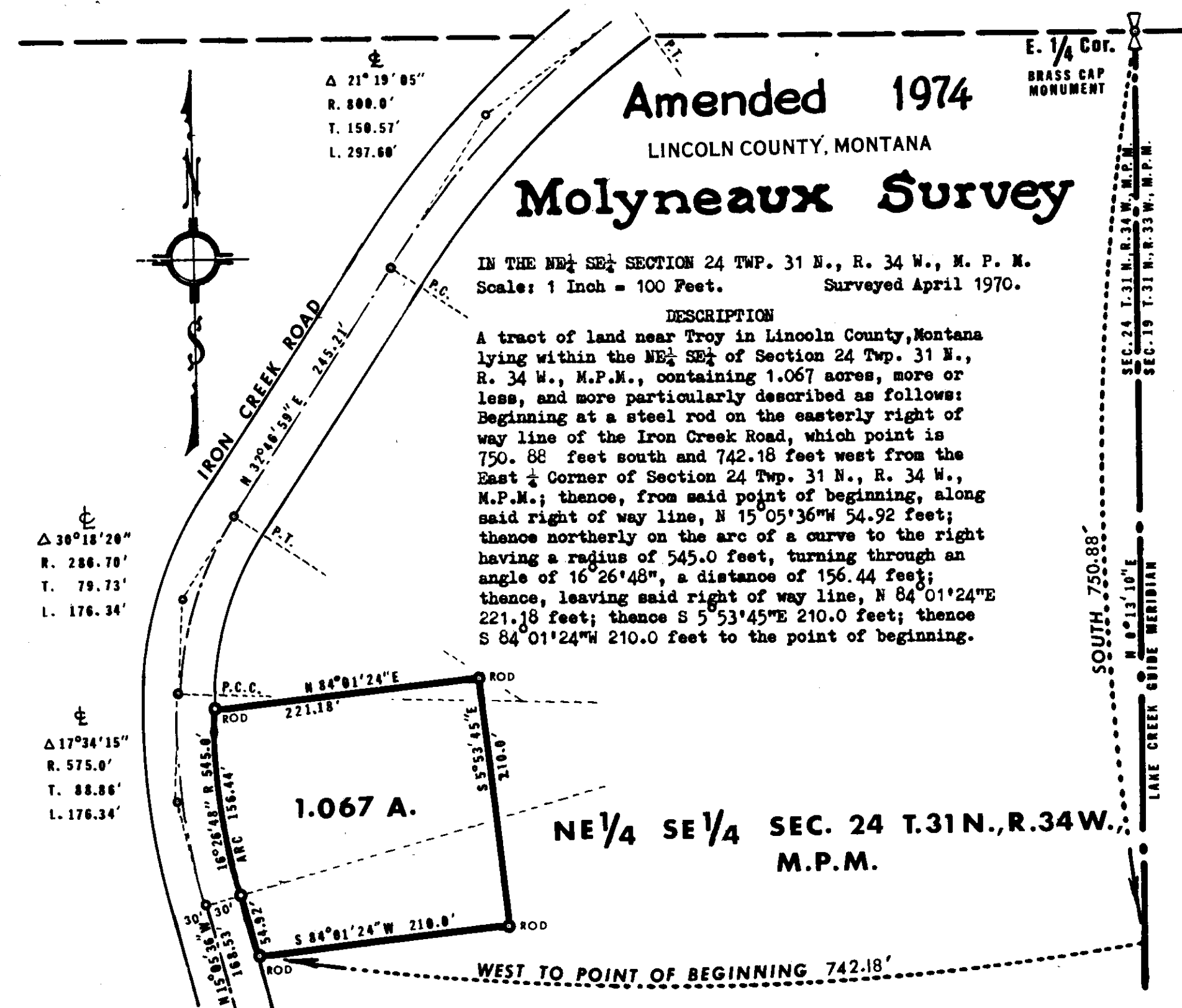


# MOLYNEAUX ~ THATCHER

from Molyneaux Survey of April, 1970



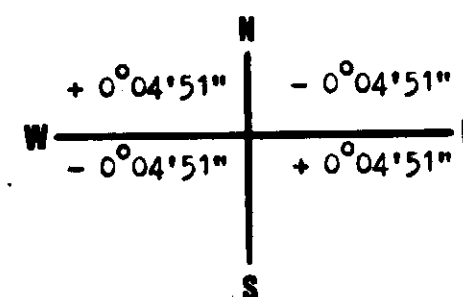
APPROVED August 10, 1974 *Mohin D. Butler*  
Examining Land Surveyor  
Registration No. 42055

APPROVED *R.W. Lindsay*  
Chairman Board of Commissioners

ATTESTED \_\_\_\_\_  
County Clerk and Recorder  
Dated this \_\_\_\_\_ day of \_\_\_\_\_ 19\_\_

STATE OF MONTANA COUNTY OF LINCOLN  
Filed on this 21st day of August, 1974  
at 2:55 o'clock P. M.  
*Sharon L. Vaughn*  
County Clerk and Recorder  
by *Betty Stonebraker*  
Deputy

Bearing equation applied  
to original survey bearings.



Note: ROD indicates 18" long  
half-inch capped  
Steel Bar

## ENGINEER'S CERTIFICATE

I, J. W. Minneman, a duly qualified and licensed Civil Engineer and Land Surveyor of the State of Montana, do hereby certify that the foregoing plat was made from the field notes of an actual survey made in April 1970 under my supervision; that the said plat was amended in August 1974 to conform with comprehensive County Road surveys of 1973; that the bearings are based upon the retracement bearing of the Lake Creek Guide Meridian, resulting in an equation in bearings from the original survey as shown by the adjacent diagram; and that the said plat was made for conveyance by reference thereto.

*J.W. Minneman*  
J. W. Minneman  
Montana License No. 534 E.S.

Scale: ~



Certificate of Survey No. 70