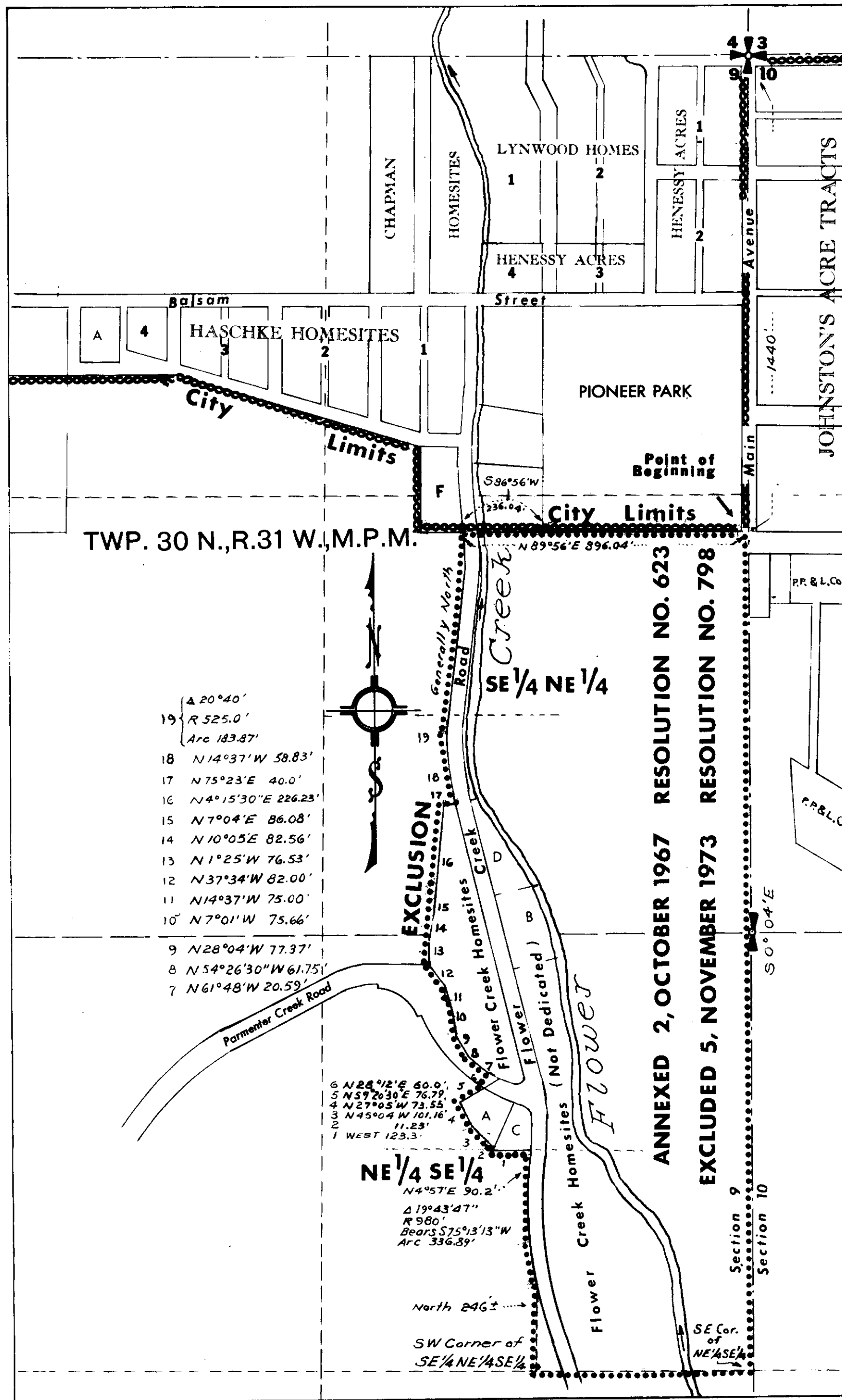


#7

November 21st 1913  
5:00  
Eleanor L. Doughty  
Mrs. Watson

Dec 28 1913  
R. W. Dickey



# DESCRIPTION OF EXCLUSION BY RESOLUTION NO. 798 - NOVEMBER 5, 1973

Beginning at a point on the line between Sections 9 and 10 of Twp. 30 N., R. 31 W., M.P.M. at a distance of 1440 feet south of the northeast corner of said Section 9, and which point is 20 feet east of the southeast corner of Pioneer Park of the City of Libby, Montana, thence, from said point of beginning S 0°04' E along the east line of said Section 9 to the southeast corner of the NE 1/4 SE 1/4 of said Section 9; thence, along the south line of the NE 1/4 SE 1/4 of said Section 9 to the southwest corner of the SE 1/4 NE 1/4 SE 1/4 of said Section 9; thence north along the west line of said SE 1/4 NE 1/4 SE 1/4, 246 feet, more or less, to a point on the westerly right of way line of Flower Creek Road; thence, along said westerly right of way line on the arc of a curve to the right having a radius of 980.0 feet, which radius bears S 75°13'13" W, turning through an angle of 19°43'47", a distance of 336.89 feet; thence, continuing along said right of way line, N 4°57' E 90.02 feet to a point on the south line of the NW 1/4 NE 1/4 SE 1/4 of said Section 9 at a distance of 19.79 feet west of the southeast corner thereof; thence, west along the south line of the NW 1/4 NE 1/4 SE 1/4 said Section 9 a distance of 123.3 feet to the southwest corner of Hall-Nelson Lot "C"; thence along the westerly line of said Lot "C" 11.23 feet to the southeast corner of Hall-Nelson Lot "A"; thence, along the westerly line of said Lot "A" the following three courses: N 45°04' W 101.16 feet; N 27°05' W 73.55 feet, N 59°20'30" E 76.79 feet to a point on the southwesterly right of way line of Parmenter Creek Road; thence, crossing Parmenter Creek Road, N 28°12' E 60.0 feet to a point on the southwesterly line of Lot 24 of Flower Creek Homesites; thence, along the westerly boundary of Flower Creek Homesites the following ten courses: N 61°48' W 20.59 feet; thence N 54°26'30" W 61.75 feet; thence N 28°04' W 77.37 feet; thence N 7°01' W 75.66 feet; thence N 14°37' W 75.00 feet; thence N 37°34' W 82.00 feet; thence N 1°25' W 76.53 feet; thence N 10°05' E 82.56 feet; thence N 7°04' E 86.08 feet; thence N 4°15'30" E 226.23 feet to the northwest corner of Lot 16 of Flower Creek Homesites; thence, along the north line of said Lot 16, N 75°23' E 40.0 feet to a point on the westerly line of Flower Creek Road; thence along said westerly line, N 14°37' W 58.83 feet; thence, on the arc of a curve to the right having a radius of 525.0 feet, turning through an angle of 20°40', a distance of 183.87 feet; thence N 6°03' E 33.29 feet to a point on the north line of the SW 1/4 SE 1/4 NE 1/4 of said Section 9; thence generally north along the westerly right of way line of Flower Creek Road to the southeast corner of Block "F" as shown on Plat No. 840 Lincoln County Records, which point is S 89°56' W 236.04 feet from the southwest corner of Pioneer Park; thence N 89°56' E to said southwest corner and continuing along the south line of Pioneer Park and said south line extended east 20.0 feet, a distance of 896.04 feet to the point of beginning. Containing 49.141 acres, more or less.

## ENGINEER'S CERTIFICATE

This is to certify that the foregoing plat, and description, are based upon City of Libby, and Lincoln County records, and correctly portray the related basic data.

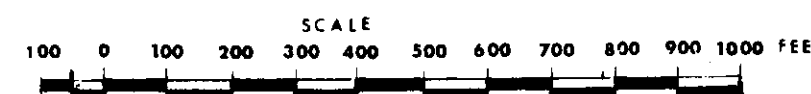
*Jack W. Ninneman*  
Jack W. Ninneman  
Montana License No. 534 E.S.

LINCOLN COUNTY, MONTANA

# LIBBY

## EXCLUSION

### 1973



NINNEMAN ENGINEERING, TROY, MONTANA

