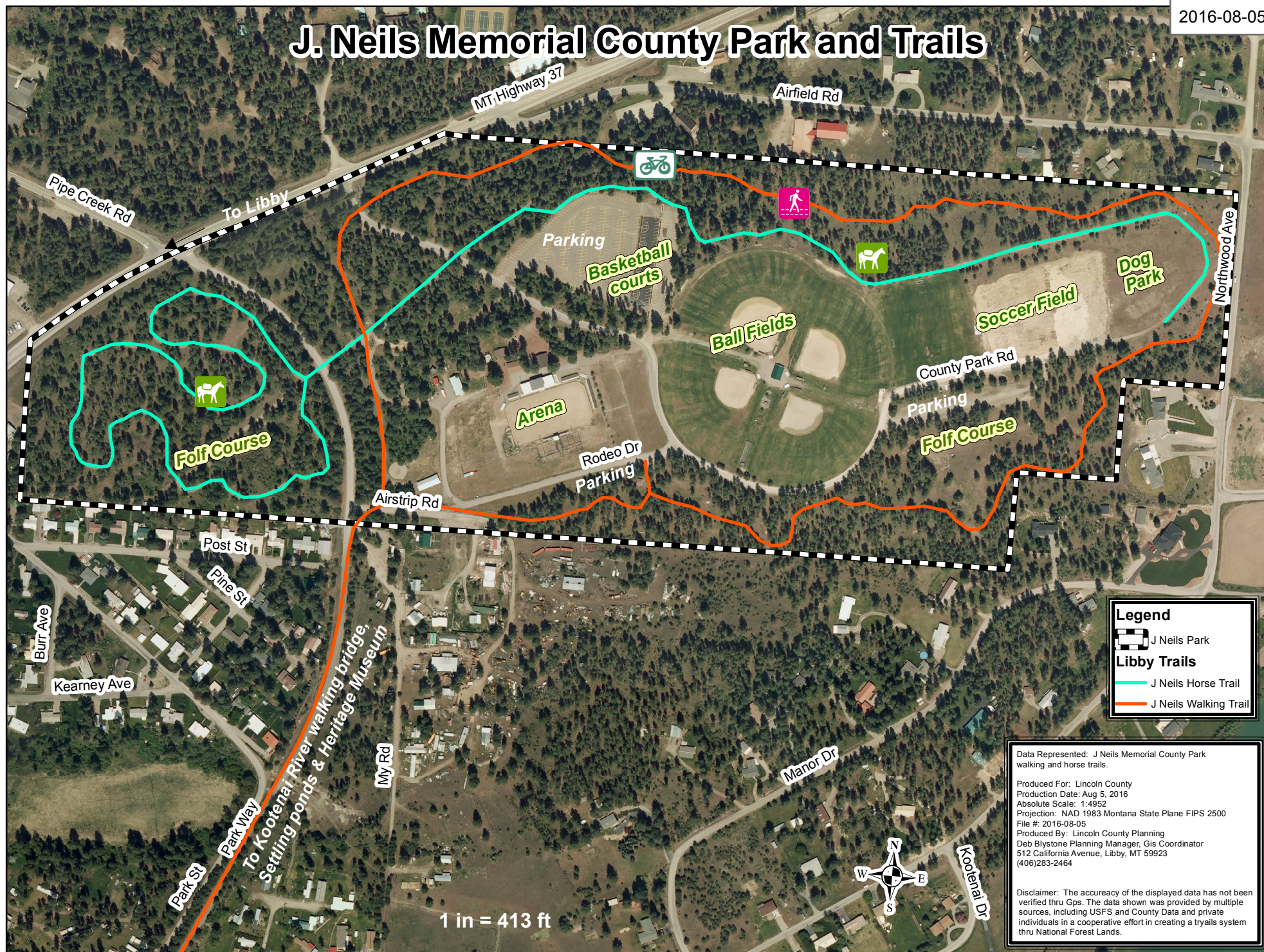


# J. Neils Memorial County Park and Trails



Data Represented: J Neils Memorial County Park walking and horse trails.

Produced For: Lincoln County  
 Production Date: Aug 5, 2016  
 Absolute Scale: 1:4952  
 Projection: NAD 1983 Montana State Plane FIPS 2500  
 File #: 2016-08-05

Produced By: Lincoln County Planning  
 Deb Blystone Planning Manager, GIS Coordinator  
 512 California Avenue, Libby, MT 59923  
 (406)283-2464

Disclaimer: The accuracy of the displayed data has not been verified thru Gps. The data shown was provided by multiple sources, including USFS and County Data and private individuals in a cooperative effort in creating a trails system thru National Forest Lands.