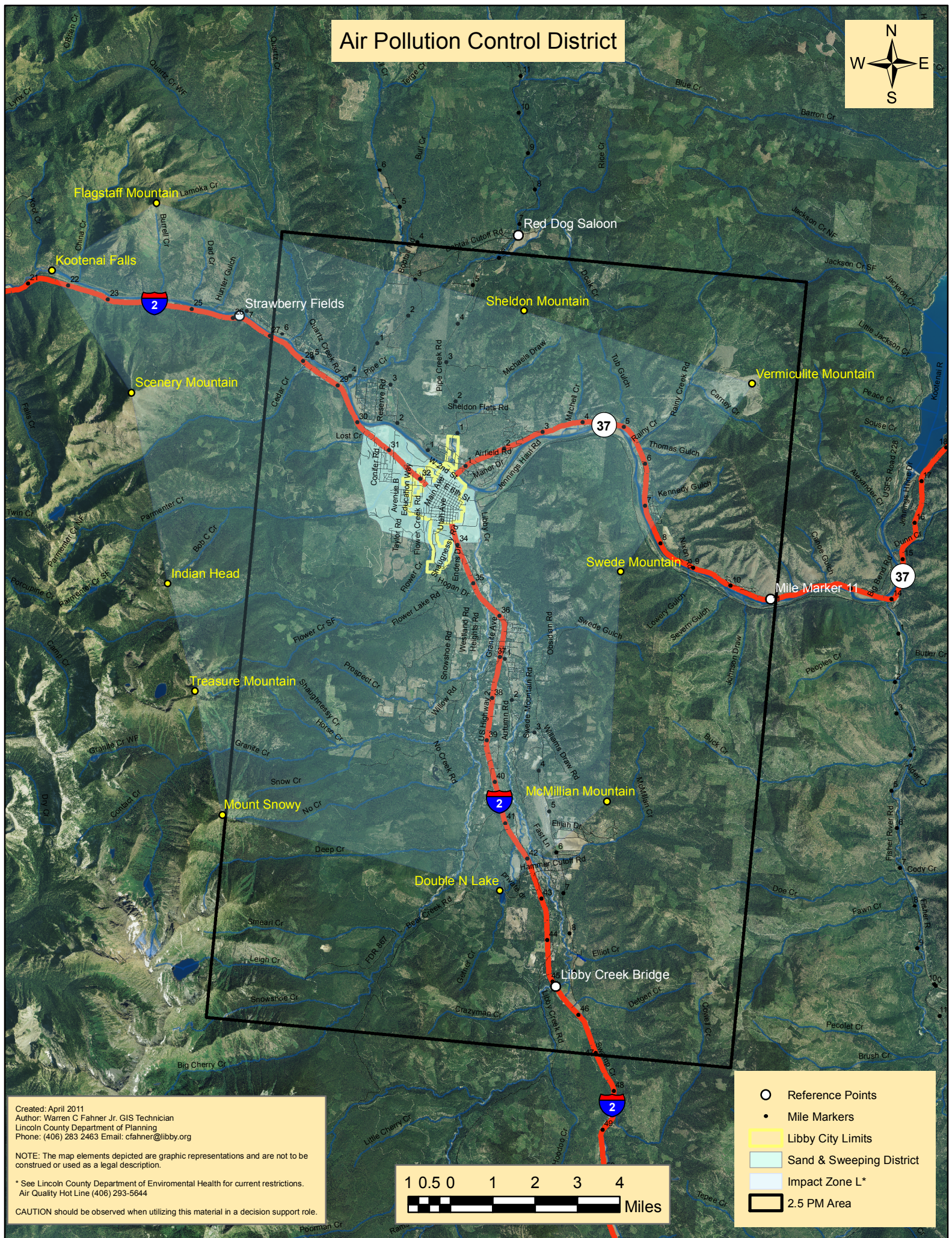


Air Pollution Control District

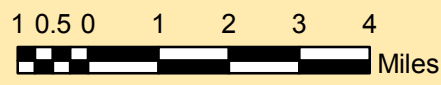


Created: April 2011
 Author: Warren C Fahner Jr. GIS Technician
 Lincoln County Department of Planning
 Phone: (406) 283 2463 Email: cfahner@libby.org

NOTE: The map elements depicted are graphic representations and are not to be construed or used as a legal description.

* See Lincoln County Department of Environmental Health for current restrictions.
 Air Quality Hot Line (406) 293-5644

CAUTION should be observed when utilizing this material in a decision support role.



- Reference Points
- Mile Markers
- ▭ Libby City Limits
- ▭ Sand & Sweeping District
- ▭ Impact Zone L*
- ▭ 2.5 PM Area